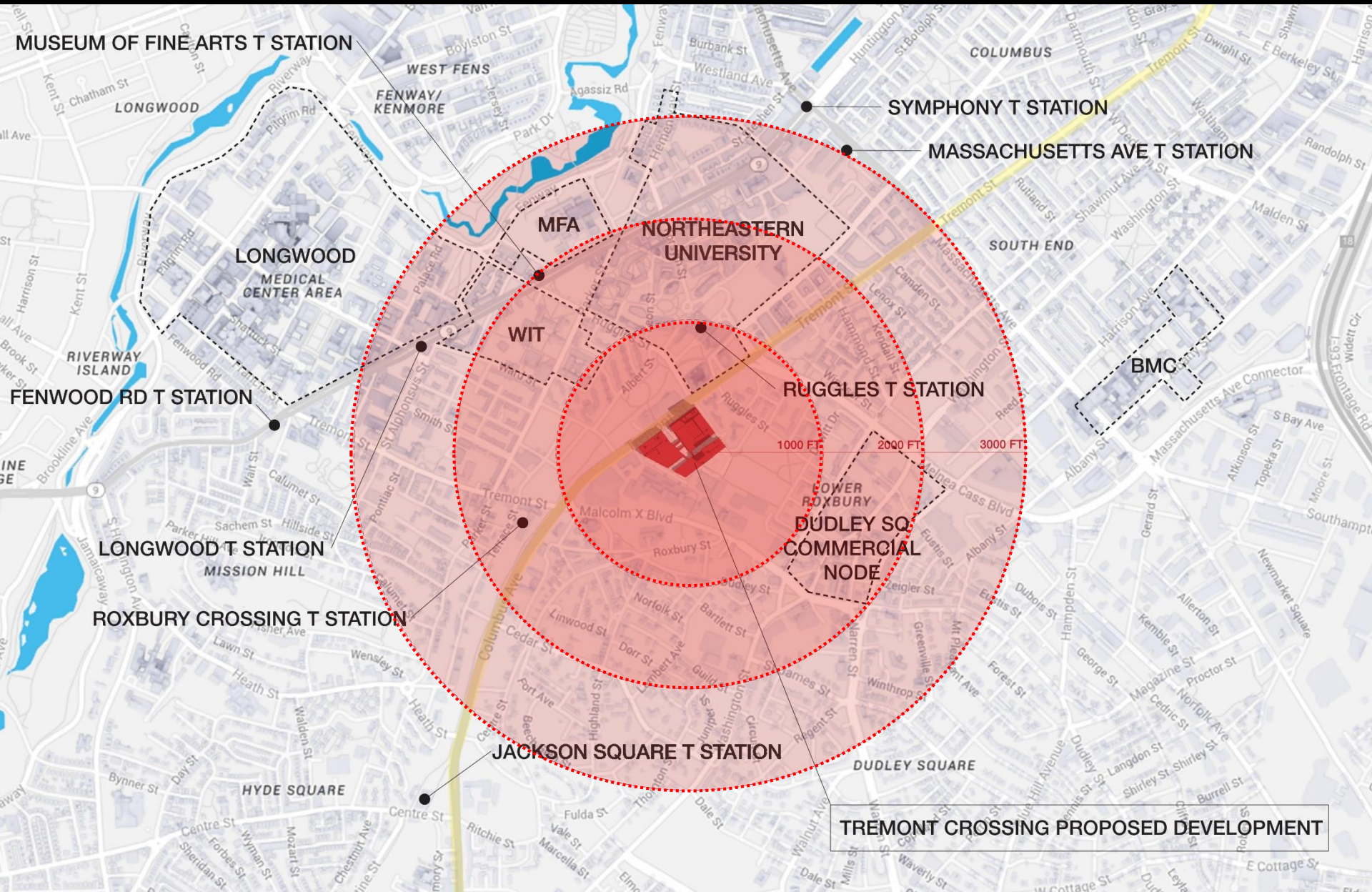


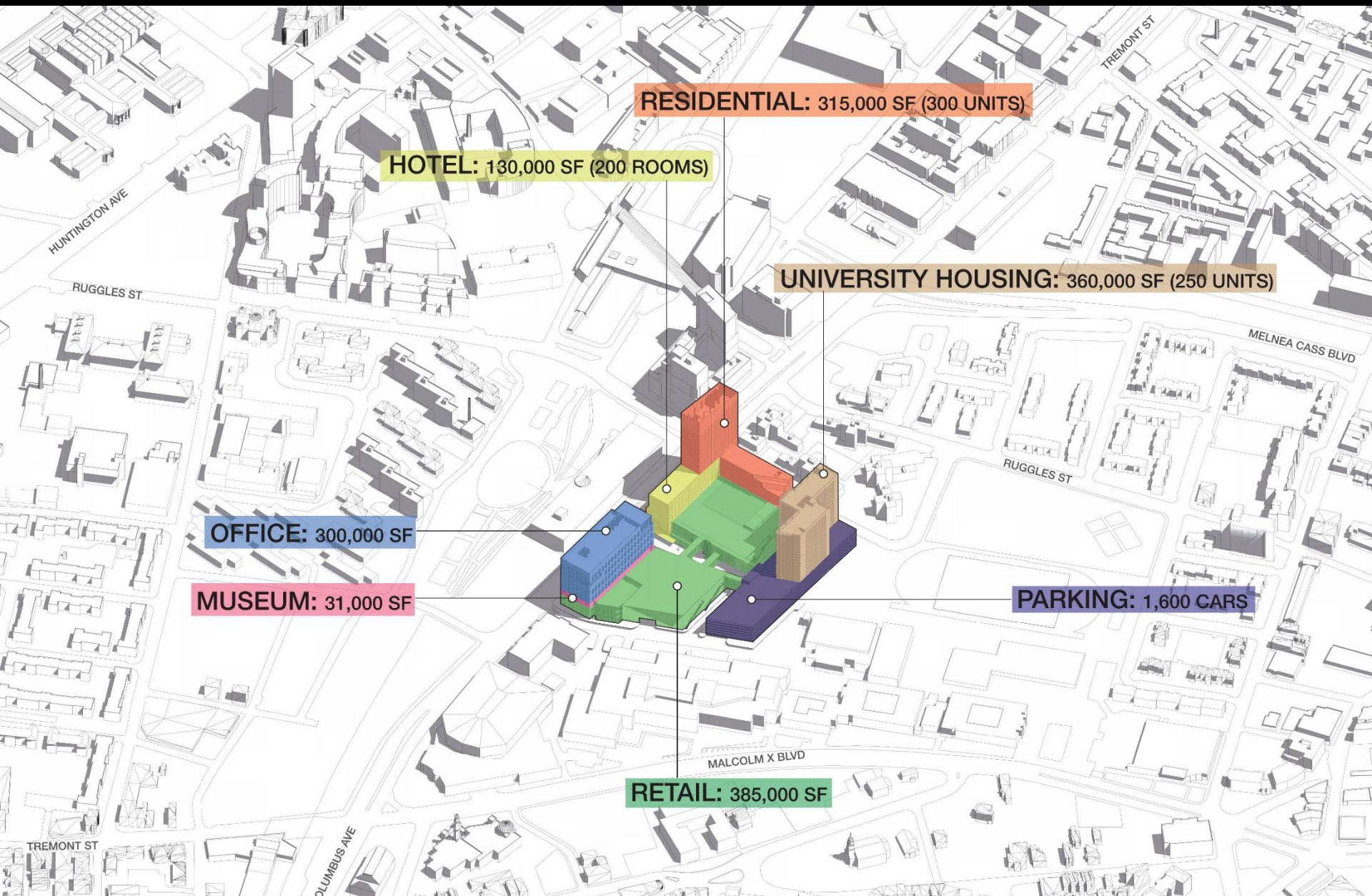
TREMONT CROSSING, ROXBURY





TREMONT CROSSING PROPOSED DEVELOPMENT





MASSING PROGRAM

RESIDENTIAL: 315,000_{GSF}

HOTEL: 130,000_{GSF}

STUDENT HOUSING: 360,000_{GSF}

PARKING GARAGE: 580,000_{GSF}

RETAIL 385,000_{GSF}

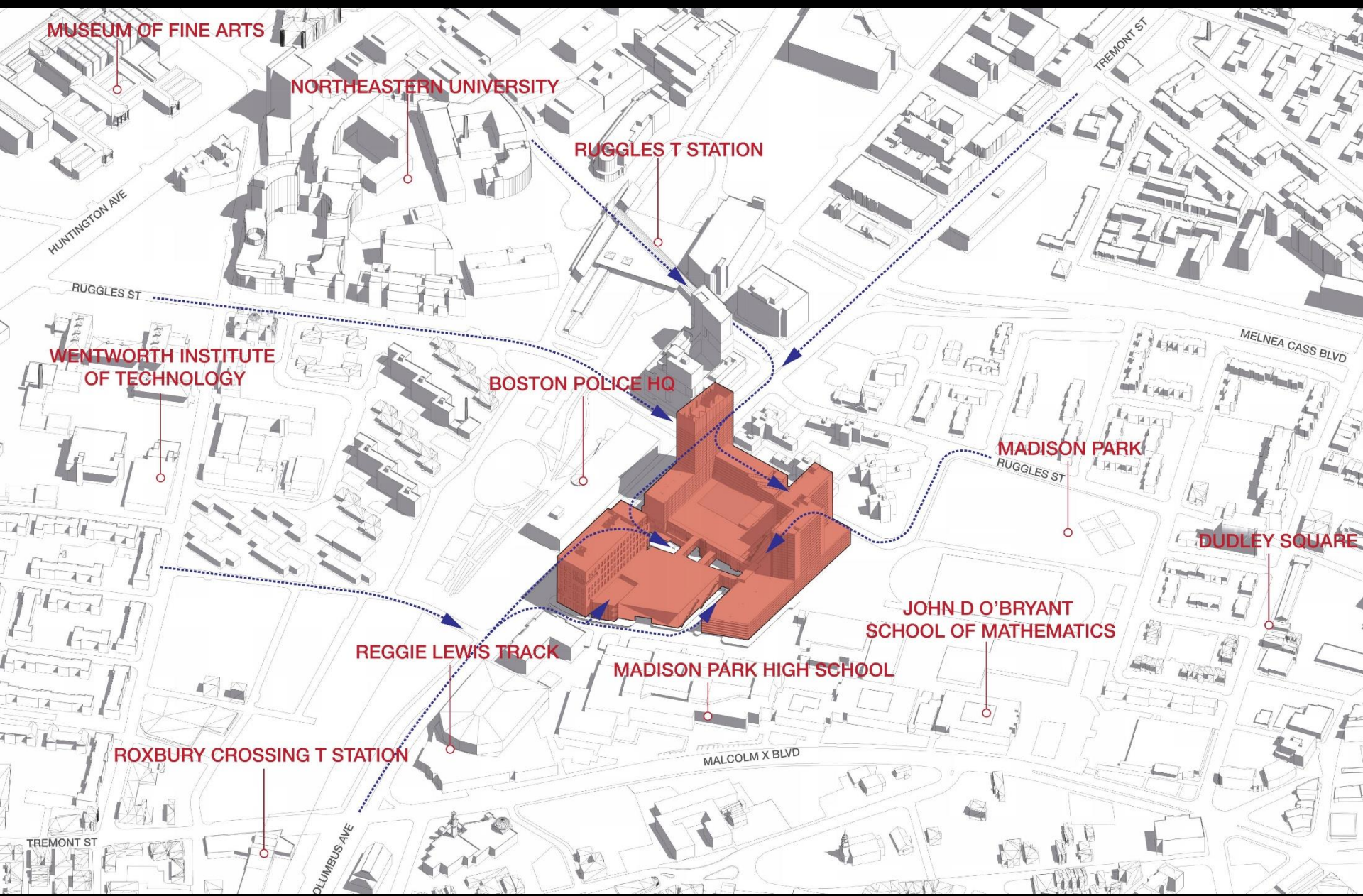
OFFICE: 300,000_{GFS}

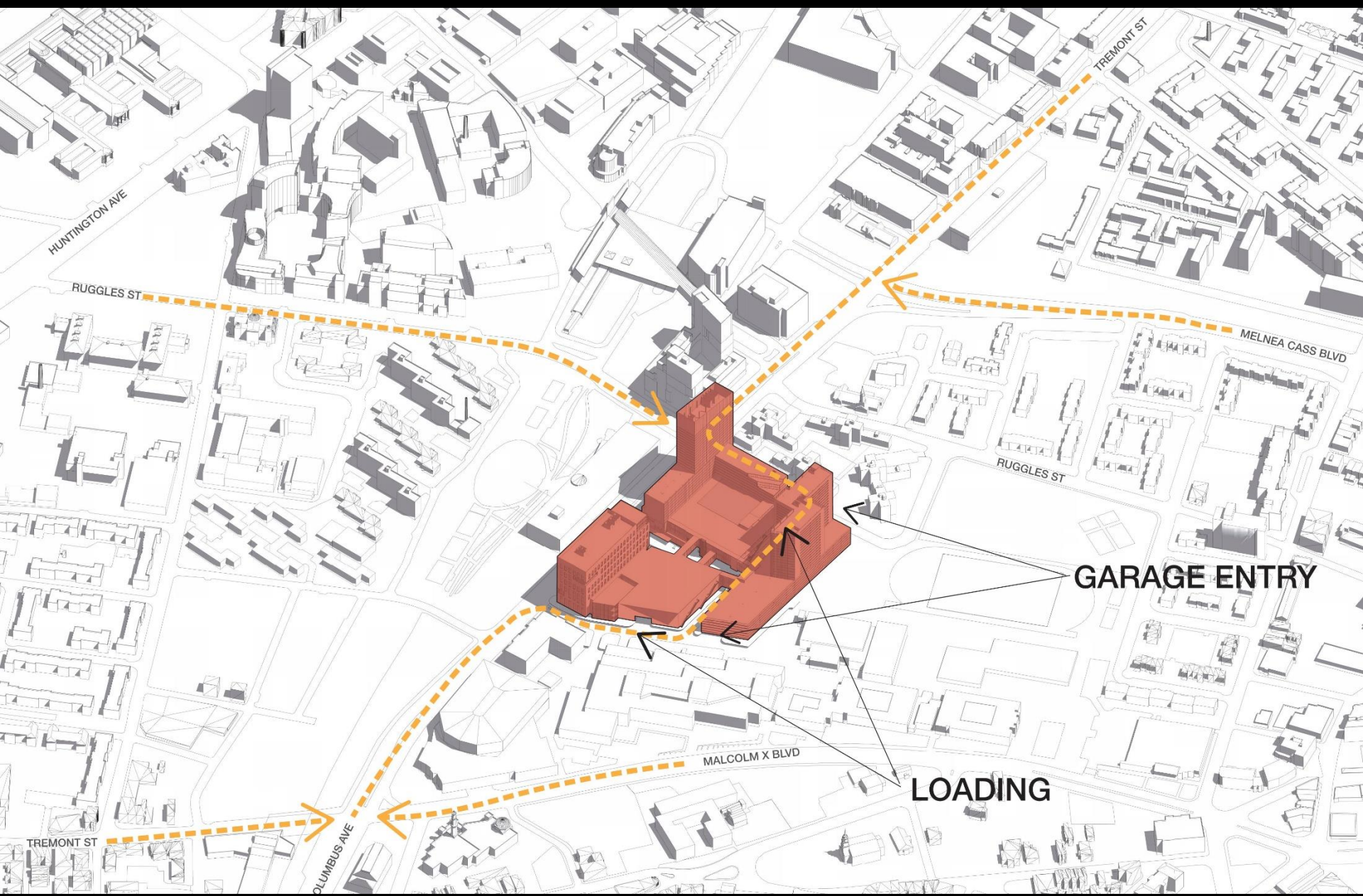
MUSEUM + ART STUDIO: 30,000_{GSF}

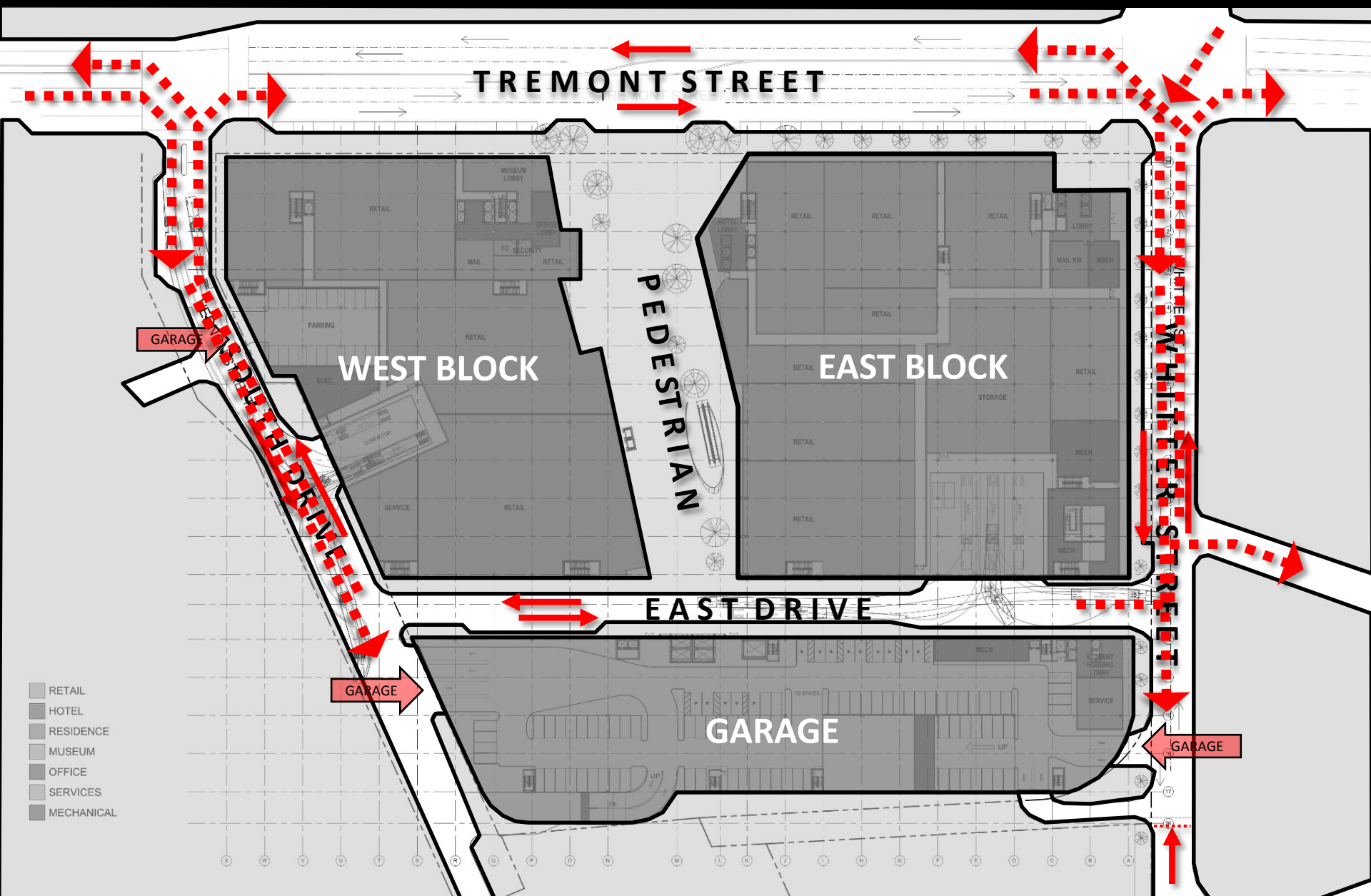
TOTAL 1,922,700_{GSF}

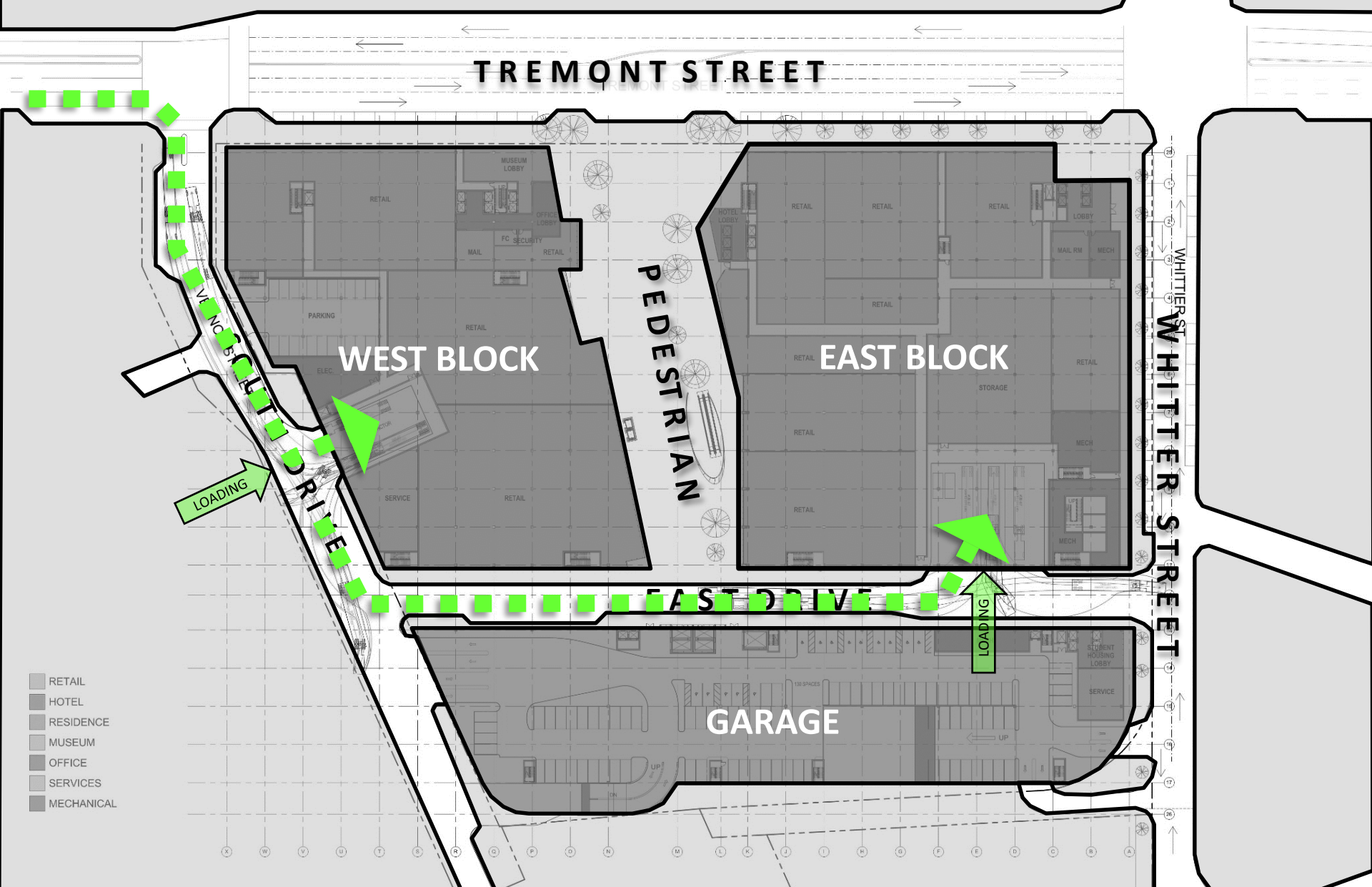
PARKING FOR 1,600 CARS

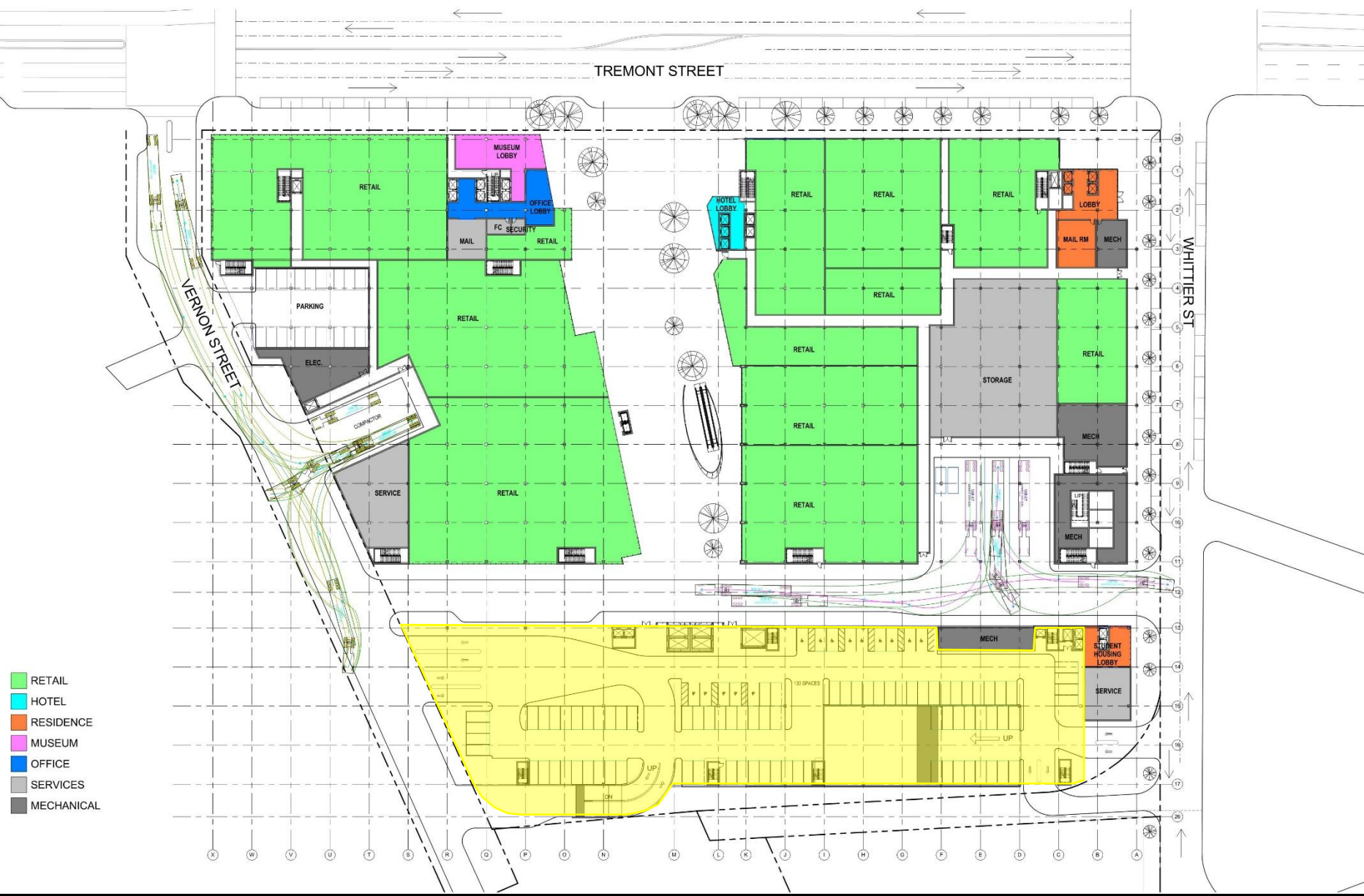


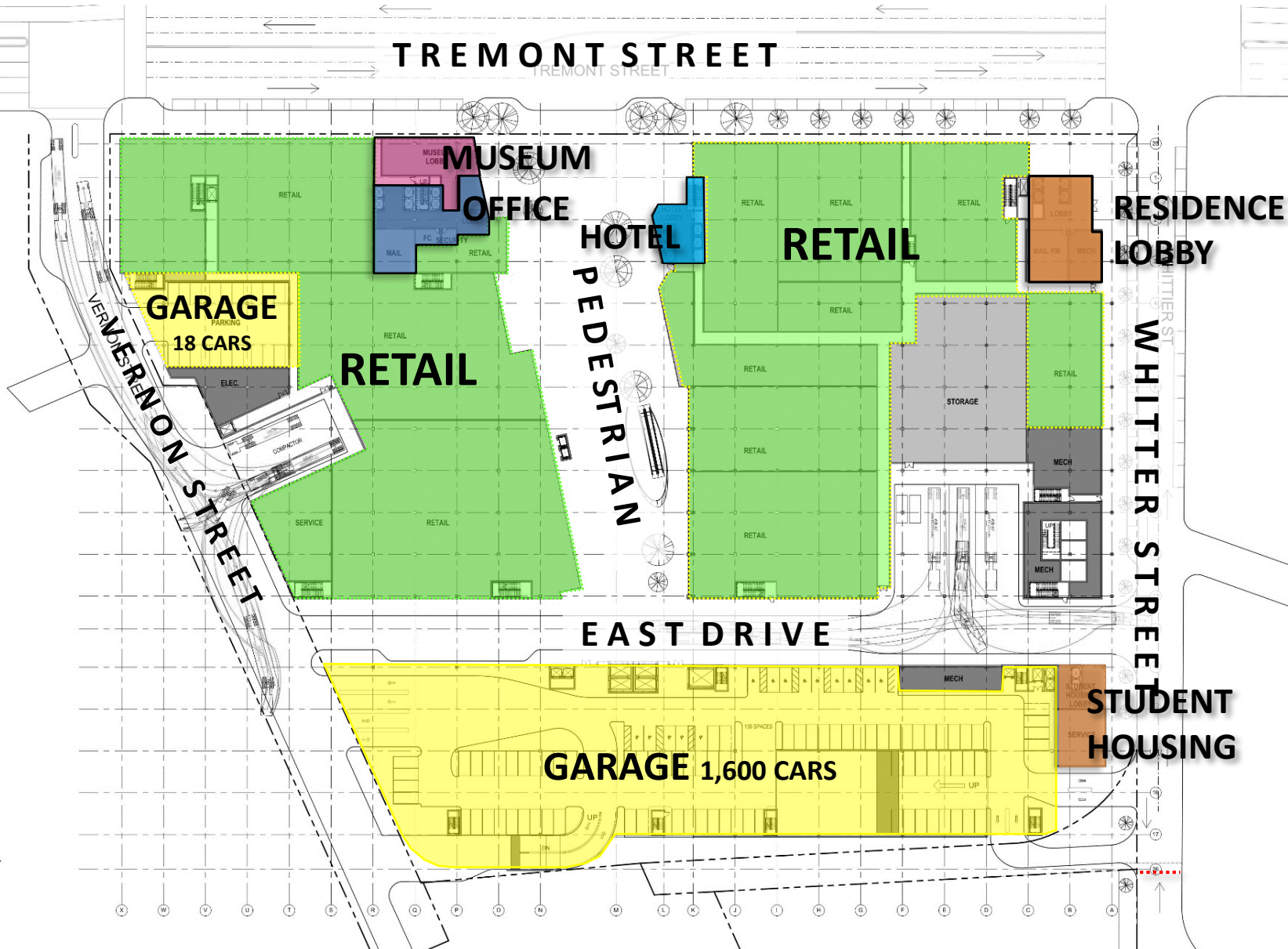




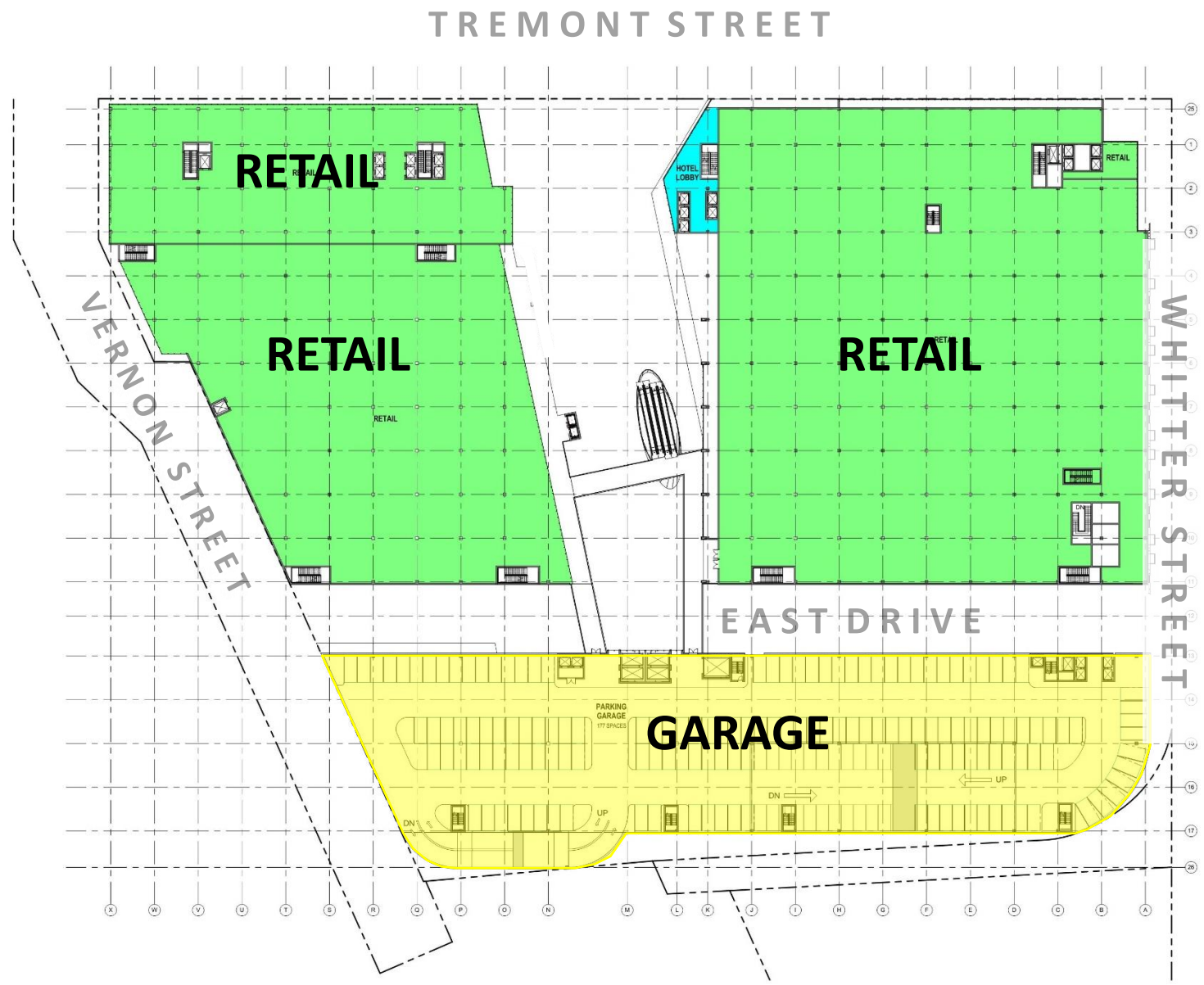




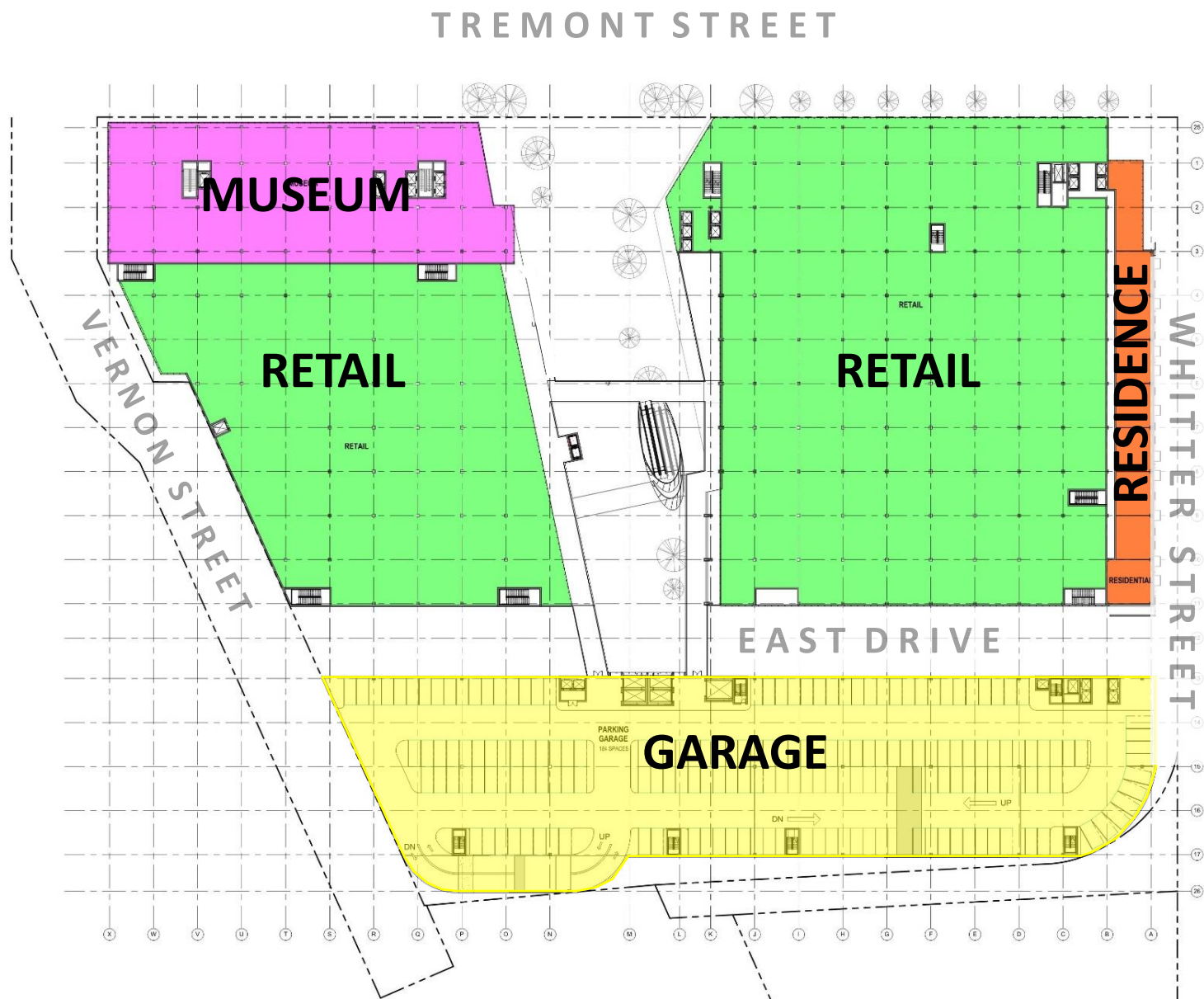


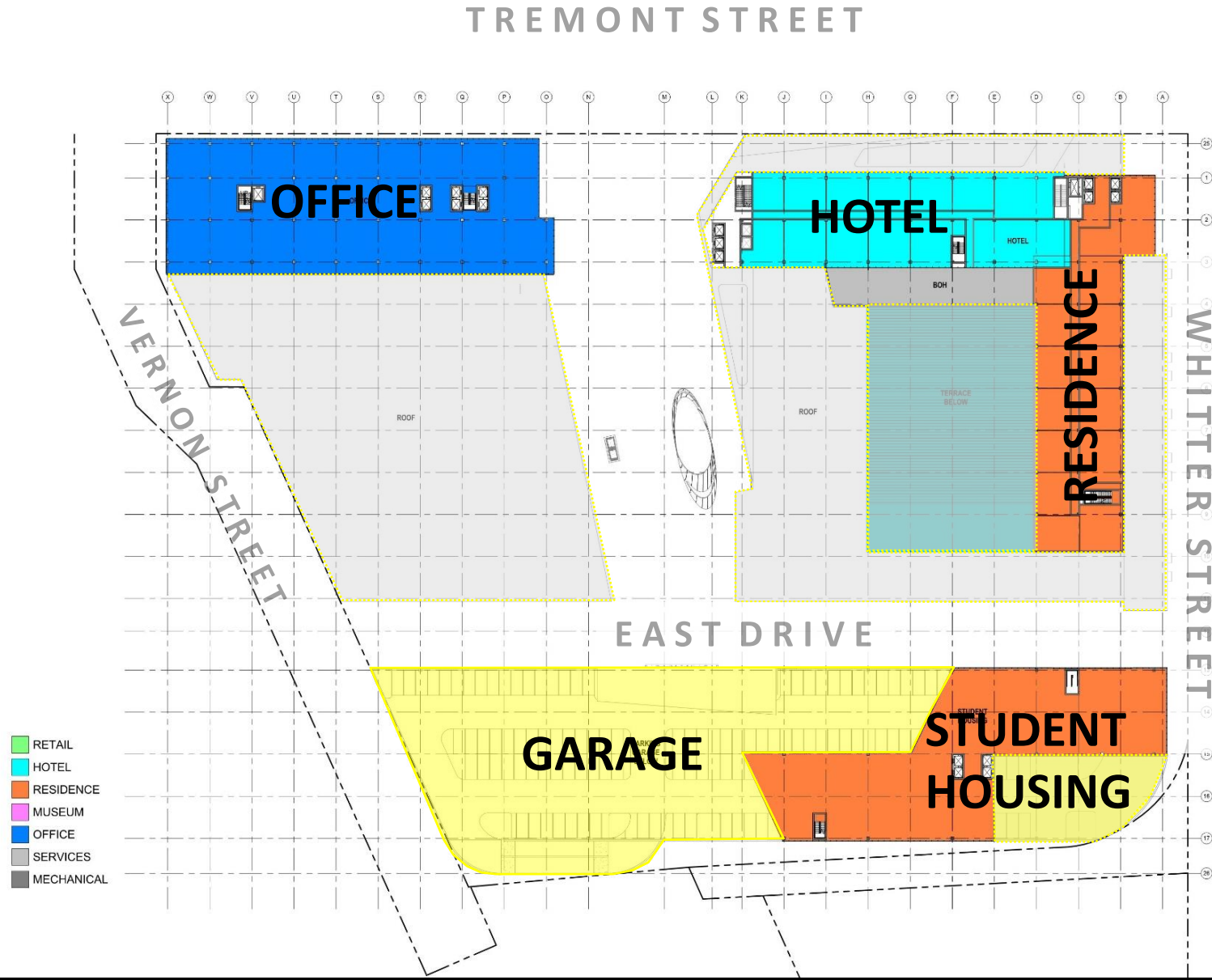


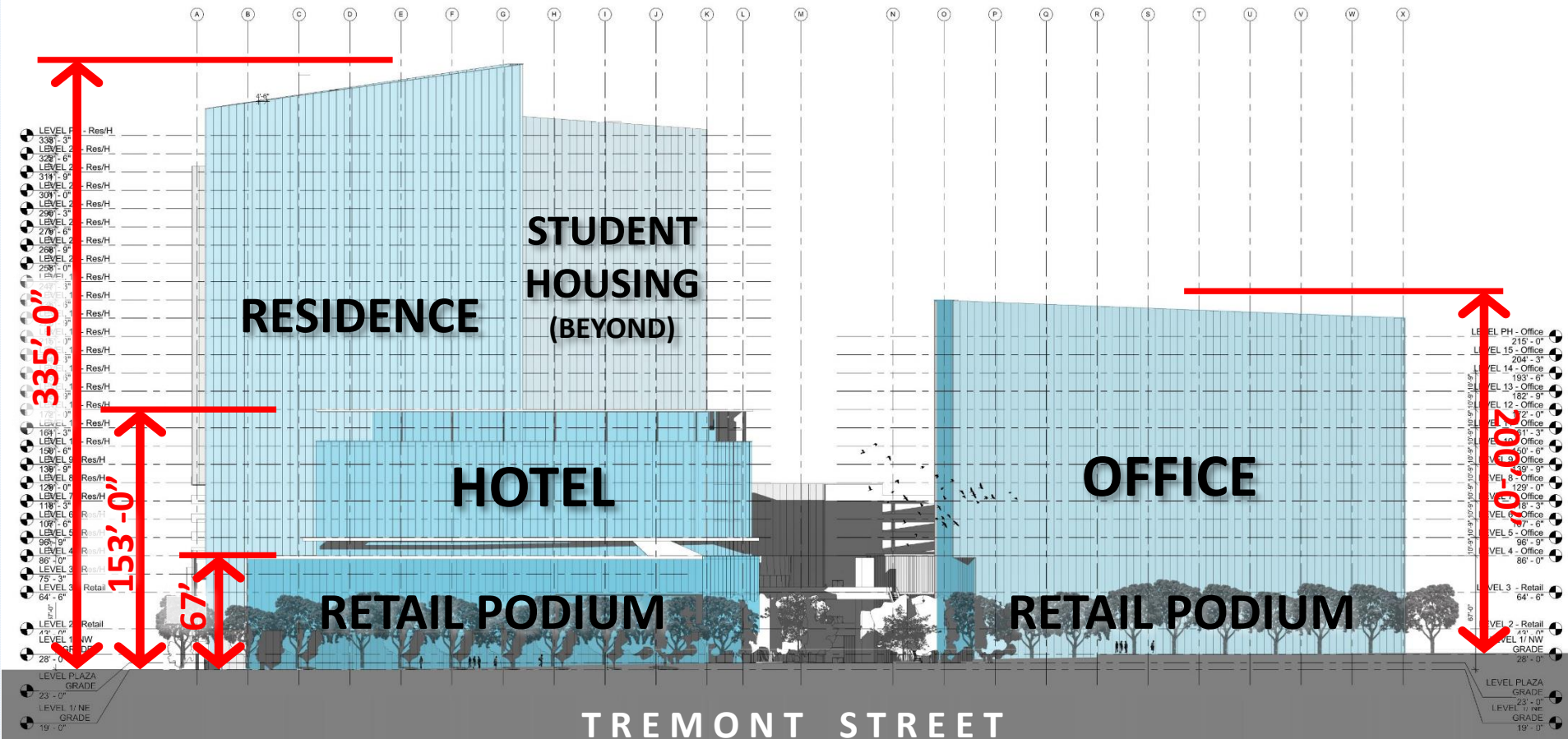
- RETAIL
- HOTEL
- RESIDENCE
- MUSEUM
- OFFICE
- SERVICES
- MECHANICAL



- RETAIL
- HOTEL
- RESIDENCE
- MUSEUM
- OFFICE
- SERVICES
- MECHANICAL

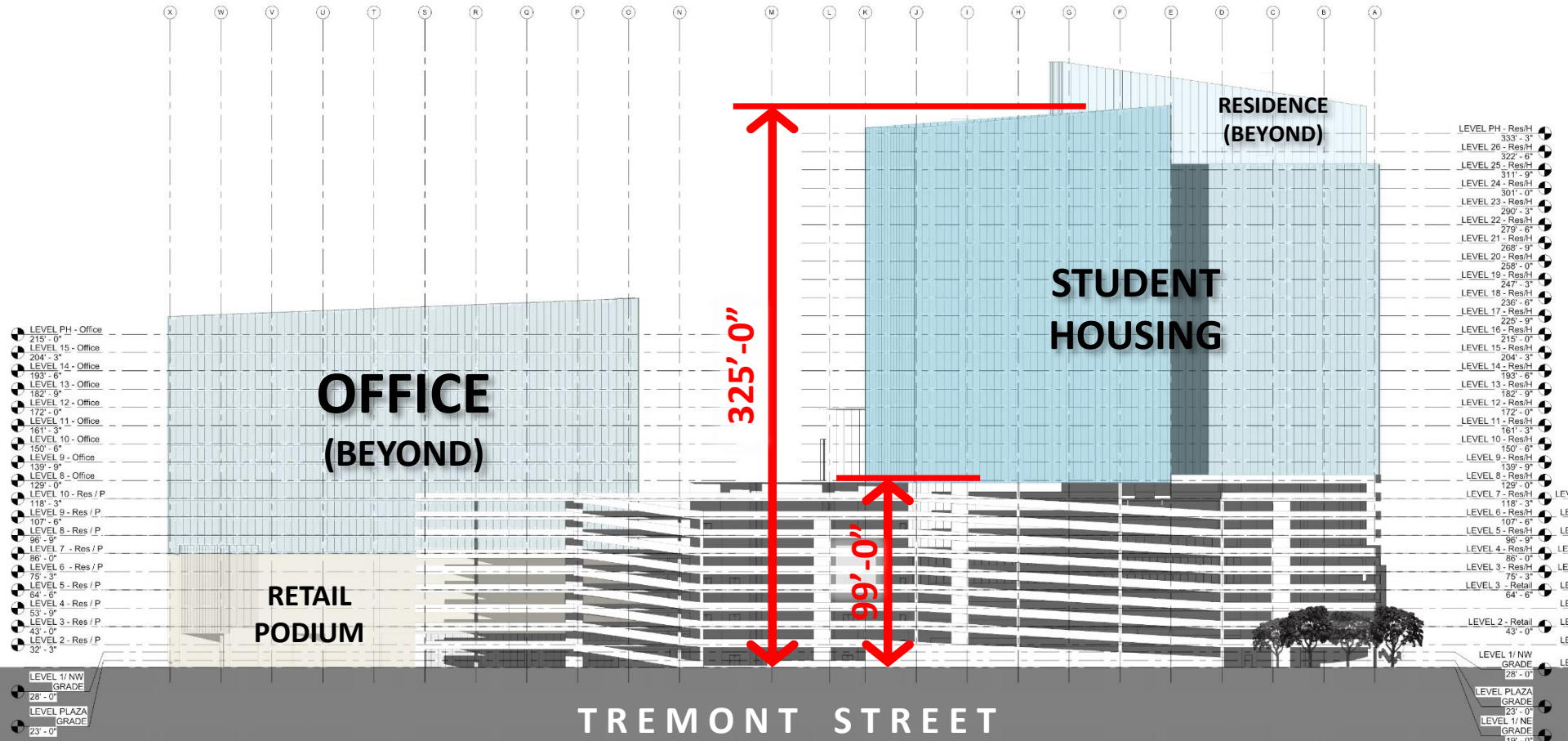






TREMONT ST. - ELEVATION

Tremont Crossing Boston



- LEVEL PH - Office 215'-0"
- LEVEL 15 - Office 204'-3"
- LEVEL 14 - Office 193'-6"
- LEVEL 13 - Office 182'-9"
- LEVEL 12 - Office 172'-0"
- LEVEL 11 - Office 161'-3"
- LEVEL 10 - Office 150'-6"
- LEVEL 9 - Office 139'-9"
- LEVEL 8 - Office 129'-0"
- LEVEL 10 - Res / P 118'-3"
- LEVEL 9 - Res / P 107'-6"
- LEVEL 8 - Res / P 96'-9"
- LEVEL 7 - Res / P 86'-0"
- LEVEL 6 - Res / P 75'-3"
- LEVEL 5 - Res / P 64'-6"
- LEVEL 4 - Res / P 53'-9"
- LEVEL 3 - Res / P 43'-0"
- LEVEL 2 - Res / P 32'-3"

- LEVEL PH - Res/H 333'-3"
- LEVEL 26 - Res/H 322'-6"
- LEVEL 25 - Res/H 311'-9"
- LEVEL 24 - Res/H 301'-0"
- LEVEL 23 - Res/H 290'-3"
- LEVEL 22 - Res/H 279'-6"
- LEVEL 21 - Res/H 268'-9"
- LEVEL 20 - Res/H 258'-0"
- LEVEL 19 - Res/H 247'-3"
- LEVEL 18 - Res/H 236'-6"
- LEVEL 17 - Res/H 225'-9"
- LEVEL 16 - Res/H 215'-0"
- LEVEL 15 - Res/H 204'-3"
- LEVEL 14 - Res/H 193'-6"
- LEVEL 13 - Res/H 182'-9"
- LEVEL 12 - Res/H 172'-0"
- LEVEL 11 - Res/H 161'-3"
- LEVEL 10 - Res/H 150'-6"
- LEVEL 9 - Res/H 139'-9"
- LEVEL 8 - Res/H 129'-0"
- LEVEL 7 - Res/H 118'-3"
- LEVEL 6 - Res/H 107'-6"
- LEVEL 5 - Res/H 96'-9"
- LEVEL 4 - Res/H 86'-0"
- LEVEL 3 - Res/H 75'-3"
- LEVEL 3 - Retail 64'-6"
- LEVEL 2 - Retail 43'-0"
- LEVEL 1 NW GRADE 28'-0"
- LEVEL PLAZA GRADE 23'-0"
- LEVEL 1 NE GRADE 19'-0"

TREMONT STREET



VIEW FROM TREMONT ST. looking west



VIEW FROM TREMONT ST. looking west

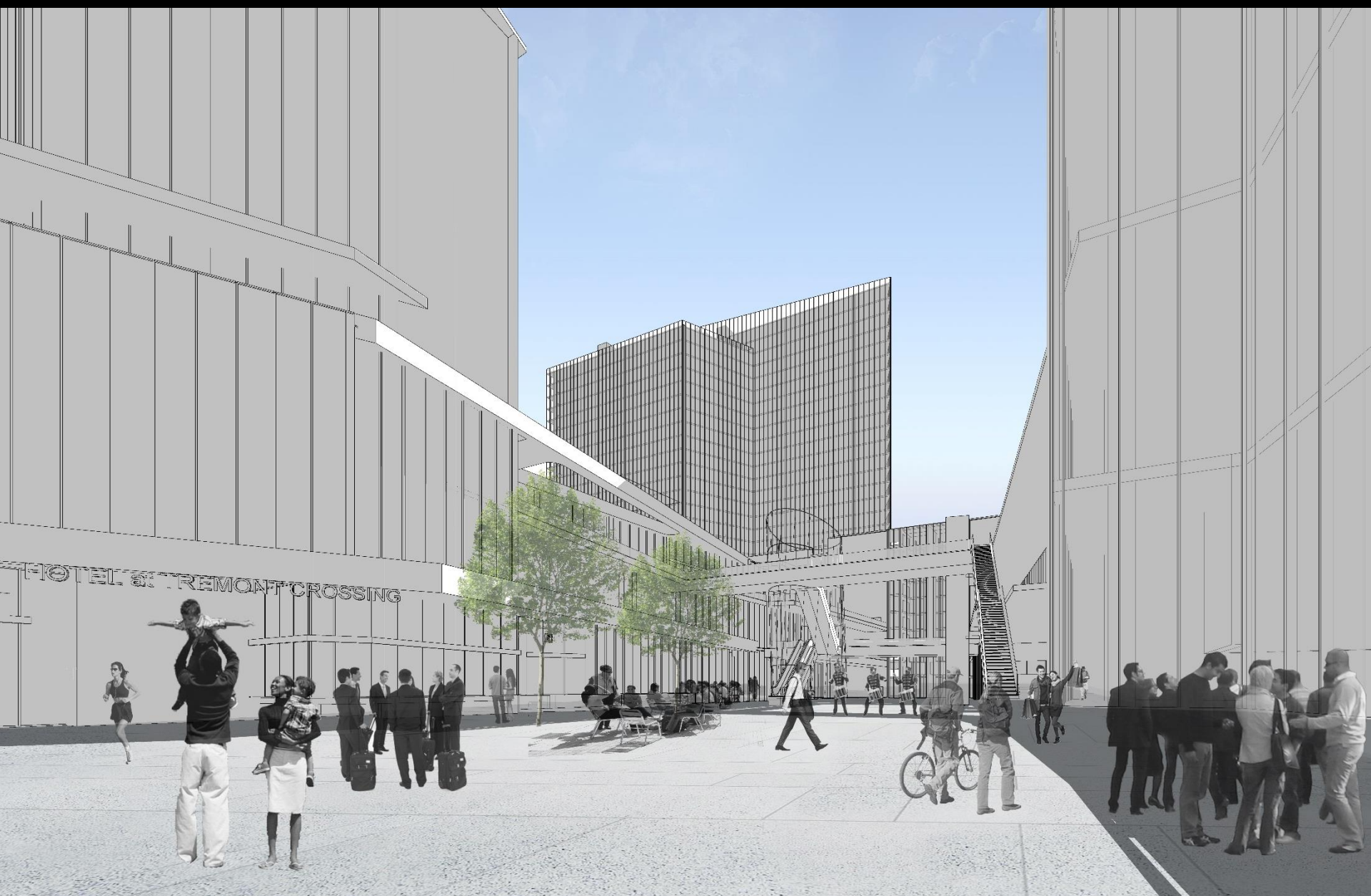


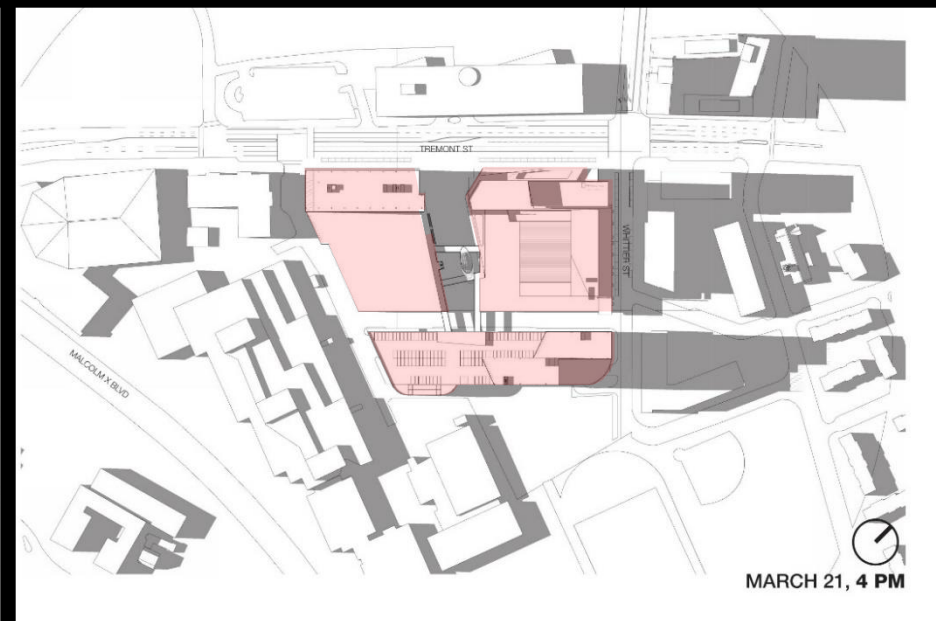
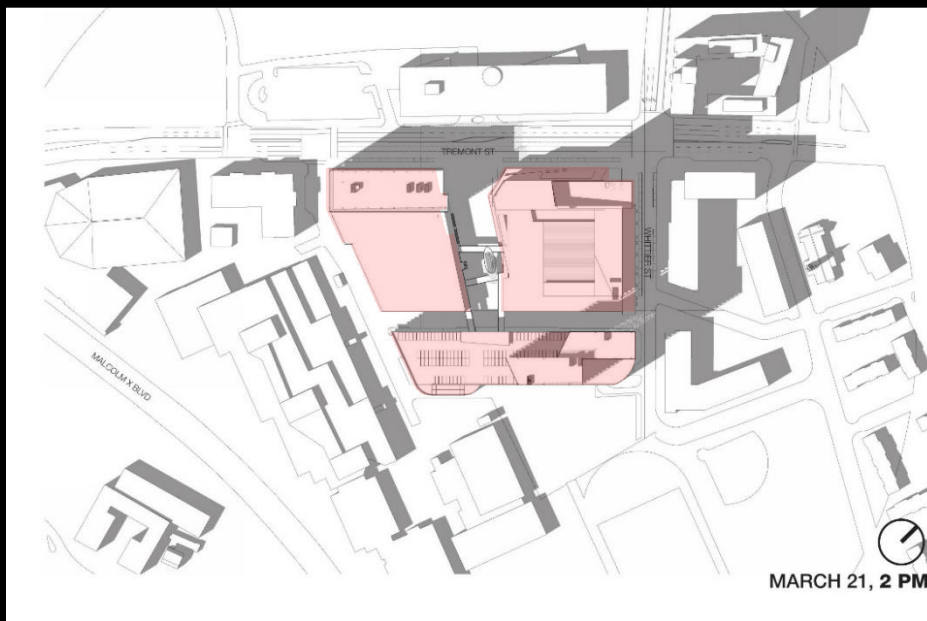
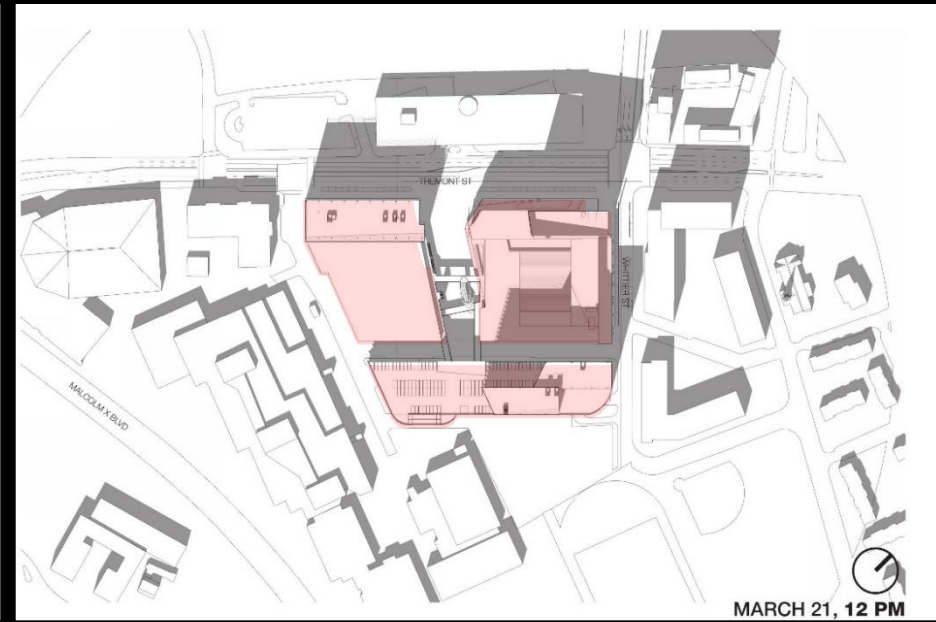
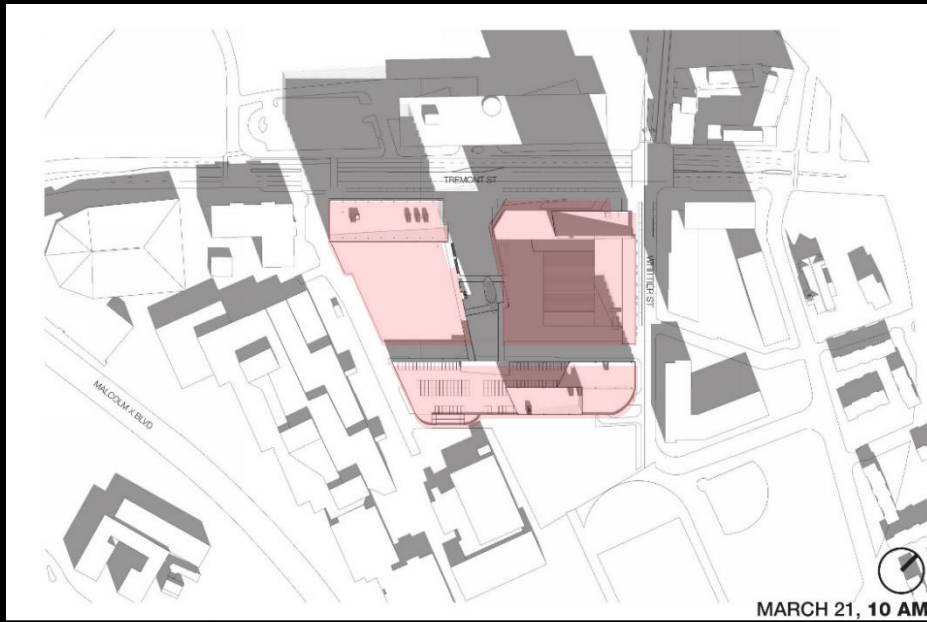
VIEW FROM TREMONT ST. – looking east

42°19'59.69" N 71°05'26.87" W elev 160.ft eye alt 29.ft



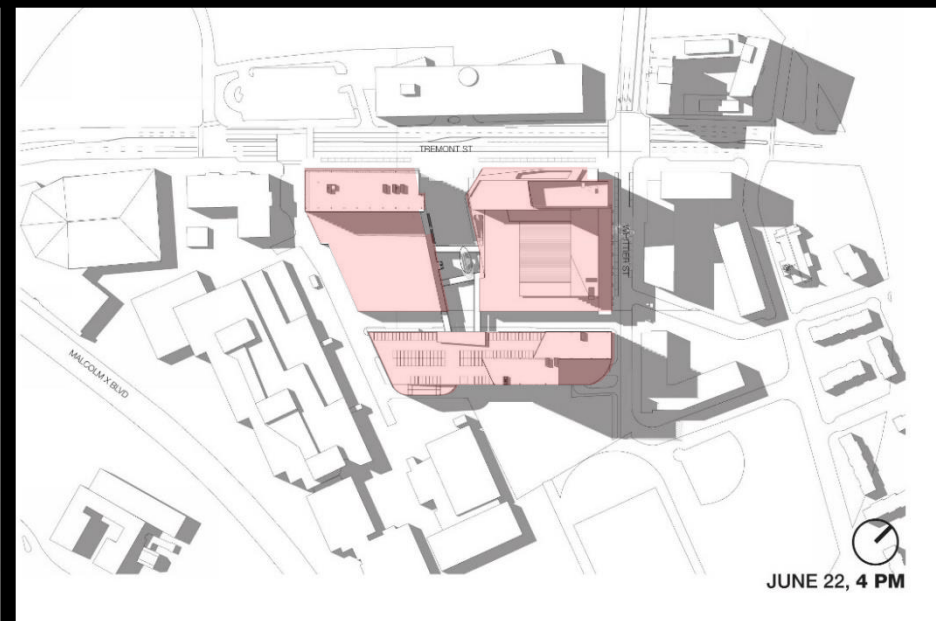
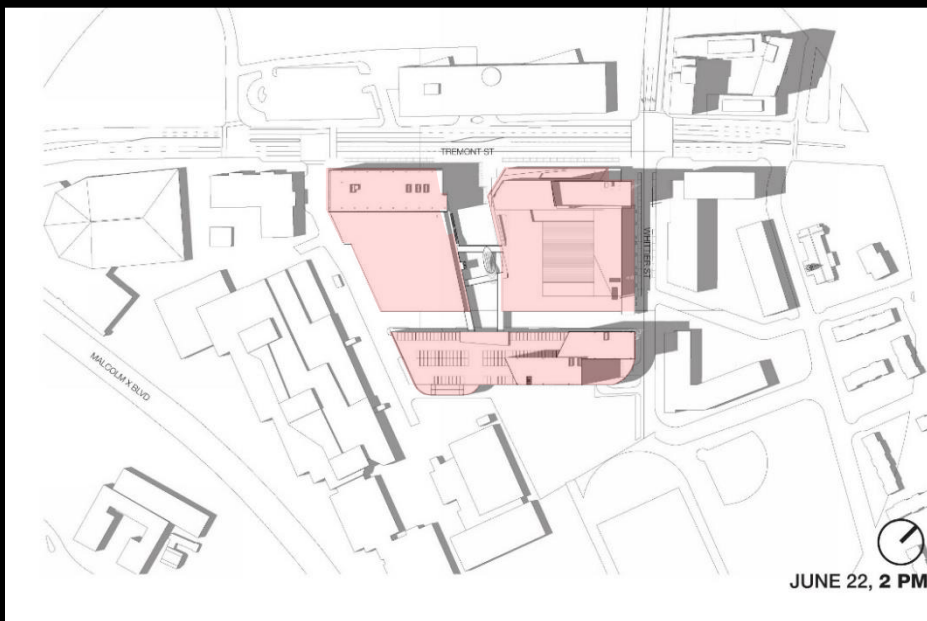
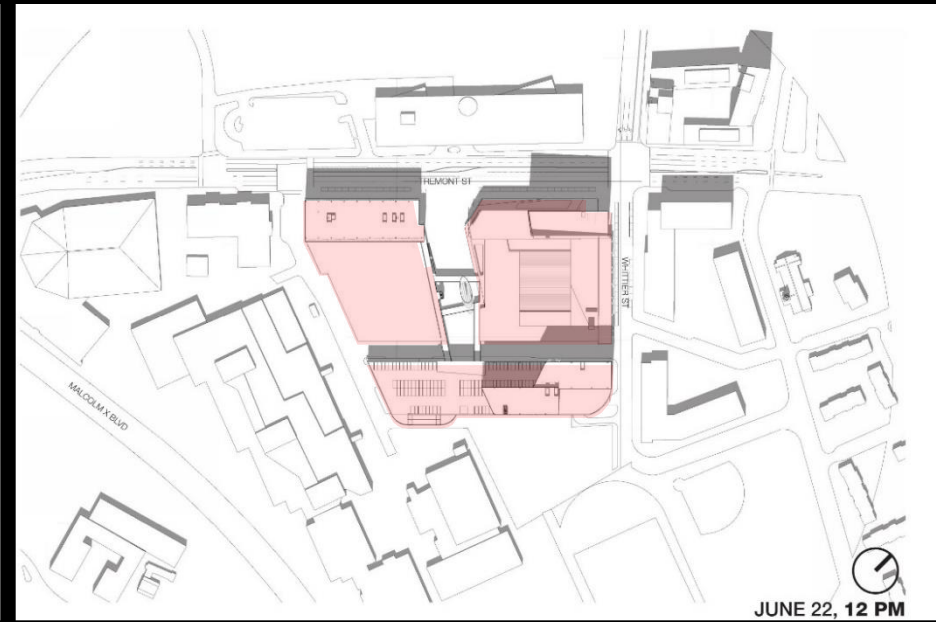
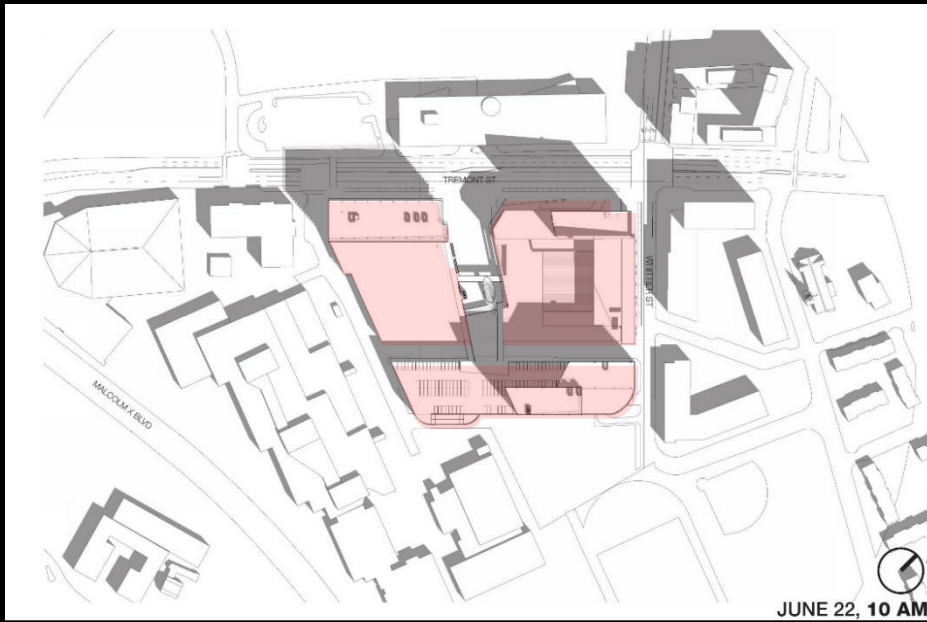
VIEW FROM TREMONT ST. – looking east



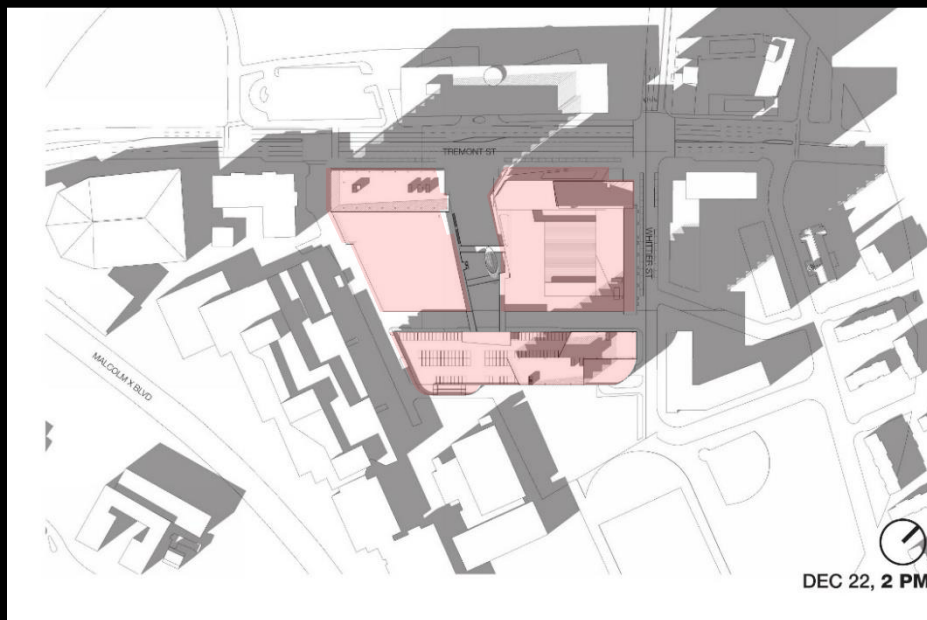
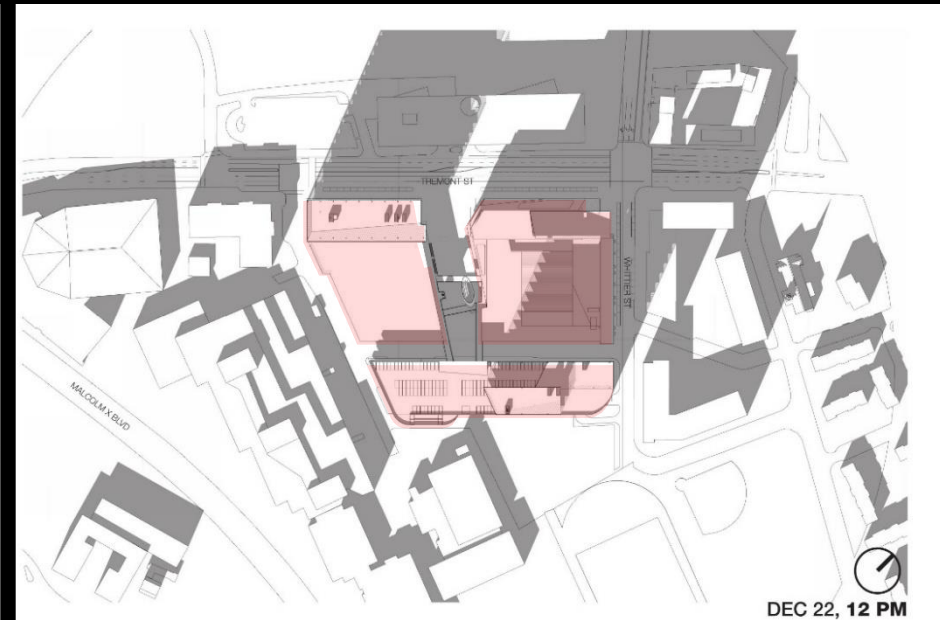
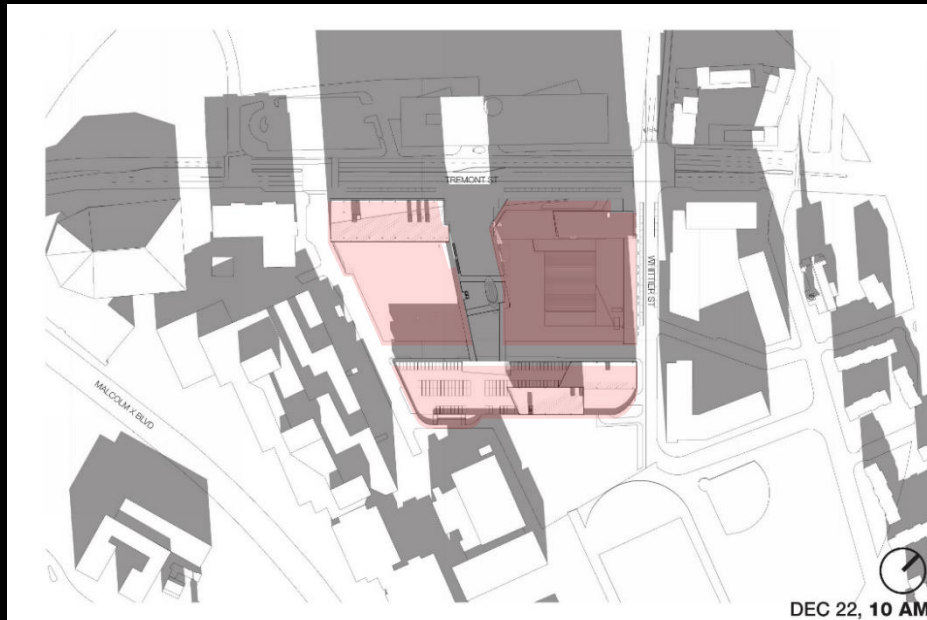


Tremont Crossing Boston

Shadow Studies



JUNE 22



Tremont Crossing Boston

NEXT STEPS