



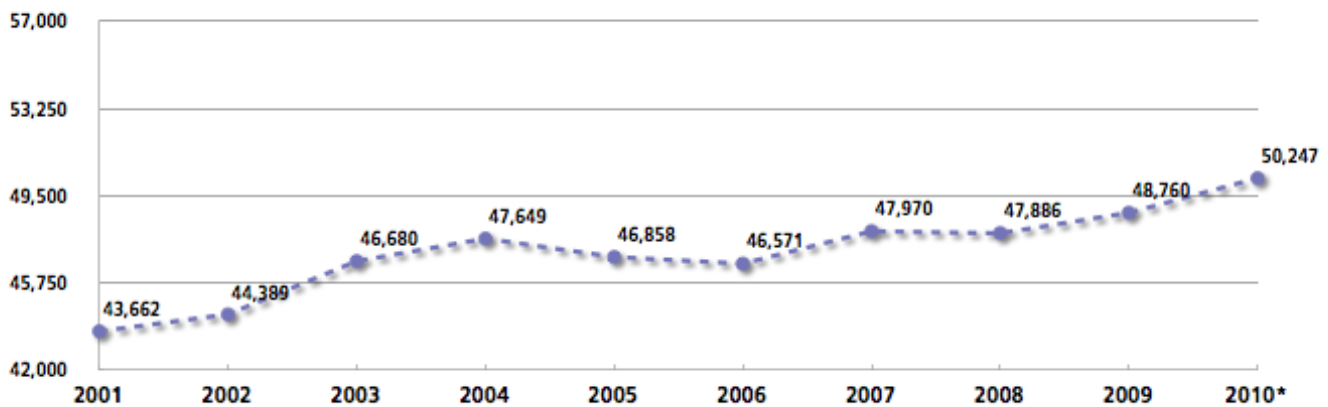
Educational Services Industry

Education is one of the larger industries in Boston, making up 7.6% of total employment in Boston in 2010. This ranks education 5th amongst the 20 major industrial sectors identified by the Bureau of Labor Statistics (BLS)¹. The education industry includes colleges, universities, secondary schools, and other education support services.

Employment

Today, Boston's education industry employs more than 50,000 people. The bulk of employment is within colleges and universities. Overall, the education industry employment has experienced very healthy job growth over the last decade. Since 2001, education industry employment in Boston has increased by nearly 13%. The industry actually increased employment from the 2001 economic recession, adding about 3,000 jobs by 2006. After the economic recession of 2008, employment increased by an additional 2,400 jobs.

Number of Education Jobs



Source: Massachusetts Department of Workforce Development, US Bureau of Economic Analysis, Boston Redevelopment Authority (BRA) Research Division Analysis.

*2010 employment data is a preliminary estimate based on 2010 annual data from DWD and 2009 BEA data.

The largest occupations in the educational services industry in Boston include elementary school teachers, teacher assistants, and secondary school teachers. Below is a list of the top ten education occupations in Boston by employment. These ten occupations make up approximately 46% of the educational services industry.

Top Ten Education Occupations in Boston by Employment

<u>Job Title:</u>	<u>Total</u>
Office Clerk, General.....	1,739
Executive Secretaries and Administrative Assistants.....	1,735
Postsecondary Teachers, All Other.....	1,593
Elementary School Teachers, Except Special Education.....	1,404
Secretaries, Except Legal, medical, and Executive	1,376
Education Administrators, Postsecondary.....	1,345
Janitors and Cleaners, Except Maids and housekeeping Cleaners .	1,270
Art, Drama, and Music Teachers, Postsecondary.....	1,232
Teachers Assistants	1,106
Secondary School Teachers, Except Special and Vocational Education.....	1,069

Source: Labor Market Assessment Tool 2.0, (BRA) Research Division Analysis.

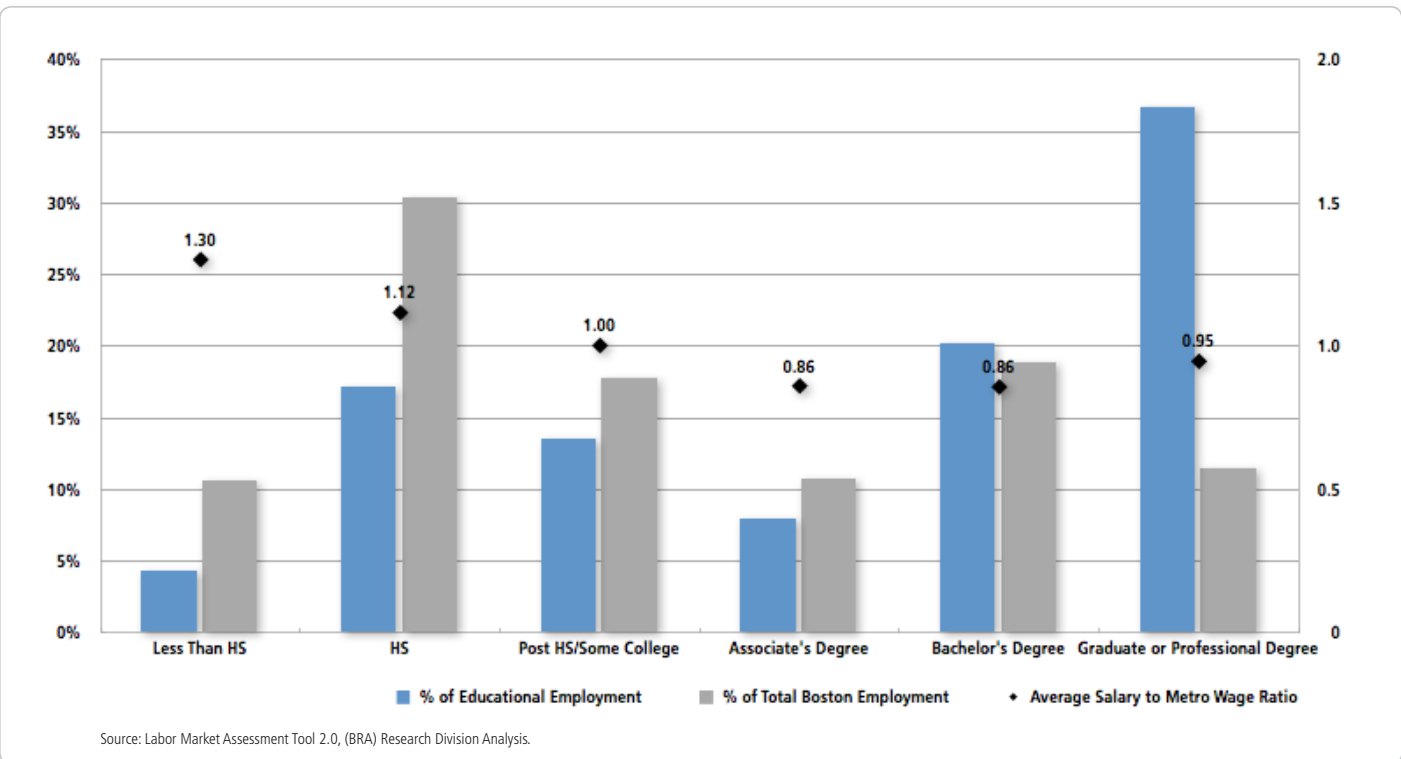
Major Employers in Education

The city's largest employers in the education services industry include Boston University, the University of Massachusetts – Boston, Northeastern University, Suffolk University, Boston College, and Simmons College. Education establishments are scattered all across Boston, with notable clusters in the Fenway, Back Bay, and Downtown neighborhoods. The attached map depicts education establishments by size in Boston.

Education, Skill Requirements, and Wages

Overall, the educational requirements for the education industry are considerable. Nearly 60% of jobs in education require a bachelor’s degree or more. This is higher than Boston as a whole, where only half as many jobs (30%) require a bachelor’s degree or more. The Industry-to-Metro wage ratio shows how wages by educational requirement look different between an industry and the Metro Boston average for the same education level. In general, the average wages for jobs in educational services vary from all jobs in the region by educational requirement.

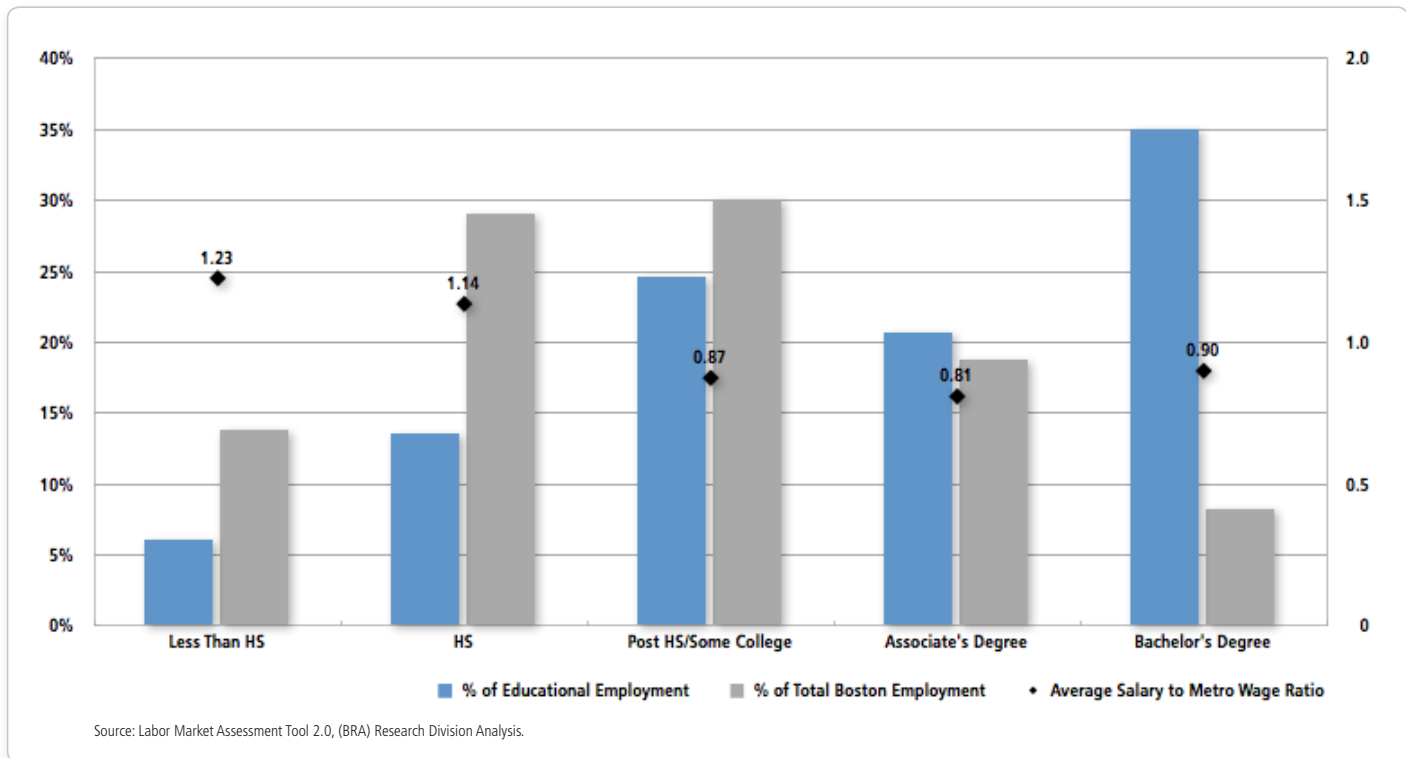
Education Requirements and Wages



The Boston Redevelopment Authority’s Labor Market Assessment Tool (LMAT)² also has different measures for job training, called job zones. The lower the job zone number, the less training, education, and previous work experience needed to perform the job. Overall, nearly 59% of jobs in education are in job zones 4 and 5. This indicates the industry overall requires considerable to extensive skills. Most occupations in education require advanced preparation, such as a bachelor’s or graduate degree, several years of work related experience, and the ability to manage or instruct others.

2. For more detailed information on LMAT, please see Introducing the Labor Market Assessment Tool Boston Redevelopment Authority Research Division publication 613.
LINK: <http://www.bostonredevelopmentauthority.org/PDF/ResearchPublications//LMAT%20Introduction.pdf>

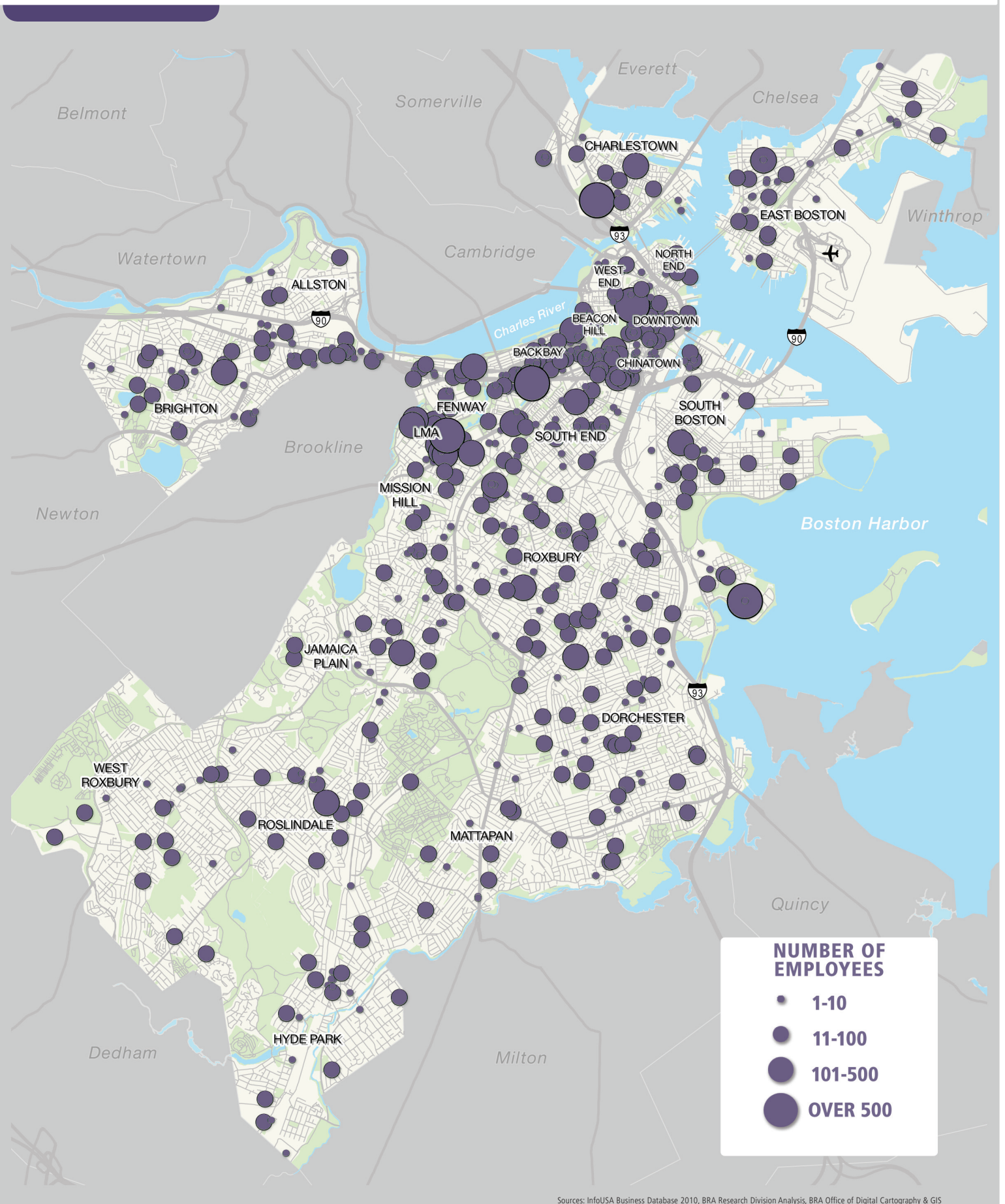
Job Zones and Wages



Sector Trends

A location quotient is used to assess the degree of regional specialization in an industry as compared to the national average. An LQ of "1" indicates an industry is concentrated in an area's economy in a proportion similar to the US overall. An LQ over "1" indicates an area of specialization. With a location quotient of 3.28, the educational services industry makes up more than three times the proportion of total jobs in Boston than at the national level. Boston specializes significantly in educational services due to the presence of various higher education institutions.

In the coming years, employment in the educational services industry in Boston is expected to increase. Using New England Economic Partnership (NEEP) projections, we estimate the educational services industry to grow by approximately 10.7%—or 5,376 jobs—by 2015³. This change would account for 12.0% of the city's total employment change during the 5 year period.



Sources: InfoUSA Business Database 2010, BRA Research Division Analysis, BRA Office of Digital Cartography & GIS

City of Boston - Industry Profiles

Rank Industry:	# OF EMPLOYEES	CHANGE IN JOBS 2001-2010	% OF TOTAL EMPLOYMENT	LOCATION QUOTIENT	AVERAGE WAGES	JOB ADDED BY 2015
1. Health Care and Social Assistance Industry	122,532	26,390	18.5%	0.67	\$67,333	13,117
2. Public Administration	78,354	(11,619)	11.8%	0.84	\$66,111	2,911
<i>State Government</i>	39,185	12,474	5.9%	1.95	-	1,456
<i>Local Government</i>	22,983	(19,428)	3.5%	0.42	-	854
<i>Federal Government</i>	16,184	1,354	2.4%	1.48	-	601
3. Finance and Insurance Industry	78,407	(5,993)	11.8%	2.28	\$170,624	1,695
4. Professional, Scientific and Technical Services Industry	73,897	1,692	11.2%	1.62	\$108,504	7,550
5. Educational Services Industry	50,247	6,585	7.6%	3.28	\$64,627	5,376
6. Accommodation and Food Services Industry	49,577	6,143	7.5%	1.06	\$25,956	4,622
7. Administrative and Support and Waste Management Remediation Services Industry	32,124	(7,675)	4.9%	1.01	\$46,005	3,286
8. Retail Trade Industry	30,477	(360)	4.6%	0.45	\$30,664	655
9. Other Services (except Public Administration)	29,279	2,967	4.4%	0.89	\$37,933	1,264
10. Real Estate and Rental and Leasing Industry	21,382	2,227	3.2%	0.75	\$80,999	465
11. Transportation and Warehousing Industry	18,537	(5,893)	2.8%	0.88	\$49,115	(426)
12. Information Industry	16,407	(5,844)	2.5%	1.28	\$88,463	1,583
13. Arts, Entertainment, and Recreation Industry	14,712	2,452	2.2%	1.00	\$79,502	1,383
14. Construction Industry	13,864	(5,794)	2.1%	0.41	\$90,825	28
15. Manufacturing Industry	9,545	(8,596)	1.4%	0.20	\$73,448	175
16. Wholesale Trade Industry	9,256	(1,672)	1.4%	0.41	\$79,231	283
17. Management of Companies and Enterprises	6,243	(4,022)	0.9%	0.86	\$122,906	643
18. Utilities Industry	2,441	(249)	0.4%	-	\$102,170	63
19. Agriculture, Forestry, Fishing and Hunting and Mining	180	(1)	0.0%	-	\$51,720	26
Total	657,461	(9,262)	99.3%	-	\$78,375	47,610

- Projections for 2010-2015 are based upon the New England Economic Partnership (NEEP) May 2011 forecast.
- 2010 employment data is a preliminary estimate based on 2010 annual data from DWD and 2009 BEA data.
- Because of low employment, Agriculture and Mining were combined for this table.

Produced by the Research Division, July 2012

Alvaro Lima, Director of Research
Mark Melnik
John Avault
Nanette Dyer Blake
Derek Shooster
Nicoya Borella