



# Demographic and Socio-economic Trends in Boston

What we've learned from the  
latest Census data



City of Boston  
Office of the Mayor  
Martin J. Walsh

 BOSTON  
REDEVELOPMENT AUTHORITY

Boston Redevelopment Authority  
Research Division  
September 2014

---

Produced by the BRA Research Division:

Alvaro Lima – Director  
Mark Melnik – Deputy Director  
Kelly Dowd – Research Manager  
Kevin Kang – Research Associate  
Nicoya Borella – Research Assistant

Interns:  
Shipan Chen  
Christina Kim

*The staff listed above reflect the Research Division staff at the time of this report's original release.*

The BRA Research Division strives to understand the current environment of the City to produce quality research and targeted information that will inform and benefit the residents and businesses of Boston. The Division conducts research on Boston's economy, population, and commercial markets for all departments of the BRA, the City of Boston, and related organizations.

The information provided in this report is the best available at the time of its publication.

All or partial use of this report must be cited. Our preferred citation is as follows:  
Boston Redevelopment Authority/Research Division, September 2014

For more information about research produced by the Boston Redevelopment Authority, please contact the Research Division at [research@boston.gov](mailto:research@boston.gov)

# Outline of Presentation

---

- Selected demographic trends
  - Growth
  - Diversity
  - Youth
  - Education
- Selected socio-economic trends
  - Historic unemployment trends



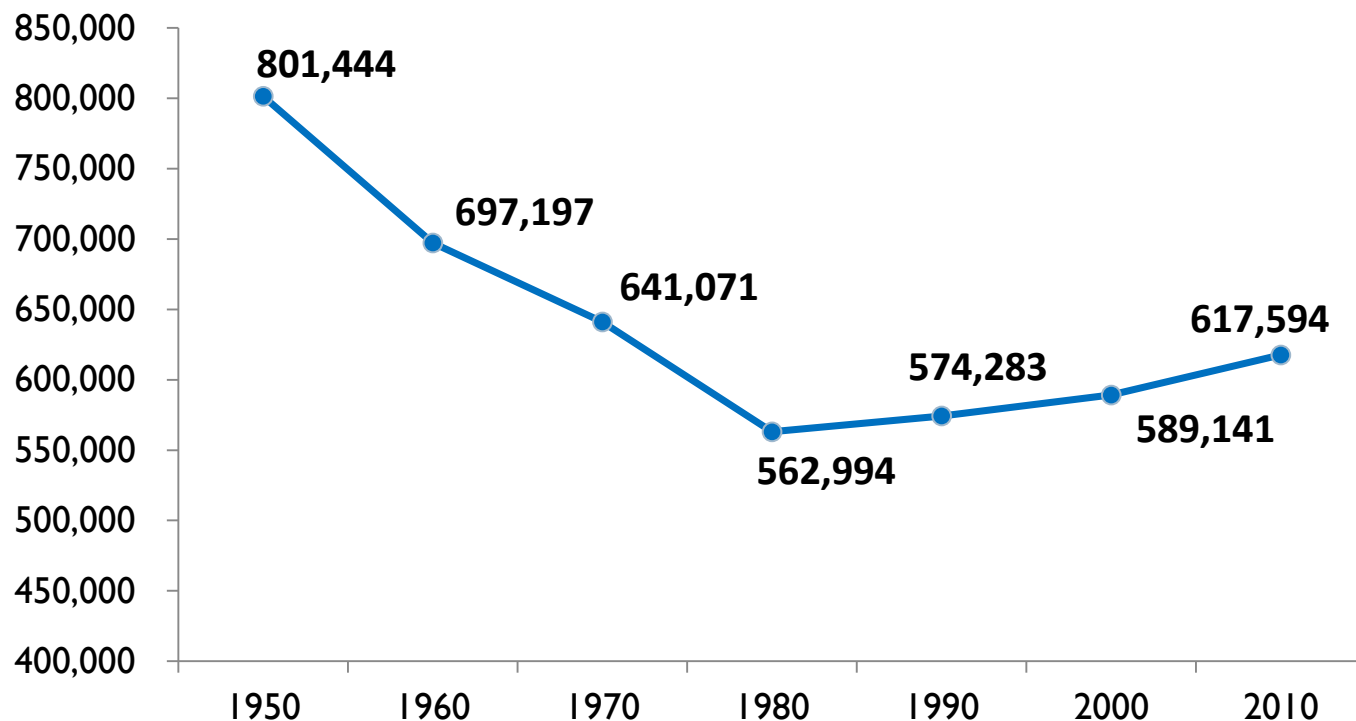
---

# Boston is Growing



# Historic Trends – Boston's Population

- Boston reached its population peak in 1950.
- The population, as in many major U.S. cities, declined after 1950.
- In recent decades, the City's population has grown.
- The 2010 Census marked the first time since 1970 that Boston's population has been over 600,000.



## Major Northeastern Cities and Population Change, 2010 Census

- Boston's population growth since 2000 compares favorably to most other northeastern cities.

City	Total Population		Population Change 2000-2010	
	2000	2010	N	%
Washington (DC)	572,059	601,723	29,664	5.2%
Worcester (MA)	172,648	181,045	8,397	4.9%
<b>Boston (MA)</b>	<b>589,141</b>	<b>617,594</b>	<b>28,453</b>	<b>4.8%</b>
Cambridge (MA)	101,355	105,162	3,807	3.8%
Elizabeth (NJ)	120,568	124,969	4,401	3.7%
Hartford (CT)	121,578	124,775	3,197	2.6%
Providence (RI)	173,618	178,042	4,424	2.5%
New York (NY)	8,008,278	8,175,133	166,855	2.1%
Newark (NJ)	273,546	277,140	3,594	1.3%
Springfield (MA)	152,082	153,060	978	0.6%
Philadelphia (PA)	1,517,550	1,526,006	8,456	0.6%
Baltimore (MD)	651,154	620,961	-30,193	-4.6%
Pittsburgh (PA)	334,563	305,704	-28,859	-8.6%
Buffalo (NY)	292,648	261,310	-31,338	-10.7%

## Large U.S. Cities and Population Change, 2010 Census

- Boston's population growth rate between 2000 and 2010 is higher than the rates for New York and San Francisco.

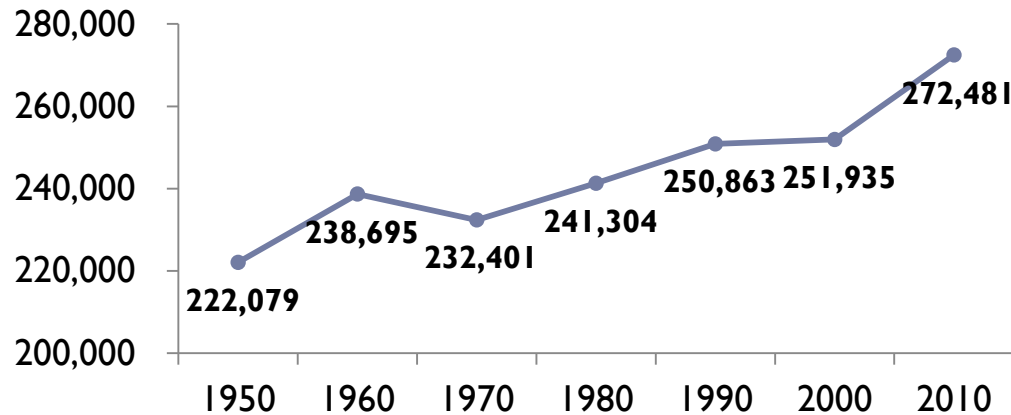
City	Total Population		Population Change 2000-2010	
	2000	2010	N	%
Fort Worth (TX)	534,694	741,206	206,512	38.6%
Charlotte (NC)	540,828	731,424	190,596	35.2%
Austin (TX)	656,562	790,390	133,828	20.4%
San Antonio (TX)	1,144,646	1,327,407	182,761	16.0%
El Paso (TX)	563,662	649,121	85,459	15.2%
Jacksonville (FL)	735,617	821,784	86,167	11.7%
Columbus (OH)	711,470	787,033	75,563	10.6%
Nashville (TN)	545,524	601,222	55,698	10.2%
Phoenix (AZ)	1,321,045	1,445,632	124,587	9.4%
Seattle (WA)	563,374	608,660	45,286	8.0%
Houston (TX)	1,953,631	2,099,451	145,820	7.5%
San Diego (CA)	1,223,400	1,307,402	84,002	6.9%
San Jose (CA)	894,943	945,942	50,999	5.7%
Washington (DC)	572,059	601,723	29,664	5.2%
Indianapolis (IN)	781,870	820,445	38,575	4.9%
<b>Boston (MA)</b>	<b>589,141</b>	<b>617,594</b>	<b>28,453</b>	<b>4.8%</b>
San Francisco (CA)	776,733	805,235	28,502	3.7%
Los Angeles (CA)	3,694,820	3,792,621	97,801	2.6%
New York City (NY)	8,008,278	8,175,133	166,855	2.1%
Dallas (TX)	1,188,580	1,197,816	9,236	0.8%

Note: The table above shows the top 20 cities in population growth among the largest 25 cities in the United States.  
Source: U.S. Census Bureau, BRA Research Division Analysis

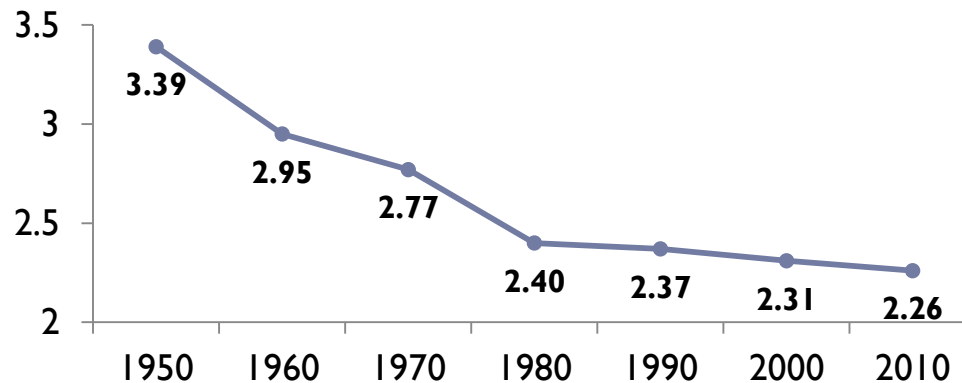
# Housing Units and Average Household Size

- Boston's housing stock has grown consistently over the last 40 years with an 8.2% growth rate between 2000 and 2010.

## Housing Units



## Average Household Size





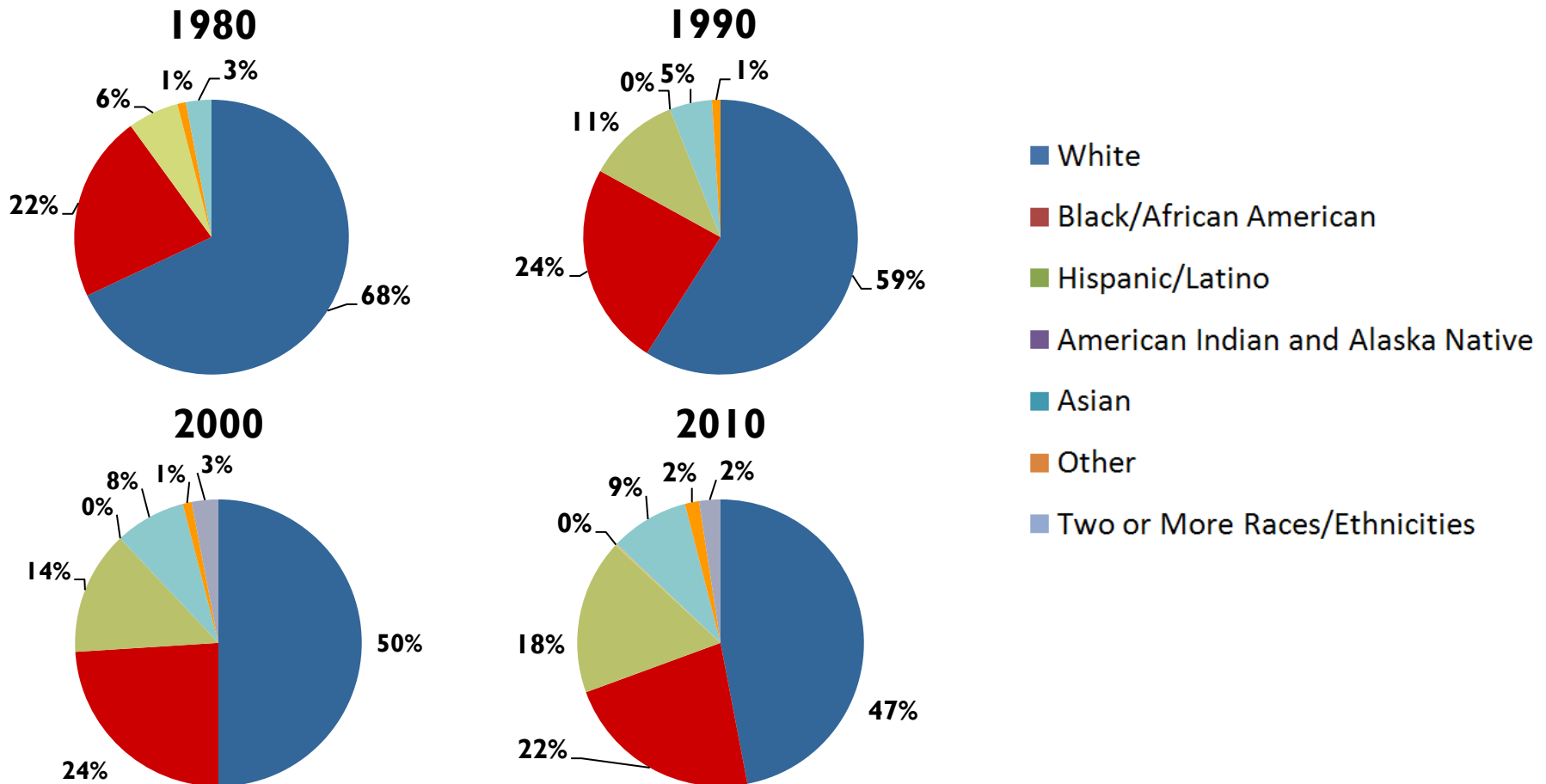
---

# Boston is Diverse



# Racial and Ethnic Breakdown for Boston's Population, 1980-2010

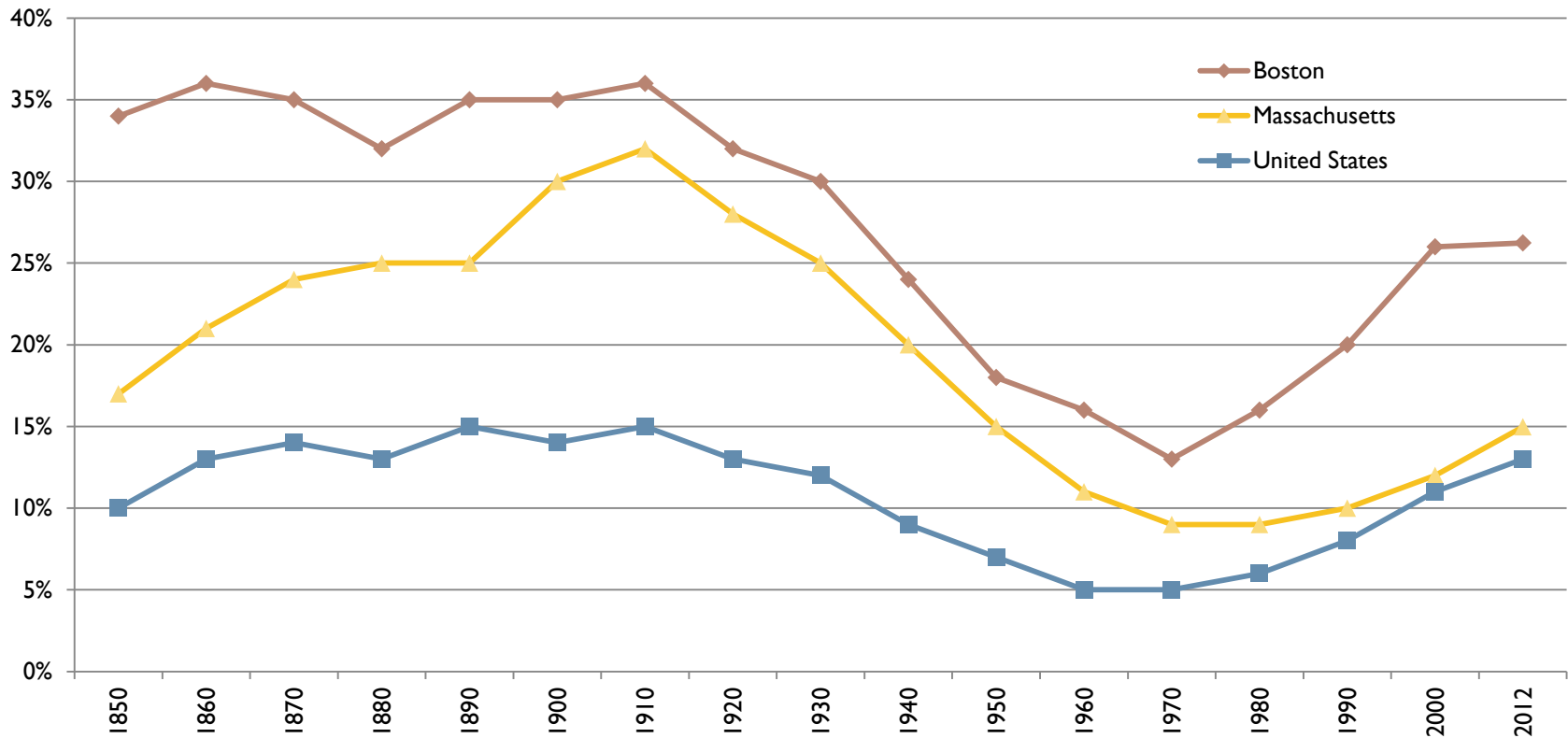
- Over the last several decades, the racial and ethnic composition of Boston has changed a great deal.
- In 1980, close to 70% of Boston's Population was white. Today, only half of Boston is white.
- The last two Census reports show Boston as a “majority-minority” city.



Note: 2000 was the first year the Census compiled data on individuals who identified themselves as “multiracial”  
 Source: U.S. Census Bureau, BRA Research Division Analysis.

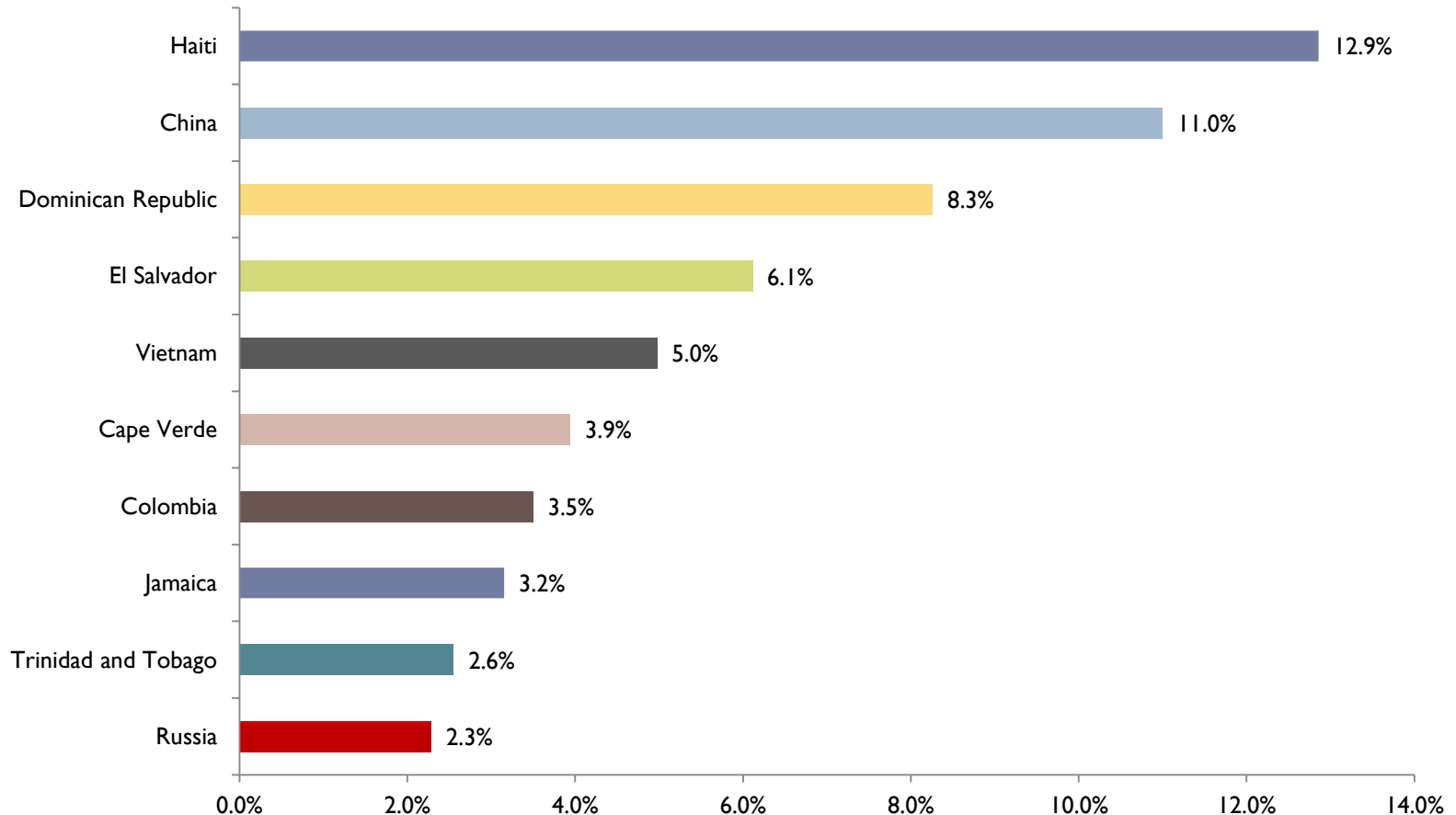
# Proportion of the Population that is Foreign-Born, 1850-2012

- Historically, Boston has had a greater proportion of foreign-born residents than both Massachusetts and the nation as a whole.
- Since the 1970s, the proportion of foreign-born residents in Boston has grown dramatically.



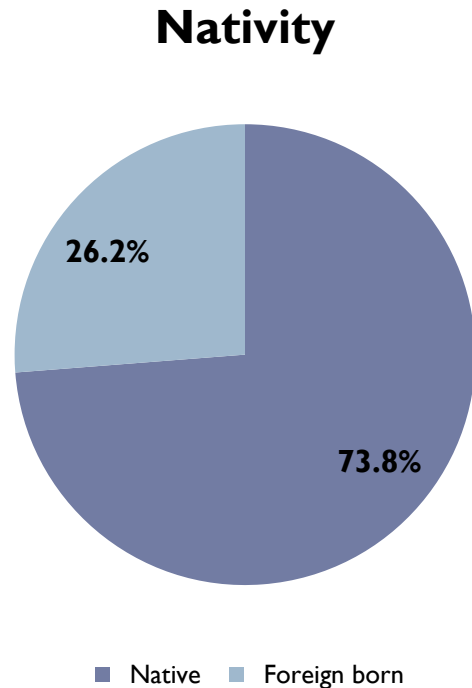
# Countries of Origin for Boston's Foreign-Born Population, 2012

- Most of Boston's immigrants today come from the Caribbean, Latin America, and Asia.
- This plays a major factor in Boston being a “majority-minority” city.



# 25 Largest U.S. Cities by Foreign Born Population

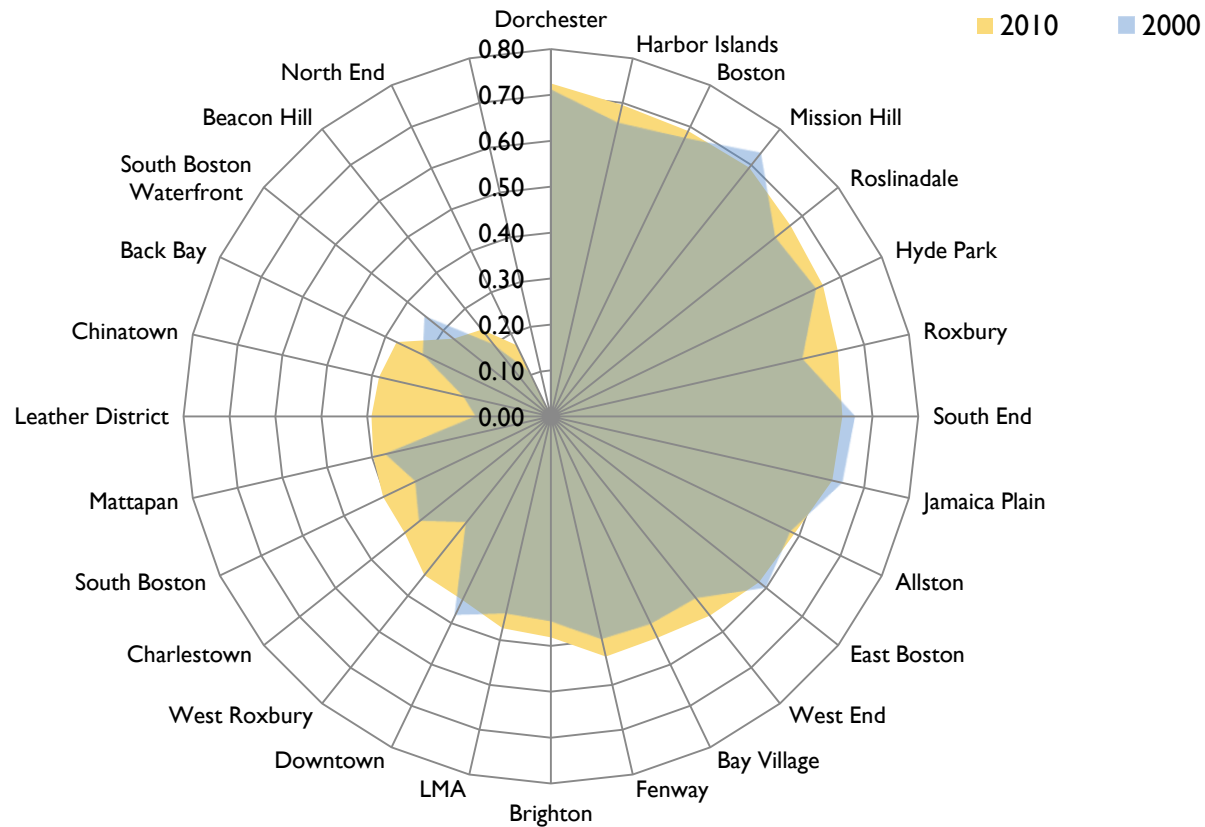
- Boston ranks 7<sup>th</sup> among the 25 largest cities in the U.S. in proportion of the population that is foreign-born.



Foreign Born Rank	% Foreign Born	City	Population Rank
1	38.6%	Los Angeles, California	2
2	38.2%	San Jose, California	10
3	37.6%	New York, New York	1
4	35.9%	San Francisco, California	14
5	27.9%	Houston, Texas	4
6	26.4%	San Diego, California	8
<b>7</b>	<b>26.2%</b>	<b>Boston, Massachusetts</b>	<b>21</b>
8	24.2%	Dallas, Texas	9
9	24.1%	El Paso, Texas	19
10	21.4%	Chicago, Illinois	3
11	20.5%	Phoenix, Arizona	6
12	19.0%	Fort Worth, Texas	16
13	18.6%	Seattle, Washington	22
14	18.1%	Austin, Texas	11
15	15.5%	Charlotte, North Carolina	17
16	14.3%	Washington, District of Columbia	23
17	14.3%	San Antonio, Texas	7
18	12.0%	Philadelphia, Pennsylvania	5
19	11.7%	Nashville, Tennessee	24
20	11.1%	Columbus, Ohio	15
21	9.5%	Jacksonville, Florida	12
22	8.0%	Indianapolis, Indiana	13
23	7.5%	Baltimore, Maryland	25
24	5.8%	Memphis, Tennessee	20
25	5.0%	Detroit, Michigan	18

# Neighborhood District Diversity Index: 2000-2010

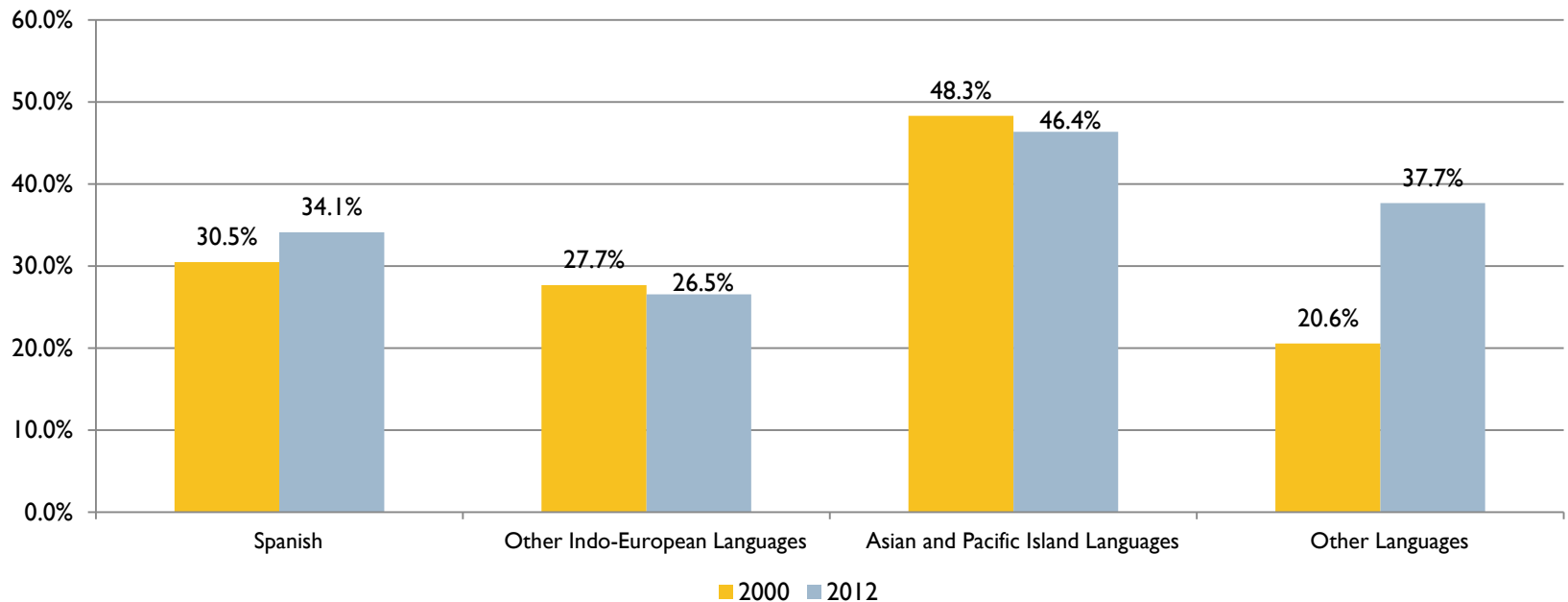
- Most of Boston's neighborhoods are more diverse today than in 2000.



# Linguistic Isolation

- ▶ In 2012, 12.6% of households in Boston were without a resident 14 years or older who spoke English very well; this was an increase from 10.7% of households in 2000.
- ▶ The rise in linguistically isolated Spanish households reflects the high growth rate of foreign-born Hispanic households between 2000 and 2012.

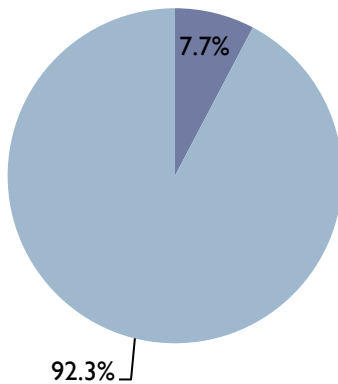
## Percentage of Linguistically Isolated Households by Household Language



# English Proficiency

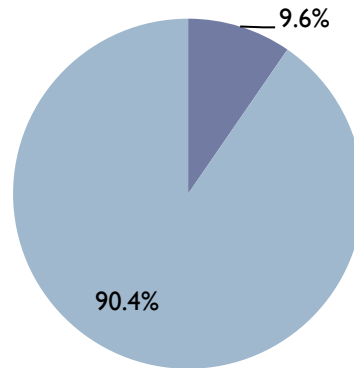
- ▶ An estimated 9.6% of Bostonians had Limited English Proficiency in 2012; this increased about 2% from the same statistic in 2000.
- ▶ A higher percentage of foreign born residents have Limited English Proficiency in 2012 than in 2000.

**LEP of Boston  
2000**



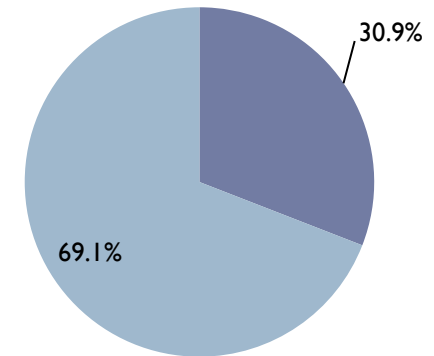
■ Limited English Proficiency  
■ English Proficient

**LEP of Boston  
2012**



■ Limited English Proficiency  
■ English Proficient

**LEP of Boston's Foreign  
Born Population 2012**



■ Limited English Proficiency  
■ English Proficient



---

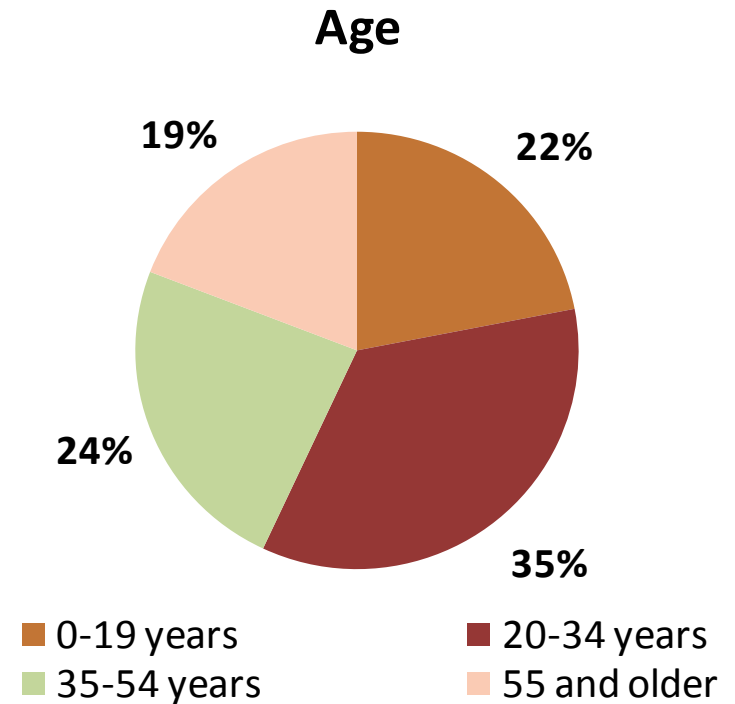
# Boston is Young



# Breakdown of Boston's Population by Age

- Boston is a young city; currently it has the highest concentration of young adults (20-34) among the 25 largest cities in the U.S.

City	20 to 34-Year-Olds	% of Total Population	Location Quotient
Boston	216,213	35.0%	1.73
Austin	251,064	31.8%	1.57
Washington DC	188,855	31.4%	1.55
Atlanta	127,101	30.3%	1.49
Seattle	181,501	29.8%	1.47
San Francisco	228,738	28.4%	1.40
Chicago	738,578	27.4%	1.35
Dallas	314,728	26.3%	1.29
Houston	545,071	26.0%	1.28
Baltimore	160,024	25.8%	1.27
Philadelphia	392,776	25.7%	1.27
Los Angeles	953,443	25.1%	1.24
New York	2,035,030	24.9%	1.23
San Antonio	304,784	23.0%	1.13
Phoenix	330,885	22.9%	1.13



Note: The table above shows the top 15 cities in proportion of young adults among the largest 25 cities in the United States.  
 Source: 2010 U.S. Census Bureau, BRA Research Division Analysis

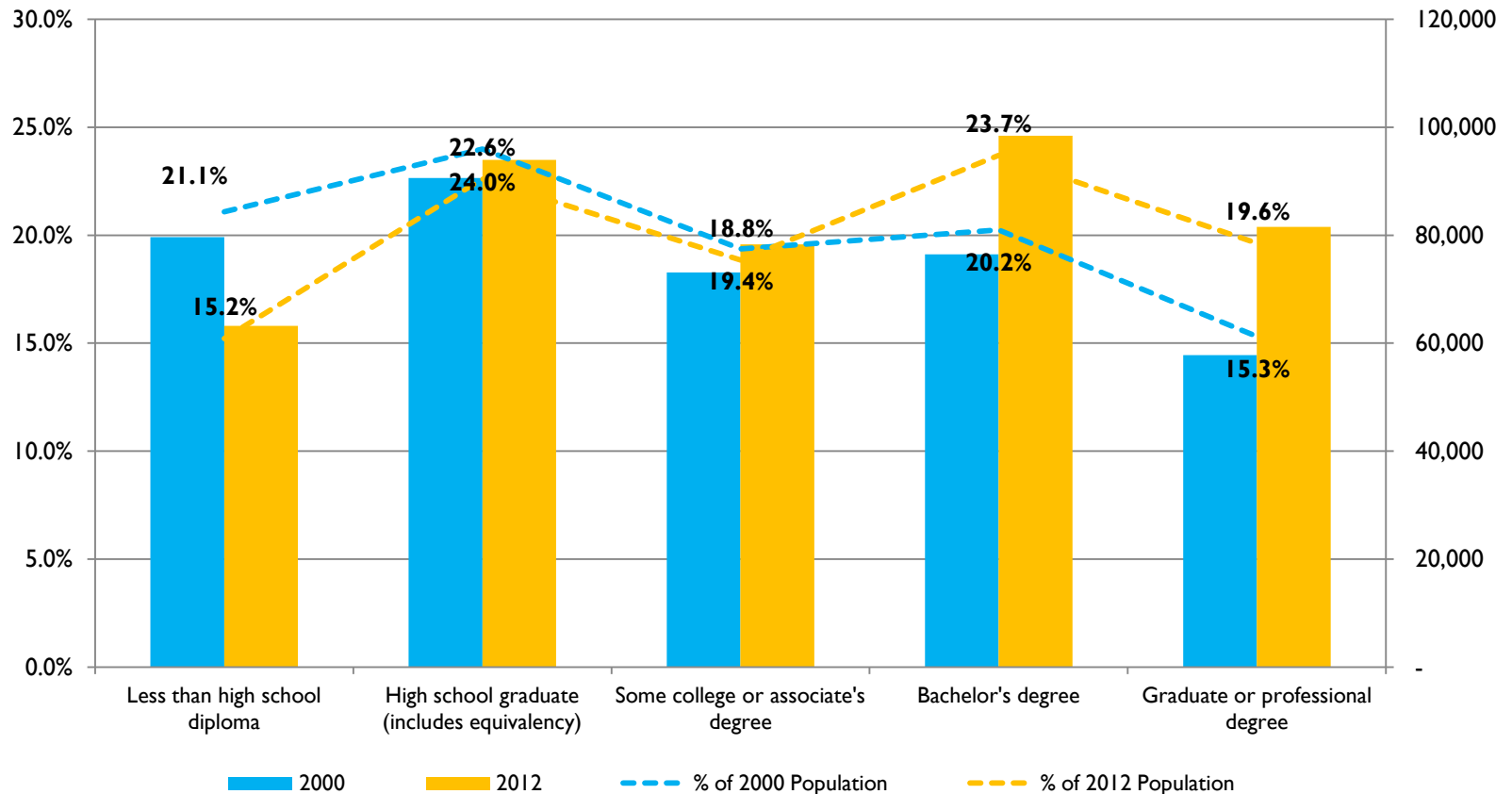
---

# Boston is Educated



# Educational Attainment of Population, 2000 and 2012

- Boston has one of the most highly-educated populations among major U.S. cities. According to the 2012 American Community Survey, 43.3% of Boston's population 25 years and over has at least a bachelor's degree, ranking Boston 5<sup>th</sup> amongst the 25 largest cities in the nation.



# Educational Attainment of the 25 Largest U.S. Cities by Bachelor's Degree or Greater (population 25 years and older)

Rank	City	Bachelor's Degree	Graduate or Professional Degree	Bachelor's Degree or Higher
1	Seattle, Washington	34.5%	23.2%	57.7%
2	San Francisco, California	32.9%	20.7%	53.6%
3	Washington District of Columbia	23.0%	30.0%	53.0%
4	Austin, Texas	29.5%	15.9%	45.4%
5	Boston, Massachusetts	23.7%	19.6%	43.3%
6	San Diego, California	24.9%	17.0%	42.0%
7	Charlotte, North Carolina	27.4%	12.9%	40.3%
8	San Jose, California	23.5%	14.8%	38.2%
9	Nashville, Tennessee	23.1%	13.0%	36.2%
10	New York, New York	20.5%	14.1%	34.7%
11	Chicago, Illinois	20.6%	13.9%	34.5%
12	Columbus, Ohio	22.4%	11.6%	34.0%
13	Los Angeles, California	21.0%	10.4%	31.5%
14	Houston, Texas	18.6%	11.1%	29.7%
15	Dallas, Texas	18.6%	11.0%	29.6%
16	Indianapolis, Indiana	18.8%	9.6%	28.3%
17	Baltimore, Maryland	14.3%	12.6%	26.9%
18	Phoenix, Arizona	17.0%	9.7%	26.7%
19	Fort Worth, Texas	16.8%	9.0%	25.8%
20	Jacksonville, Florida	18.0%	7.6%	25.6%
21	San Antonio, Texas	15.2%	9.1%	24.3%
22	Philadelphia, Pennsylvania	14.0%	10.3%	24.3%
23	Memphis, Tennessee	14.8%	9.0%	23.8%
24	El Paso, Texas	15.5%	7.3%	22.8%
25	Detroit, Michigan	7.8%	5.2%	13.0%

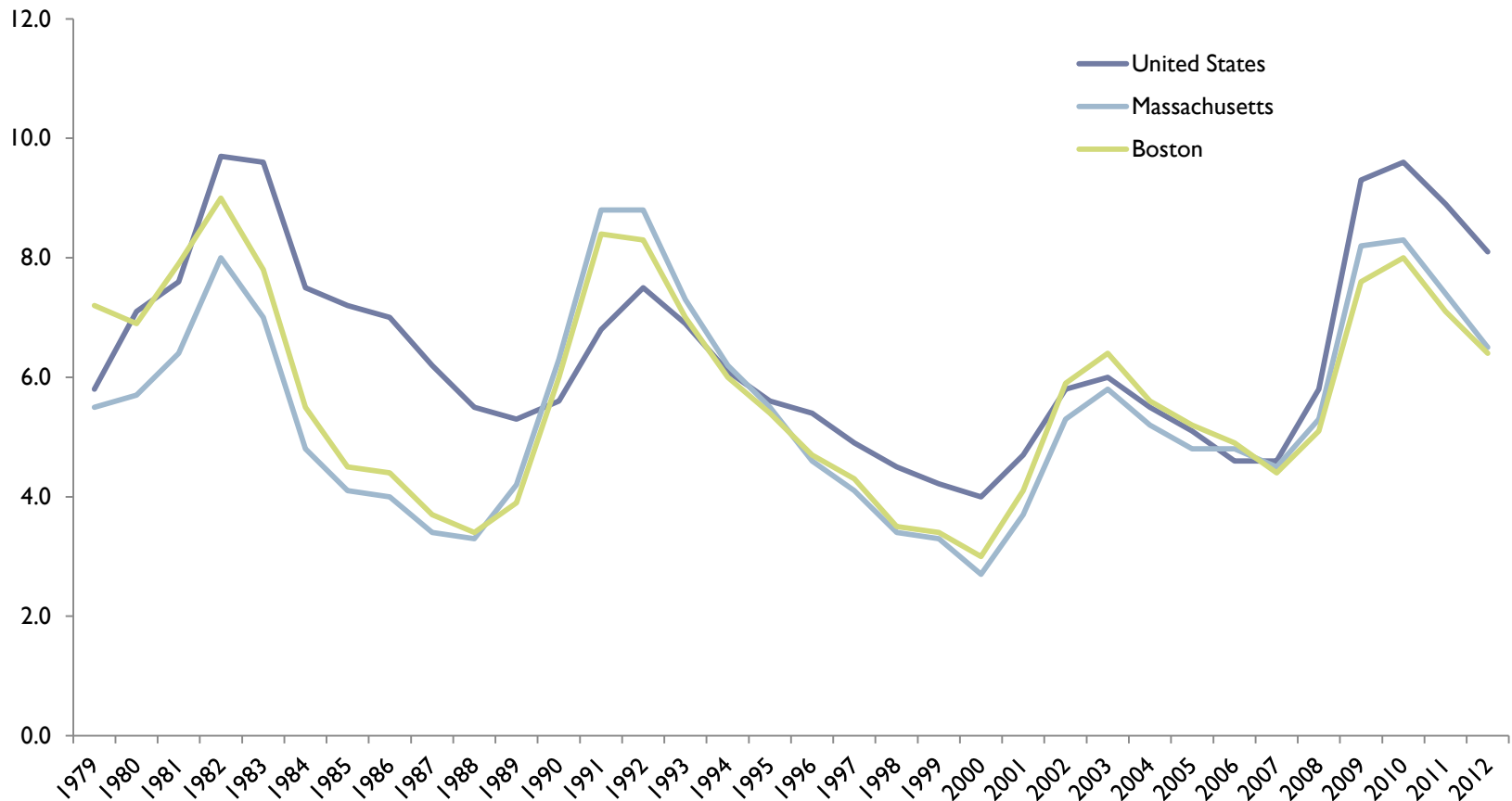
---

# Socio-economic Characteristics



# Historic Unemployment Trend: 1979-2012

- Boston's unemployment rate is typically lower than national and state rates.
- As of July 2013, Boston's unemployment rate was 7.6; one point lower than the national average.



# Household Income

- ▶ The distribution of income in Boston is more polarized than in 2000.
- ▶ As demonstrated by the decreased location quotients, the share of middle income households in Boston is getting smaller.

<u>2000</u>				<u>2012</u>			
Household Income (1999 Inflation-Adjusted Dollars)	Estimate	%	Location Quotient	Household Income (2012 Inflation-Adjusted Dollars)	Estimate	%	Location Quotient
Less than \$10,000	37,230	15.5%	1.63	Less than \$10,000	35,448	14.3%	1.87
\$10,000 to \$14,999	15,764	6.6%	1.04	\$10,000 to \$14,999	14,835	6.0%	1.06
\$15,000 to \$24,999	27,276	11.4%	0.89	\$15,000 to \$24,999	25,708	10.4%	0.94
\$25,000 to \$34,999	27,496	11.5%	0.90	\$25,000 to \$34,999	16,725	6.8%	0.65
\$35,000 to \$49,999	35,928	15.0%	0.91	\$35,000 to \$49,999	26,860	10.9%	0.79
\$50,000 to \$74,999	41,496	17.3%	0.89	\$50,000 to \$74,999	36,965	15.0%	0.83
\$75,000 to \$99,999	23,784	9.9%	0.97	\$75,000 to \$99,999	26,276	10.6%	0.89
\$100,000 to \$149,999	18,496	7.7%	1.00	\$100,000 to \$149,999	34,071	13.8%	1.11
\$150,000 to \$199,999	5,491	2.3%	1.04	\$150,000 to \$199,999	13,006	5.3%	1.14
\$200,000 or more	6,642	2.8%	1.17	\$200,000 or more	17,360	7.0%	1.54



# Planning District Characteristics

Unemployment by Planning District	2012		2000	
	Unemployment Rate	Poverty Status	Unemployment Rate	Poverty Status
Boston	10.2%	21.4%	7.2%	19.5%
Allston-Brighton	5.9%	23.5%	5.3%	23.0%
Back Bay-Beacon Hill	3.4%	10.2%	6.0%	10.3%
Central	5.0%	19.0%	8.9%	16.9%
Charlestown	7.5%	17.8%	4.1%	17.5%
East Boston	10.5%	17.0%	7.3%	19.5%
Fenway-Kenmore	10.5%	40.2%	11.4%	37.3%
Hyde Park	12.7%	11.0%	5.5%	10.4%
Jamaica Plain	6.9%	26.6%	5.5%	20.9%
Mattapan	17.1%	21.1%	9.7%	22.3%
North Dorchester	12.2%	27.7%	9.6%	20.8%
Roslindale	9.8%	15.3%	4.9%	13.6%
Roxbury	18.0%	32.6%	11.6%	27.1%
South Boston	7.1%	18.5%	5.0%	17.3%
South Dorchester	15.4%	19.0%	7.9%	17.3%
South End	10.7%	27.4%	6.9%	23.9%
West Roxbury	6.7%	5.9%	3.0%	6.4%