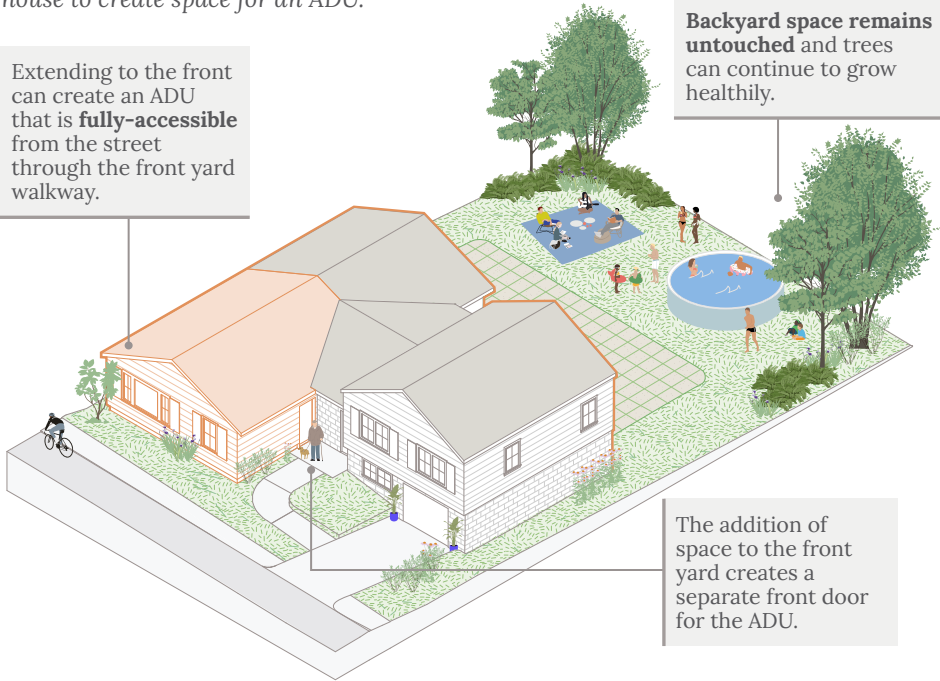


# ATTACH AN ADU IN YOUR FRONT YARD



Do you have extra space in your front yard? Consider extending the front of your house to create space for an ADU.

Extending to the front can create an ADU that is **fully-accessible** from the street through the front yard walkway.

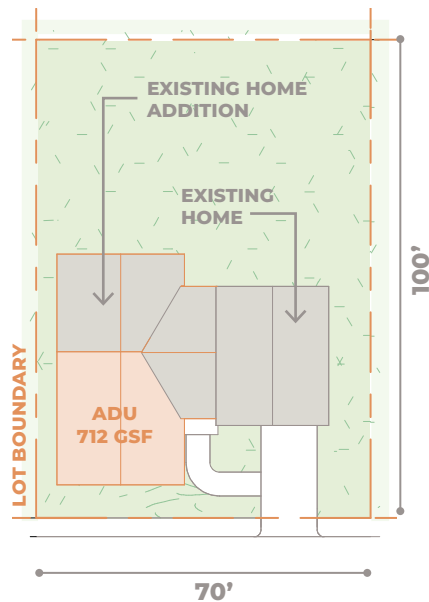


Backyard space remains **untouched** and trees can continue to grow healthily.

The addition of space to the front yard creates a separate front door for the ADU.

In this design, we are showing an ADU that shares a front yard walkway with the existing house, but has its own front door. Since the ADU is close to the street and is part of a home with only two units, sprinklers are not required. This design is illustrating a fully-accessible ADU, but the same approach could be used for an ADU that is not accessible.

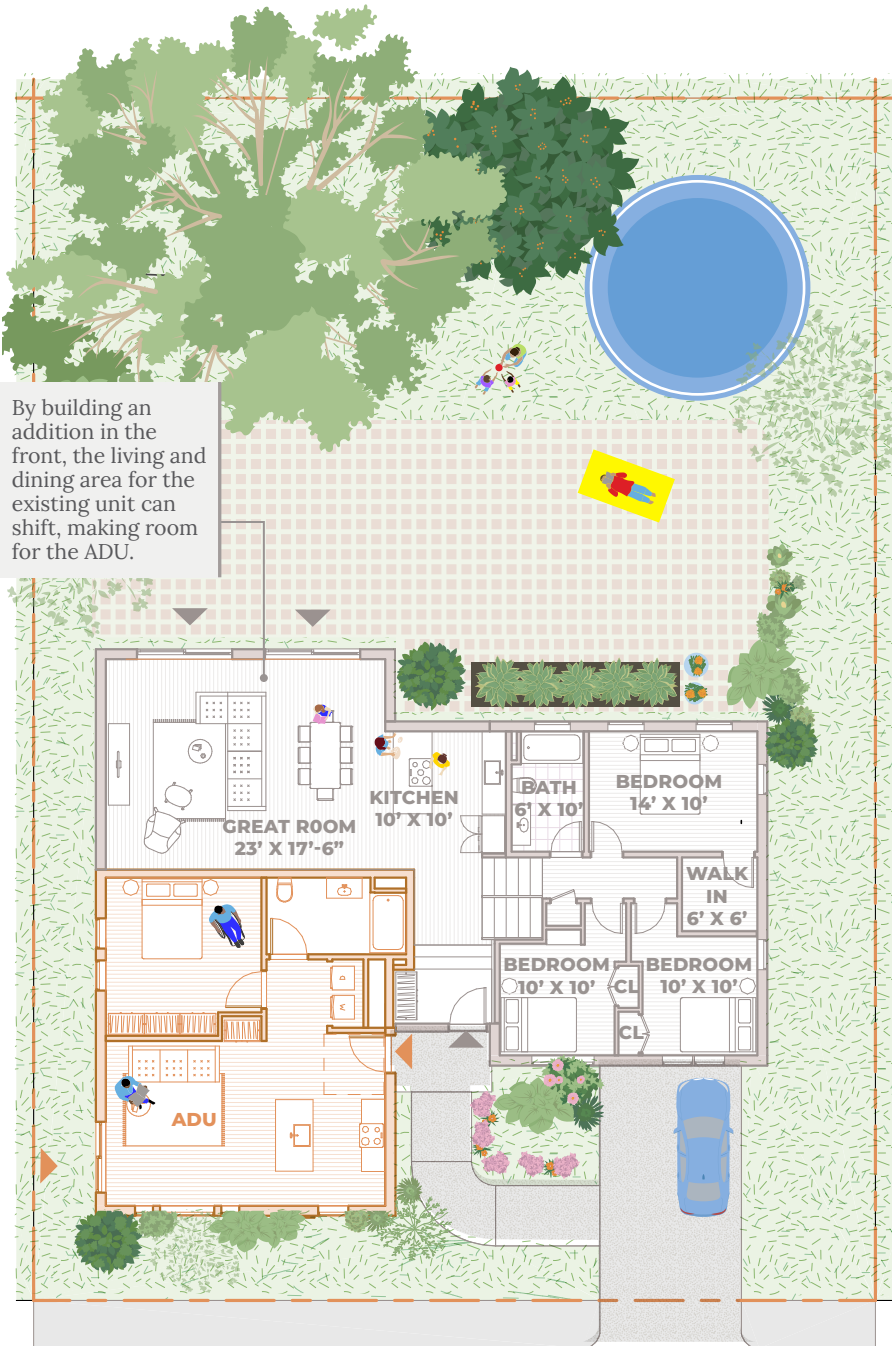
Attaching an ADU on a larger lot can be an excellent way to provide living space for a family member or to generate rental income while minimizing impact to the backyard. It also leaves plenty of space for existing and new trees and plants to thrive.



VIEW FROM THE STREET: EXISTING HOUSE



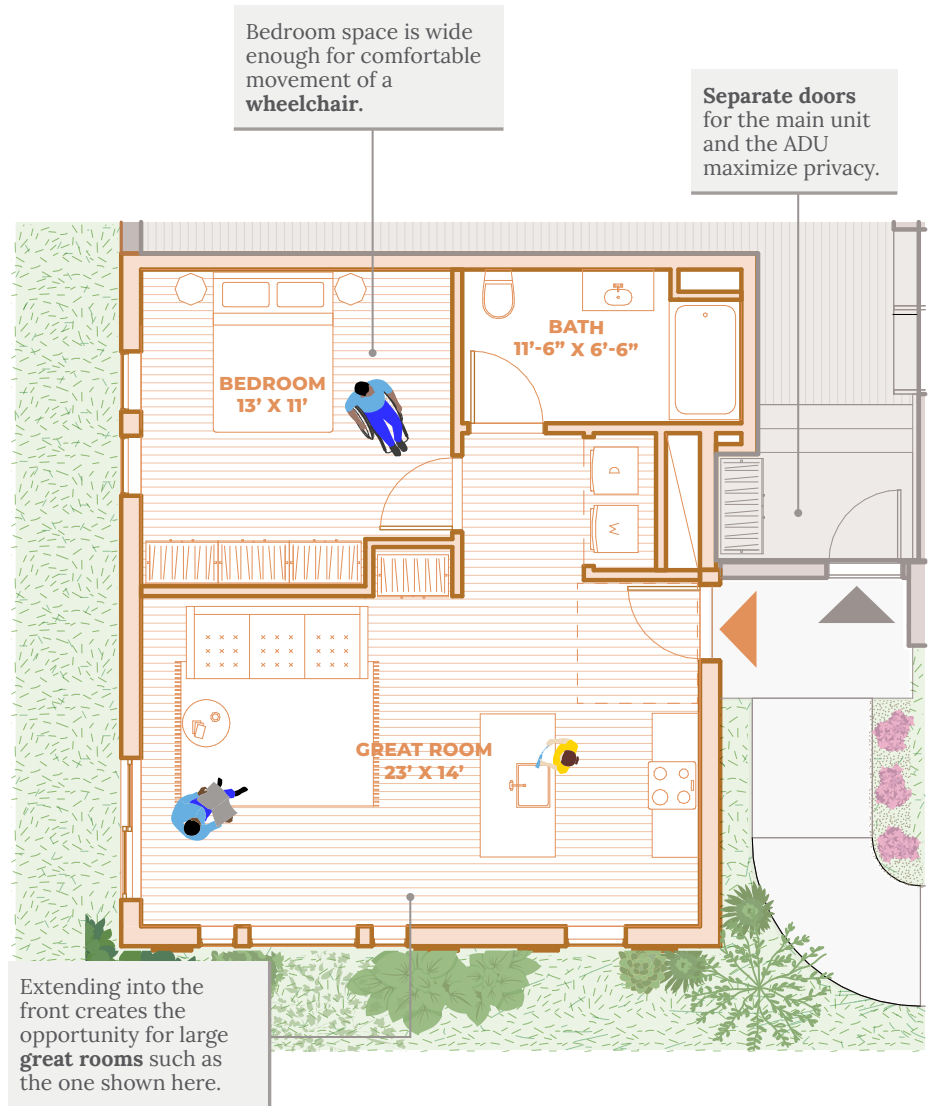
VIEW FROM THE STREET: EXISTING HOUSE WITH ADU AND ADDITION



FIRST FLOOR: EXISTING HOUSE AND ADU ADDITION

1/16" = 1'-0"

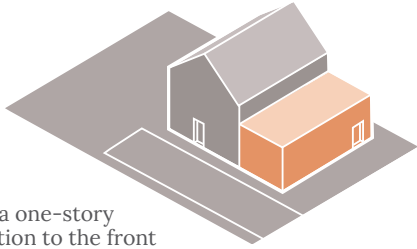
This owner wanted to create an ADU that was large enough to fit one of their family members and their household, but wanted to maintain the current size and condition of their backyard.



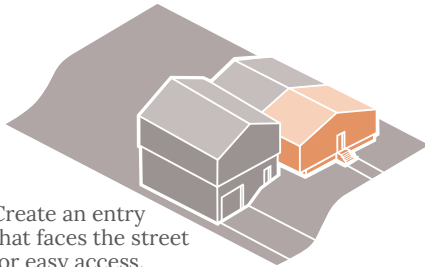
ENLARGED FIRST FLOOR PLAN: ADU

1/8" = 1'-0"

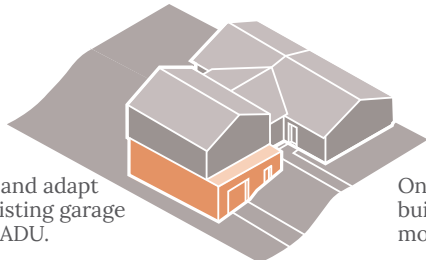
# MORE WAYS TO ATTACH AN ADU IN YOUR FRONT YARD



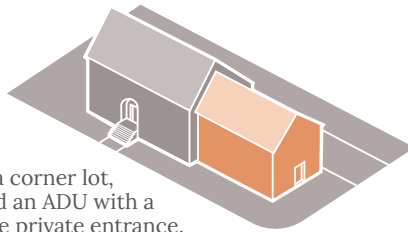
Add a one-story addition to the front of your home.



Create an entry that faces the street for easy access.



Extend and adapt your existing garage into an ADU.



On a corner lot, build an ADU with a more private entrance.

**Attaching an ADU to your front yard gives the new unit direct access to the street and sidewalk.** The entrance to the ADU could be positioned on the side of the ADU for added privacy or directly facing the street for easy access. Alternatively, the entrance could be tucked around a corner or recessed slightly, creating a more private entryway that still benefits from the convenience of street access.

As shown in the previous pages, the proximity to the street or to an existing driveway could make this a good approach if a homeowner has a large front yard and would like to add a fully accessible ADU. This arrangement could also be a great approach for multi-generational living.

This same approach is also possible in a side yard or rear yard. It is important to check zoning's yard requirements and understand the patterns of the yards in your area before you start this kind of project.

Homes built in the mid-twentieth century often feature large front yards and larger lots that offer possibilities for adding an ADU, as can be seen in this Allston home.



The oversized front yard in this house in Mattapan would be a great place to both add an ADU and more trees.



Enclosing an existing front porch, similar to this house in Roslindale, is also a way to add space to either the main unit or a new ADU.

