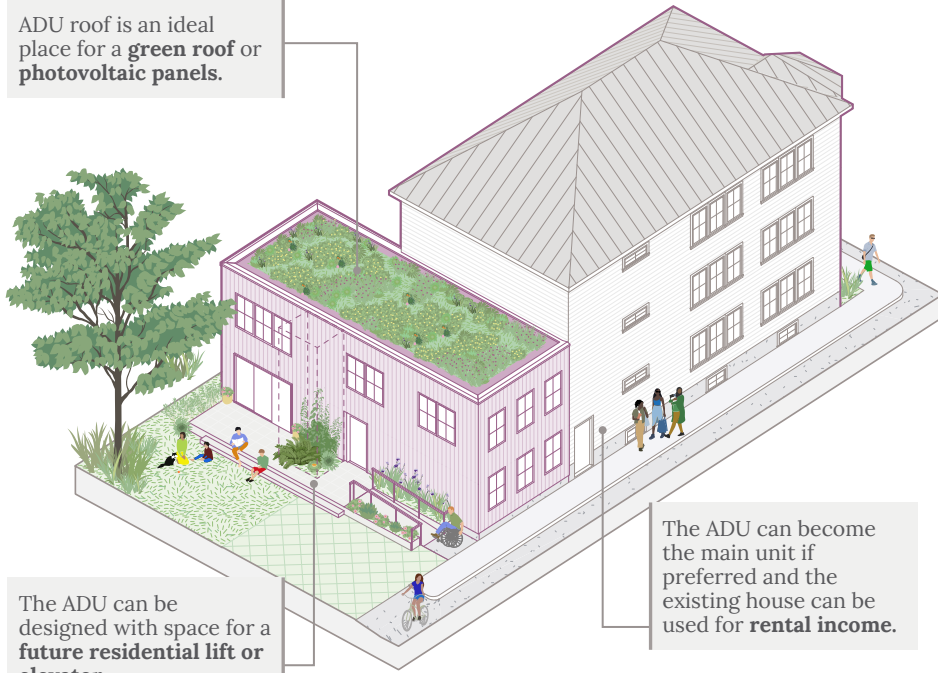


ATTACH AN ADU ON A CORNER LOT



Is your building on a corner lot? Consider attaching an ADU that can be easily accessed from one side of the lot.

ADU roof is an ideal place for a **green roof** or **photovoltaic panels**.

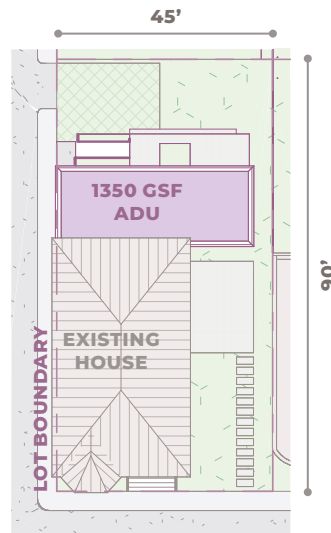


The ADU can be designed with space for a **future residential lift or elevator**.

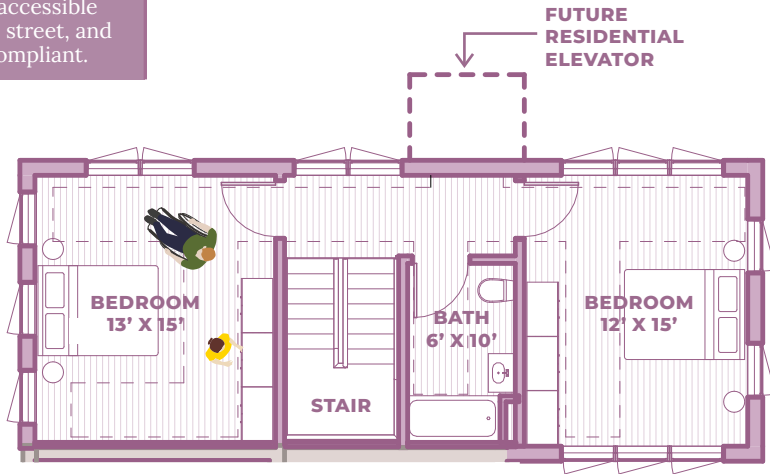
The ADU can become the main unit if preferred and the existing house can be used for **rental income**.

If you have a large backyard on a corner lot, an ADU can be attached to the back of your existing house. A corner lot makes it easier to provide direct access to the ADU from the sidewalk.

This version shows a two-story ADU that is designed so that it could easily convert to a fully accessible home. If you are planning to age in place in your ADU, planning bathrooms, kitchens and entrances that are sized for accessibility will make it much easier to convert your home. You may also want to plan for a future residential elevator and accessible circulation from existing driveways or from the sidewalk to your front door.



This owner would like to have an ADU that is easily accessible from the street, and is ADA compliant.



ENLARGED ADU SECOND FLOOR PLAN



ENLARGED ADU GROUND FLOOR PLAN

3/32" = 1'-0"

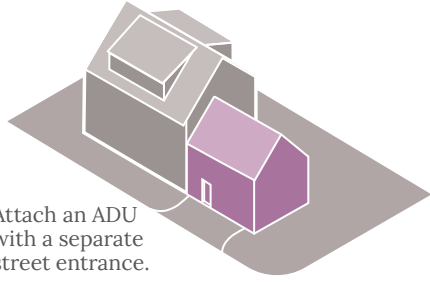


SECTION PERSPECTIVE

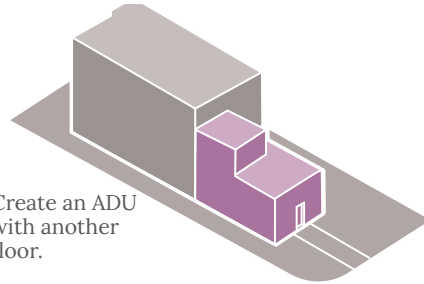
Space for a future residential elevator if needed.



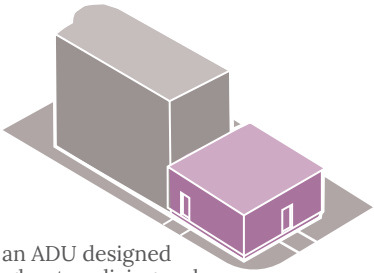
MORE WAYS TO ATTACH AN ADU ON A CORNER LOT



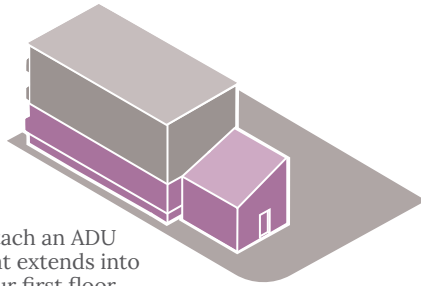
Attach an ADU with a separate street entrance.



Create an ADU with another floor.



Make an ADU designed for single-story living and easy street access.



Attach an ADU that extends into your first floor.

A corner lot generally offers more flexibility in terms of access to the ADU, including the placement of the door, driveway options, and even multiple entry points. For example, the door could be positioned on the side street for more privacy, or facing the main street for easier visibility and access. Additionally, a corner lot could allow for separate entrances for the main unit and the ADU, providing greater independence for occupants.

The design on the previous spreads illustrates how a residential elevator could be added to the two-story ADU to make it fully accessible. As an alternative, if space permits, the ADU could be designed as a single-story unit to eliminate stairs. The flexibility of a corner lot also allows for creative landscaping around the ADU, further enhancing the outdoor living space while maintaining accessibility.

An attached ADU was added to this Allston home on a corner lot to facilitate multigenerational living for a family, specifically independent living for an adult family member with a disability.



A home on a corner lot in Roslindale where a potential ADU could have a separate entrance on the cross street.



Example of a single-unit house in Cambridge with an attached ADU in the corner side yard.

