

"Children playing in West Canton Park" (1970) taken by Boston Redevelopment Authority  
Freedom House, Inc. Records, Northeastern University Archives and Special Collections



## Modifikasyon Tèks Zonaj pou sèvis gadri nan tout vil la

*Reyinyon Piblik – 08.28.2023*



**boston planning &  
development agency**

# Zoom Controls to Listen to Interpreters



**(EN)** Look for the interpretation icon (globe) at the bottom of your screen and select the language you want to hear.

**(Cabo Verdean)** Djobe íkune di interpretason (un globu) na parti inferior di tela y selesiona bu língua ki bu kre skuta reunion.

**(Kreyòl Ayisyen)** Chèche ikòn entèpretasyon ki gen fòm (glòb) anba ekran ou an epi seleksyone lang ou vle tande a.

**(Español)** Busque el ícono de la interpretación (globo) en el borde inferior de su pantalla y seleccione el idioma en el que desea escuchar.

**(Tiếng Việt)** Tìm biểu tượng phiên dịch (hình quả địa cầu) ở phía cuối màn hình của bạn và chọn ngôn ngữ bạn muốn nghe.

**(简体中文)** 查找屏幕底部的翻译图标（地球仪），然后选择您想听到的语言。

**(繁體中文)** 查找屏幕底部的翻譯圖標（地球儀），然後選擇您想听到的語言。

# Zoom Controls to View Translated Slides

**(EN)** Look for the “View options” button at the top of your screen and select “Share Screens,” then select the language of the slides that you want to view.

**(Caboverdean)** Prokura buton "View Options" (Djobe Opon) na parti di sima di tela y skodje “Share Screens” (Partilha Tela), dipos skodje idioma ki bu ta gostaba di djobe aprezentason.

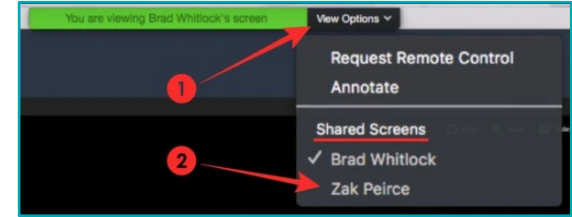
**(Kreyòl Ayisyen)** Chèche bouton "View options" ki anlè ekran ou a epi chwazi "Share Screens", epi chwazi lang ou vle wè nan diapositives yo.

**(Español)** Busque el botón "Ver opciones" en la parte superior de la pantalla y seleccione "Compartir pantallas", luego seleccione el idioma de las diapositivas que desea ver.

**(Tiếng Việt)** Tìm nút “Tùy chọn xem” ở đầu màn hình của bạn và chọn “Chia sẻ màn hình”, sau đó chọn ngôn ngữ của các trang chiếu mà bạn muốn xem.

**(简体中文)** 查找屏幕顶部的“查看选项”按钮并选择“共享屏幕”。然后选择要查看的幻灯片的语言。

**(繁體中文)** 查找屏幕頂部的“查看選項”按鈕並選擇“共享屏幕”。然後選擇要查看的幻燈片的語言。

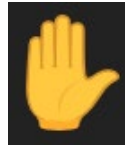


# Zoom Meeting Info + Tips

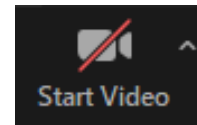
- **The BPDA will be recording this meeting** and posting it on the BPDA's project webpage. If you do not wish to be recorded during the meeting, please turn off your microphone and camera.
- **Zoom controls are available at the bottom of your screen.** Clicking on these symbols activates different features.
- **Use raise hand function** (dial 9 followed by 6 if joining by phone) **and wait to be called upon** before asking your question or providing comment.



Mute/unmute



Raise hand to get in line to ask a question or provide comment



Turn video on/off



Introduction +  
Background

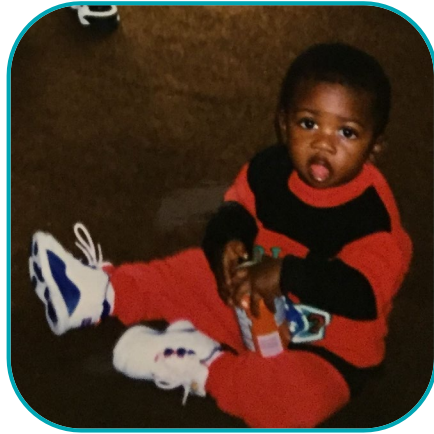
Presentation from  
the Office of Early  
Childhood on Child  
Care Supply +  
Demand

Presentation from  
the BPDA on the  
Zoning Text  
Amendment

Questions +  
Comments

## Agenda





## Abdul-Razak Zachariah

*Planifikatè I, Ekip Refòm Zonaj*

[abdul-razak.zachariah@boston.gov](mailto:abdul-razak.zachariah@boston.gov)

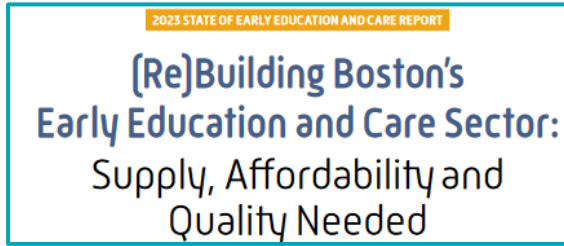


**boston planning &  
development agency**

# Enfòmasyon sou Efò Swen Timoun nan tout vil Boston



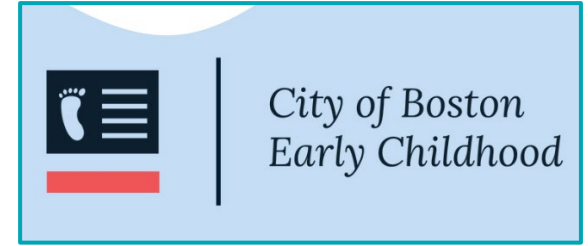
# Règleman & Rechèch Resan yo



Rapò sou Pwogram Opòtinite Boston



Dekrè Egzekitif Majistra Wu a - Enklizyon  
Egzijans ki gen rapò avèk Etablisman Gadri  
yo



Biwo Majistra pou Edikasyon Bonè



# BIWO MAJISTRA POU EDIKASYON BONÈ



# BIWO POU EDIKASYON BONÈ



**Kristin McSwain**

*Direktè ak Konseye  
Prensipal, Biwo  
Edikasyon Bonè*



**Paula Gaviria**

*Direktè Pwogram  
Swen Timoun, Biwo  
Edikasyon Bonè*



**Farah Elhadidy**

*Manadjè Operasyon,  
Biwo Edikasyon Bonè*



**Peninna Delinois-  
Zephir**

*Manadjè Lojman Swen  
Timoun, Biwo Edikasyon  
Bonè*



Nan 2020, Boston te gen apeprè 39,992 timoun  
ki gen laj 0-5 ane



53% ladan yo (21,222) te gen laj 0-2 ane



Nan Jen 2022, Boston te gen apeprè 747 founisè gadri



Kapasite estime: 24,276 edikasyon bonè fòmèl & plas pou gadri timoun laj 0 a 5 ane



Sèlman **21%** nan plas disponib yo se pou timoun laj 0 a 2 ane

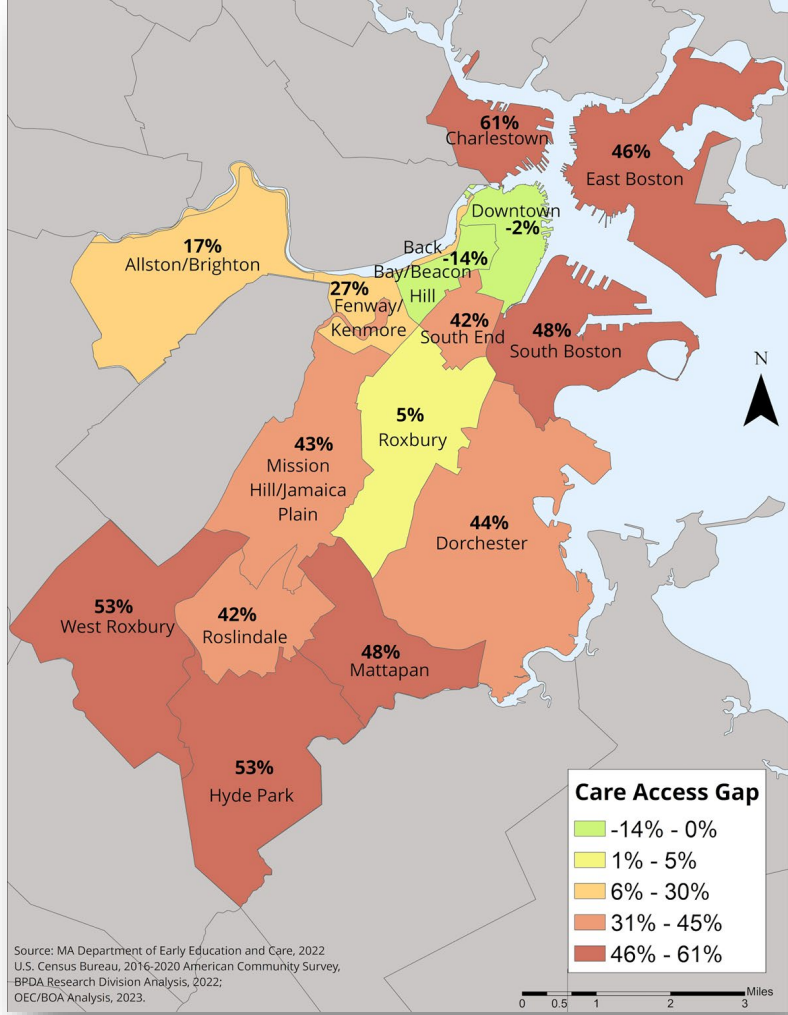


# Diferans nan Aksè

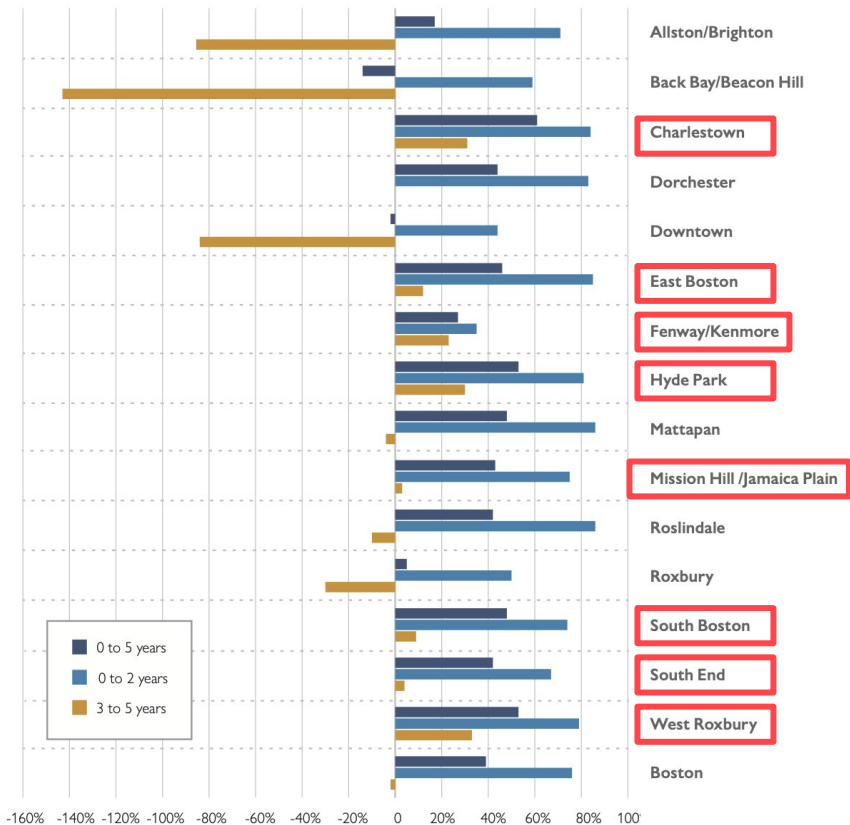
OFFICE OF EARLY CHILDHOOD



*Diferans Aksè nan Edikasyon Bonè pou Timoun yo ki gen Laj 0 a 5 ane nan Boston, pa katye (2022)*

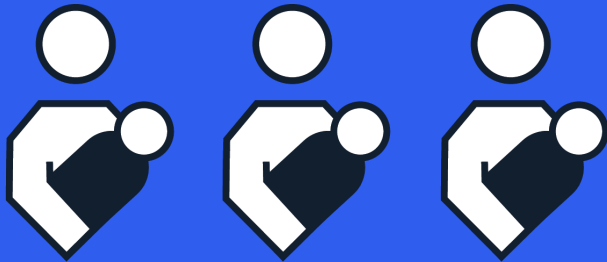


Access Gap by Age Group and Neighborhood (Boston, 2022)



- Boston te gen mwayèn 39% diferans aksè pou timoun laj 0 a 5 ane
- Diferans nan tout vil la lakoz pa yon mank plas pou tibebe ak timoun piti
- Si tout timoun yo laj 0 a 2 te bezwen enskri nan yon anviwonman fòmèl, 76% pa tap gen yon plas
- Pou timoun preskolè yo, te genyen 19,115 plas pou sèvis 18,770 timoun.
- Sipli 2% plas lekòl matènèl sa a kache diferans ki genyen nan 8 katye

*Se sèlman 1 ti bebe nan 4 tibebe ak timoun piti ta  
jwenn yon plas nan yon anviwònman gadri fòmèl*





A night-time photograph of a city street, likely in Boston, featuring festive lights on trees and buildings, and a church steeple in the background. The scene is dimly lit with warm streetlights and cool blue tones from the night sky and building lights.

# Depatman Edikasyon Bonè ak Swen Massachusetts (EEC)

OFFICE OF EARLY CHILDHOOD



# ENFÒMASYON SOU EEC



- EEC fè pati nan Biwo Egzekitif Edikasyon an
- Depatman an gen yon biwo santral ak senk biwo rejyonal
- Komisyon Konsèy Edikasyon ak Swen Bonè fikse règleman ak regilasyon ki gen rapò ak pwogram ak sèvis edikasyon ak swen bonè nan Commonwealth nan Massachusetts.
- EEC asire sekirite ak bon jan kalite nan edikasyon ak swen bonè sa yo:
  - *Swen fanmi ak sant pou timoun*
  - *Lekòl matènèl*
  - *Sipò pou fanmi*
  - *Rezidansyèl (egzanp kay gwoup, lekòl rezidansyèl) ak*
  - *Plasman (egzanp. Swen adoptif ak adopsyon)*

- **Lisans ak sipèvizyon** pou apeprè 8,700 òganizasyon piblik ak prive.
  - *Chak nan antite sa yo bezwen vizit anyèl pou lisans, siveyans ak sipò kontinyèl, ak asistans teknik Depatman an bay.*
- **Fòmasyon ak sipò pou amelyore kalite** edikasyon ak swen yo bay.
  - *Sa gen ladann yon sistèm evalyasyon kalite kote 5,000 pwogram edikasyon ak swen bonè patisipe, ansanm ak lòt kalite fòmasyon kontinyèl, sipò, ak resous adisyonèl.*
- **Sipò a plizyè milye edikatè bonè** nan òganizasyon piblik ak prive.
  - *Sa fèt atravè egzijans ak aktivite devlopman pwofesyonèl, estanda kalifikasyon ak konpetans, verifikasyon sou dosye enfòmasyon kriminèl, ak bousdetid pou sipòte obstansyon yon diplòm.*

# LISANS AK APWOBASYON

606 CMR 7.00

EEC te devlope règleman espesifik yo dwe respekte tout founisè swen bonè ak sèvis edikasyon nan Commonwealth, kit se lakay (FCC), lekòl oswa ki baze nan sant (CBO).

Depatman an ka bay yon lisans pou gadri timoun akondisyon ke :

- *nan opinyon EEC, sèvis yo ofri nan pwogram lan adekwat pou pwoteje sante ak sekirite timoun yo;*
- *aplikan an soumèt yon aplikasyon ranpli sou yon fòm EEC bay, frè aplikasyon lisans ki nesèsè ak dokiman yo mande yo;*
- *konplete yon antesedan sou istwa kriminel pou tout anplwaye yo (CORI ak SORI)*
- *konfòme ak kondisyon espas andedan kay la ak deyò, kòd bilding, kòd dife, ak kòd zonaj*
- Pou CBO yo yon lisans regilye oswa apwobasyon valab pou dezan ak pou FCC yo
- **Twazan** apati dat emisyon an sof si yo revoke, sispann, oswa fè pwobasyon.



# Enpak sou Chanjman ki Pwopoze yo

OFFICE OF EARLY CHILDHOOD



# IMPACT OF THE PROPOSED CHANGES ON FAMILIES

*Yon vil ki pi akeyan pou fanmi*

## Ogmante aksesibilite ak kalite

Gen plis founisè gadri nan vil la ogmante kantite plas ki disponib pou timoun 0 a 5 ane, men tou kantite founisè ki gen lisans kalite siperyè.

## Diminye tan datant

Plis opsyon gadri nan tout katye yo bay moun kap bay swen yo opòtinite pou yo chwazi gadri toupre lakay yo oswa travay, sa ki diminye tan ki pase ap vwayaje.


## Ogmante patisipasyon nan mache travay

Lè w gen plis opsyon gadri ki gen lisans, ki an sekirite ak bon jan kalite reponn a bezwen paran k ap travay, espesyalman manman yo, opòtinite pou yo kontinye travay

## Diminye depan pou swen timoun

Ogmantasyon baryè zonal yo ajoute nan pri swen an, lè li rann li pi difisil pou jwenn espas (rezidansyèl & non-rezidansyèl) ki otorize gadri ki gen lisans yo. Mwens opsyon ka mennen nan pri ki pi elve pou rezidan katye yo.

# IMPACT OF THE PROPOSED CHANGES ON DEVELOPERS AND PROVIDERS



Ogmante espas a bon mache pou gadri

Devlopè yo gen plis ankourajman pou bay espas pou gadri nan tout kalite pwojè, rezidansyèl, biwo, itilizasyon melanje, ak komèsyal, ki gen ladan nouvo konstriksyon ak re-itylizasyon.

**Diminye gadri ki pa reglemante**

Founisè ki egziste deja ki pa gen lisans ka vin gen lisans epi konfòme yo avèk kòd la lè yo retire obstak ki kreye pa kòd zònaj aktyèl la.




**Ogmante opòtinite ekonomik**

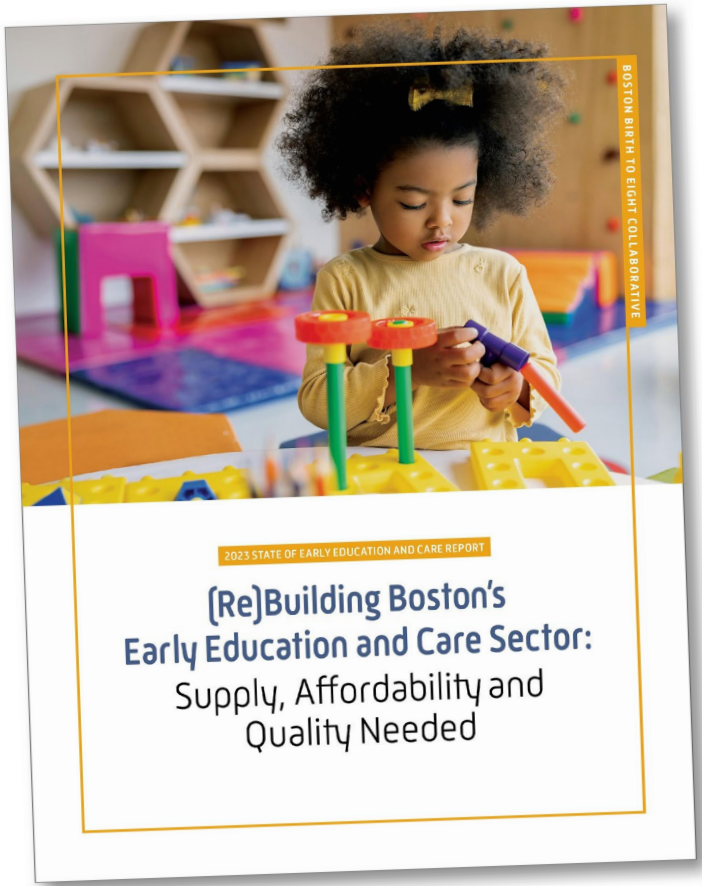
Louvri yon gadri ki gen lisans nan katye kote aksè a difisil ka atire envestisman nan toulède devlopè ak founisè gadri yo.

Diminye chaj sou founisè ak devlopè yo

Pwosedi pou lokalize etablisman gadri nan kote ki apwopriye ak an sekirite pou timoun yo, pa ta dwe twò lou epi yo ta dwe gen rapò ak gwosè ak enpak sou itilizasyon teren etablisman an.



# ESKANE POU LI RAPÒ A



*Mèsi!*



"Children playing in West Canton Park" (1970) taken by Boston Redevelopment Authority  
Freedom House, Inc. Records, Northeastern University Archives and Special Collections



# Modifikasyon Tèks Zonaj pou sèvis gadri nan tout vil la

*Reyinyon Piblik – 08.28.2023*



**boston planning &  
development agency**

# Kisa yon modifikasyon tèks zonaj ye?

*Ak kijan li ede nan rezoud pwoblèm sa yo?*



# Modifikasyon Tèks Zonaj

*Yon chanjman oswa yon seri chanjman nan pati Kòd Zonifikasyon an ki vin tounen yon nouvo seri règleman pou itilizasyon tè ak devlopman nan Vil la depi yo apwouve yo.*

**Cultural Uses.** Art gallery; art use; auditorium; cinema; concert hall; museum; public art display space; studio, arts; studio, production; theatre; or ticket sales.

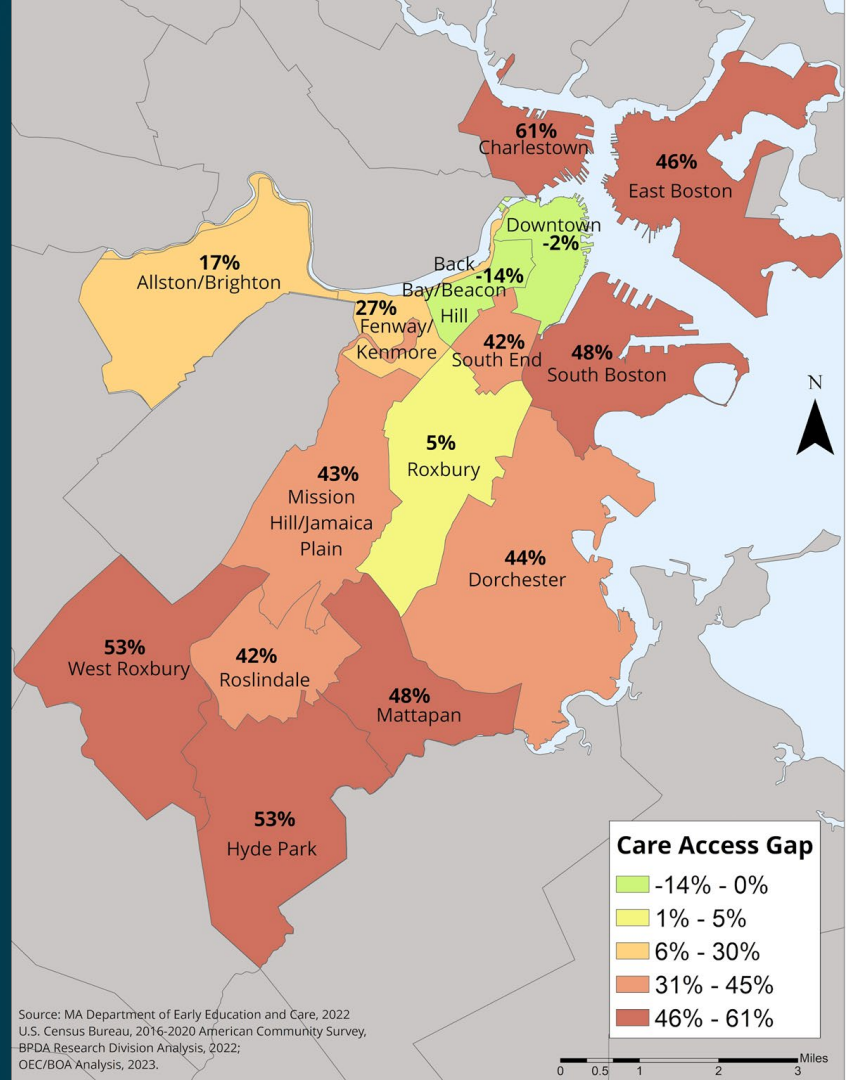
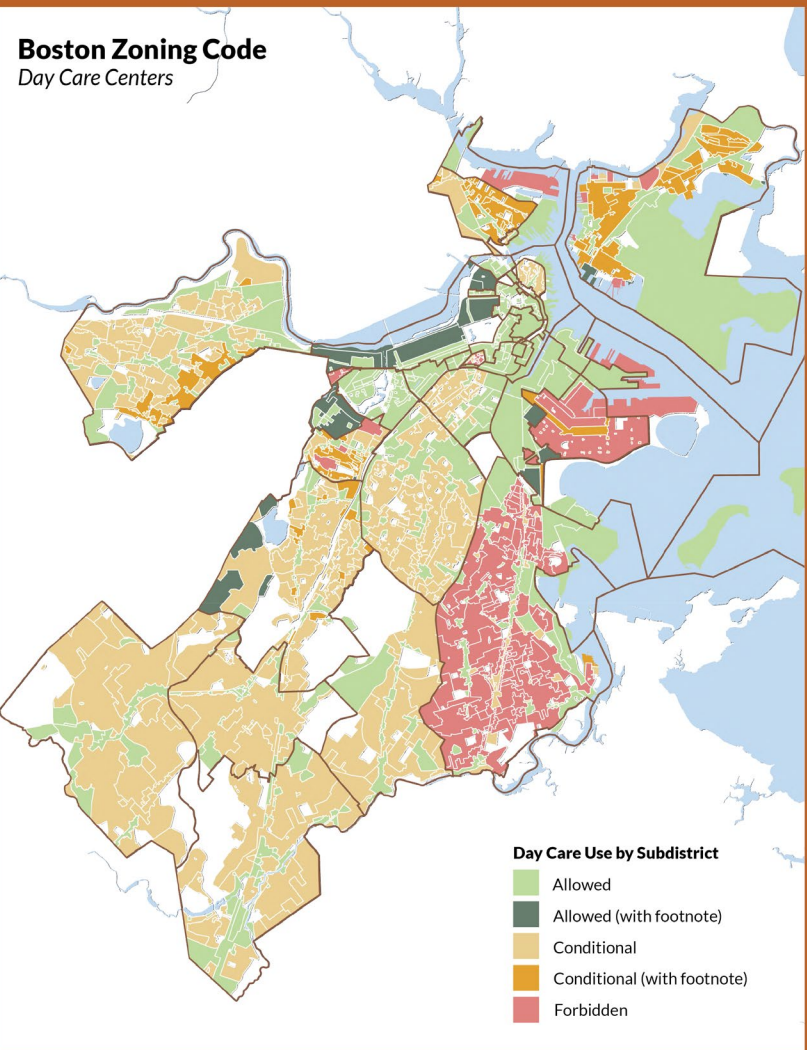
**Custodial Care Facility.** A facility which provides custodial care, supervision and/or guardianship for people experiencing substance use disorder, or with cognitive disabilities, or with mental health disabilities.

**Day Care Center.** Any facility operated on a regular basis whether known as a day nursery, nursery school, child play school, progressive school, child development center, or preschool, or known under any other name, which receives children not of common parentage under seven years of age, or children under sixteen years of age if such children are children with special needs as defined in Massachusetts General Laws, Chapter 28A, Section 9, for nonresidential custody and care during part or all of the day separate from their parents. Day care center shall not include: any part of a public school system; any part of a private, organized educational system, unless the services of such system are primarily limited to nursery or related preschool services; a Sunday school conducted by a religious institution; a facility operated by a religious organization where children are cared for during short periods of time while persons responsible for such children are attending religious services; a Family Day Care Home; an informal cooperative arrangement among neighbors or relatives; or the occasional care of children with or without compensation therefor.

	One-Family (1F)	Two-Family (2F)	Three-Family (3F)	Multifamily Residential (MFR)
Adult education center	F	F	F	F
Community center	C	C	C	C
Day care center	C	C	C	C
Day care center, elderly	C	C	C	C
Library	A	A	A	A
Place of worship; monastery; convent; parish house	A	A	A	A

# Boston Zoning Code

## Day Care Centers



Source: MA Department of Early Education and Care, 2022  
 U.S. Census Bureau, 2016-2020 American Community Survey,  
 BPDA Research Division Analysis, 2022;  
 OEC/BOA Analysis, 2023.



# Modifikasyon Tèks Zonaj pou Swen Timoun

*Ki chanjman ki te fèt?*



# KAT Chanjman Enpòtan pou Sipòte Swen Timoun nan Tout Vil la

Chanje "Swen TIMOUN" an "Gadri "

Swen Timoun nan CHAK Katye

Swen Timoun odela Sousòl

Retire Pakin Minimòm





Department of Early  
Education and Care (EEC)



**Chanje "Sven TIMOUN "**  
**an "Gadri "**

- “Sant swen timoun” vin **“sant gadri”**
- **“Kay gadri akseswa”** vin **“mezon gadri akseswa”**
- Depatman Edikasyon ak Swen Bonè nan Massachusetts (EEC) **yo nonmen kòm ajans leta ki kontwole gadri a**
- Yo retire langaj ki bay konfizyon osijè sa yon sant gadri ye **“pa” siprime**

In the definition of the use item “Community Uses,” **delete** “day care center” and **replace** it with “child care center.”

**Delete** the use item and definition for “Day Care Center.”

**Day Care Center.** Any facility operated on a regular basis whether known as a day nursery, nursery school, child play school, progressive school, child development center, or preschool, or known under any other name, which receives children not of common parentage under seven years of age, or children under sixteen years of age if such children are children with special needs as defined in Massachusetts General Laws, Chapter 28A, Section 9, for nonresidential custody and care during part or all of the day separate from their parents. Day care center shall not include: any part of a public school system; any part of a private, organized educational system, unless the services of such system are primarily limited to nursery or related preschool services; a Sunday school conducted by a religious institution; a facility operated by a religious organization where children are cared for during short periods of time while persons responsible for such children are attending religious services; a Family Day Care Home; an informal cooperative arrangement among neighbors or relatives; or the occasional care of children with or without compensation therefor.

**Insert** the following new use item and definition for “Child Care Center” in the appropriate position alphabetically:

**Child Care Center.** Any facility operated on a regular basis, whether known as a child nursery, nursery school, kindergarten, child play school, progressive school, child development center, or preschool, or known under any other name, which receives children not of common parentage under seven (7) years of age, or under sixteen (16) years of age if those children have special needs as defined in Massachusetts General Laws, for nonresidential custody and care during part or all of the day separate from their parents. Any facility of this type shall comply with the standards, inspectional requirements, and dimensional regulations as established by the Massachusetts Department of Early Education and Care (or a successor agency responsible for the state licensing of home-based child care facilities).

**Delete** the use item and definition for “Family Day Care Home.”

**Family Day Care Home.** Any dwelling unit which on a regular basis receives, for temporary custody and care during part or all of the day, children under seven years of age, or children under sixteen years of age if such children are children with special needs as defined in Massachusetts General Laws, Chapter 28A, Section 9; provided, however, in either case, that:

- (1) The unit is licensed by the Massachusetts Office of Child Care Services (or a successor agency responsible for the state licensing of home-based child care facilities) for the number of participating children; and
- (2) The total number of children under sixteen in a family day care home shall not exceed ten, including participating children living in the dwelling unit. Family day care home shall not mean a dwelling unit used for an informal cooperative arrangement among neighbors or relatives, or the occasional care of children with or without compensation therefor.

**Insert** the following new use item and definition for “Family Child Care Home” in the appropriate position alphabetically.

**Family Child Care Home.** Any dwelling unit which, on a regular basis, receives for temporary custody and care during part or all of the day, children under seven (7) years of age, or children under sixteen (16) years of age if those children have special needs, and receives for temporary custody and care for a limited number of hours children of school age under regulations adopted by the Board of Early Education and Care as defined in Massachusetts General Laws; provided, however, in either case that:

- (1) The unit is licensed by the Massachusetts Department of Early Education and Care (or a successor agency responsible for the state licensing of home-based child care facilities) for the number of participating children per the agency’s standards, inspectional requirements, and dimensional regulations, and
- (2) The total number of children under sixteen (16) in a family child care home shall not exceed ten (10), including participating children living in the dwelling unit.





*Auntie Madge & Papa Childcare Services, Mattapan*



*Ms. Luz's NeighborSchool, East Boston*



*Our Future Learning Center, Allston-Brighton*

**Gadri timoun nan  
CHAK Katye**





*Genelys Family Child Care, Jamaica Plain*

**Gadri odela Sousòl la**

- Etablisman gadri **yo otorize nan sousòl tout sou-distri katye yo**– aliyen avèk pèmisyon eta
- Restriksyon eksesif sou pyekare etablisman gadri nan kèk katye **anile**

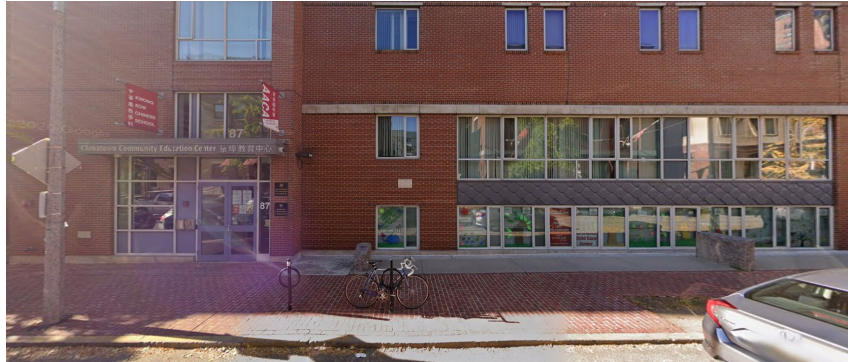
In each use table of Articles 50 through 73, under the subcategory heading “Community Uses,” in the row for the use item “Child care center,” **delete** all instances of the designations “C” and “F” and the numerical citations next to those letters, and **replace** them with the designation of “A.”

In each use table of Articles 50 through 73, under the subcategory heading “Accessory and Ancillary Uses,” in the row for the use item “Accessory family child care home,”

- Delete** all instances of the designations “C” and “F” and the numerical citations next to those letters, and **replace** them with the designation of “A.”

	One Family (1F)	Two Family (2F)	Three Family (3F)	Conservation Multifamily Residential (MFR)	Community Protection Subdistricts (CPS)	Facilities Subdistricts (CF)
Child care center	€A	€A	€A	€A <sup>(2)</sup>	A	€A

**(2) Where designated “A” or “C,” provided that such use is located on the ground floor, or in a basement with a separate entrance; otherwise forbidden.**



*Buds & Blossoms Child Care & Early Education Center,  
Chinatown*

Sant Gadri yo ka bati  
pakin yo bezwen an-  
men kòd zòn lan pa  
p egzije plis ke sa

- Kòd la kounye a **gen yon kantite minimòm espas pakin** ke sant gadri yo oblije bati
- Chanjman sa a pral **retire kondisyon minimòm pakin sa a**
- Sant gadri yo ka toujou bati espas pakin si sa nesesè, men **yo pa oblije bati pakin ankò si yo pa bezwen yo.**

In each table related to off-street parking regulations, **delete** “day care center” as a use item from the table.

Off-Street Parking Requirements

	Spaces Per 1,000 Square Feet of Gross Floor Area <sup>(2)</sup>
<del>Day Care Center</del>	0.7

# Enpak sou Chanjman ki Pwopoze yo sou Itilizasyon & Devlopman

**Chanje "Gadri" an " Swen TIMOUN "** = *Aliyman ak tèm ak definisyon eta a*

**Gadri nan CHAK Katye** = *Etablisman gadri yo otorize kòm yon itilizasyon tè nan tout vil la*

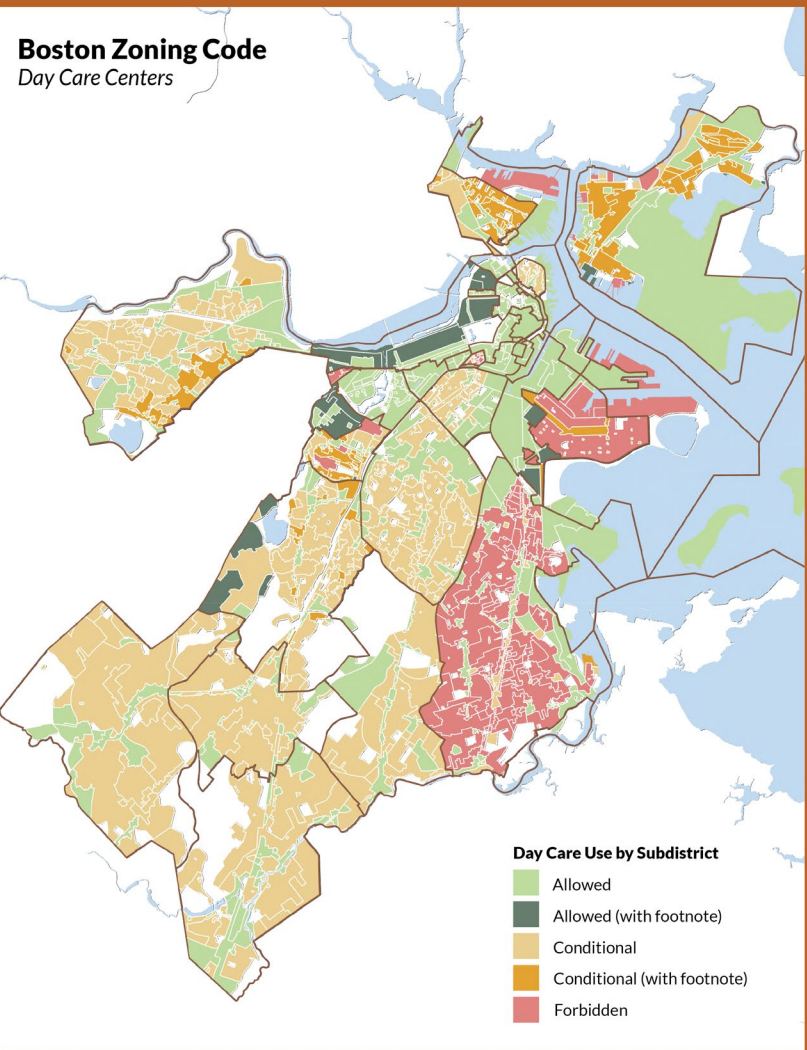
**Gadri odela Sousòl la** = *Retire obstak yo kote timoun lan kapab nan yon bilding*

**Retire Minimòm Pakin** = *Ede sant gadri yo bati pakin sèlman si yo bezwen l*



# Boston Zoning Code

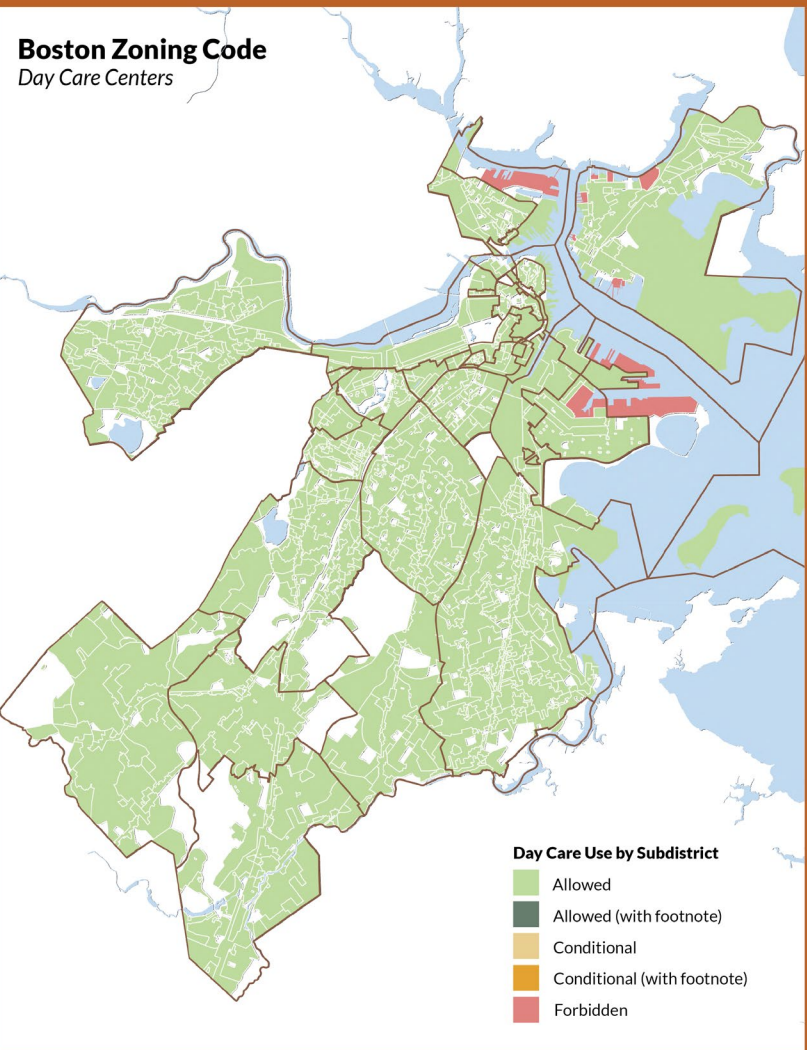
Day Care Centers



Sa nou genyen  
jodia ...



**Boston Zoning Code**  
Day Care Centers



Sa nou rann posibil pou pi jèn rezidan nou yo demen ...

# ENPAK SOU CHANJMAN YO KI PWOPOZE NAN FANMI YO



## *Yon vil ki pi familyal*

### Ogmante aksè ak bon jan kalite

Gen plis founisè gadri nan vil la ogmante kantite plas ki disponib pou timoun 0 a 5 ane, siperyè.

men tou kantite founisè ki gen lisans kalite

### Diminye tan vwayaj

Plis opsyon gadri nan tout katye yo bay moun kap bay swen yo opòtinite pou yo chwazi gadri toupre lakay yo oswa travay, sa ki diminye tan ki pase ap vwayaje.


### Ogmante patisipasyon nan mache travay

Lè w gen plis opsyon gadri ki gen lisans, ki an sekirite ak bon jan kalite reponn a bezwen paran k ap travay, espesyalman manman yo, opòtinite pou yo kontinye travay.

### Diminye depans pou swen timoun

Ogmantasyon baryè zonaj yo ajoute nan pri swen an, lè li rann li pi difisil pou jwenn espas (rezidansyèl & non-rezidansyèl) ki otorize gadri ki gen lisans yo. Mwens opsyon ka mennen nan pri ki pi elve pou rezidan katye yo.

# ENPAK SOU CHANJMAN KI PWOPOZE SOU DEVLOPÈ AK FOUNISÈ YO



## Ogmante espas a bon mache pou gadri

Devlopè yo gen plis ankourajman pou bay espas pou gadri nan tout kalite pwojè, rezidansyèl, biwo, itilizasyon melanje, ak komèsyal, ki gen ladan nouvo konstriksyon ak retilizasyon.

## Diminye gadri ki pa reglemante

Founisè ki egziste deja ki pa gen lisans ka vin gen lisans epi konfòme yo avèk kòd la lè yo retire obstak ki kreye pa kòd zònaj aktyèl la.




## Ogmante opòtinite ekonomik

Louvri yon gadri ki gen lisans nan katye kote aksè a difisil ka atire investisman nan toulède devlopè ak founisè gadri yo.

## Diminye chaj sou founisè ak devlopè yo

Pwosedi pou lokalize etablisman gadri nan kote ki apwopriye ak an sekirite pou timoun yo, pa ta dwe twò lou epi yo ta dwe gen rapò ak gwosè ak enpak sou itilizasyon teren etablisman an.



# Elaji fleksibilite nan etablisman gadri pou timoun nan tout vil la

*Sa yo se espas gadri nan katye w la - ak kèk nan sa ki pral posib si  
modifikasyon sa a apwouve!*





# Mèsi! Ou gen Kesyon?

---

*Pou w jwenn plis enfòmasyon sou inisyativ zonaj sa a  
vizite : [bit.ly/BPDACHildCareZoning](https://bit.ly/BPDACHildCareZoning)*

*Pou pataje kòmantè piblik yo soti kounye a pou rive jiska **6 Septanm 2023**,  
vizite: [bit.ly/ChildCareFeedbackSurvey](https://bit.ly/ChildCareFeedbackSurvey)*

**Public Comment  
Period**

08.28.2023 to  
09.06.2023

**BPDA Board  
Meeting**

09.14.2023

**Zoning  
Commission  
Meeting**

10.11.2023

## Next Steps

