

"Children playing in West Canton Park" (1970) taken by Boston Redevelopment Authority  
Freedom House, Inc. Records, Northeastern University Archives and Special Collections



## Alterason di Testu di Zoniaméntu di Struturas pa Kuidadus Infantil na Sidadi Interu

*Riunion Públiku – 28.08.2023*



**boston planning &  
development agency**

# Zoom Controls to Listen to Interpreters



**(EN)** Look for the interpretation icon (globe) at the bottom of your screen and select the language you want to hear.

**(Cabo Verdean)** Djobe íkune di interpretason (un globu) na parti inferior di tela y selesiona bu língua ki bu kre skuta reunion.

**(Kreyòl Ayisyen)** Chèche ikòn entèpretasyon ki gen fòm (glòb) anba ekran ou an epi seleksyone lang ou vle tande a.

**(Español)** Busque el ícono de la interpretación (globo) en el borde inferior de su pantalla y seleccione el idioma en el que desea escuchar.

**(Tiếng Việt)** Tìm biểu tượng phiên dịch (hình quả địa cầu) ở phía cuối màn hình của bạn và chọn ngôn ngữ bạn muốn nghe.

**(简体中文)** 查找屏幕底部的翻译图标（地球仪），然后选择您想听到的语言。

**(繁體中文)** 查找屏幕底部的翻譯圖標（地球儀），然後選擇您想听到的語言。

# Zoom Controls to View Translated Slides

**(EN)** Look for the “View options” button at the top of your screen and select “Share Screens,” then select the language of the slides that you want to view.

**(Caboverdean)** Prokura buton "View Options" (Djobe Opon) na parti di sima di tela y skodje “Share Screens” (Partilha Tela), dipos skodje idioma ki bu ta gostaba di djobe aprezentason.

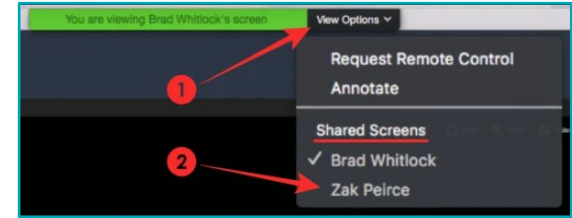
**(Kreyòl Ayisyen)** Chèche bouton "View options" ki anlè ekran ou a epi chwazi "Share Screens", epi chwazi lang ou vle wè nan diapositives yo.

**(Español)** Busque el botón "Ver opciones" en la parte superior de la pantalla y seleccione "Compartir pantallas", luego seleccione el idioma de las diapositivas que desea ver.

**(Tiếng Việt)** Tìm nút “Tùy chọn xem” ở đầu màn hình của bạn và chọn “Chia sẻ màn hình”, sau đó chọn ngôn ngữ của các trang chiếu mà bạn muốn xem.

**(简体中文)** 查找屏幕顶部的“查看选项”按钮并选择“共享屏幕”，然后选择要查看的幻灯片的语言。

**(繁體中文)** 查找屏幕頂部的“查看選項”按鈕並選擇“共享屏幕”，然後選擇要查看的幻燈片的語言。

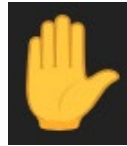


# Zoom Meeting Info + Tips

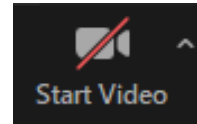
- **The BPDA will be recording this meeting** and posting it on the BPDA's project webpage. If you do not wish to be recorded during the meeting, please turn off your microphone and camera.
- **Zoom controls are available at the bottom of your screen.** Clicking on these symbols activates different features.
- **Use raise hand function** (dial 9 followed by 6 if joining by phone) **and wait to be called upon** before asking your question or providing comment.



Mute/unmute



Raise hand to get in line to ask a question or provide comment



Turn video on/off

Introduction +  
Background

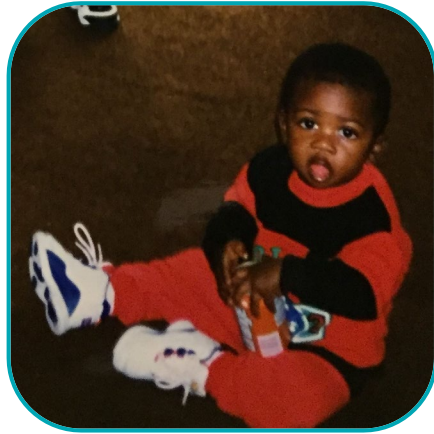
Presentation from  
the Office of Early  
Childhood on Child  
Care Supply +  
Demand

Presentation from  
the BPDA on the  
Zoning Text  
Amendment

Questions +  
Comments

## Agenda





## Abdul-Razak Zachariah

*Planiador I, Ekipa di Rifórma di  
Zoniaméntu*

[abdul-razak.zachariah@boston.gov](mailto:abdul-razak.zachariah@boston.gov)



**boston planning &  
development agency**

# Kontestu sobri Sforsus Munisipal rilasionadu ku Kuidadus Infantil na Boston



**boston planning &  
development agency**

# Piskiza & Pulítikas Risenti

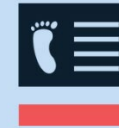
2023 STATE OF EARLY EDUCATION AND CARE REPORT

## (Re)Building Boston's Early Education and Care Sector: Supply, Affordability and Quality Needed

Rilatóriu di Boston Opportunity Agenda



Dispaxu Izekutivu di Prizidenti di Kámara  
Wu – Izjénsia di Inkluzon di Strukturas di  
Kuidadus Infantil



City of Boston  
Early Childhood

Gabineti di Priméru Infánsia di Kámara  
Munisipal



**boston planning &  
development agency**



# GABINETI DI PRIMÉRU INFÁNSIA DI KÁMARA MUNISIPAL



# GABINETI DI PRIMÉRU INFÁNSIA



**Kristin McSwain**

*Diretora & Konsultora  
Superior, Gabinetu di  
Priméru Infánsia*



**Paula Gaviria**

*Diretora di Prugrama  
di Kuidadus Infantil,  
Gabinetu di Priméru  
Infánsia*



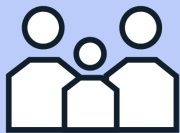
**Farah Elhadidy**

*Diretora di  
Operasons, Gabinetu  
di Priméru Infánsia*



**Peninna Delinois-  
Zephir**

*Jestora di Abitason pa  
Kuidadus Infantil, Gabinetu  
di Priméru Infánsia*



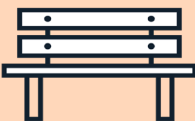
Na 2020, Boston tinha serka di 39.992 kriansa di 0-5 anu di idadi



53% d'es (21.222) tinha entri 0-2 anu di idadi



Na junhu di 2022, Boston tinha serka di 747 prestador di kuidadus infantil



Kapasidadi stimadu: 24.276 lugar formal di idukason & kuidadus infantil pa kriansas di 0 a 5 anu di idadi



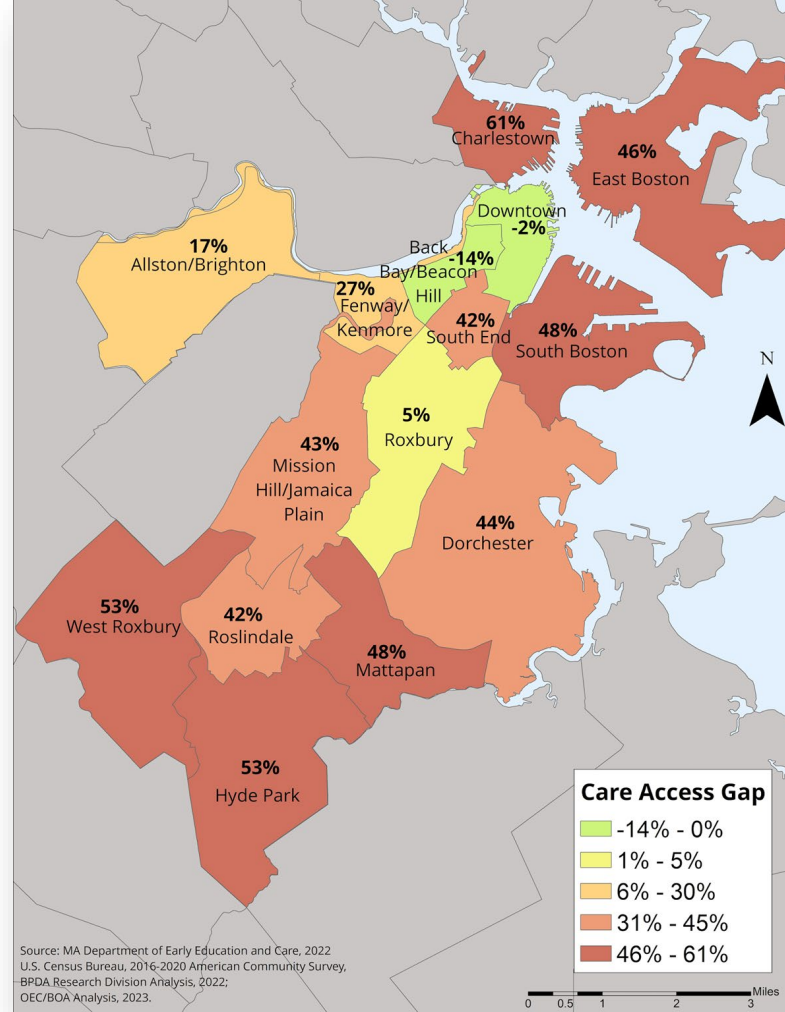
Sô **21%** di lugaris disponível é pa kriansas di 0 a 2 anu di idadi

# Défisi di Asésu

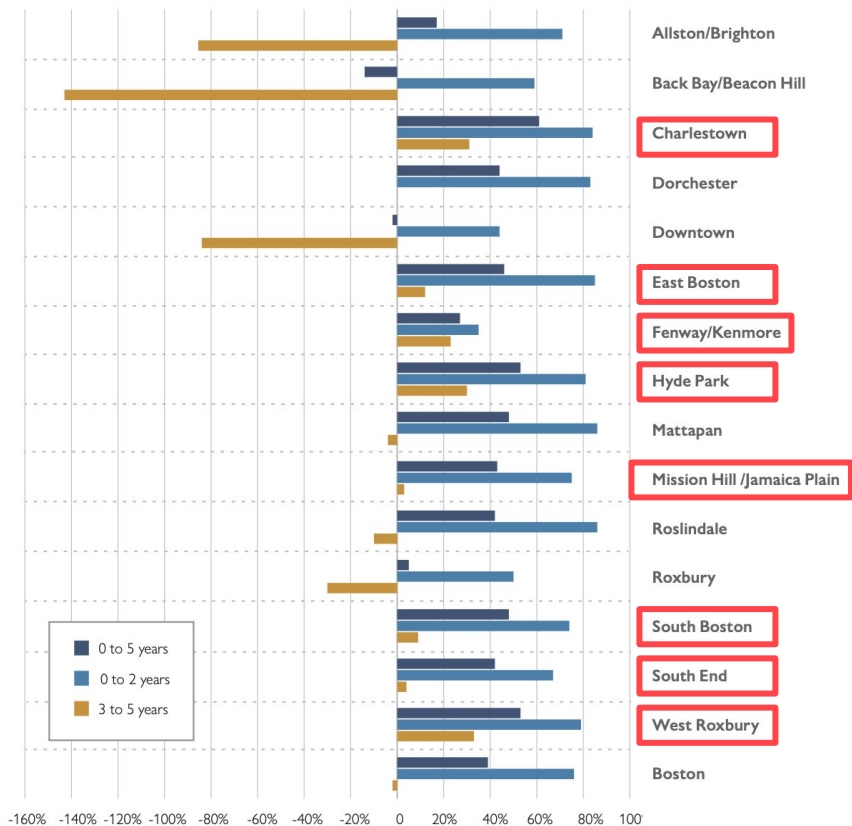
GABINETI DI PRIMÉRU  
INFÁNSIA



*Défisi di Asésu a Idukason  
y Kuidadus Infantil pa  
Kriansas di 0 a 5 anu di  
idadi na Boston, pur zóna  
(2022)*

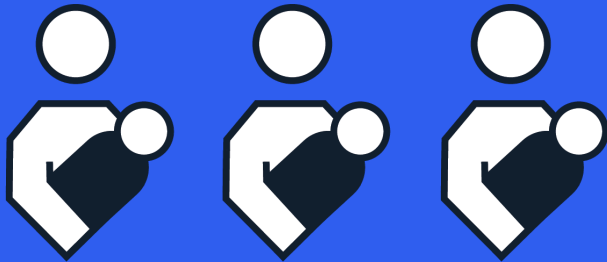


Access Gap by Age Group and Neighborhood (Boston, 2022)



- Boston tinha un **défisi médiu di asésu di 39%** pa kriansas di 0 a 5 anu di idadi
- Défisi na sidadi interu é kausadu pa falta di lugar pa bebês y kriansas pikinóti
- Si tudu kriansa di 0 a 2 anu di idadi prisizaba di ser matrikuladu nun ambienti formal, 76% d'es ka ta atxaba lugar
- Pa kriansas na idadi pré-skolar, tinha 19.115 lugar pa 18.770 kriansa.
- Es ixésu di 2% di lugaris pa pré-skolar ta sukundi défisi ki ten na 8 zóna

*Sô 1 na kada 4 bebê y kriansa pikinóti ta atxaba un lugar nun ambiente di kuidadus infantil formal*





# Dipartaméntu di Idukason y Kuidadus Infantil di Massachusetts (EEC)

GABINETI DI PRIMÉRU  
INFÁNSIA



- EEC ta faze párti di Gabinetei Izekutivu di Idukason
- Dipartamentu ten un skritóriu sentral y sinku skritóriu rijjional
- Konselhu di Idukason y Kuidadus Infantil **ta difini pulítikas y rigulaméntus rilasionadu ku prugramas y sirvisus di idukason y kuidadus infantil** na Stadu di Massachusetts
- EEC ta garanti **siguransa y kualidadi** na sigintis prugrama idukason y kuidadus infantil:
  - *Kuidadus infantil na família y na séntrus*
  - *Pré-skolar*
  - *Apoiú pa família*
  - *Rizidensial (izénplu: rizidénsias kuletivu, skólas rizidensial) y*
  - *Kolokason (izénplu: akolhiméntu y adoson)*

- **Lisensiaméntu y fiskalizason** di serka di 8.700 organizason públiku y privadu.
  - *Kada un di kes entidadi la ta meste vizitas anual di lisensiaméntu, monitorizason y apoiu permanenti, y asisténsia tékniku ki Dipartaméntu ta da.*
- **Formason y apoiu pa midjora kualidadi** di idukason y kuidadus ki es ta da.
  - *Kel-li ta inklui un sistéma di klasifikason di kualidadi ki ten partisipason di 5.000 prugrama di idukason y kuidadus infantil, y tanbe otus tipu di formason y apoiu permanenti, y rikursus adisional*
- **Apoi pa milharis di idukador infantil** na organizasons públiku y privadu.
  - *Kel-li ta fazedu através di izijéncias y atividadis di dizenvolviméntu prufisional, nórmes di kridensial y konpiténsia, verifikason di antisidentis, y bólsas di studu pa apoia obtenson di diplómas*

# LISENSIAMÉNTU Y APROVASON

606 CMR 7.00



EEC ilabora **rigulaméntus spisífiku ki tudu prestador di sirvisus di kuidadus y idukason infantil** na Stadu **debe kunpri**, na kaza (FCC), na skóla ô na séntrus (CBO).

Dipartaméntu pode imiti un lisénsa pa kuidadus infantil désdi ki:

- *na opinion di EEC, sirvisus ki prugrama ta oferese é adekuadu pa pruteje saúdi y siguransa di kriansas;*
- *rikirenti aprizenta un pididu prenxedu nun furmuláriu di EEC, inkluidu taxa di pididu di lisénsa y dukuméntus nisisáriu;*
- *rializa Verifikason di Antisidentis di tudu funsionáriu (CORI y SORI)*
- *kunpri izijéncias di spasu intirior y stirior, kódigu di konstruson, kódigu di inséndiu, y kódigus di zoniaméntu*

Pa CBO un lisénsa ô aprovason normal é **válidu durante dos anu** y pa FCC **durante três anu** apartir di data di imison, anonser ki el for rivotadu, suspendedu ô si el biradu pruvizóriu.

# Inpaktu di Alterasons Prupostu

GABINETI DI PRIMÉRU  
INFÁNSIA



# INPAKTU DI ALTERASONS PRUPOSTU NA FAMÍLIAS

*Un sidadi más amigu di famíias*

## Más asesibilidad y kualidadi

Ku más prestador di kuidadus infantil na sidadi, ta ten más lugar disponível pa kriansas di 0 a 5 anu, má tanbe más prestador lisenziadu di altu kualidadi.

## Ménus ténpu di dislokason

Ku más opson di kuidadus infantil na tudu zóna, kuidadoris ta ten opurtunidadi di skodje kuidadus ifnantil pértu di kaza ô di trabadju, y kel-la ta diminui ténpu di dislokason.


## Más pesoa ta trabadja

Ku más opson di kuidadus infantil lisenziadu, siguru y di altu kualidadi, pais ki ta trabadja, spisífikamenti kes mai, ta ten opurtunidadi di kontinua ta trabadja.

## Ménus kustu di kuidadus infantil

Ku más barera di zoniaméntu, kustu di kuidadus ta aumenta, y ta fika más difisil atxa spasmus (rizidensial & non-rizidensial) ki ta piriti kuidadus infantil lisenziadu. Ménus opson pode kauza aumentu di kustus pa moradoris di zóna.

# INPAKTU DI ALTERASONS PRUPOSTU NA PRUMUTORIS Y PRESTADORIS



## Más espasu di baxu kustu pa kuidadus infantil

Prumutoris imobiliáriu ten más insentivu pa oferese espasu pa kuidadus infantil na tudu tipu di prujétu, rízidensial, skritóriu, utilizason mistu y kumersial, inkluidu nóvus konstruson y ri-utilizason.

## Ménus kuidadus infantil sén rigulamentason

Kes prestador ki ka sta lisensiadu pode konsigi lisénsa y kunpri kódigu, óra ki iliminadu kes barera ki kódigu di zoniaméntu atual ta kria.




## Más opurtunidadei ikunómiku

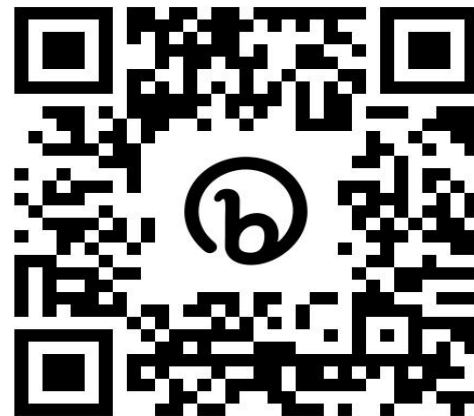
Óra ki abridu struturas di kuidadus infantil na zónas ki ten défisi di asésu, kel-la pode atraí investiméntu di prumutoris y di prestadoris di kuidadus infantil.

## Ménus karga pa prestadoris y prumutoris

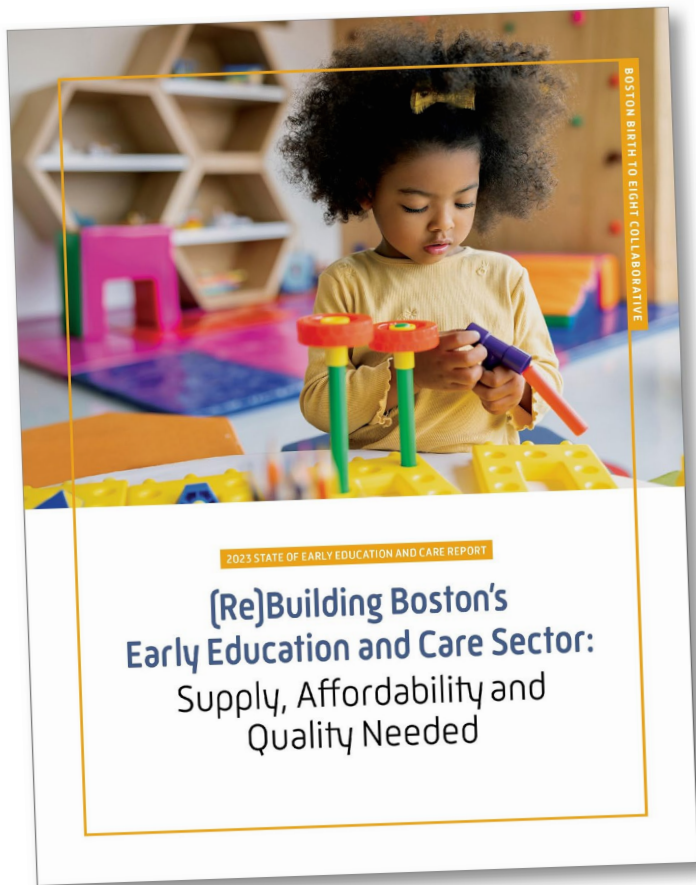
Prusidiméntus pa lokaliza struturas di kuidadus infantil na lugaris apropiadu y siguru pa kriansas, ka debe ser konplikadu dimás y debe sta rilasionadu ku tamanhu y inpaktu di uzu di sólu.



# SKÂNIA PA LÊ RILATÓRIU



*Obrigadu!*





"Children playing in West Canton Park" (1970) taken by Boston Redevelopment Authority  
Freedom House, Inc. Records, Northeastern University Archives and Special Collections



## Alterason di Testu di Zoniaméntu di Struturas pa Kuidadus Infantil na Sidadi Interu

*Riunion Públiku – 28.08.2023*



**boston planning &  
development agency**

# Kuzê k'é un alterason di testu di zoniamentu?

*Y módi ki el ta djuda rizolve kes probléma li?*



# Alterason di Testu di Zoniaméntu

*Un alterason ô konjuntu di alterason na pártis di Kódigu di Zoniaméntu ki ta bira un nóvu konjuntu di régras pa utilizason ô dizenvolviméntu di terenus na Sidadi óra ki es aprovadu.*

**Cultural Uses.** Art gallery; art use; auditorium; cinema; concert hall; museum; public art display space; studio, arts; studio, production; theatre; or ticket sales.

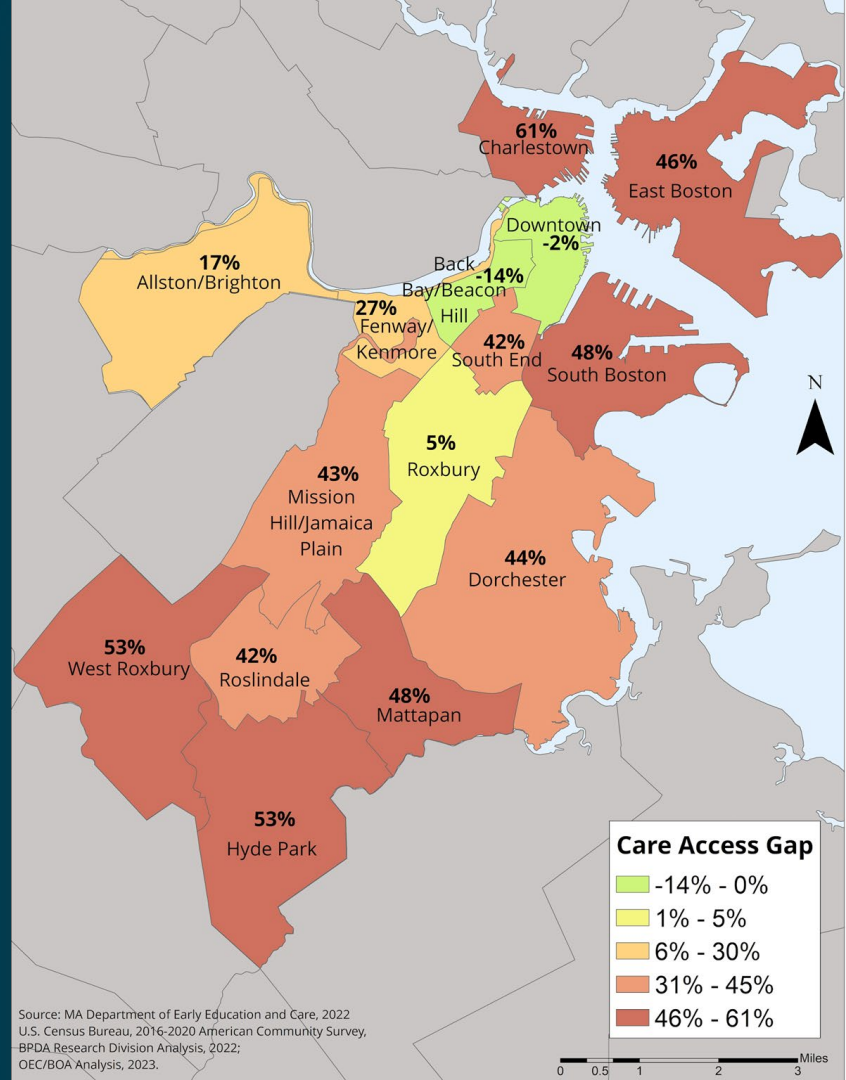
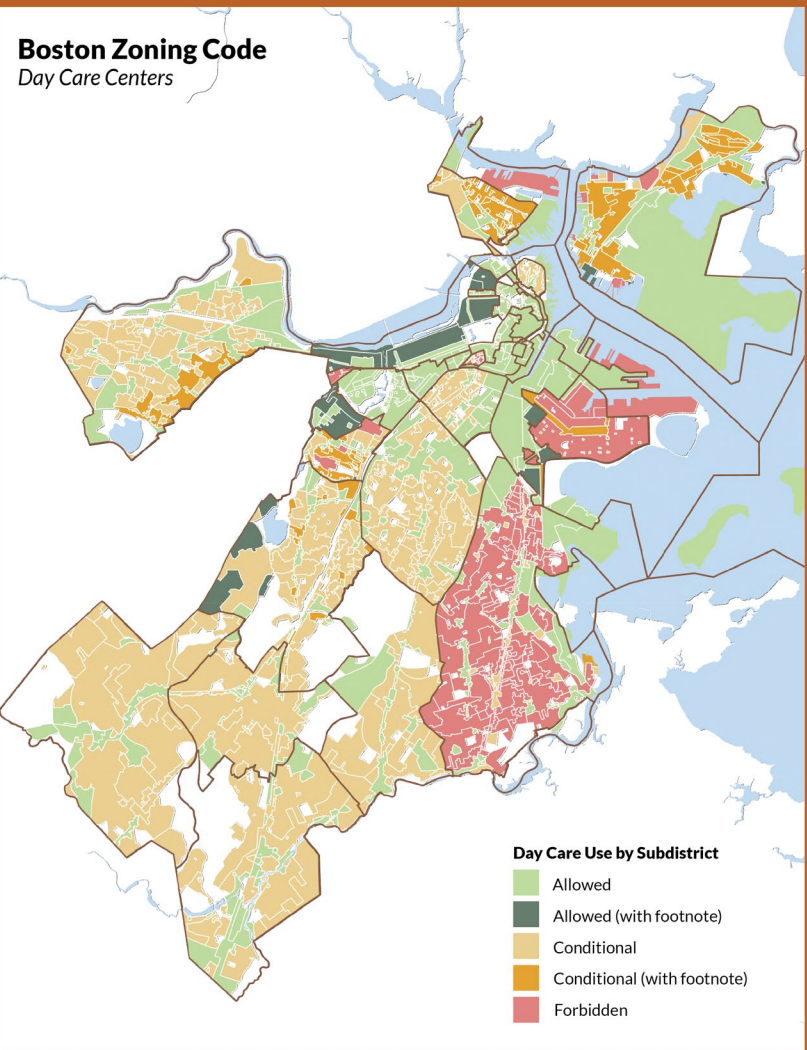
**Custodial Care Facility.** A facility which provides custodial care, supervision and/or guardianship for people experiencing substance use disorder, or with cognitive disabilities, or with mental health disabilities.

**Day Care Center.** Any facility operated on a regular basis whether known as a day nursery, nursery school, child play school, progressive school, child development center, or preschool, or known under any other name, which receives children not of common parentage under seven years of age, or children under sixteen years of age if such children are children with special needs as defined in Massachusetts General Laws, Chapter 28A, Section 9, for nonresidential custody and care during part or all of the day separate from their parents. Day care center shall not include: any part of a public school system; any part of a private, organized educational system, unless the services of such system are primarily limited to nursery or related preschool services; a Sunday school conducted by a religious institution; a facility operated by a religious organization where children are cared for during short periods of time while persons responsible for such children are attending religious services; a Family Day Care Home; an informal cooperative arrangement among neighbors or relatives; or the occasional care of children with or without compensation therefor.

	One-Family (1F)	Two-Family (2F)	Three-Family (3F)	Multifamily Residential (MFR)
Adult education center	F	F	F	F
Community center	C	C	C	C
Day care center	C	C	C	C
Day care center, elderly	C	C	C	C
Library	A	A	A	A
Place of worship; monastery; convent; parish house	A	A	A	A

# Boston Zoning Code

## Day Care Centers



Source: MA Department of Early Education and Care, 2022  
 U.S. Census Bureau, 2016-2020 American Community Survey,  
 BPDA Research Division Analysis, 2022;  
 OEC/BOA Analysis, 2023.



# Alterason di Testu di Zoniaméntu di Struturas pa Kuidadus Infantil

*Ki alterason ki sa ta fazedu?*



**boston planning &  
development agency**

# KUATU Prinsipal Alterason pa Apoia Kuidadus Infantil na Sidadi Interu

Muda "Day Care" pa "CHILD Care"

Kuidadus Infantil na TUDU Zóna

Kuidadus Infantil Alén di Rés-di-Txon

Ilimina Mínimus di Stasionaméntu





Department of Early  
Education and Care (EEC)



Muda "Day Care" pa  
"CHILD Care"

- “Day care centers” ta bira **“child care centers”**
- “Accessory day care homes” ta bira **“accessory child care homes”**
- Dipartaméntu di Idukason y Kuidadus Infantil di Massachusetts (EEC) ta nomiadu komu ajénsia di stadu ki ta rigulamenta prugramas di kuidadus infantil
- Ta iliminadu kel linguajen konfuzu sobri kuzê ki un sêntru di kuidadus infantil “ka” é

In the definition of the use item “Community Uses,” **delete** “day care center” and **replace** it with “child care center.”

**Delete** the use item and definition for “Day Care Center.”

**Day Care Center.** Any facility operated on a regular basis whether known as a day nursery, nursery school, child play school, progressive school, child development center, or preschool, or known under any other name, which receives children not of common parentage under seven years of age, or children under sixteen years of age if such children are children with special needs as defined in Massachusetts General Laws, Chapter 28A, Section 9, for nonresidential custody and care during part or all of the day separate from their parents. Day care center shall not include: any part of a public school system; any part of a private, organized educational system, unless the services of such system are primarily limited to nursery or related preschool services; a Sunday school conducted by a religious institution; a facility operated by a religious organization where children are cared for during short periods of time while persons responsible for such children are attending religious services; a Family Day Care Home; an informal cooperative arrangement among neighbors or relatives; or the occasional care of children with or without compensation therefor.

**Insert** the following new use item and definition for “Child Care Center” in the appropriate position alphabetically:

**Child Care Center.** Any facility operated on a regular basis, whether known as a child nursery, nursery school, kindergarten, child play school, progressive school, child development center, or preschool, or known under any other name, which receives children not of common parentage under seven (7) years of age, or under sixteen (16) years of age if those children have special needs as defined in Massachusetts General Laws, for nonresidential custody and care during part or all of the day separate from their parents. Any facility of this type shall comply with the standards, inspectional requirements, and dimensional regulations as established by the Massachusetts Department of Early Education and Care (or a successor agency responsible for the state licensing of home-based child care facilities).

**Delete** the use item and definition for “Family Day Care Home.”

**Family Day Care Home.** Any dwelling unit which on a regular basis receives, for temporary custody and care during part or all of the day, children under seven years of age, or children under sixteen years of age if such children are children with special needs as defined in Massachusetts General Laws, Chapter 28A, Section 9; provided, however, in either case, that:

- (1) The unit is licensed by the Massachusetts Office of Child Care Services (or a successor agency responsible for the state licensing of home-based child care facilities) for the number of participating children; and
- (2) The total number of children under sixteen in a family day care home shall not exceed ten, including participating children living in the dwelling unit. Family day care home shall not mean a dwelling unit used for an informal cooperative arrangement among neighbors or relatives, or the occasional care of children with or without compensation therefor.

**Insert** the following new use item and definition for “Family Child Care Home” in the appropriate position alphabetically.

**Family Child Care Home.** Any dwelling unit which, on a regular basis, receives for temporary custody and care during part or all of the day, children under seven (7) years of age, or children under sixteen (16) years of age if those children have special needs, and receives for temporary custody and care for a limited number of hours children of school age under regulations adopted by the Board of Early Education and Care as defined in Massachusetts General Laws; provided, however, in either case that:

- (1) The unit is licensed by the Massachusetts Department of Early Education and Care (or a successor agency responsible for the state licensing of home-based child care facilities) for the number of participating children per the agency’s standards, inspectional requirements, and dimensional regulations, and
- (2) The total number of children under sixteen (16) in a family child care home shall not exceed ten (10), including participating children living in the dwelling unit.





*Auntie Madge & Papa Childcare Services, Mattapan*



*Ms. Luz's NeighborSchool, East Boston*



*Our Future Learning Center, Allston-Brighton*

# Kuidadus Infantil na TUDU Zóna





*Genelys Family Child Care, Jamaica Plain*

# Kuidadus Infantil Alén di Rés-di-Txon

- **Struturas di kuidadus infantil ta piritidu pa riba di rés-di-txon na tudu subdistritu di zónas** – di akordu ku pirmsions di stadu
- **Ta iliminadu kes ristringon ixsesivu rilasionadu ku tamanhu (métru kuadrado) di struturas di kuidadus infantil n’alguns zóna**

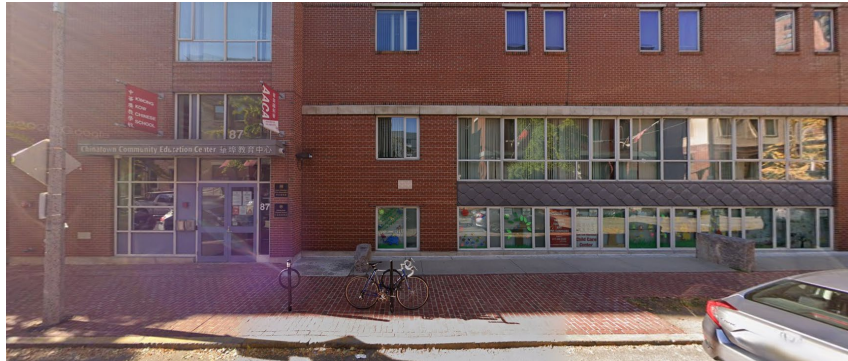
In each use table of Articles 50 through 73, under the subcategory heading “Community Uses,” in the row for the use item “Child care center,” **delete** all instances of the designations “C” and “F” and the numerical citations next to those letters, and **replace** them with the designation of “A.”

In each use table of Articles 50 through 73, under the subcategory heading “Accessory and Ancillary Uses,” in the row for the use item “Accessory family child care home,”

- Delete** all instances of the designations “C” and “F” and the numerical citations next to those letters, and **replace** them with the designation of “A.”

	One Family (1F)	Two Family (2F)	Three Family (3F)	Conservation Multifamily Residential (MFR)	Community Protection Subdistricts (CPS)	Facilities Subdistricts (CF)
Child care center	€A	€A	€A	€A <sup>(2)</sup>	A	€A

**(2) Where designated “A” or “C,” provided that such use is located on the ground floor, or in a basement with a separate entrance; otherwise forbidden.**



*Buds & Blossoms Child Care & Early Education Center,  
Chinatown*

Séntrus di Kuidadus  
Infantil pode  
konstrui  
stasionaméntu ki es  
meste – má kódigu  
di zoniaméntu ka ta  
ben iziji más di ki  
kel-la

- Atualmenti, kódigu ta preve un **númeru mínimu di lugaris di stasionaméntu** ki séntrus di kuidadus infantil ten obrigason di konstrui
- Es alterason ta ben **ilimina kel izijénsia mínimu di stasionaméntu**
- Séntrus di kuidadus infantil pode konstrui lugaris di stasionaméntu si ten nisisidadi, má **dja es ka ten obrigason di konstrui stasionaméntu si es ka meste**

In each table related to off-street parking regulations, **delete** “day care center” as a use item from the table.

Off-Street Parking Requirements

	Spaces Per 1,000 Square Feet of Gross Floor Area <sup>(2)</sup>
<del>Day Care Center</del>	0.7

# Inpaktu di Alterasons Prupostu na Utilizason & Dizenvolviméntu

**Muda "Day Care" pa "CHILD Care"** = *Di akordu ku térmus y difinisons di stadu*

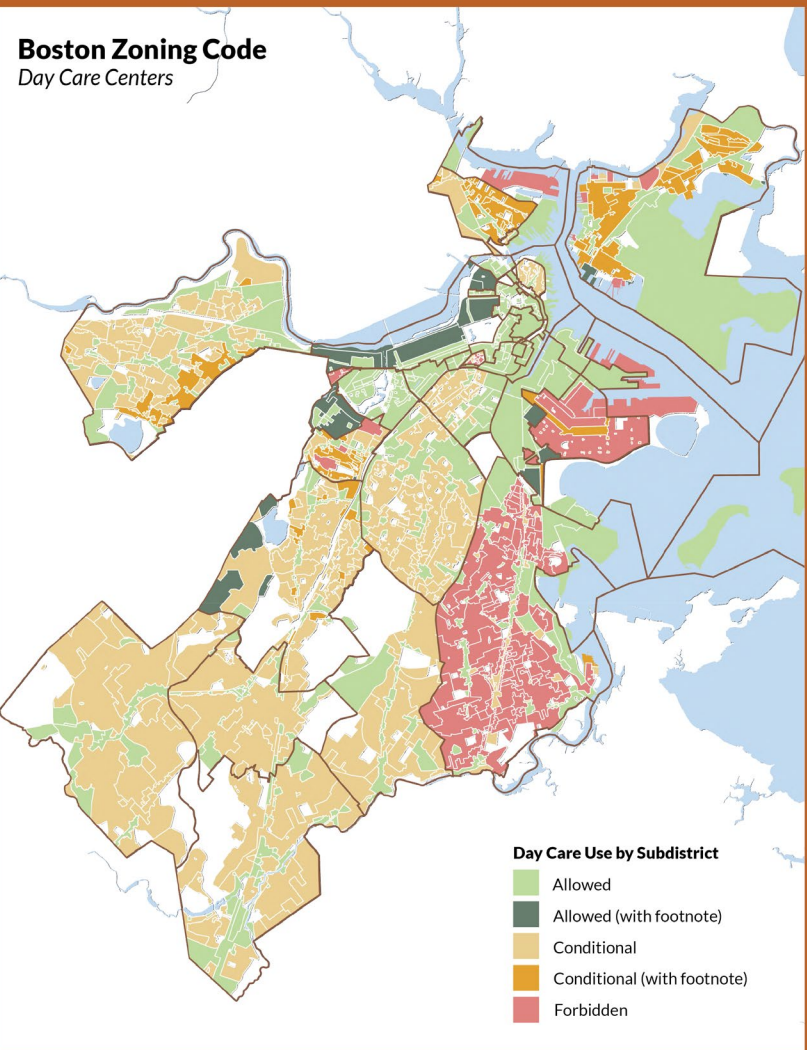
**Kuidadus Infantil na TUDU Zóna** = *Struturas di kuidadus infantil pirmitidu komu un uzu di sólu na sidadi interu*

**Kuidadus Infantil Alén di Rés-di-Txon** = *Ilimina bareras rilationadu ku undi ki un kriansa pode sta nun prédiu*

**Ilimina Mínimus di Stasionaméntu** = *Djuda séntrus di kuidadus infantil konstrui stasionaméntu sô si es ten nisisidadi*



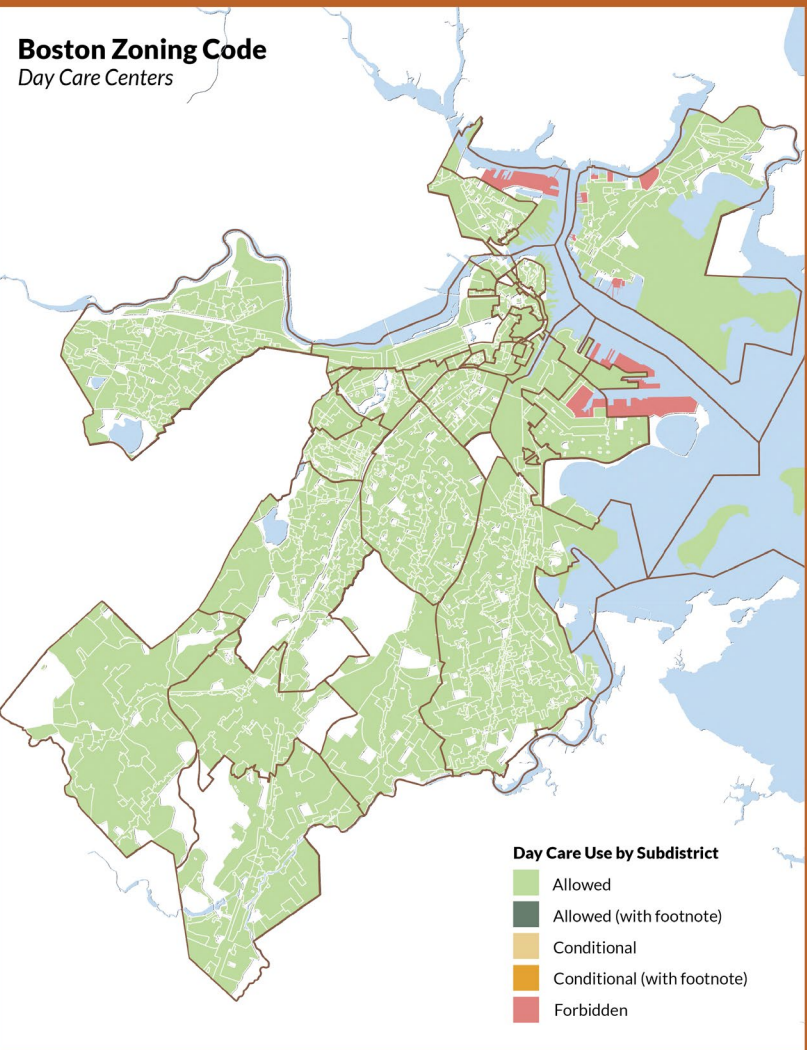
**Boston Zoning Code**  
Day Care Centers



Kuzê ki nu tene  
oji...



**Boston Zoning Code**  
Day Care Centers



Kuzê ki nu ta  
pusibilita pa nos  
moradoris más  
pikinóti manhan...

# INPAKTU DI ALTERASONS PRUPOSTU NA FAMÍLIAS

*Un sidadi más amigu di famíias*

## Más asesibilidad y kualidadi

Ku más prestador di kuidadus infantil na sidadi, ta ten más lugar dispunível pa kriansas di 0 a 5 anu, má tanbe más prestador lisensiadu di altu kualidadi.

## Ménus ténpu di dislokason

Ku más opson di kuidadus infantil na tudu zóna, kuidadoris ta ten opurtunidadi di skodje kuidadus ifnantil pértu di kaza ô di trabadju, y kel-la ta diminui ténpu di dislokason.


## Más pesoa ta trabadja

Ku más opson di kuidadus infantil lisensiadu, siguru y di altu kualidadi, pais ki ta trabadja, spisífikamenti kes mai, ta ten opurtunidadi di kontinua ta trabadja.

## Ménus kustu di kuidadus infantil

Ku más barera di zoniaméntu, kustu di kuidadus ta aumenta, y ta fika más difisil atxa spasus (rizidensial & non-rizidensial) ki ta piriti kuidadus infantil lisensiadu. Ménus opson pode kauza aumentu di kustus pa moradoris di zóna.

# INPAKTU DI ALTERASONS PRUPOSTU NA PRUMUTORIS Y PRESTADORIS



## Más espasu di baxu kustu pa kuidadus infantil

Prumutoris imobiliáriu ten más insentivu pa oferese espasu pa kuidadus infantil na tudu tipu di prujétu, rízidensial, skritóriu, utilizason mistu y kumersial, inkluidu nóvus konstruson y ri-utilizason.

## Ménus kuidadus infantil sén rigulamentason

Kes prestador ki ka sta lisensiadu pode konsigi lisénsa y kunpri kódigu, óra ki iliminadu kes barera ki kódigu di zoniaméntu atual ta kria.




## Más opurtunidadei ikunómiku

Óra ki abridu struturas di kuidadus infantil na zónas ki ten défisi di asésu, kel-la pode atraí investiméntu di prumutoris y di prestadoris di kuidadus infantil.

## Ménus karga pa prestadoris y prumutoris

Prusidiméntus pa lokaliza struturas di kuidadus infantil na lugaris apropiadu y siguru pa kriansas, ka debe ser konplikadu dimás y debe sta rilasionadu ku tamanhu y inpaktu di uzu di sólu.



# Alarga Flexibilidadi di Struturas di Kuidadus Infantil na Sidadi Interu

*Kes-li é spasus di kuidadus infantil na bu zóna — y alguns di kes kuza ki ta ben ser pusível si es alterason for aprovadu!*





# Obrigadu! Perguntas?

---

*pa más informason sobri es iniciativa di zoniaméntu,*

*vizita: [bit.ly/BPDACHildCareZoning](https://bit.ly/BPDACHildCareZoning)*

*Pa kumentáriu públiku di oji ti **6 di siténbru di 2023**,*

*vizita: [bit.ly/ChildCareFeedbackSurvey](https://bit.ly/ChildCareFeedbackSurvey)*

**Public Comment  
Period**

08.28.2023 to  
09.06.2023

**BPDA Board  
Meeting**

09.14.2023

**Zoning  
Commission  
Meeting**

10.11.2023

**Next Steps**

