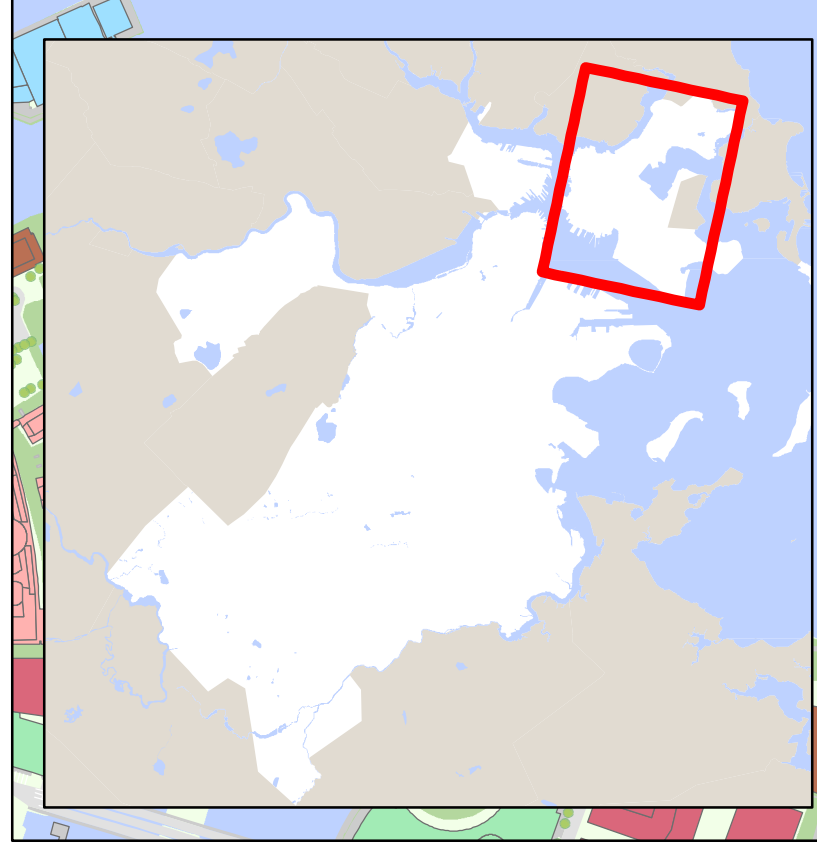


Neighborhood of East Boston



0 0.1 0.2 0.3 0.4 0.5 Mile

This map was produced by the Boston Planning and Development Agency, Office of Digital Cartography and GIS. The locations of features and boundaries shown on this map are approximate and are intended for planning and visualization purposes only. This is not intended for survey, engineering, or legal purposes. November, 2016



- Single Family Residential
- Two Family Residential
- Three Family Residential
- Residential (4-6 units)
- Apartment
- Condominium
- Mixed Use
- Commercial
- Industrial
- Institutional
- Government
- Garage, Tanks, Other