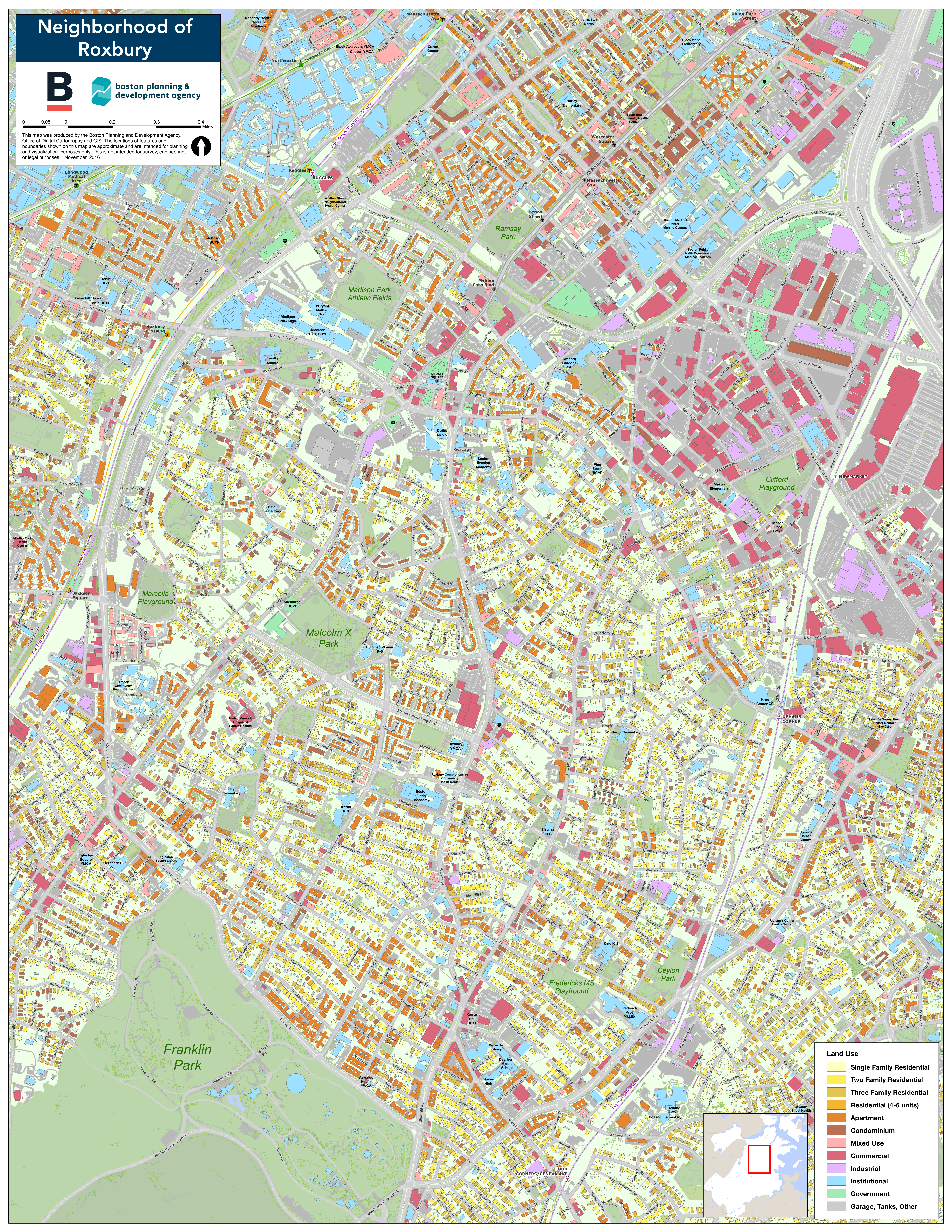
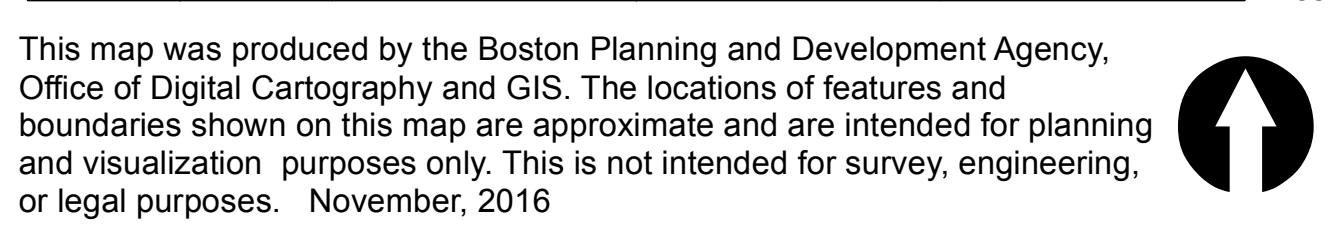
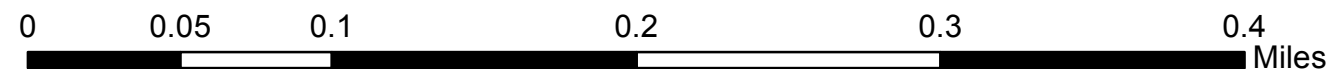


# Neighborhood of Roxbury



This map was produced by the Boston Planning and Development Agency, Office of Digital Cartography and GIS. The locations of features and boundaries shown on this map are approximate and are intended for planning and visualization purposes only. This is not intended for survey, engineering, or legal purposes. November, 2016



Land Use	
	Single Family Residential
	Two Family Residential
	Three Family Residential
	Residential (4-6 units)
	Apartment
	Condominium
	Mixed Use
	Commercial
	Industrial
	Institutional
	Government
	Garage, Tanks, Other

