



Demographic and Socio-economic Trends in Boston: What we've learned from the latest Census data

Mark Melnik, Deputy Director for Research
Boston Redevelopment Authority
November 29, 2011

Outline of Presentation

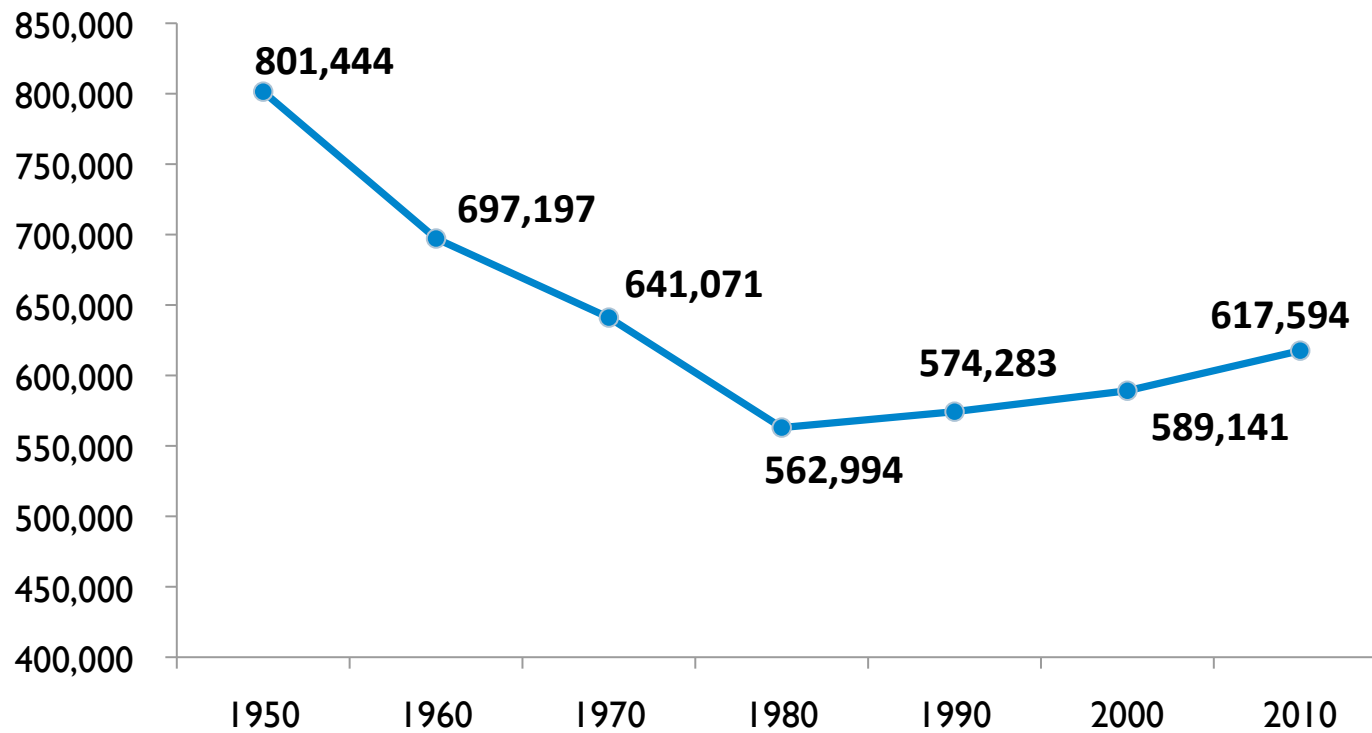
- Selected demographic trends
 - Growth
 - Diversity
 - Youth
 - Education
- Selected socio-economic trends
 - Historic employment and unemployment trends
 - Educational attainment of labor force
 - Labor force characteristics



Boston is Growing

Historic Trends – Boston’s Population

- Boston reached its population peak in 1950
- Boston’s population, like many major cities, declined after 1950
- In recent decades, Boston’s population has grown
- The 2010 Census marks the first time since 1970 that Boston’s population has been over 600,000



Major Northeastern Cities and Population Change, 2010 Census

- Boston's population growth since 2000 compares favorably to most other northeastern cities

City	Total Population		Population Change 2000-2010	
	2000	2010	N	%
Washington (DC)	572,059	601,723	29,664	5.2%
Worcester (MA)	172,648	181,045	8,397	4.9%
Boston (MA)	589,141	617,594	28,453	4.8%
Cambridge (MA)	101,355	105,162	3,807	3.8%
Elizabeth (NJ)	120,568	124,969	4,401	3.7%
Hartford (CT)	121,578	124,775	3,197	2.6%
Providence (RI)	173,618	178,042	4,424	2.5%
New York (NY)	8,008,278	8,175,133	166,855	2.1%
Newark (NJ)	273,546	277,140	3,594	1.3%
Springfield (MA)	152,082	153,060	978	0.6%
Philadelphia (PA)	1,517,550	1,526,006	8,456	0.6%
Baltimore (MD)	651,154	620,961	-30,193	-4.6%
Pittsburgh (PA)	334,563	305,704	-28,859	-8.6%
Buffalo (NY)	292,648	261,310	-31,338	-10.7%

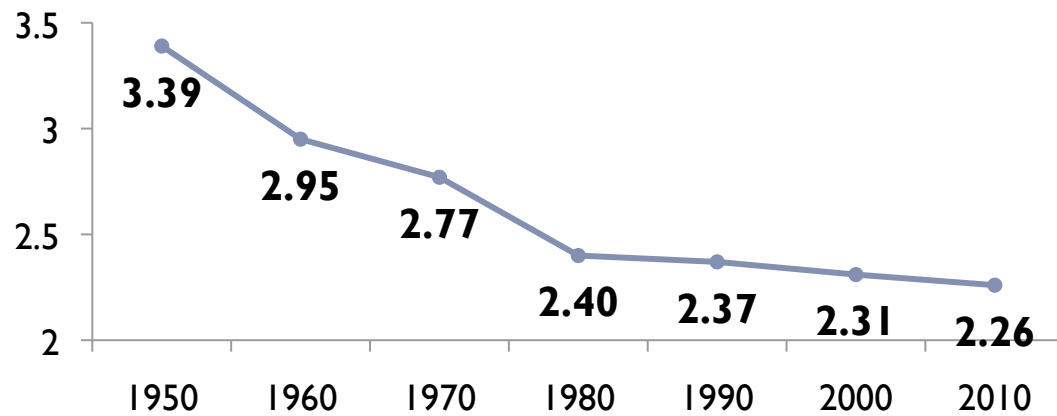
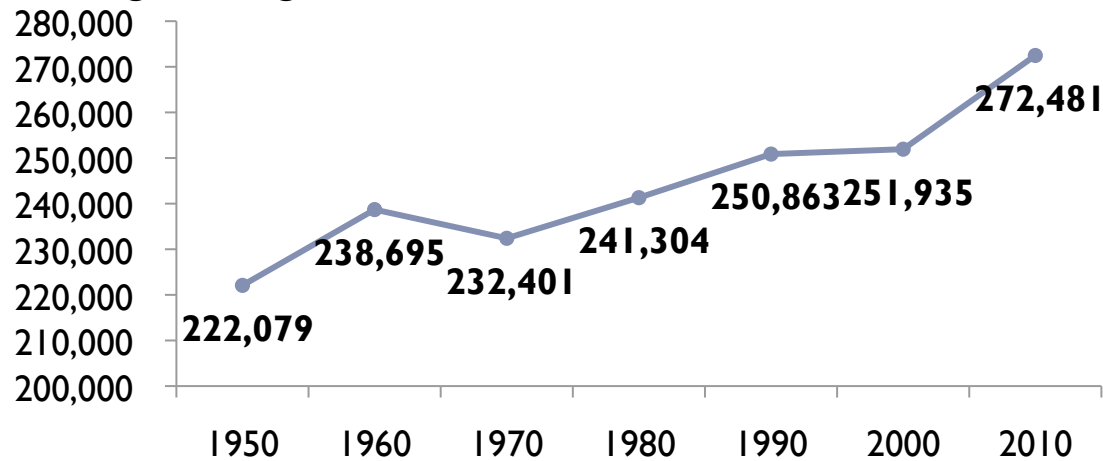
20 Largest US Cities and Population Change, 2010 Census

- Boston's population growth rate since 2000 was higher than the rates for New York and San Francisco
- Four of the 20 largest cities experienced population declines between 2000 and 2010

City	Total Population		Population Change 2000-2010	
	2000	2010	N	%
Fort Worth (TX)	534,694	741,206	206,512	38.6%
Charlotte (NC)	540,828	731,424	190,596	35.2%
Austin (TX)	656,562	790,390	133,828	20.4%
San Antonio (TX)	1,144,646	1,327,407	182,761	16.0%
El Paso (TX)	563,662	649,121	85,459	15.2%
Jacksonville (FL)	735,617	821,784	86,167	11.7%
Columbus (OH)	711,470	787,033	75,563	10.6%
Nashville (TN)	545,524	601,222	55,698	10.2%
Phoenix (AZ)	1,321,045	1,445,632	124,587	9.4%
Seattle (WA)	563,374	608,660	45,286	8.0%
Houston (TX)	1,953,631	2,099,451	145,820	7.5%
San Diego (CA)	1,223,400	1,307,402	84,002	6.9%
San Jose (CA)	894,943	945,942	50,999	5.7%
Washington (DC)	572,059	601,723	29,664	5.2%
Indianapolis (IN)	781,870	820,445	38,575	4.9%
Boston (MA)	589,141	617,594	28,453	4.8%
San Francisco (CA)	776,733	805,235	28,502	3.7%
Los Angeles (CA)	3,694,820	3,792,621	97,801	2.6%
New York City (NY)	8,008,278	8,175,133	166,855	2.1%
Dallas (TX)	1,188,580	1,197,816	9,236	0.8%

Housing Units and Average Household Size

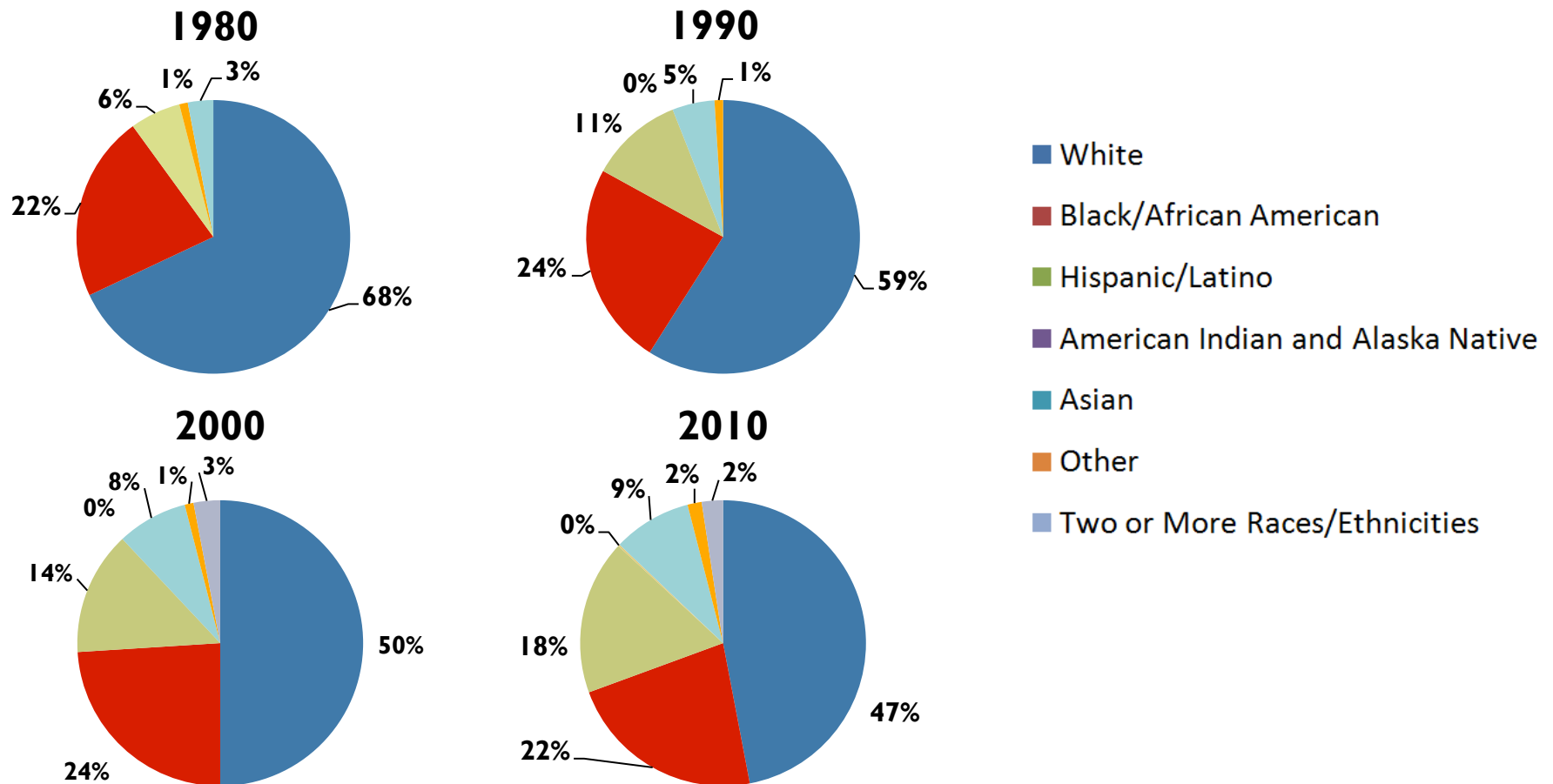
- Boston's housing stock has grown consistently over the last 40 years
- Boston's housing stock grew 8.2% since 2000



Boston is Diverse

Racial and Ethnic Breakdown for Boston's Population, 1980-2010

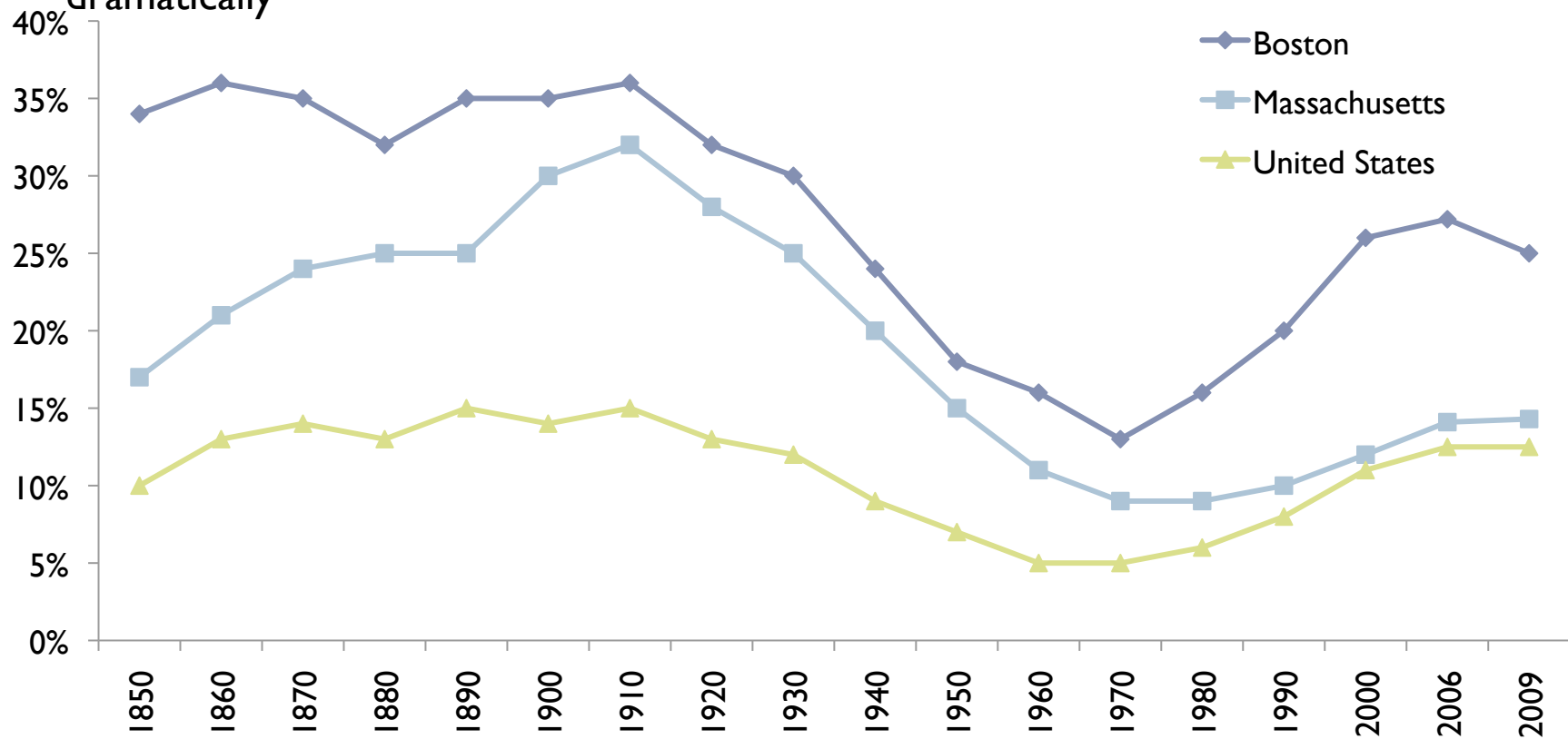
- Over the last several decades, the racial and ethnic composition of Boston has changed a great deal
- In 1980, close to 70% of Boston was white. Today, only half the city is white.
- The last two Census reports show Boston as a “majority-minority” city



Source: U.S. Census Bureau, BRA Research Division Analysis.
 Note: 2000 was the first year the Census compiled data on individuals who identified themselves as “multiracial”

Proportion of the Population that is Foreign-Born, 1850-2009

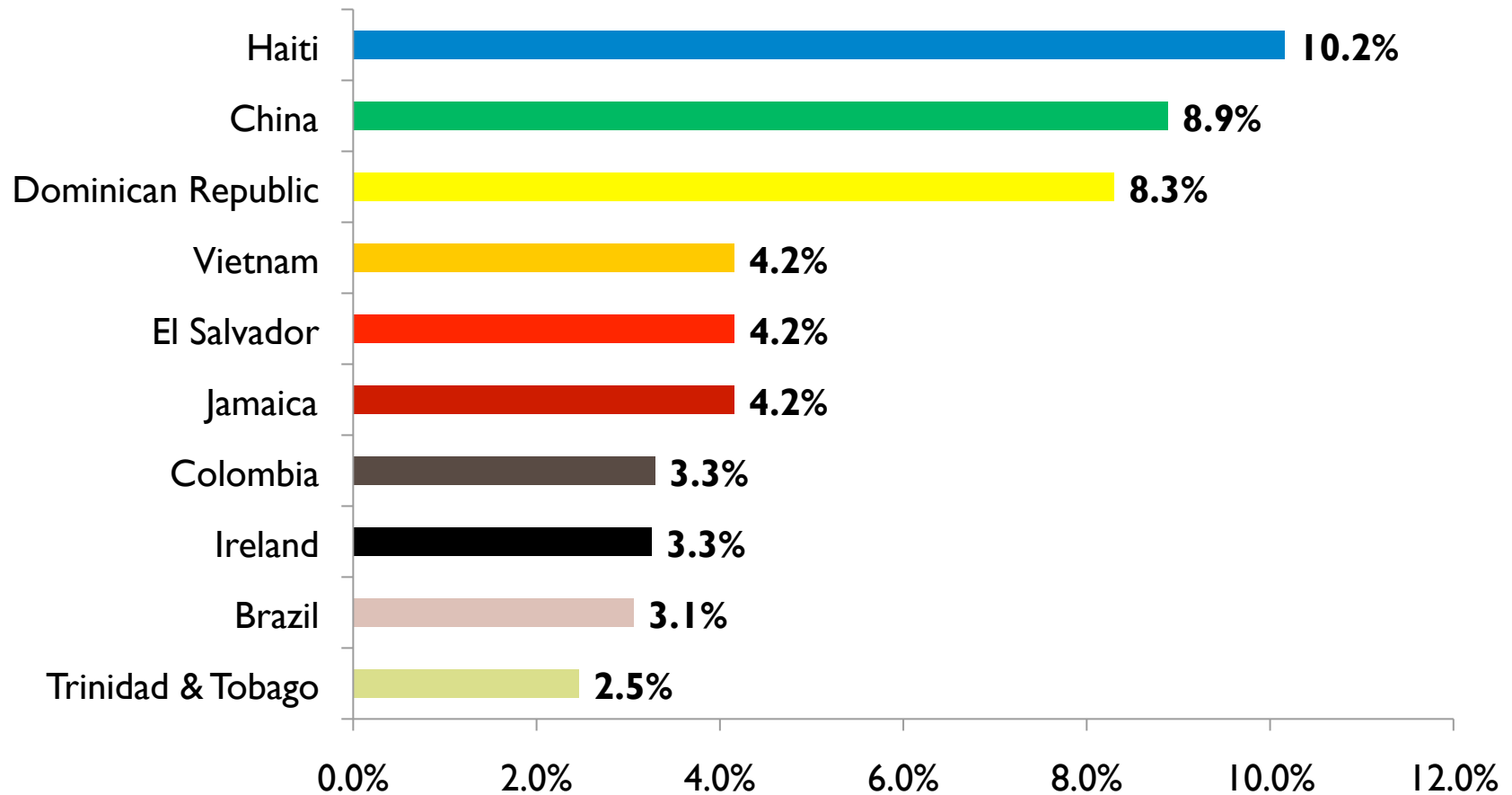
- Historically, Boston has had a greater proportion of foreign-born residents than both the Commonwealth of Massachusetts and the nation as a whole
- Since the 1970s, the proportion of foreign-born residents in Boston has grown dramatically



Source: U.S. Census Bureau, American Community Survey, BRA Research Division Analysis

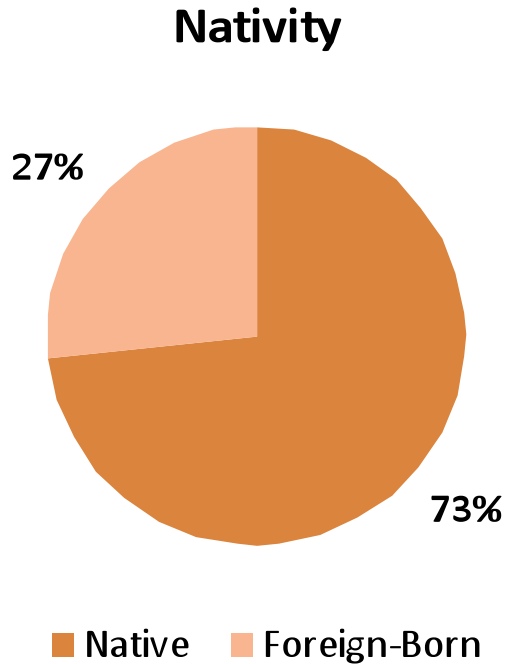
Countries of Origin for Boston's Foreign-Born Population, 2010

- Most of Boston's immigrants today come from the Caribbean, Latin America, and Asia
- This plays a major factor in "majority-minority"



25 Largest US Cities by Foreign Born Population

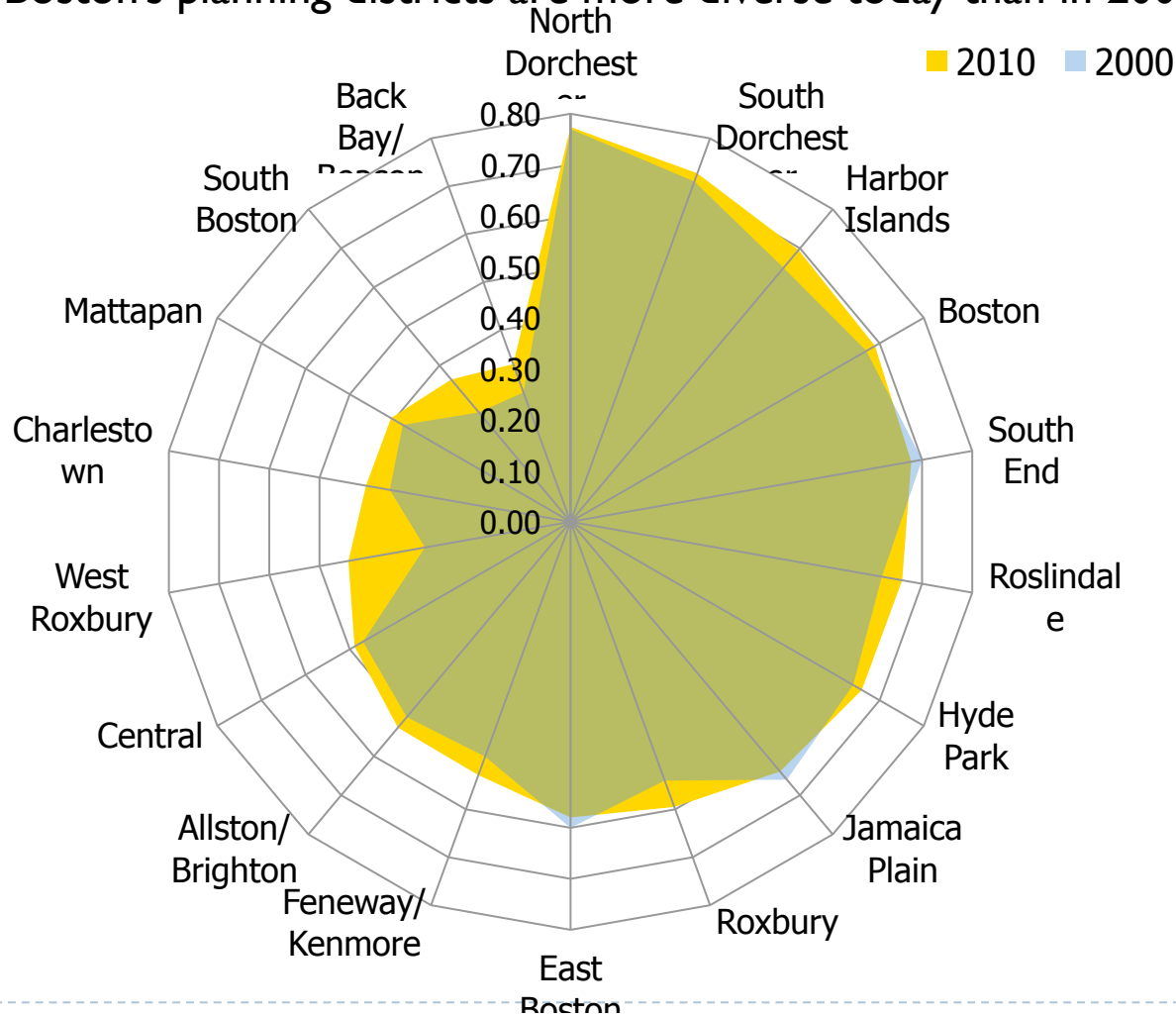
- Boston ranks 6th among the 25 largest cities in the US in proportion of the population that is foreign-born



Foreign Born Rank	% Foreign Born	City	Population Rank
1	39.1%	Los Angeles, CA	2
2	38.6%	San Jose, CA	10
3	37.2%	New York, NY	1
4	35.5%	San Francisco, CA	13
5	28.7%	Houston, TX	4
6	26.9%	Boston, MA	22
7	26.1%	San Diego, CA	8
8	25.3%	Dallas, TX	9
9	24.6%	El Paso, TX	19
10	20.7%	Chicago, IL	3
11	20.0%	Phoenix, AZ	6
12	18.7%	Austin, TX	14
13	17.2%	Seattle, WA	23
14	16.9%	Fort Worth, TX	16
15	14.4%	San Antonio, TX	7
16	14.4%	Charlotte, NC	17
17	13.5%	Washington, DC	24
18	11.6%	Philadelphia, PA	5
19	11.0%	Columbus, OH	15
20	10.9%	Nashville, TN	25
21	9.4%	Jacksonville, FL	11
22	9.0%	Indianapolis, IN	12
23	7.1%	Baltimore, MD	21
24	6.2%	Memphis, TN	20
25	4.8%	Detroit, MI	18

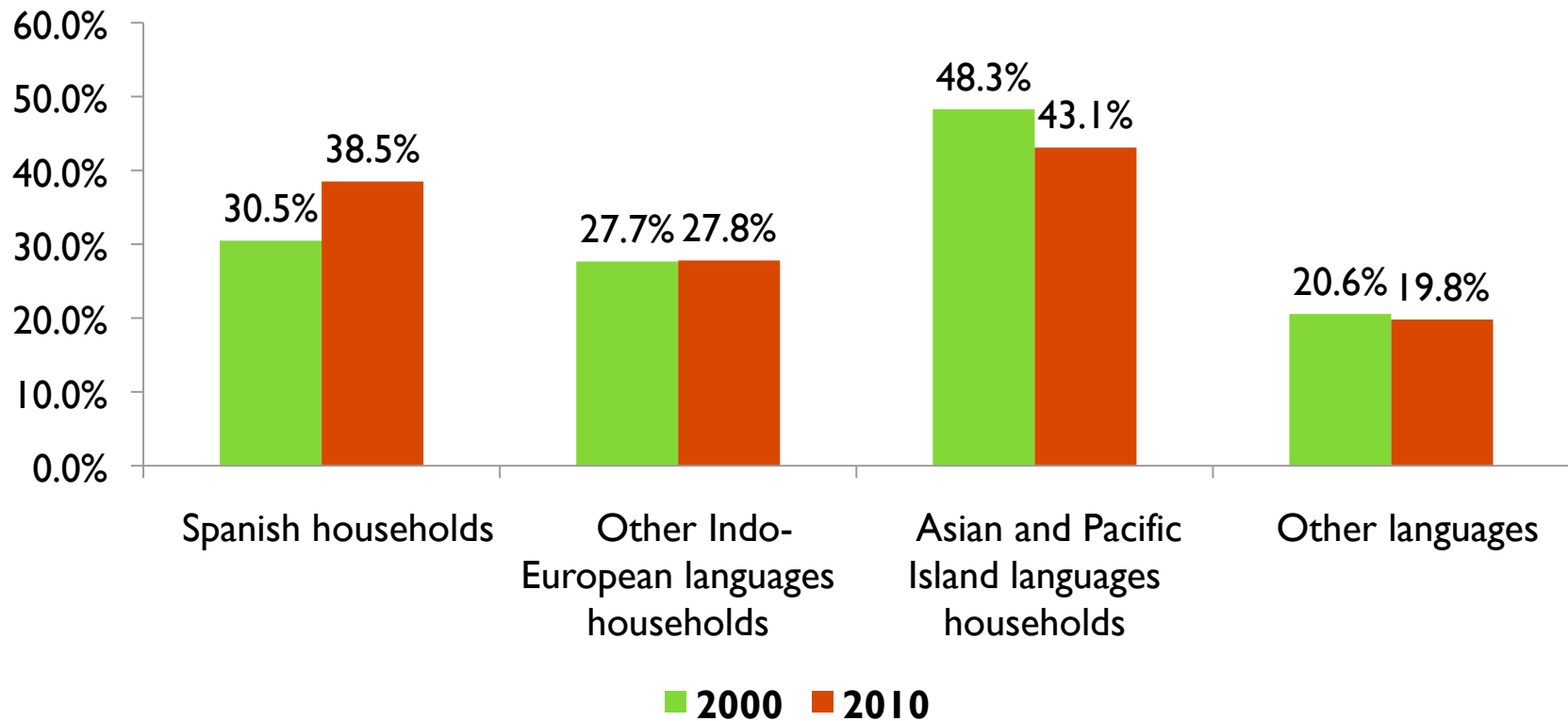
Planning District Diversity Index: 2000-2010

- Most of Boston's planning districts are more diverse today than in 2000



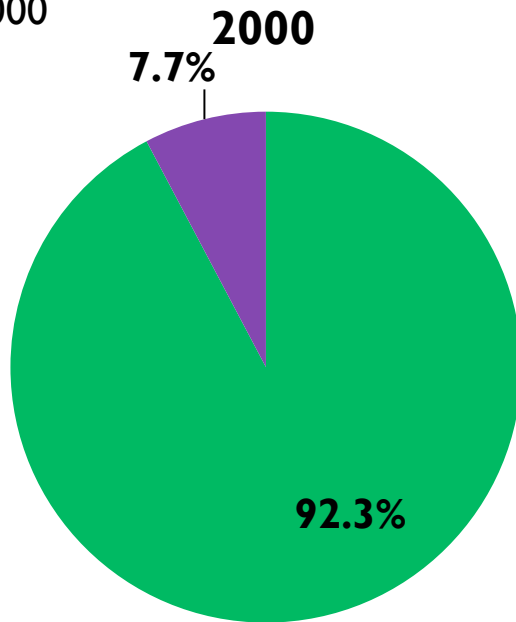
Linguistic Isolation

- ▶ In 2010, 12.4% of households in Boston were without a resident 14 years or older that spoke English very well; this was an increase from 10.7% of households in 2000
- ▶ The rise in linguistically isolated Spanish households reflects the high growth rate of foreign-born Hispanic households between 2000 and 2010

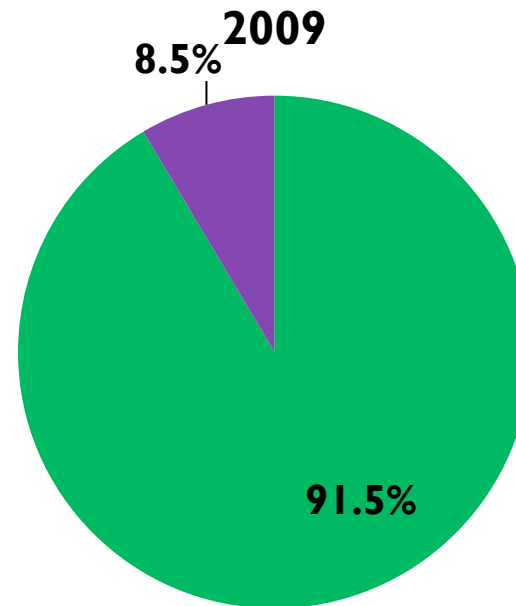


English Proficiency

- ▶ An estimated 8.5% of Bostonians had limited English proficiency in 2009; this increased about 0.8% from the same statistic in 2000.
- ▶ A higher percentage of foreign born residents have Limited English proficiency in 2009 than in 2000



■ English Proficient
■ Limited English Proficiency



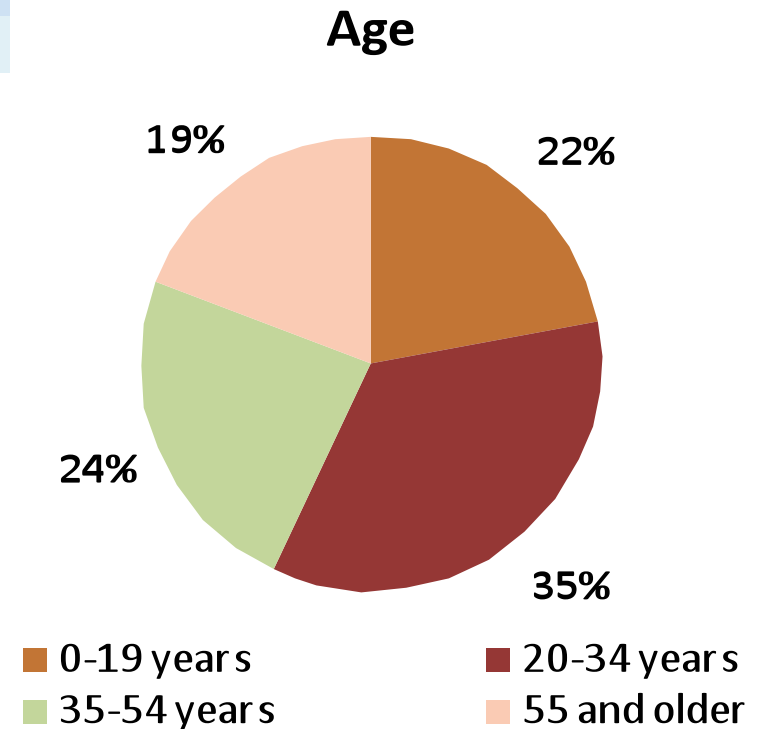
■ English Proficient
■ Limited English Proficiency

Boston is Young

Breakdown of Boston's Population by Age

- Boston is a young city; currently it has the highest concentration of young adults (20-34) among 15 of the largest cities in the US

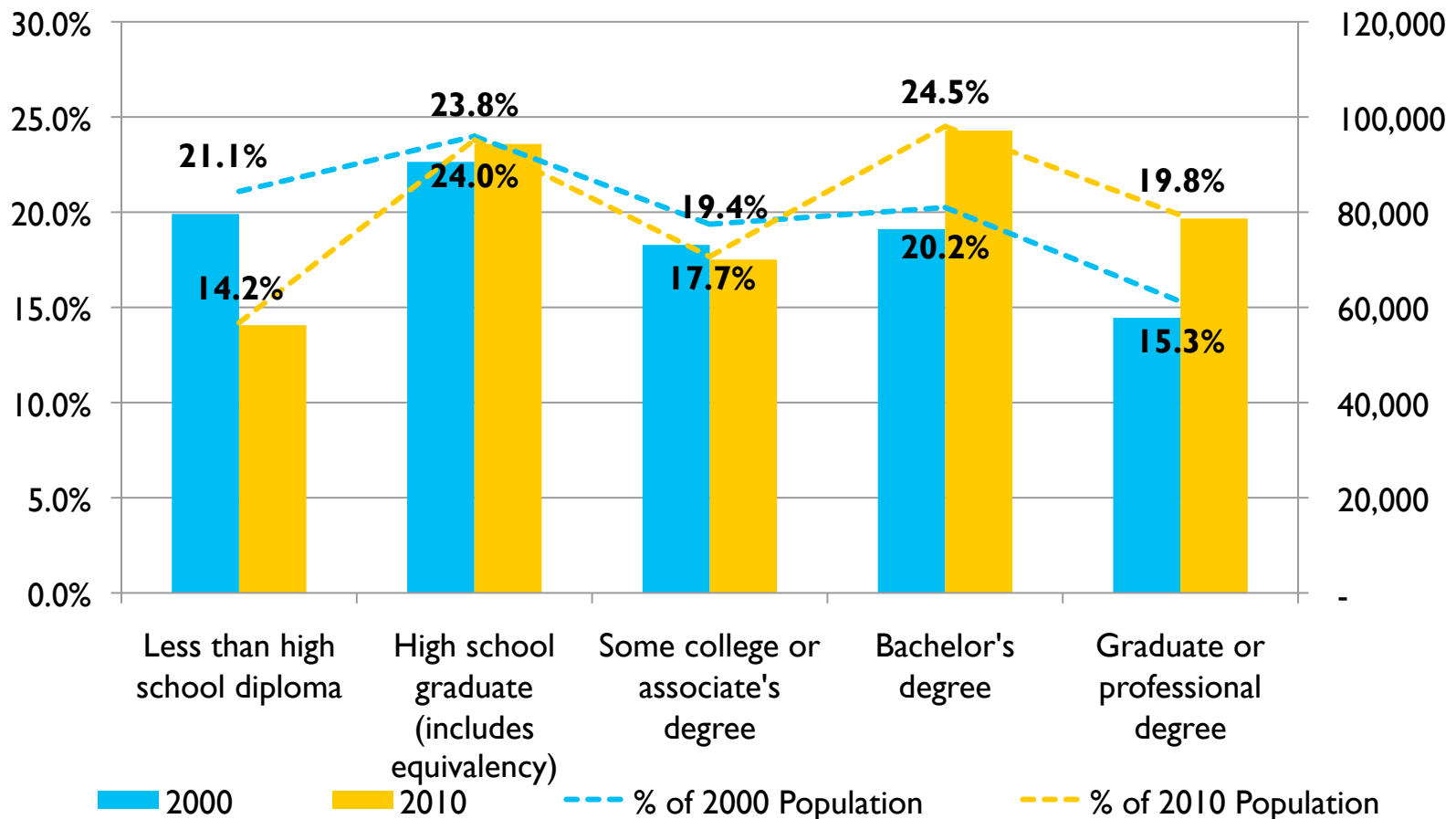
City	20 to 34-Year-Olds	% of Total Population	Location Quotient
Boston	216,213	35.0%	1.73
Austin	251,064	31.8%	1.57
Washington DC	188,855	31.4%	1.55
Atlanta	127,101	30.3%	1.49
Seattle	181,501	29.8%	1.47
San Francisco	228,738	28.4%	1.40
Chicago	738,578	27.4%	1.35
Dallas	314,728	26.3%	1.29
Houston	545,071	26.0%	1.28
Baltimore	160,024	25.8%	1.27
Philadelphia	392,776	25.7%	1.27
Los Angeles	953,443	25.1%	1.24
New York	2,035,030	24.9%	1.23
San Antonio	304,784	23.0%	1.13
Phoenix	330,885	22.9%	1.13



Boston is Educated

Educational Attainment of Population, 2000 and 2010

- Boston has one of the most highly-educated populations among major American cities. According to the 2010 American Community Survey, 44.3% of Boston's adult population has at least a bachelor's degree, ranking Boston 4th amongst the 25 largest cities in the nation.



Source: 2000 Census Summary File 3, 2010 American Community Survey, US Census Bureau, BRA Research Division Analysis

Educational Attainment of 25 Largest US Cities by Bachelor's Degree or Greater (25 years and older)

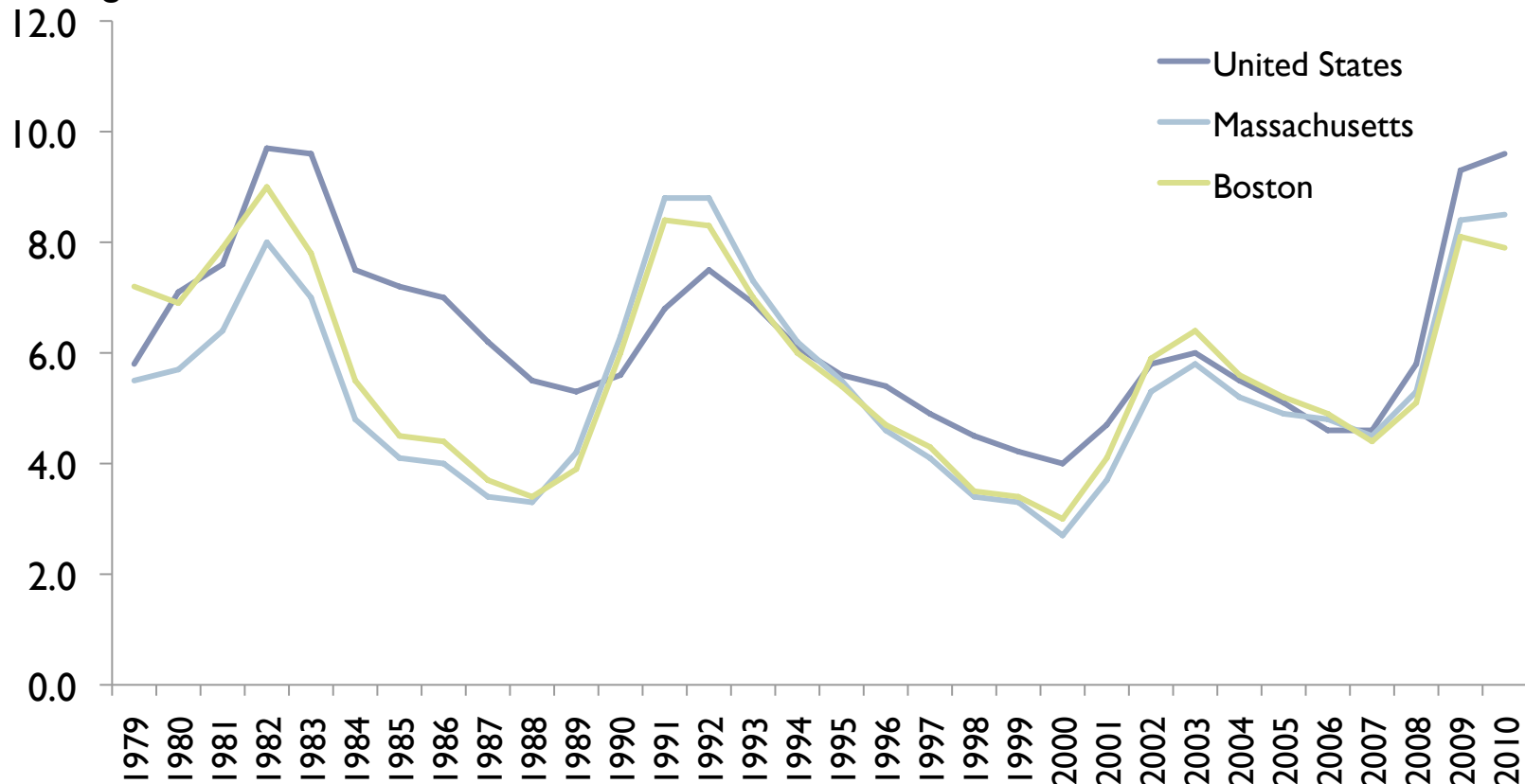
Rank	City	Bachelor's Degree	Graduate or Professional Degree	Bachelor's or greater
1	Seattle city, Washington	33.1%	22.9%	56.0%
2	San Francisco city, California	31.4%	19.5%	50.9%
3	Washington city, District of Columbia	23.2%	26.9%	50.1%
4	Boston city, Massachusetts	24.5%	19.8%	44.3%
5	Austin city, Texas	27.5%	16.1%	43.6%
6	San Diego city, California	24.1%	16.3%	40.4%
7	Charlotte city, North Carolina	25.9%	12.8%	38.7%
8	San Jose city, California	23.2%	13.4%	36.6%
9	Nashville-Davidson (balance), Tennessee	20.0%	13.6%	33.6%
10	Chicago city, Illinois	20.2%	13.2%	33.4%
11	New York city, New York	19.9%	13.4%	33.3%
12	Columbus city, Ohio	21.3%	10.4%	31.7%
13	Los Angeles city, California	20.4%	10.3%	30.7%
14	Dallas city, Texas	18.5%	10.4%	28.9%
15	Houston city, Texas	17.4%	11.0%	28.4%
16	Indianapolis city (balance), Indiana	17.6%	9.0%	26.6%
17	Fort Worth city, Texas	18.5%	7.5%	26.0%
18	Phoenix city, Arizona	16.6%	8.3%	24.9%
19	Baltimore city, Maryland	13.2%	11.0%	24.2%
20	Jacksonville city, Florida	17.0%	6.9%	23.9%
21	San Antonio city, Texas	15.0%	8.8%	23.8%
22	Memphis city, Tennessee	14.5%	8.4%	22.9%
23	Philadelphia city, Pennsylvania	12.8%	9.8%	22.6%
24	El Paso city, Texas	14.2%	7.3%	21.5%
25	Detroit city, Michigan	7.0%	4.9%	11.9%

Source: 2010 American Community Survey, US Census Bureau, BRA Research Division Analysis

Socio-economic Characteristics

Historic Unemployment Trend: 1979-2010

- Boston's unemployment rate is typically lower than national and state rates
- As of January 2011, Boston's unemployment rate was 7.8; two points lower than the national average



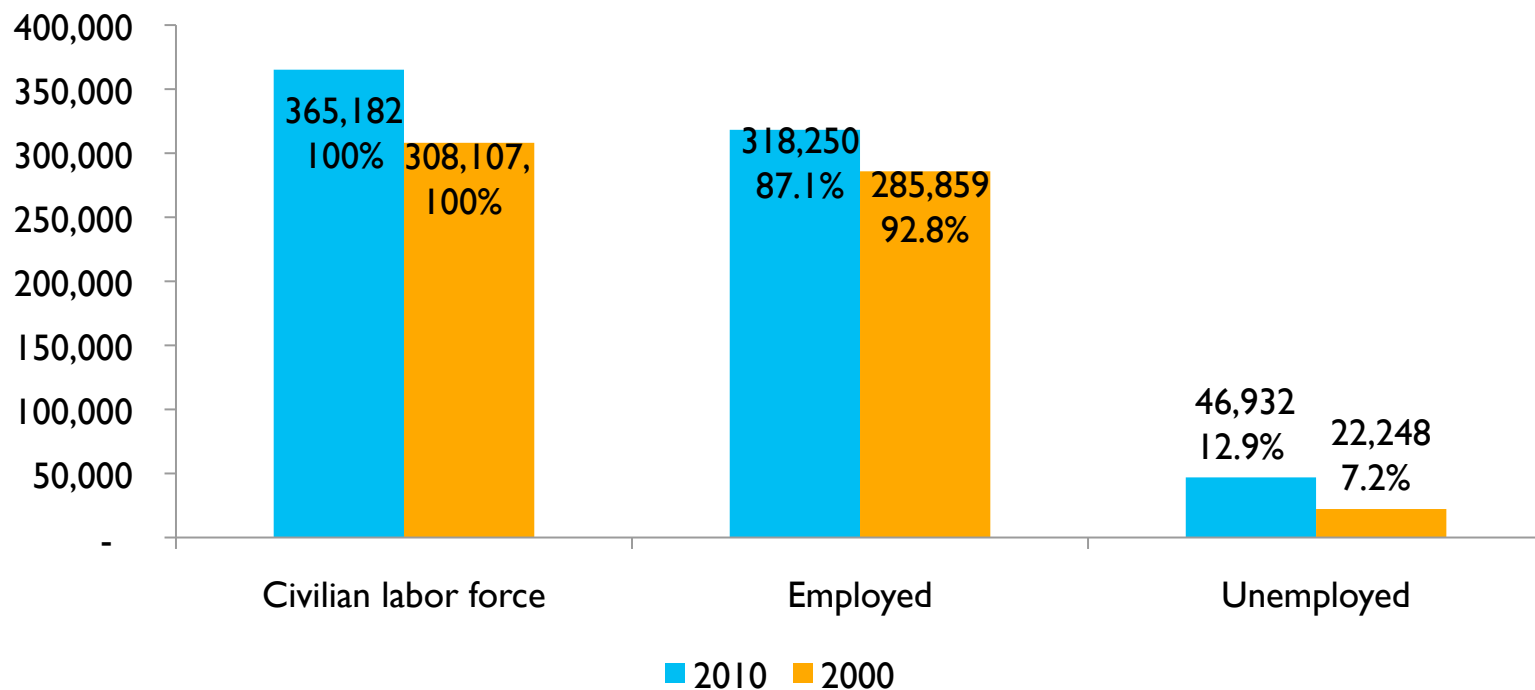
Household Income

- ▶ The distribution of income in Boston is more polarized than in 2000.
- ▶ The share of middle income households is getting smaller, while the share of low income and high income households increased.

Household Income (1999 Inflation-Adjusted Dollars)	2000		Location Quotient	Household Income (2009 Inflation-Adjusted Dollars)	2010 ACS		Location Quotient
	Estimate	Percent			Estimate	Percent	
Less than \$10,000	37,230	15.5%	1.63	Less than \$10,000	38,718	15.4%	2.08
\$10,000 to \$14,999	15,764	6.6%	1.04	\$10,000 to \$14,999	15,509	6.2%	1.11
\$15,000 to \$24,999	27,276	11.4%	0.89	\$15,000 to \$24,999	23,974	9.5%	0.88
\$25,000 to \$34,999	27,496	11.5%	0.90	\$25,000 to \$34,999	20,198	8.0%	0.75
\$35,000 to \$49,999	35,928	15.0%	0.91	\$35,000 to \$49,999	27,593	11.0%	0.77
\$50,000 to \$74,999	41,496	17.3%	0.89	\$50,000 to \$74,999	39,015	15.5%	0.83
\$75,000 to \$99,999	23,784	9.9%	0.97	\$75,000 to \$99,999	25,057	10.0%	0.81
\$100,000 to \$149,999	18,496	7.7%	1.00	\$100,000 to \$149,999	31,559	12.5%	1.03
\$150,000 to \$199,999	5,491	2.3%	1.04	\$150,000 to \$199,999	13,485	5.4%	1.29
\$200,000 or more	6,642	2.8%	1.17	\$200,000 or more	16,613	6.6%	1.65

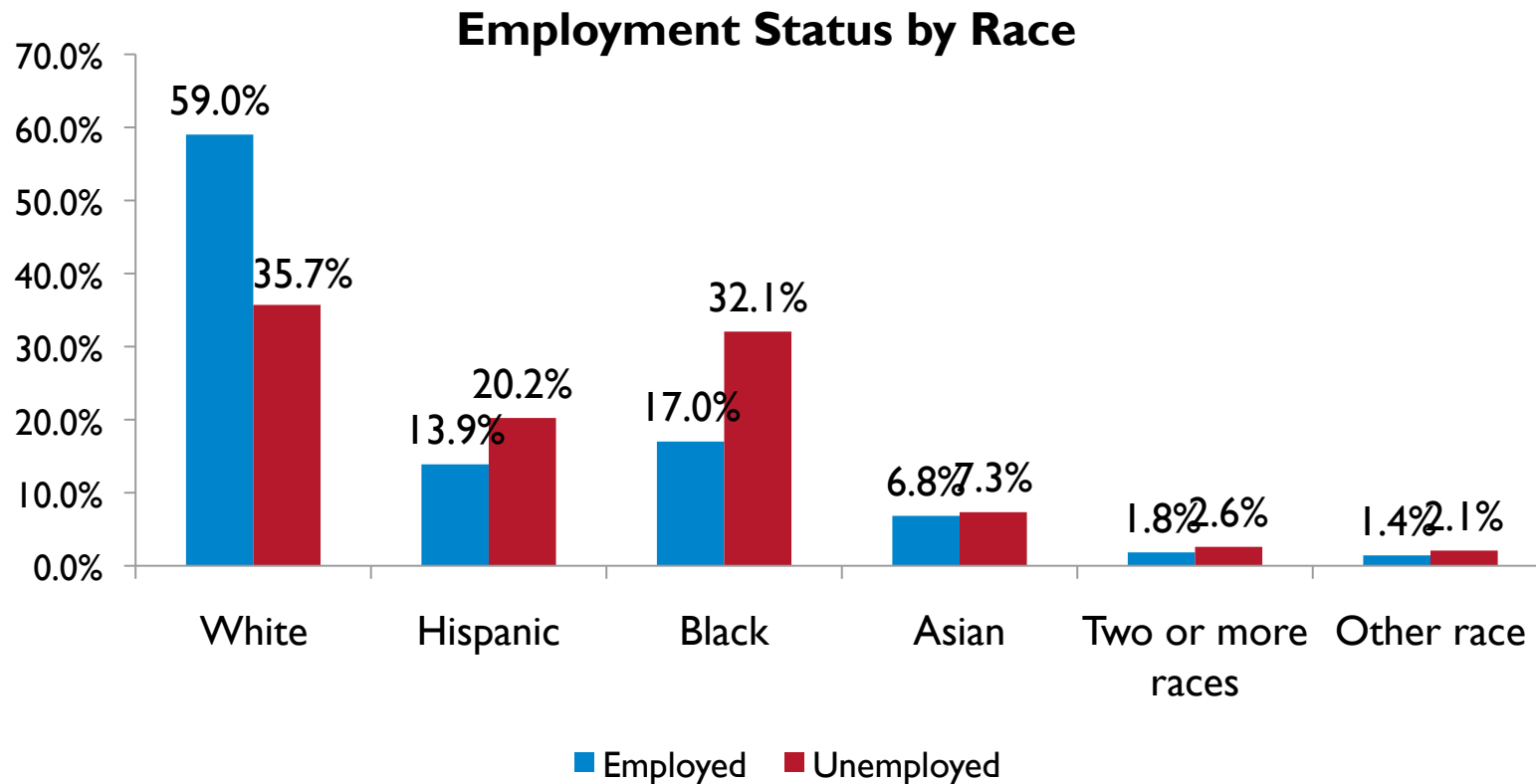
Employment

- ▶ Boston's labor force grew by 18.5% from 2000 to 2010
- ▶ Recessions in 2001 and 2008 has lead to the unemployed population in Boston to more than double in size since 2000



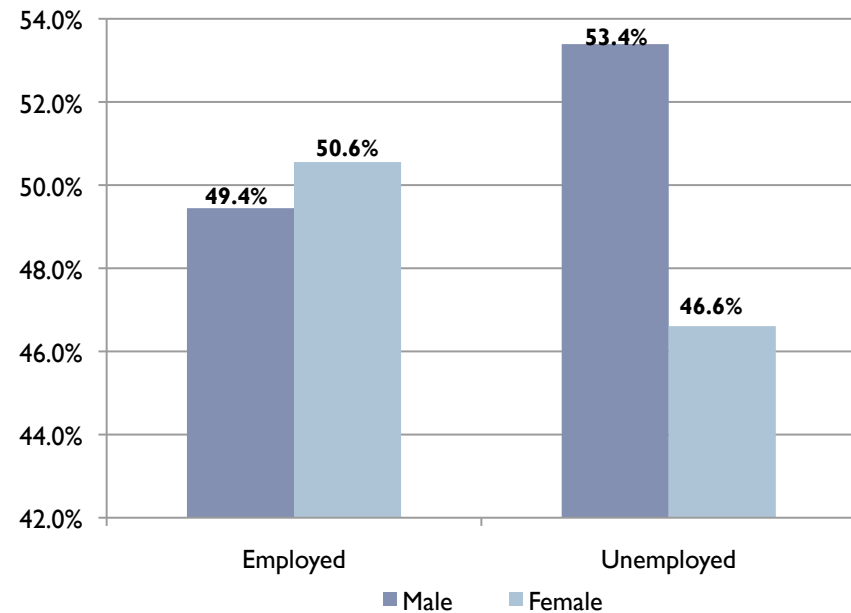
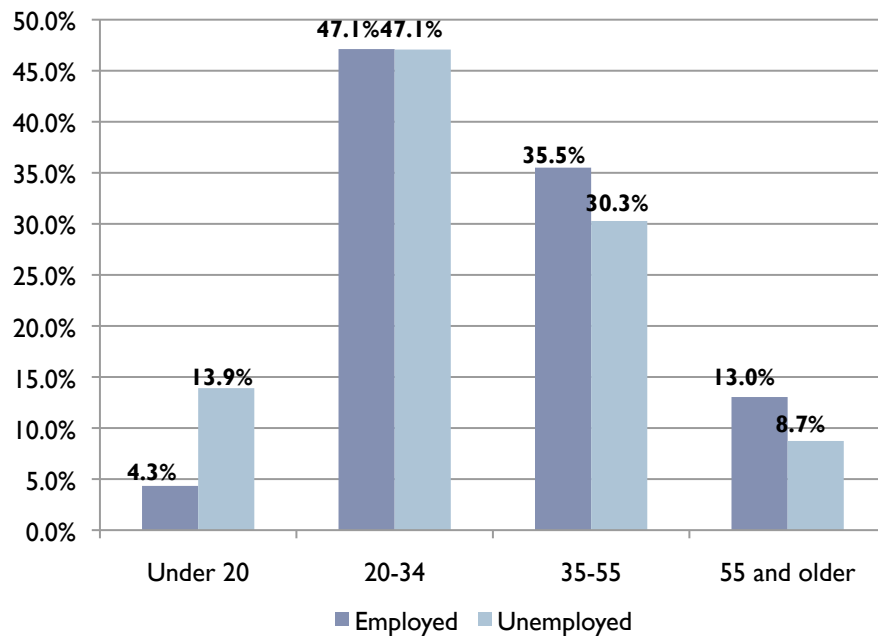
Labor Force Characteristics

- ▶ A greater percent of non-white residents are unemployed than white residents
- ▶ Unemployment appears to be particularly high among African-Americans in the city



Labor Force Characteristics

- ▶ Young workers make up a larger portion of the unemployed than they make up amongst the employed.
- ▶ The ratio of males to females that are employed is nearly 1:1; however, there are fewer unemployed females than unemployed males.



Unemployment Characteristics

Subject	Employed	Unemployed	Unemployment Rate
Male	157,163	17,152	9.8%
Female	160,690	14,973	8.5%
Under 20 Years	13,770	4,468	24.5%
20 to 34 Years	149,778	15,123	9.2%
35 to 54 Years	112,861	9,728	7.9%
55 Years+	41,444	2,806	6.3%
Less than High School	30,498	6,981	18.6%
High School	60,085	9,434	13.6%
Some College	58,767	7,894	11.8%
Associate's Degree	15,069	1,223	7.5%
Bachelor's Degree	91,624	4,806	5.0%
Graduate Degree	61,810	1,787	2.8%
White	175,845	10,046	5.4%
Hispanic	46,747	6,715	12.6%
Black	59,432	11,560	16.3%
Asian	26,231	2,586	9.0%
Two or More Races	4,404	640	12.7%
Other Race	5,194	578	10.0%

Planning District Characteristics

Unemployment by Planning District	2006 - 2010 ACS		2000 Census	
	Unemployment Rate	Poverty Status	Unemployment Rate	Poverty Status
Boston	7.9%	15.0%	7.2%	19.5%
Allston-Brighton	4.9%	23.1%	5.3%	23.0%
Back Bay-Beacon Hill	3.5%	11.4%	6.0%	10.3%
Central	4.8%	18.9%	8.9%	16.9%
Charlestown	5.5%	16.8%	4.1%	17.5%
East Boston	9.4%	15.0%	7.3%	19.5%
Fenway-Kenmore	11.1%	38.3%	11.4%	37.3%
Hyde Park	10.3%	11.0%	5.5%	10.4%
Jamaica Plain	5.1%	14.3%	5.5%	20.9%
Mattapan	15.0%	22.7%	9.7%	22.3%
North Dorchester	11.8%	26.7%	9.6%	20.8%
Roslindale	8.8%	14.0%	4.9%	13.6%
Roxbury	17.7%	32.3%	11.6%	27.1%
South Boston	5.6%	17.8%	5.0%	17.3%
South Dorchester	14.7%	19.9%	7.9%	17.3%
South End	12.3%	30.5%	6.9%	23.9%
West Roxbury	6.3%	5.6%	3.0%	6.4%

The BRA Research Division has put together profiles of Boston's Planning Districts, Neighborhoods, City Council Districts, and Wards, which can all be found here:

<http://www.bostonredevelopmentauthority.org/Research/Research.asp>

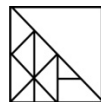
For more information from the US Census Bureau, please visit:

<http://www.census.gov>

Thank you.



CITY OF BOSTON
Thomas M. Menino
Mayor



Boston
Redevelopment
Authority