

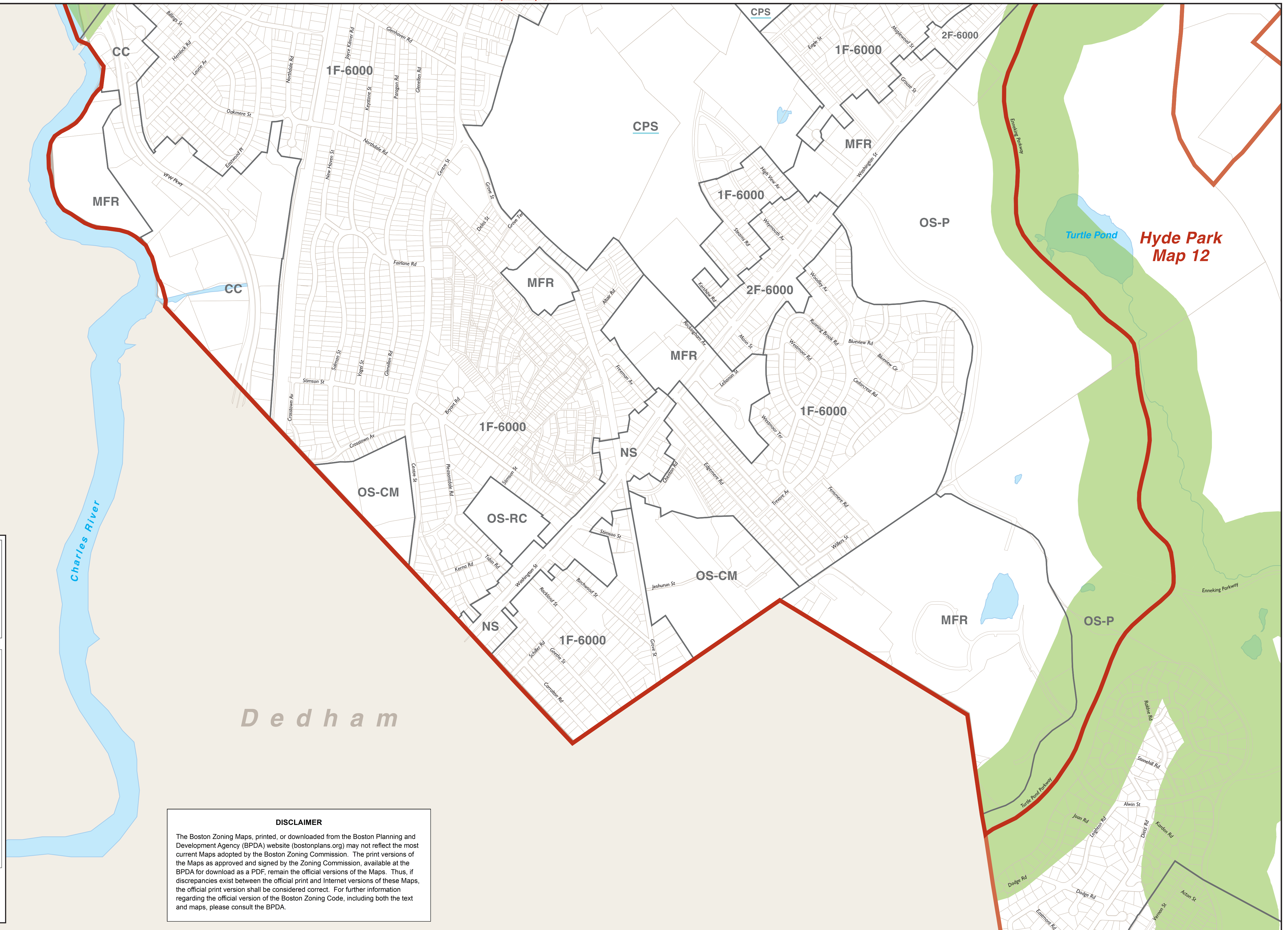
Zoning Districts City of Boston
Map 11E
West Roxbury Neighborhood District
 (Replacing "Map 11, West Roxbury")

Adopted by the
 Zoning Commission of the City of Boston
 in meeting on August 18, 1994

Richard B. Fowler
 Chairman
 Effective: August 23, 1994
 Date of public notice June 29, 1994
 (See St. 1956, c. 665, s.5)

As amended

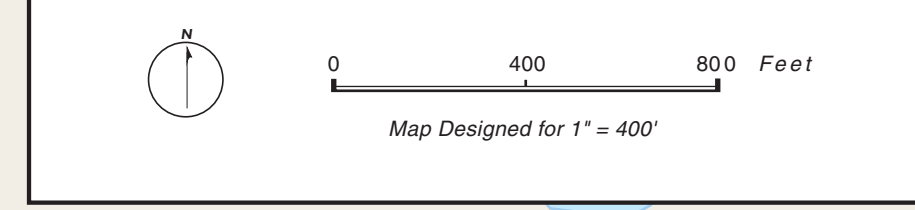
Effective: September 19, 2003
 Public Notice: August 25, 2003



- West Roxbury Neighborhood District Boundary
- District Boundary
- Subarea Boundary
- Greenbelt Protection Overlay District (See Section 56-26)
- PDA Permitted

- Residential Subdistricts**
- 1F One-Family Residential Subdistrict
 - 2F Two-Family Residential Subdistrict
 - MFR Multifamily Residential Subdistrict
- Conservation Protection Subdistrict**
- CPS Conservation Protection Subdistrict
- Open Space Districts**
- OS Open Space District
 - OS-CM Cemetery Open Space Subdistrict
 - OS-P Parkland Open Space Subdistrict
 - OS-RC Recreation Open Space Subdistrict
 - OS-UW Urban Wild Open Space Subdistrict
- Neighborhood Business Subdistricts**
- NS Neighborhood Shopping Subdistrict
 - CC Community Commercial Subdistrict
 - CF Community Facilities Subdistrict
 - LI Local Industrial Subdistrict
 - NI Neighborhood Institutional Subdistrict

For maximum allowed Height, FAR, and other provisions, see Article 56.



DISCLAIMER

The Boston Zoning Maps, printed, or downloaded from the Boston Planning and Development Agency (BPDA) website (bostonplans.org) may not reflect the most current Maps adopted by the Boston Zoning Commission. The print versions of the Maps as approved and signed by the Zoning Commission, available at the BPDA for download as a PDF, remain the official versions of the Maps. Thus, if discrepancies exist between the official print and Internet versions of these Maps, the official print version shall be considered correct. For further information regarding the official version of the Boston Zoning Code, including both the text and maps, please consult the BPDA.