

The Hub on Causeway

BCDC SUBMISSION

OFFICE TOWER

MAY 1, 2018



WHERE WE WERE: MARCH 6



WHAT WE HEARD

1 PROPORTIONS

STRIVING TO BE TALLER

- Unify mid-rise with upper tower
- Extend reading of tower to land on Podium
- Reduce SW cantilever over the Hub and Podium
- Minimize width of tower

2 IDENTITY

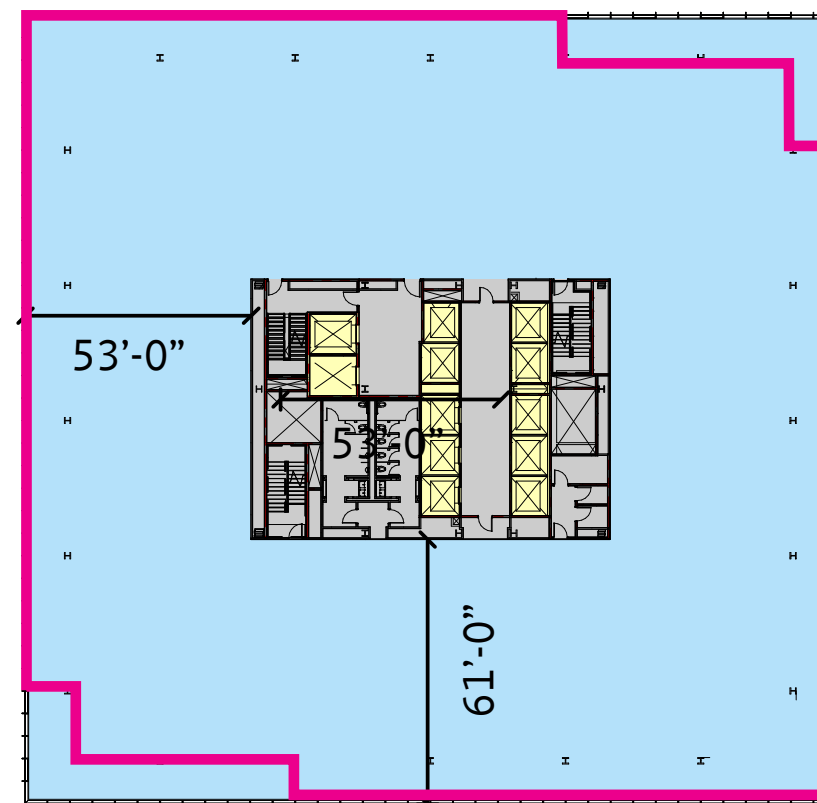
MODERN MACHINE

- Contextualize
- Texture and materiality
- Hat truss design



NOW





TYPICAL FLOOR

- CORE
- CORE CIRCULATION
- OFFICE
- BALCONY
- AMENITY





VIEW FROM CAUSEWAY



VIEW FROM CANAL LOOKING WEST



LEASE
ONE CANAL

ONE CANAL APARTMENT HOMES

H.T. B...

VIEW FROM GREENWAY



VIEW FROM ZAKIM BRIDGE



VIEW FROM ZAKIM BRIDGE



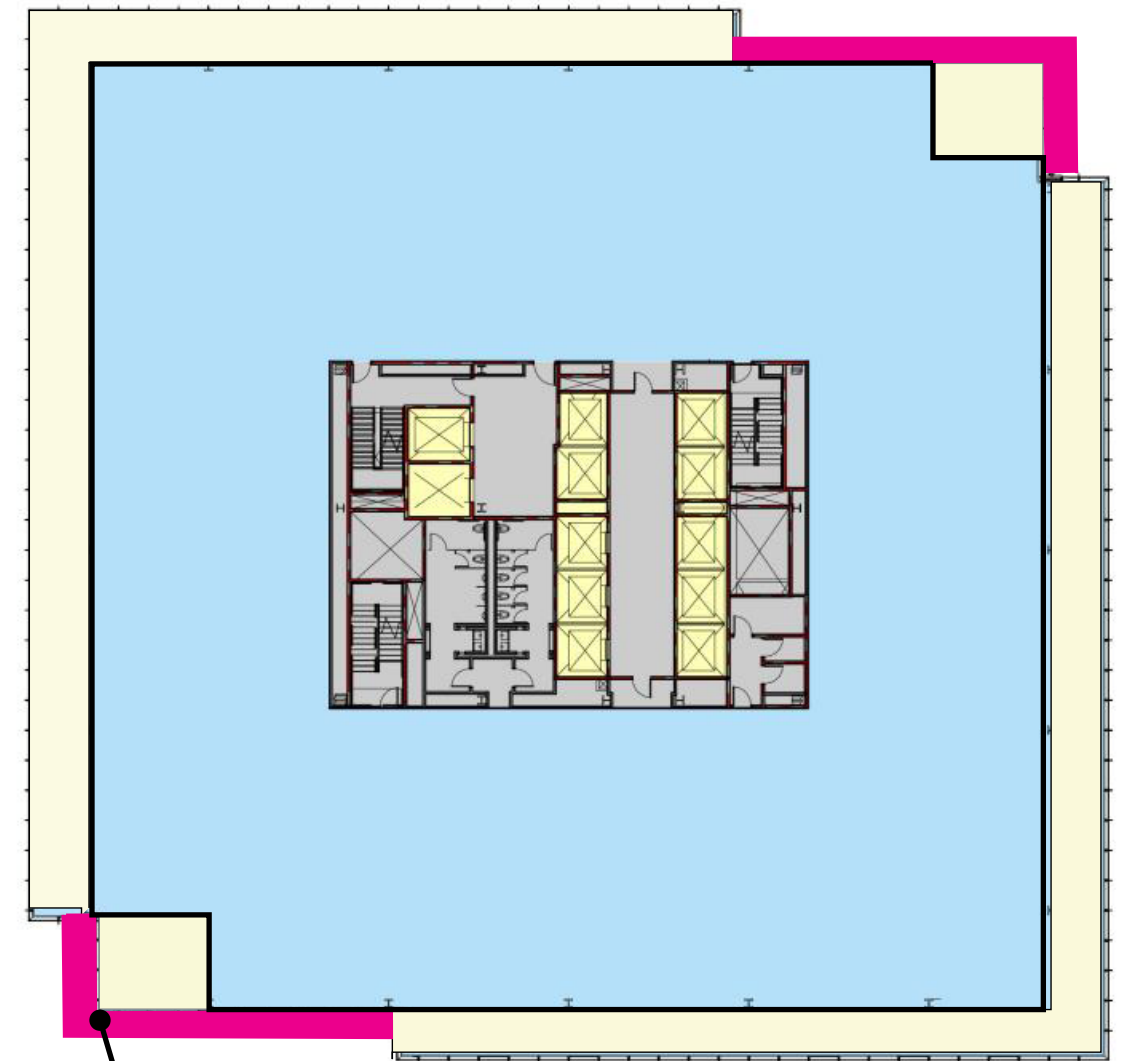
CONVERSE

CONVERSE

CONNECTION AT TERRACE CONCEPT 1



CLOSE UP VIEW FROM 93



LEVEL 15

6' WIDE EXTENSION TO CONNECT TERRACES

CONNECTION AT TERRACE CONCEPT 1



VIEW FROM CANAL



VIEW FROM 93

CONNECTION AT TERRACE CONCEPT 1



VIEW FROM CAUSEWAY
LOOKING EAST

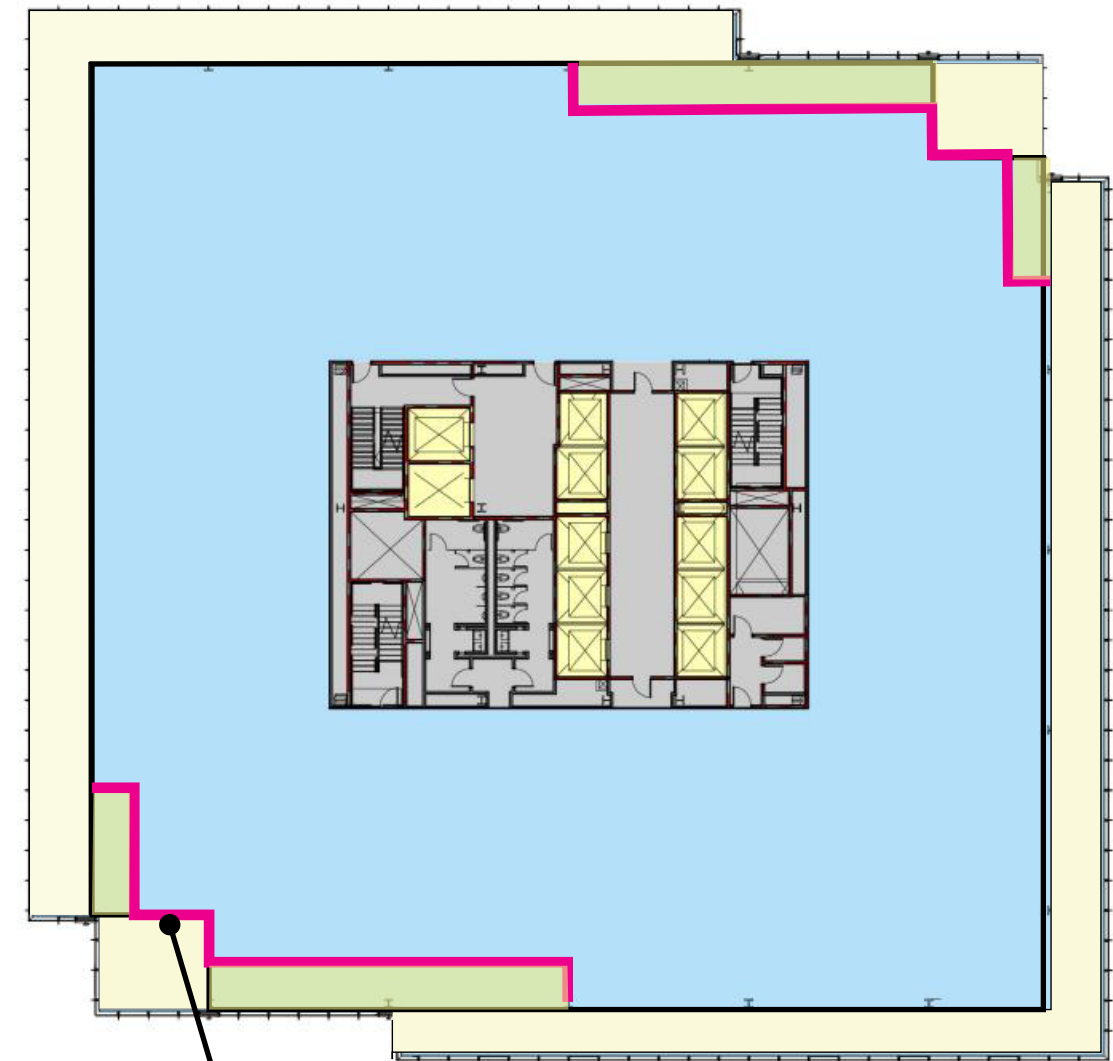


VIEW FROM CAUSEWAY
LOOKING WEST

CONNECTION AT TERRACE CONCEPT 2



CLOSE UP VIEW FROM 93



LEVEL 15

GLAZING MOVED IN TO MAKE CONNECTION AT TERRACE

CONNECTION AT TERRACE CONCEPT 2



VIEW FROM CANAL



VIEW FROM 93

CONNECTION AT TERRACE CONCEPT 2



VIEW FROM CAUSEWAY
LOOKING EAST



VIEW FROM CAUSEWAY
LOOKING WEST

CONNECTION AT TERRACE



CONCEPT 1



CONCEPT 2

An architectural rendering of a modern skyscraper complex. The main building is a tall, glass-clad tower with a distinctive top section featuring a series of triangular structural elements. The base of the building is a multi-story structure with a large glass facade and a prominent '100' sign. The surrounding area includes other buildings, a street with cars, and a highway with traffic. The sky is overcast.

THANK YOU!