

PARCEL P-12C

288-298 TREMONT STREET

BCDC
11.06.2019



MILLENNIUM BOSTON



AGENDA

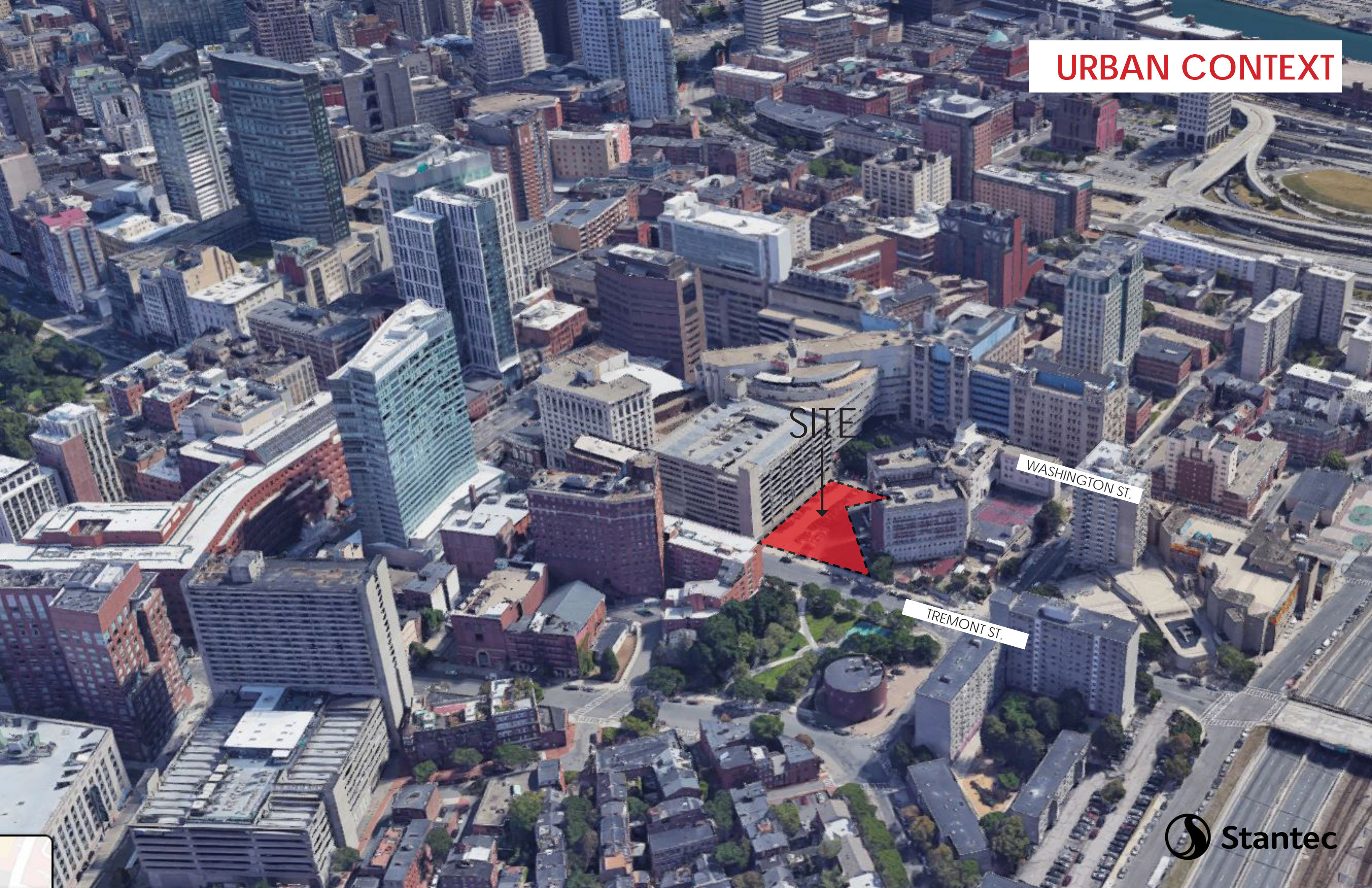
A. INTRODUCTION

B. BUILDING DESIGN

C. LANDSCAPE/ URBAN DESIGN



URBAN CONTEXT



SITE

WASHINGTON ST.

TREMONT ST.

EXISTING CONDITION FROM TREMONT ST.



PROJECT PROGRAM

RESIDENTIAL
UP TO 171 UNITS

HOTEL
MAXIMUM 200 KEYS

COMMUNITY SPACE
LIBRARY

ENTRANCE
LIBRARY/COMMUNITY SPACE

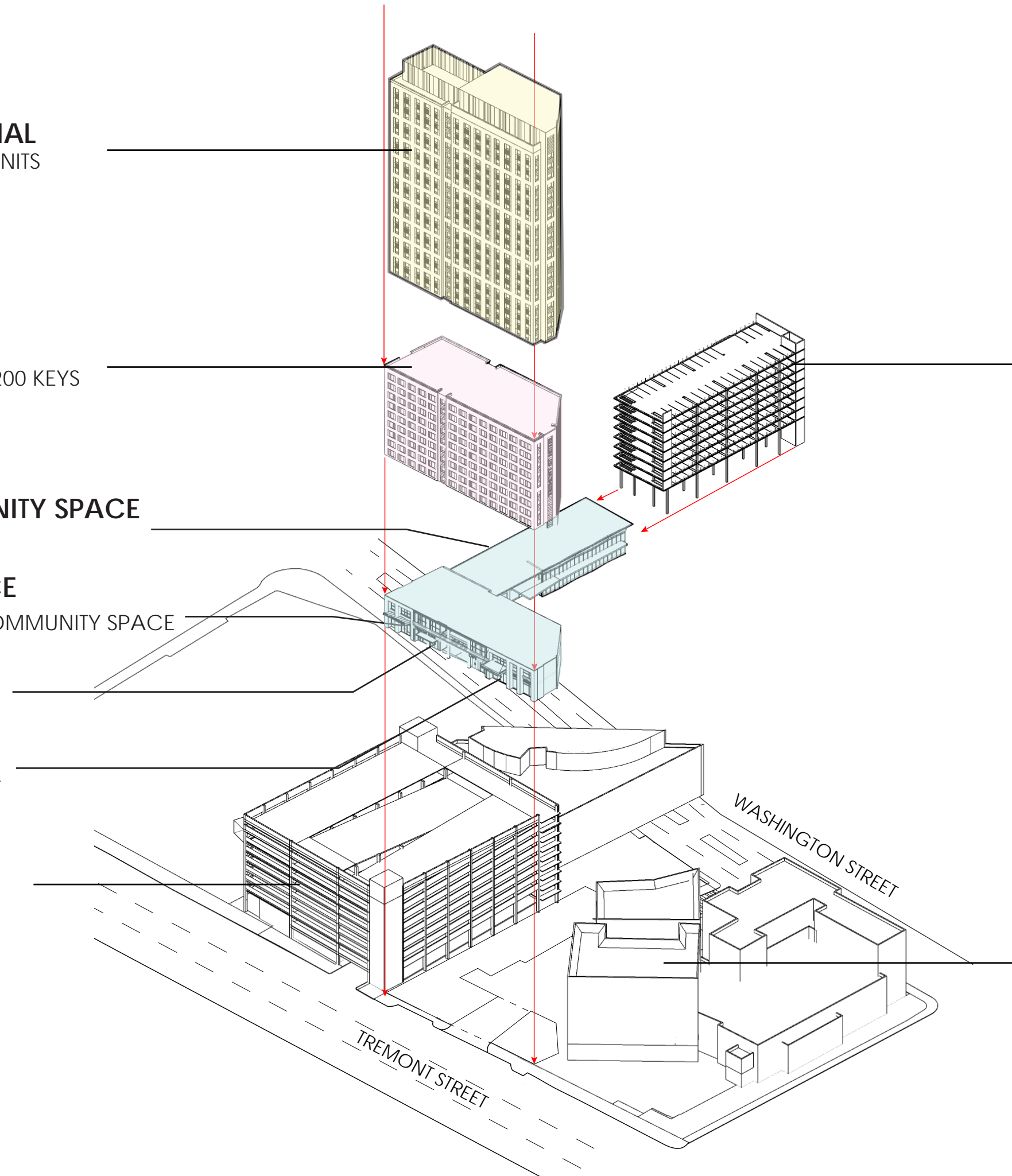
LOBBY
HOTEL

LOBBY
RESIDENTIAL

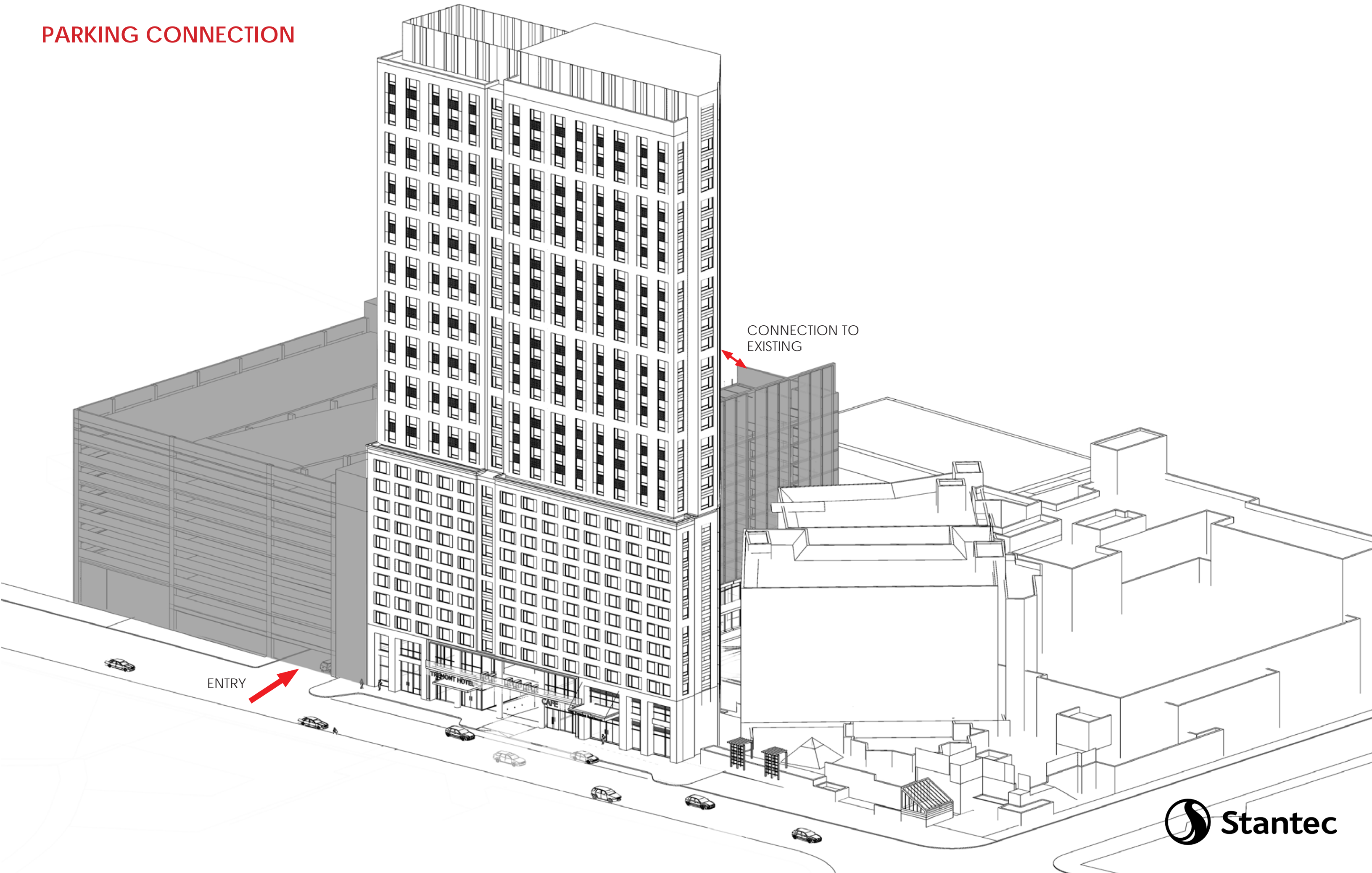
EXISTING
GARAGE

PARKING/GARAGE
EXPANSION
Up to 340 SPACES

EXISTING HOTEL



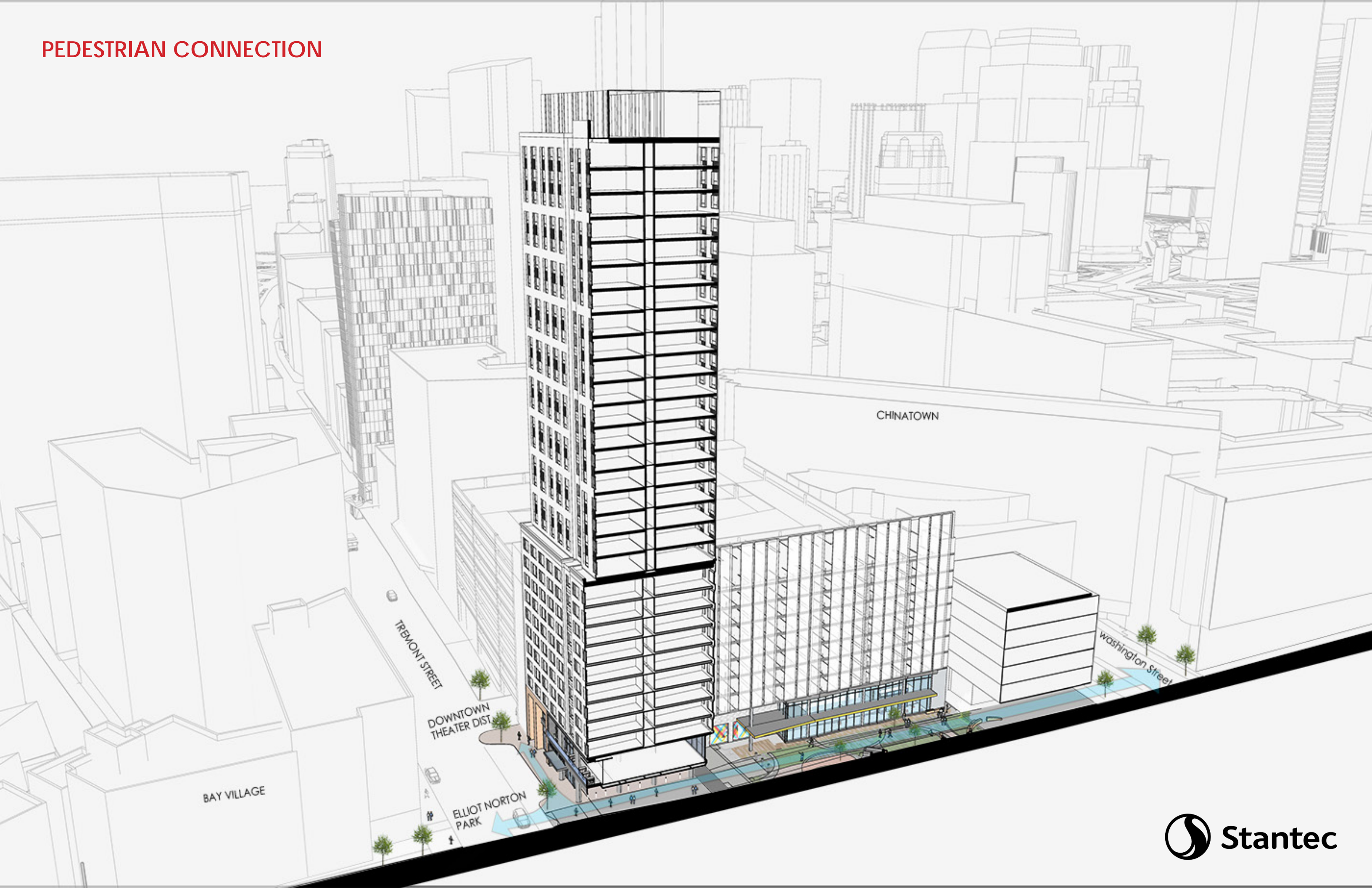
PARKING CONNECTION



ENTRY

CONNECTION TO EXISTING

PEDESTRIAN CONNECTION

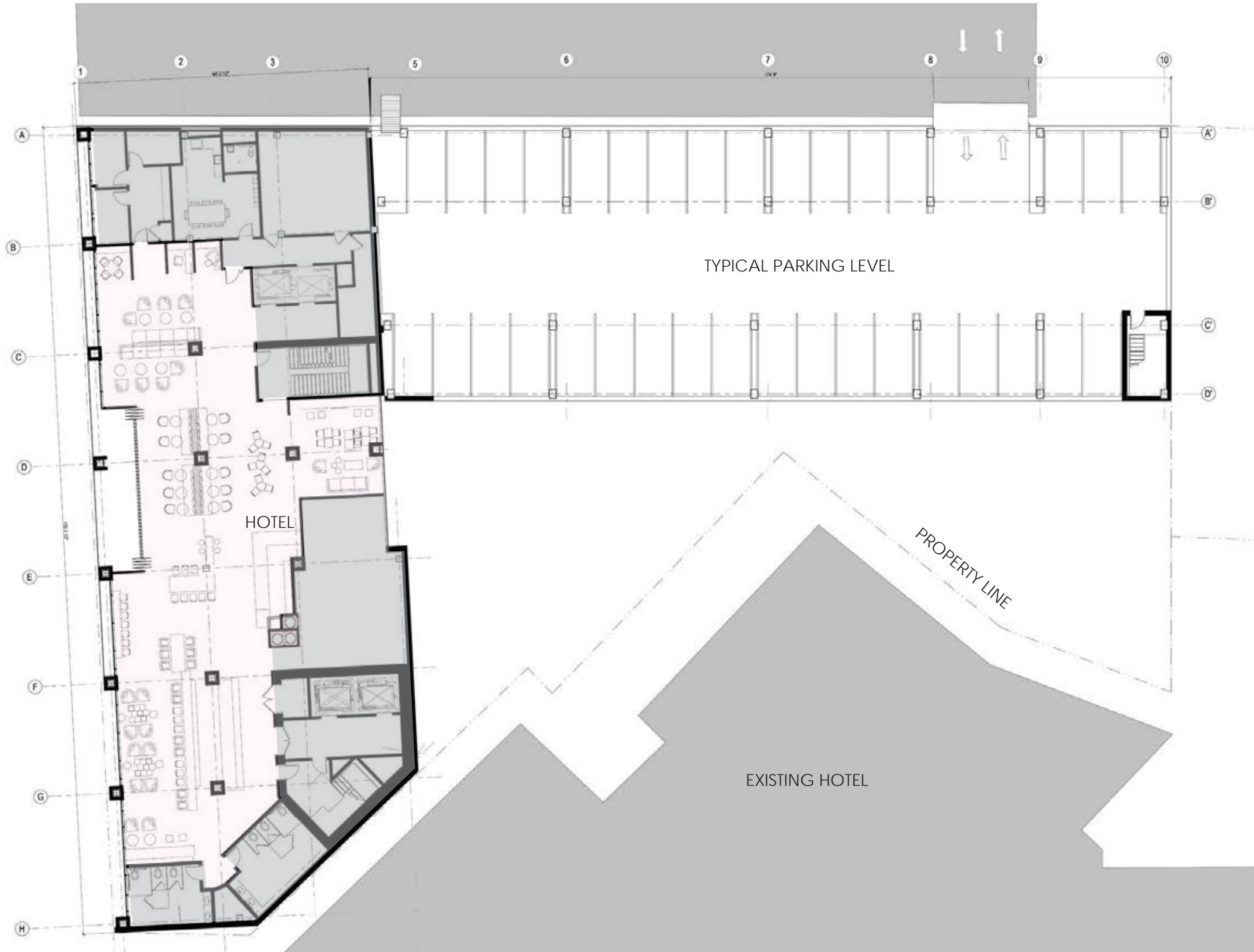


LEVEL 01 FLOOR PLAN



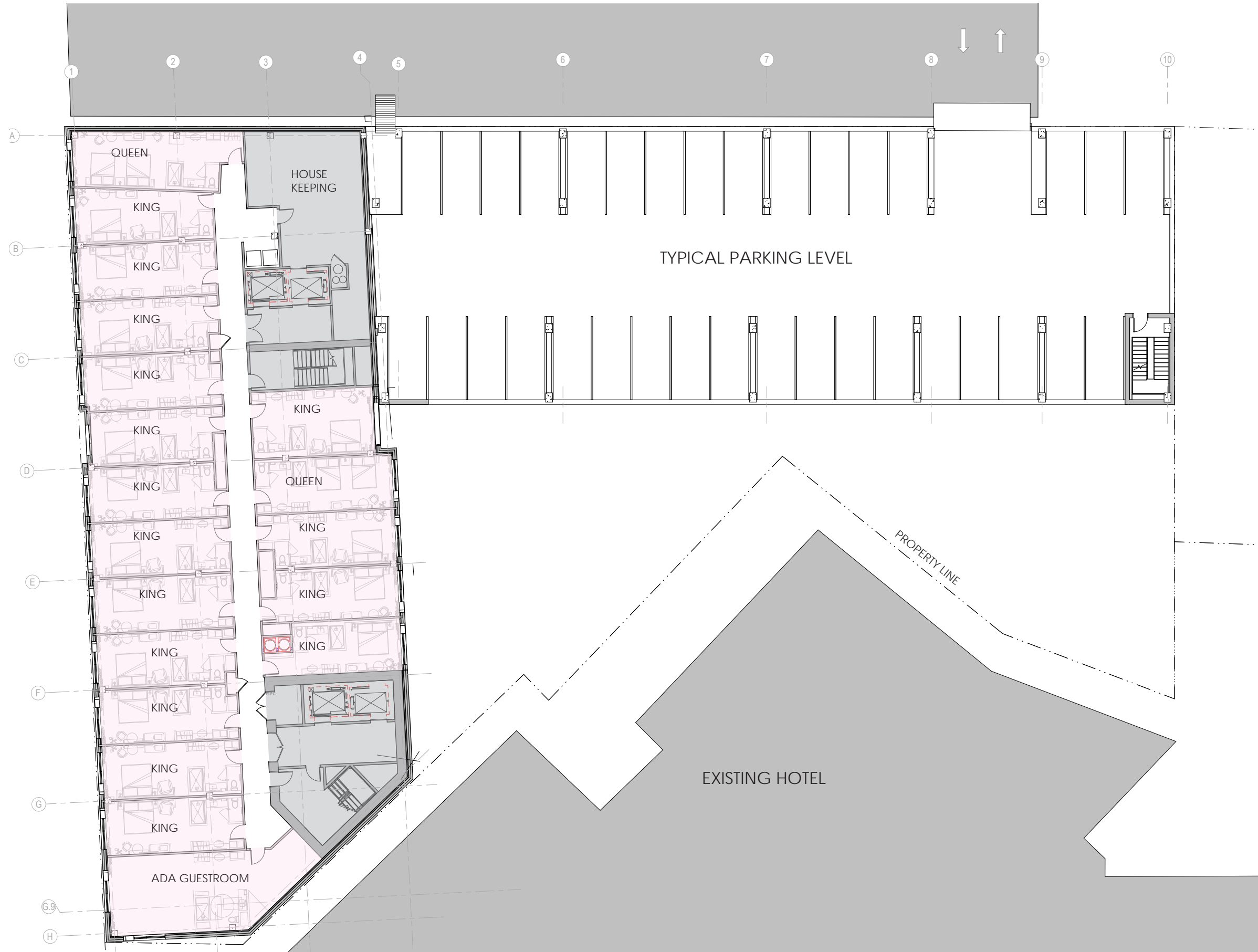
-  HOTEL
-  CAFE
-  RESIDENTIAL
-  LIBRARY

LEVEL 02 FLOOR PLAN



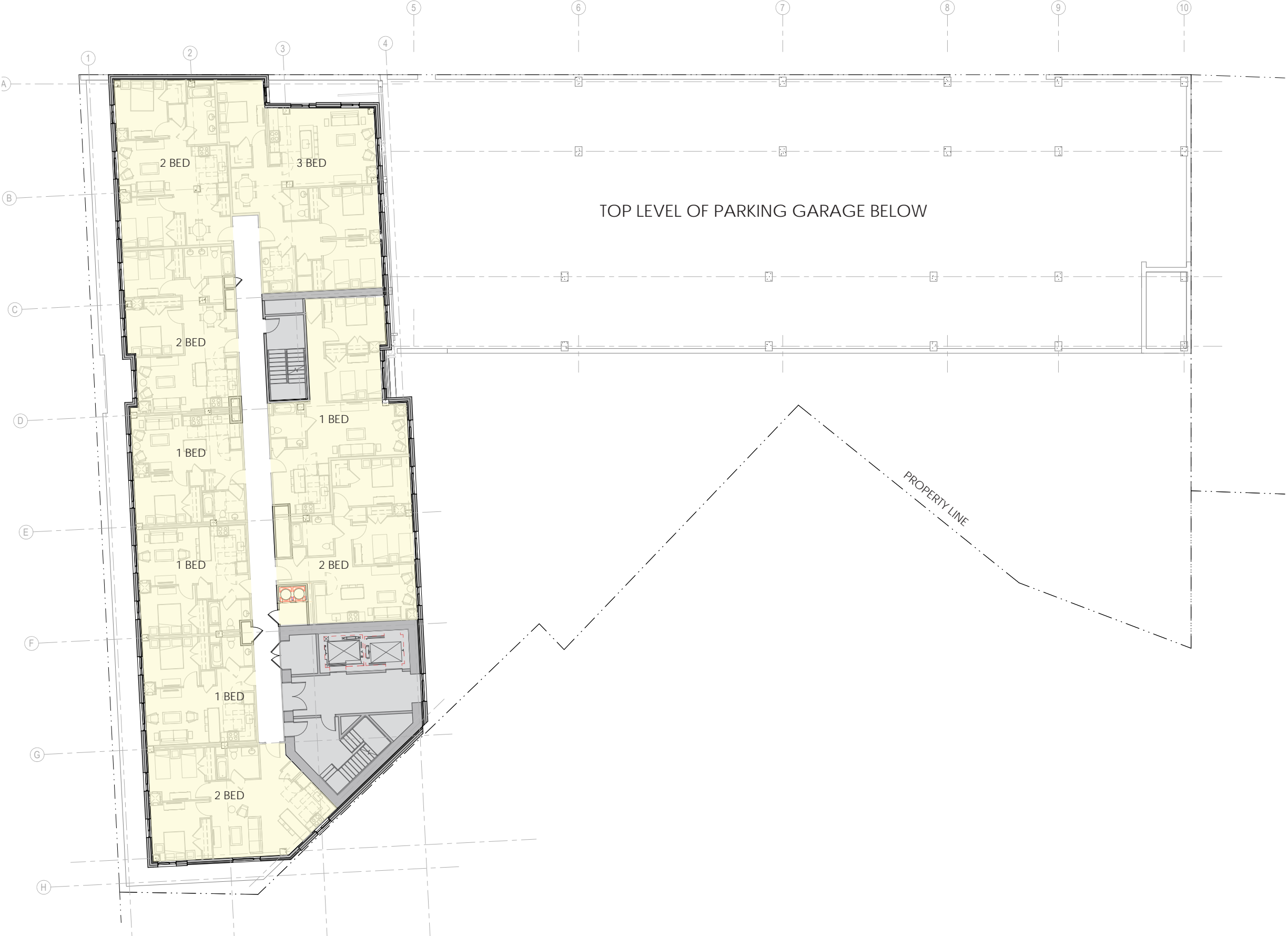
-  HOTEL
-  CAFE
-  RESIDENTIAL
-  LIBRARY

HOTEL FLOOR PLAN



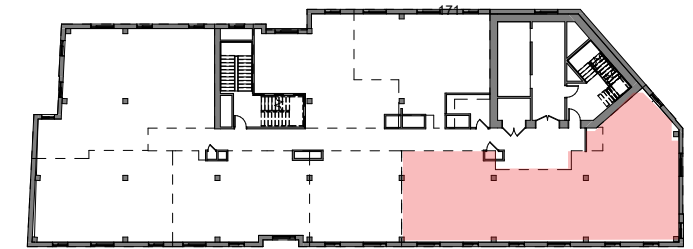
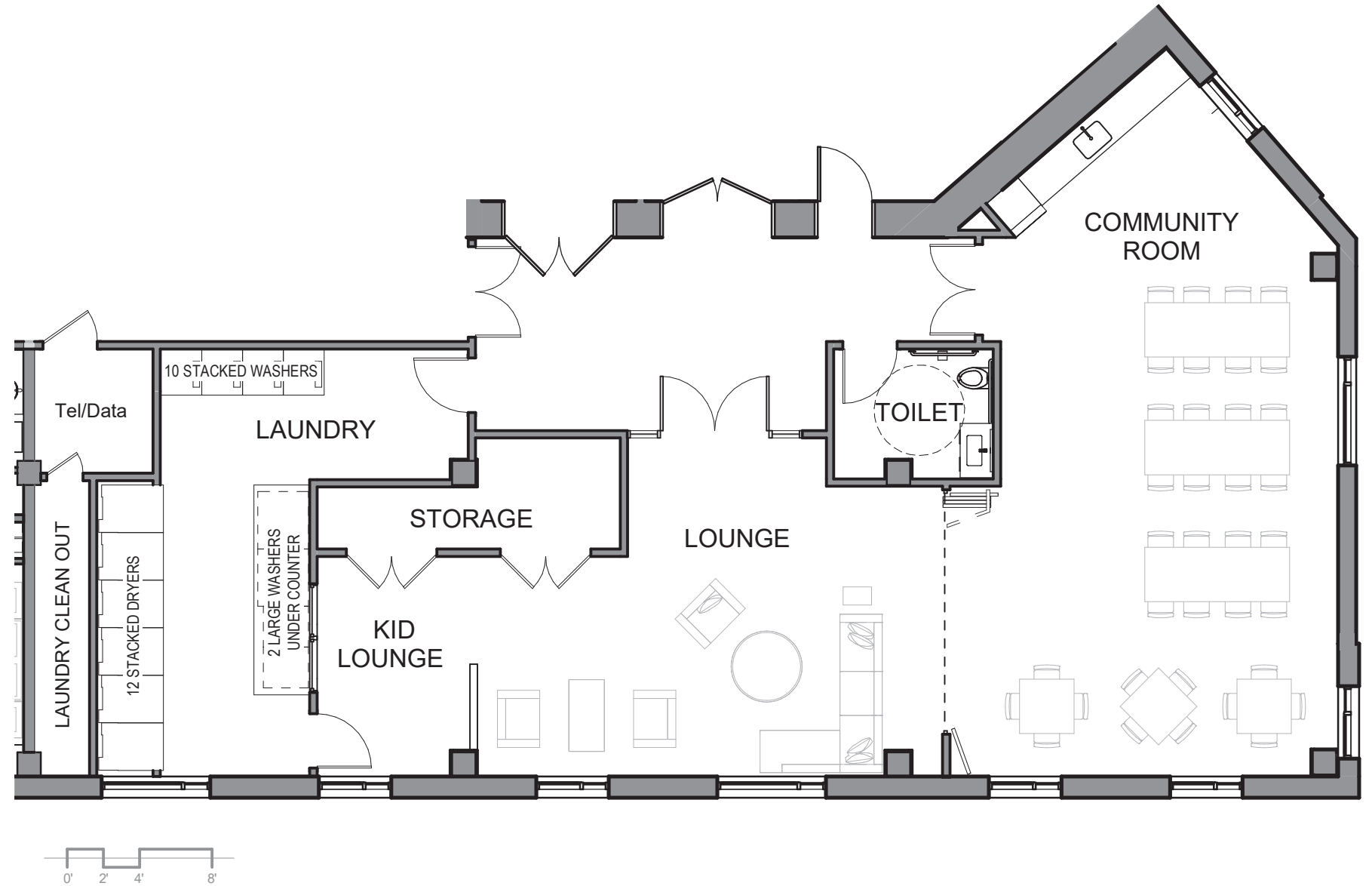
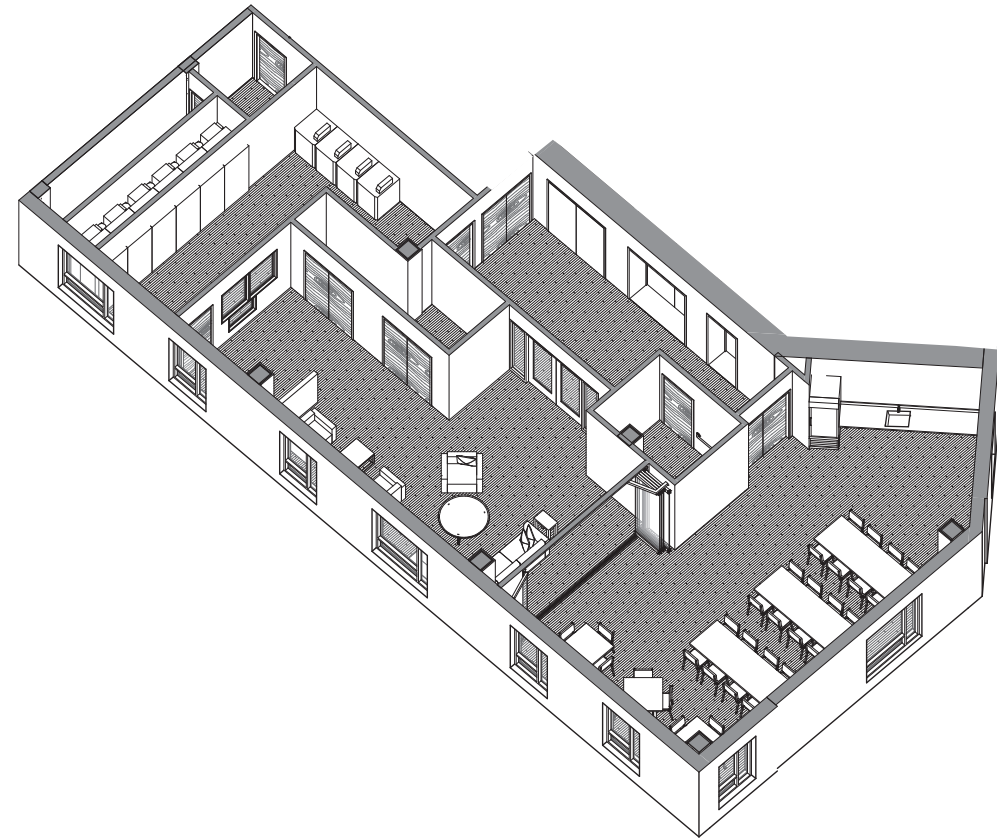
- HOTEL
- CAFE
- RESIDENTIAL
- LIBRARY

TYPICAL RESIDENTIAL FLOOR PLAN



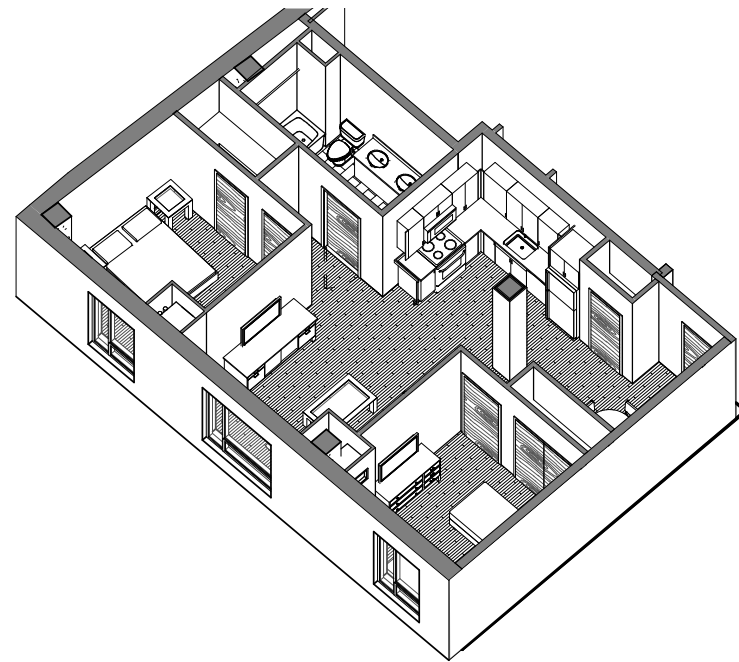
- HOTEL
- CAFE
- RESIDENTIAL
- LIBRARY

UPPER LEVEL AMENITY

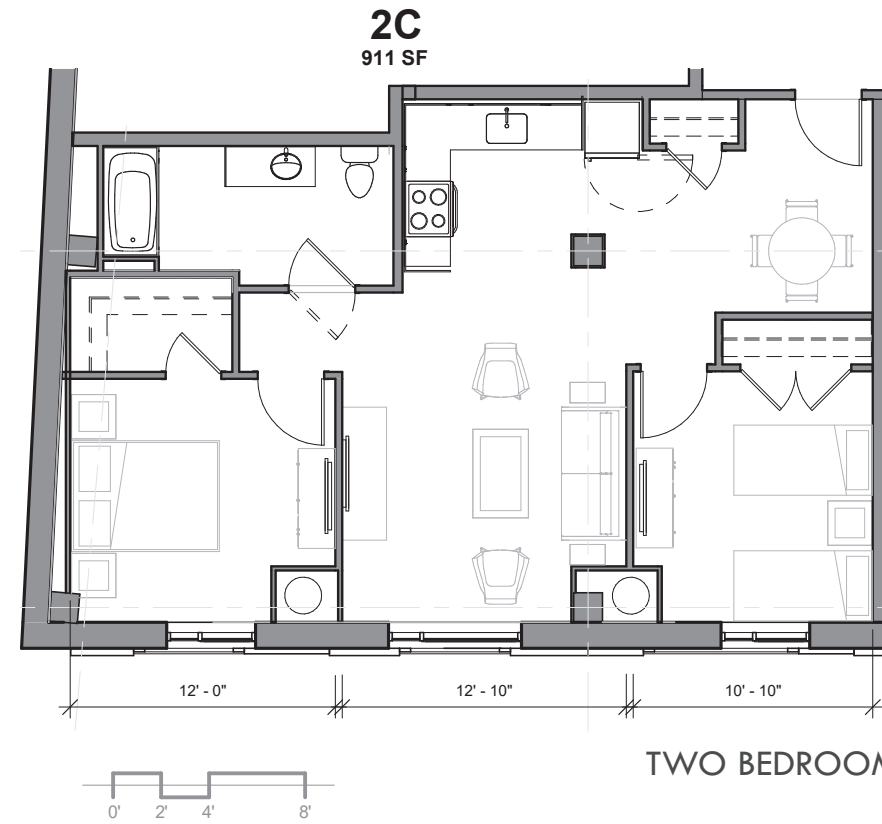


KEY PLAN
FLOOR TWELVE

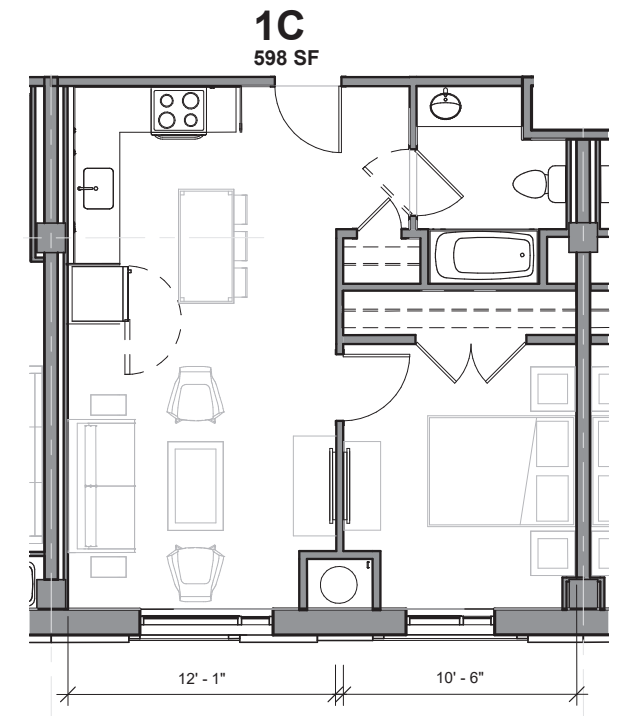
TYPICAL UNIT - RENTAL



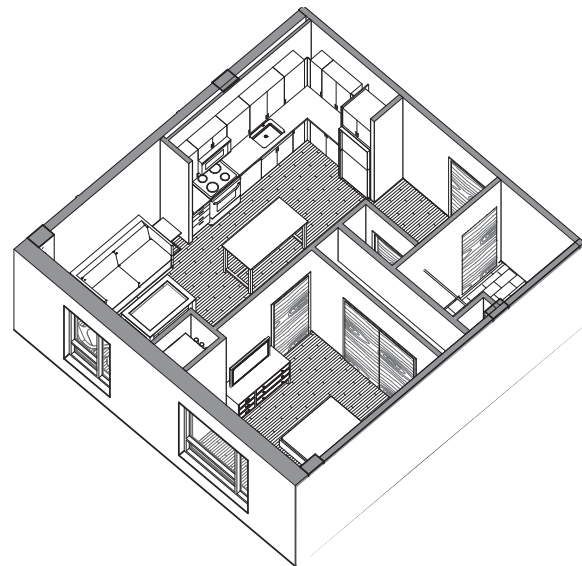
TWO BEDROOM



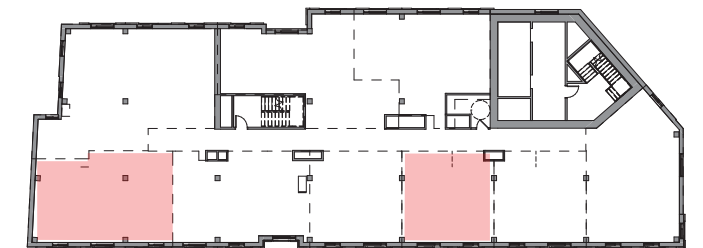
TWO BEDROOM



ONE BEDROOM

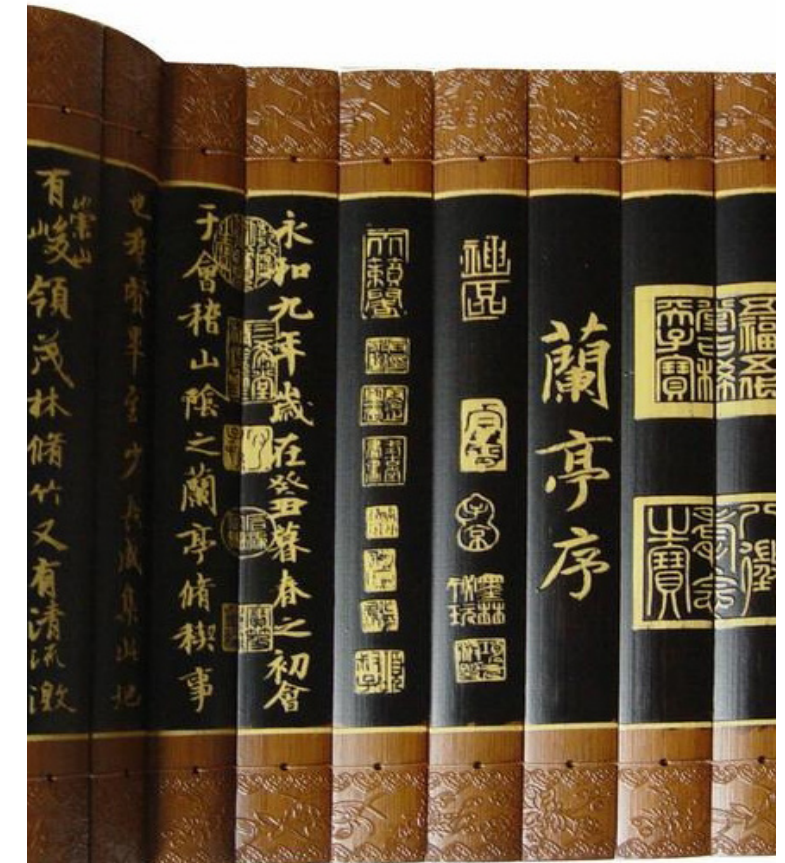


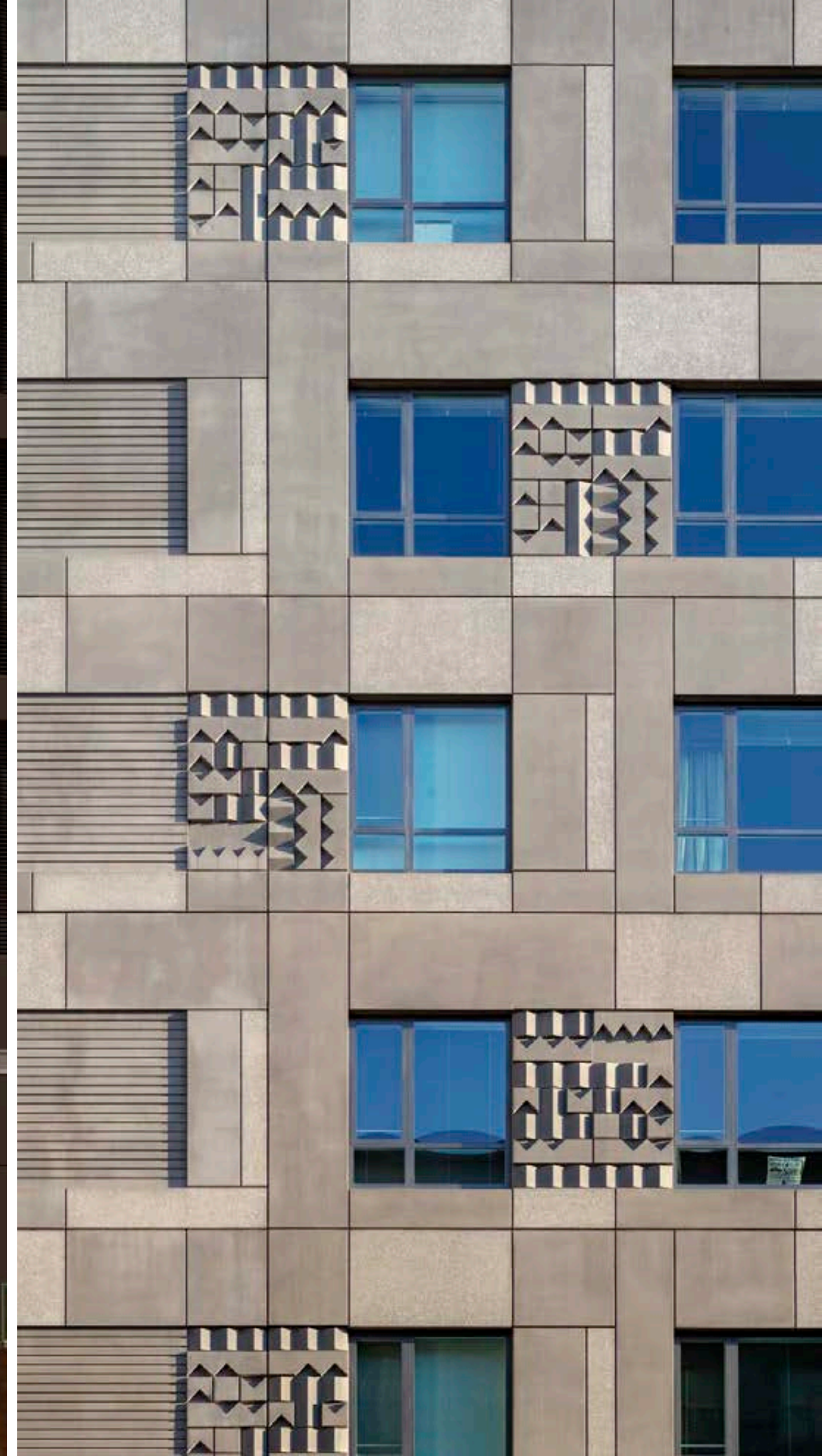
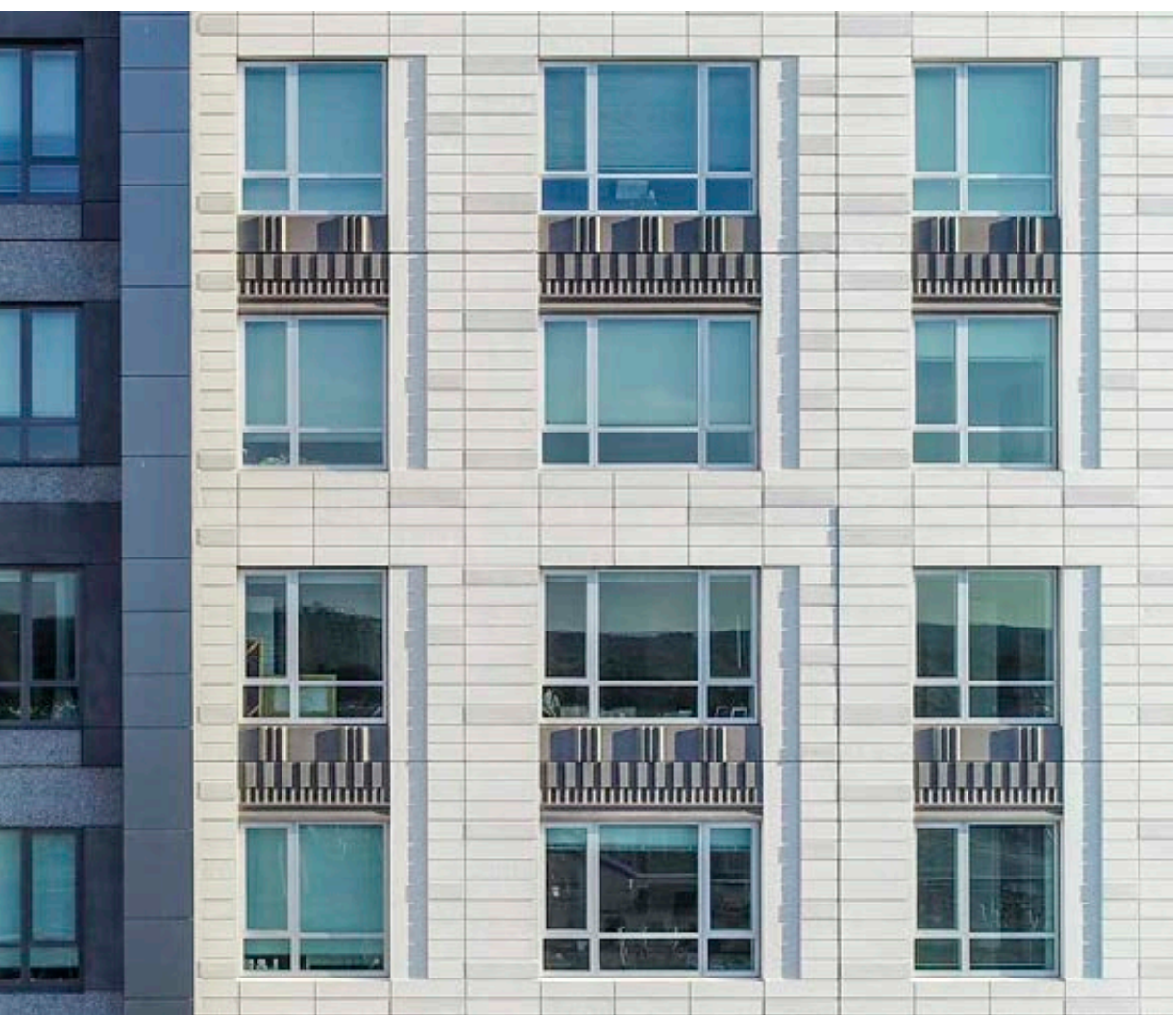
ONE BEDROOM



KEY PLAN
TYPICAL RESIDENTIAL FLOOR

DESIGN CONCEPT: BAMBOO SLIPS











MONT HOTEL

CA



VIEW FROM TREMONT STREET LOOKING TOWARDS THE INNER COURTYARD



BOSTON
PUBLIC
LIBRARY
CHINATOWN



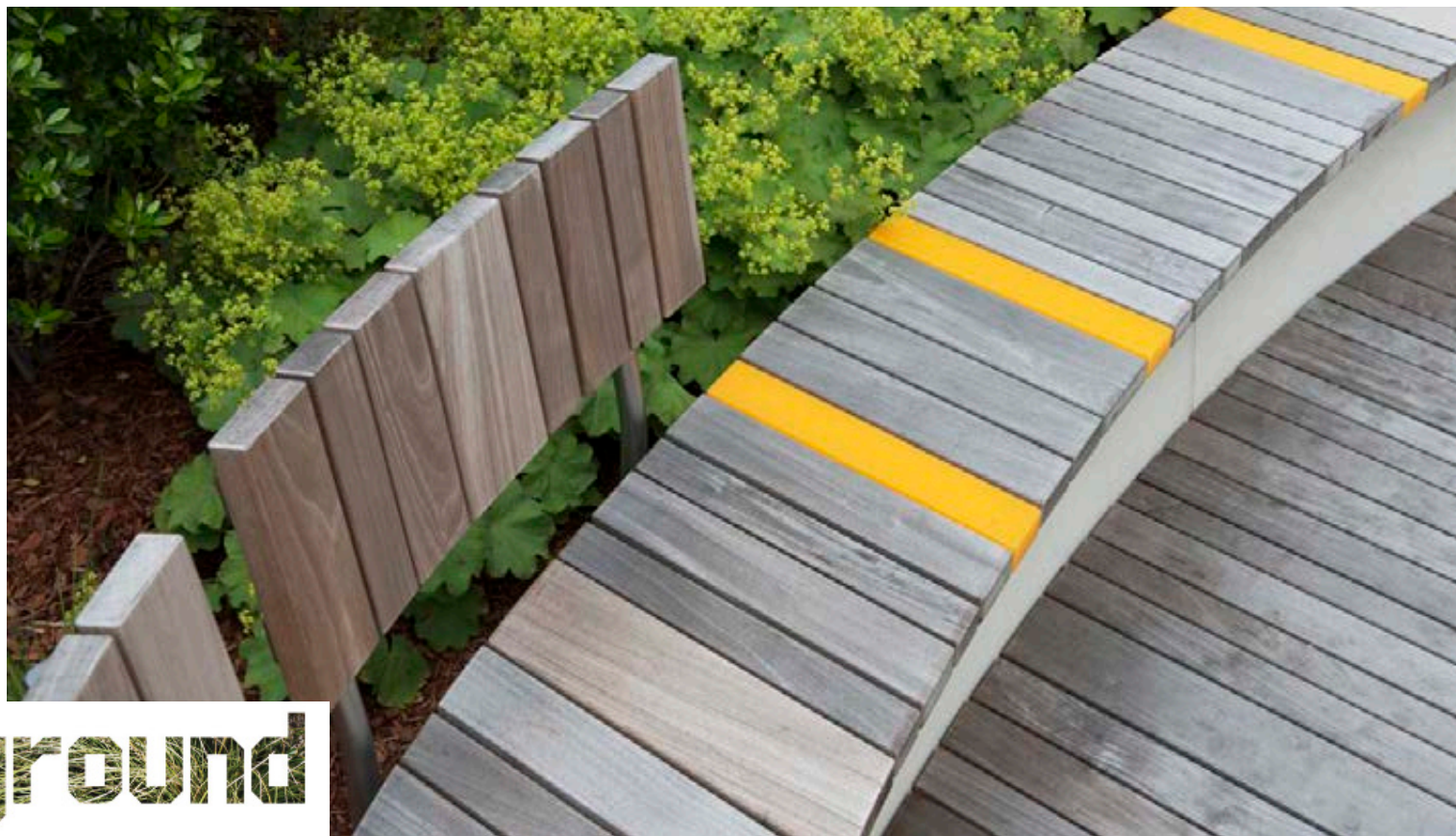


BPL

INATOWN

TREMONT HOTEL

MOON GATE



SITE PLAN_DAY 1



SITE PLAN_ FUTURE CONDITION







PLEASANT STREET PORTAL IN 1901



LOOKING SOUTH AT THE FLYING JUNCTION APPROACHING THE PORTAL

ABANDONED PLEASANT STREET INCLINE FOR THE TREMONT STREET SUBWAY IN 1901

EXISTING PARKING GARAGE

PARCEL'S PROPERTY LINE

STATION AND PLATFORM OUTLINE OF TUFTS MEDICAL CENTER STATION

EXISTING HOTEL

EXISTING YMCA

OAK STREET W

(ONE-WAY) TREMONT STREET

WASHINGTON STREET