

Zoning Districts City of Boston
Map 1M
Audubon Circle Neighborhood District

Adopted by the
Zoning Commission of the City of Boston
in meeting on March 25, 1998

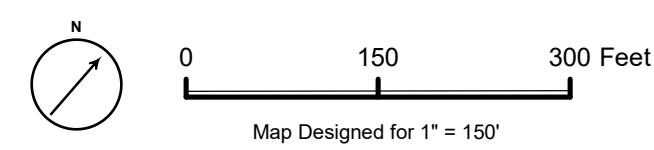
Robert L. Man
Chairman

As amended
Effective: June 9, 2021
Public Notice: June 15, 2021

Brookline

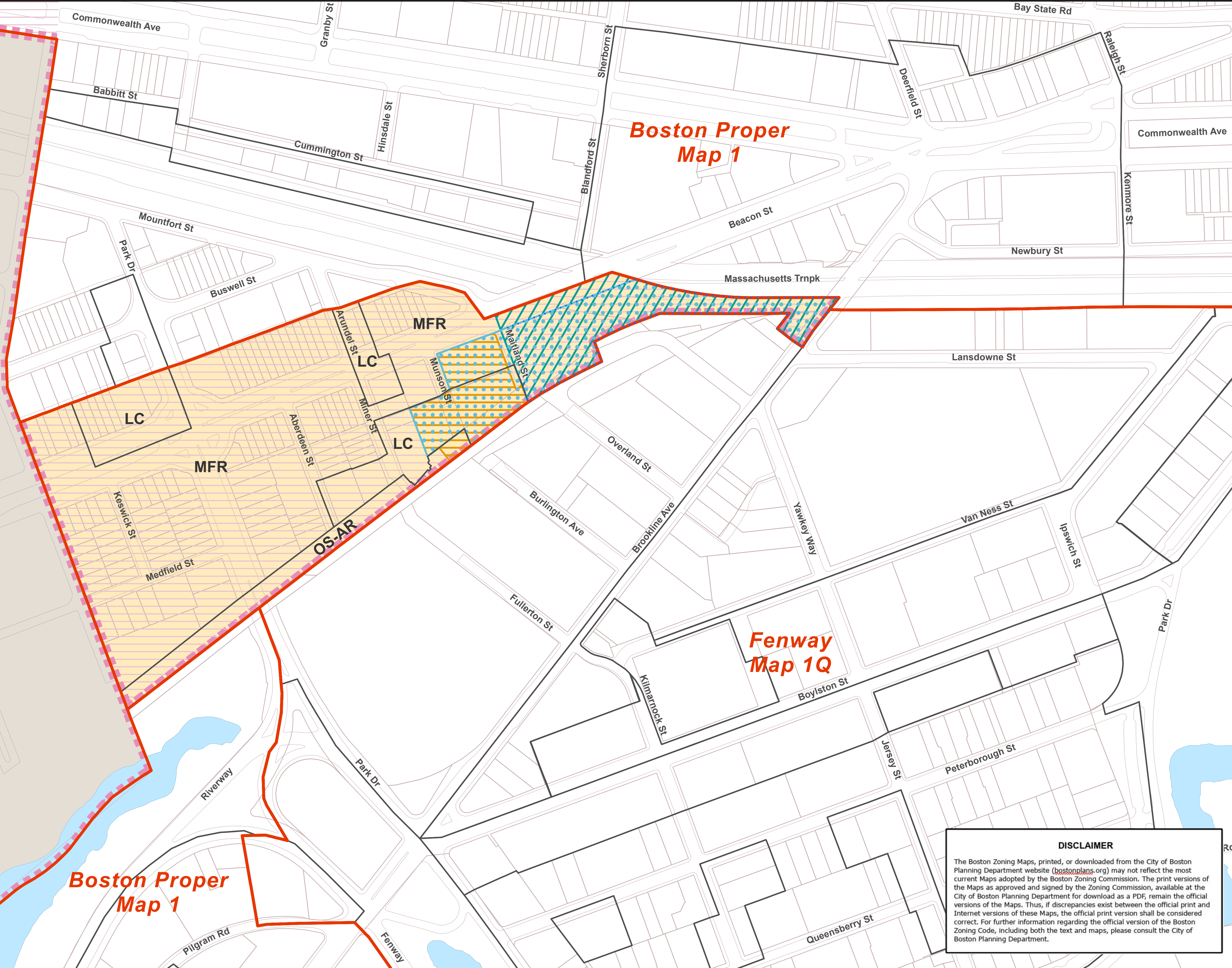
-  Audubon Circle Neighborhood District Boundary
-  District Boundary
-  Subarea Boundary
-  Planned Development Area Designation
-  PDA Permitted
-  Institutional Master Plan Overlay District
-  Special Study Area
-  Neighborhood Design Overlay District
-  Groundwater Conservation Overlay District

- MFR** Residential Subdistrict
Multifamily Residential Subdistrict
- OS-AR** Open Space Subdistricts
Open Space Air-Rights Subdistrict
- LC** Neighborhood Business Subdistricts
Local Convenience Subdistrict
- For maximum allowed Height, FAR, and other provisions, see Article 61.
- The Audubon Circle Neighborhood District is within the Restricted Parking (Overlay) District. See Map Amendments No. 144 and No. 201.



Map Designed for 1" = 150'

Boston Proper Map 1



DISCLAIMER

The Boston Zoning Maps, printed, or downloaded from the City of Boston Planning Department website (bostonplans.org) may not reflect the most current Maps adopted by the Boston Zoning Commission. The print versions of the Maps as approved and signed by the Zoning Commission, available at the City of Boston Planning Department for download as a PDF, remain the official versions of the Maps. Thus, if discrepancies exist between the official print and Internet versions of these Maps, the official print version shall be considered correct. For further information regarding the official version of the Boston Zoning Code, including both the text and maps, please consult the City of Boston Planning Department.