

9A Jamaica Plain Neighborhood District

9A Jamaica Plain Neighborhood District

**Legend**

- Jamaica Plain Neighborhood District Boundary
- District Boundary
- Subarea Boundary
- PDA Designation
- Institutional Master Plan Area
- Neighborhood Design Overlay District
- Greenbelt Protection Overlay District (See Sections 55-27, 55-28)

**CPS, IDA** PDA Permitted

**Residential Subdistricts**

- 1F One-Family Residential Subdistrict
- 2F Two-Family Residential Subdistrict
- 3F Three-Family Residential Subdistrict
- MFR Multifamily Residential Subdistrict

**CPS Conservation Protection Subdistrict**

**Open Space Districts**

- OS Open Space District
- OS-A Air-Right Open Space Subdistrict
- OS-BZ Botanical/Zoological Garden Open Space Subdistrict
- OS-CM Cemetery Open Space Subdistrict
- OS-P Parkland Open Space Subdistrict
- OS-RC Recreation Open Space Subdistrict
- OS-UW Urban Wild Open Space Subdistrict

**Neighborhood Business Subdistricts**

- NS Neighborhood Shopping Subdistrict
- LC Local Convenience Subdistrict

**Local Industrial Subdistrict**

- LI Local Industrial Subdistrict

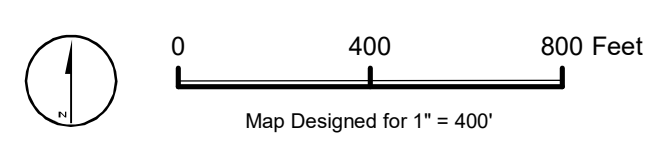
**Industrial Subdistrict**

- IDA Industrial Subdistrict

**Neighborhood Institutional Subdistrict**

- NI Neighborhood Institutional Subdistrict

For maximum allowed Height, FAR, and other provisions, see Article 55.



Zoning Districts City of Boston  
**Map 9A**  
**Jamaica Plain Neighborhood District**  
 (Replacing "Map 9, Jamaica Plain")

Adopted by the Zoning Commission of the City of Boston in meeting on August 18, 1993

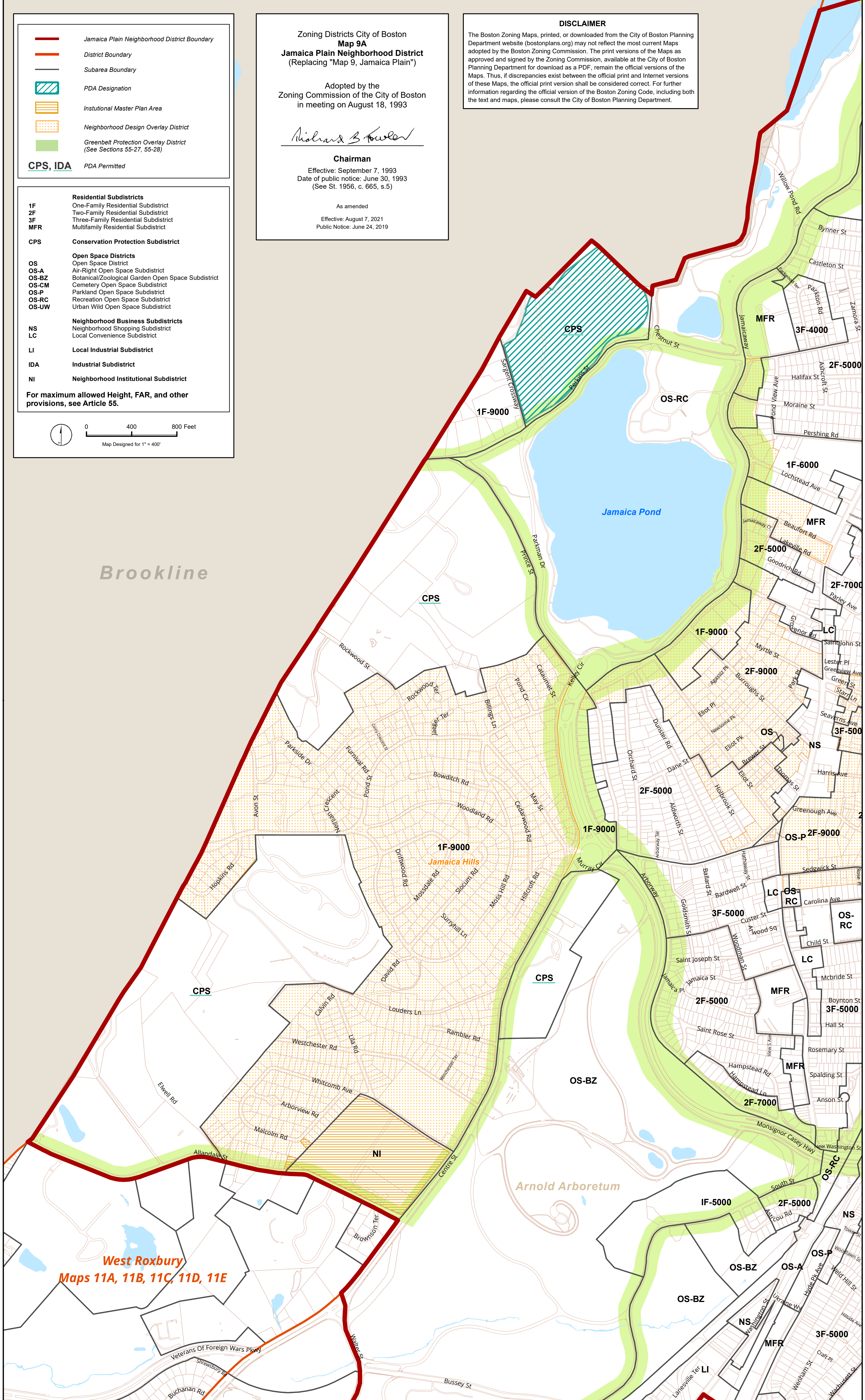
*Richard B. Kowler*

**Chairman**  
 Effective: September 7, 1993  
 Date of public notice: June 30, 1993  
 (See St. 1956, c. 665, s.5)

As amended  
 Effective: August 7, 2021  
 Public Notice: June 24, 2019

**DISCLAIMER**

The Boston Zoning Maps, printed, or downloaded from the City of Boston Planning Department website (bostonplans.org) may not reflect the most current Maps adopted by the Boston Zoning Commission. The print versions of the Maps as approved and signed by the Zoning Commission, available at the City of Boston Planning Department for download as a PDF, remain the official versions of the Maps. Thus, if discrepancies exist between the official print and Internet versions of these Maps, the official print version shall be considered correct. For further information regarding the official version of the Boston Zoning Code, including both the text and maps, please consult the City of Boston Planning Department.



Brookline

Arnold Arboretum

West Roxbury  
Maps 11A, 11B, 11C, 11D, 11E

9A Jamaica Plain Neighborhood District

9A Jamaica Plain Neighborhood District