



# Reyinyon Komite Siveyans Plan Prnsipal Stratejik Roxbury

12 Septanm 2022

# **1. RSMPOC**

# **Byenveni ak Oryantasyon**

# Anrejistreman Reyinyon

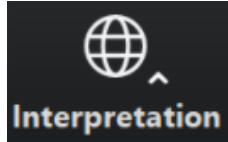
---

Sou demann manm yo nan kominote a, aktivite sa pral anrejistre sou paj entènèt Plan Prensipal Stratejik Roxbury nan [bit.ly/theRSMPOC](https://bit.ly/theRSMPOC) pou sila yo ki pa anmezi pou patisipe nan aktivite andirèk Zoom.

Egalman, li posib ke patisipan yo kapab anrejistre reyinyon an avèk telefòn kamera oswa lòt aparèy yo. Si ou pa vle yo anrejistre w pandan reyinyon an, tanpri fèmen mikwofòn ak kamera w.

Si kamera ak mikwofòn ou dezaktive, ou ka toujou patisipe atravè fonksyon chat pa tèks.

# Entèpretasyon ak Tradiksyon

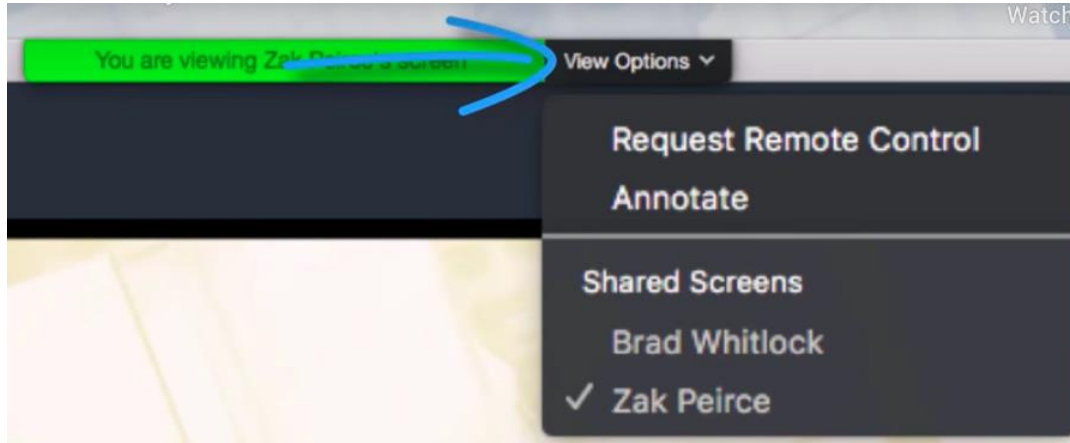


“Panyòl” – pou Panyòl

“Kreyòl Ayisyen” – pou Ayisyen

“Angle” – pou Angle

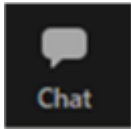
“Kreyòl Cape Verdean” - pou Kreyòl Cape Verdean



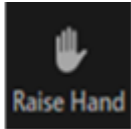
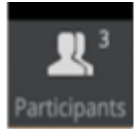
# Konsèy sou Zoom

---

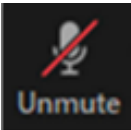
Byenveni! Men kèk konsèy sou fason pou itilize Zoom pou itilizatè premye fwa. Kontwòl ou yo anba ekran



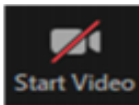
Itilize chat la pou tape yon kòmantè oswa mande yon kesyon a nenpòt kilè –Manm yo nan RSMPOC/ BPDA ap modere chat la



Pou leve men w, klike sou “Patisipan” anba ekran w lan, e apreswa chwazi opsyon “Leve Men” nan kazyè patisipan an, oswa peze \*9 sou telefòn



Silans/reyaktif – Patisipan yo ap rete an silans pandan prezantasyon an – prezantatè a pral reyaktif w pandan diskisyon an si ou leve men w e se moman pa w pou pale. Pou silans/reyaktif sou telefòn ou peze\*6.



Aktive/dezaktif videyo w

# Pwotokòl Zoom

---

Nou vle asire ke konvèsasyon an se yon eksperyans agreyab pou tout patisipan yo.

- Tanpri rete an silans jiskaske yo rele w. Si ou ta renmen pale pandan tan sa a tanpri itilize fonksyon “Leve men” nan Zoom kidonk yon moderatè BPDA kapab reyaktifè son patisipan yo.
- Tanpri respekte tan chak moun.
- Nou mande pou patisipan yo limite kesyon yo kidonk lòt moun kapab patisipe nan diskisyon an. Si ou gen plis kesyon, tanpri rete tann jiskaske tout lòt moun kap patisipe yo gen yon opòtinite pou poze kesyon.
- Si nou pa anmezi pou reponn kesyon w nan reyinyon sa a tanpri mete yo nan Chat la nan fen an oswa imèl [rebecca.hansen@boston.gov](mailto:rebecca.hansen@boston.gov)

# Pwogram

---

- 1. Byenveni RSMPOC**
- 2. Prezantasyon Melissa Meyer**

# Apèsi ak Mizajou RSMPOC

---

## *Premye Lendi nan Mwa*

10 Janvyè 10, 2022

7 Fevriye 2022

7 Mas 2022

4 Avril 2022

16 Me 2022

6 Jen 2022

11 Jiyè 2022

**\*\* Pa gen reyinyon nan mwa Out \*\***

**12 Septanm 2022**

3 Oktòb 2022

7 Novanm 2022

**\*\* Pa gen reyinyon nan mwa Desanm \*\***



# Responsablite RSMPOC

---

- Komite Siveyans Plan Prensipal Roxbury (RSMPOC) te kreye nan 2004 alaswit yon Plan Prensipal Estratejik Roxbury (RSMP).
- RSMPOC reprezante lajman katye Roxbury e li gen ladan Majistra ki nonmen yo, nonmen pa eli ofisyèl yo, asosyasyon katye, ak òganizasyon kominotè yo.
- RSMPOC sipèvize enplemantasyon Plan Prensipal Estratejik Roxbury ak PLAN: Nubian Square.

# Antre. Angaje. Pran Aksyon.

---

- **Antre:** Antre nan Komite Siveyans Plan Prensipal Estratejik Roxbury, ak/oswayon Komite Revizyon Pwojè (PRC).
- **Angaje:** Patisipe nan reyinyon piblik yo. Mande kesyon. Envite vwazen yo, gwoup sivik Roxbury ak òganizasyon yo, biznis, pwopriyete adjasan oswa lòt kominote afilye nan reyinyon piblik yo.
- **Pran Aksyon:** Revize aksyon ak kòmante sou pwojè yo, devlopman, ak inisyativ planifikasyon.

Pou w jwenn plis enfòmasyon sou reyinyon kap vini yo, pwojè devlopman ak kijan pou patisipe, vizite [bit.ly/theRSMPOC](https://bit.ly/theRSMPOC)

# Objektif Plan Prensipal Orijinal 2004

---

- Amelyore **Kilti lavi & sivik** nan katye a
- Ankouraje **kwansans divès & dirabilite** avèk djòb pou rezidan lokal yo
- Asire **transpòtasyon prive piblik nan yon fason ki ansekirite & pratik**
- Elaji & amelyore **lojman pou yon varyete** laj ak gwoup sosyo-ekonomik
- Kreye yon **domèn piblik konfòtab, antouzyas, ak ansekirite** ki montre divèsite rezidan lokal yo
- Amelyore **patisipasyon kominotè** ak **otonomizasyon** komite yo grasa a yon responsablite kwasan gouvènman, ak enstitisyon ak biznis yo

# NUBIAN SQUARE

*Apèsi sou espas kiltirèl & Atistik*

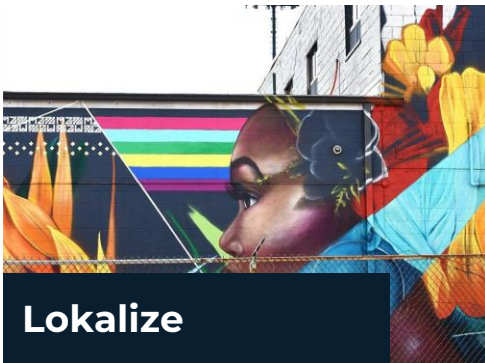
**B**



City of Boston  
Arts and Culture



Sipò Dirèk



Lokalize

### **Òganizasyon yo**

Pwosis ak sibvansyon Konsèy Kiltirèl Boston, lòt sibvansyon pou òganizasyon yo

### **Endividyèl**

Fon Opòtinite, Prim pou Atis kap Emèje, Pwogram Loreya Powèt, Atis Boston nan Rezidans, Atelye Ekonomi Kreyatif

### **Ar Piblik**

Pousantaj pou pwogram Atistik, Komisyon Atistik Boston, Pwogram Atistik Piblik Transfòmatif, Penti Miral

### **Espas Kiltirèl**

Liy direktiv sou konsepsyon atis an dirèk -negosyasyon pou lojman atis ak espas kiltirèl atravè Revizyon Devlopman, Sètifikasyon Lojman Atis, Strand Theater, Galri Lameri

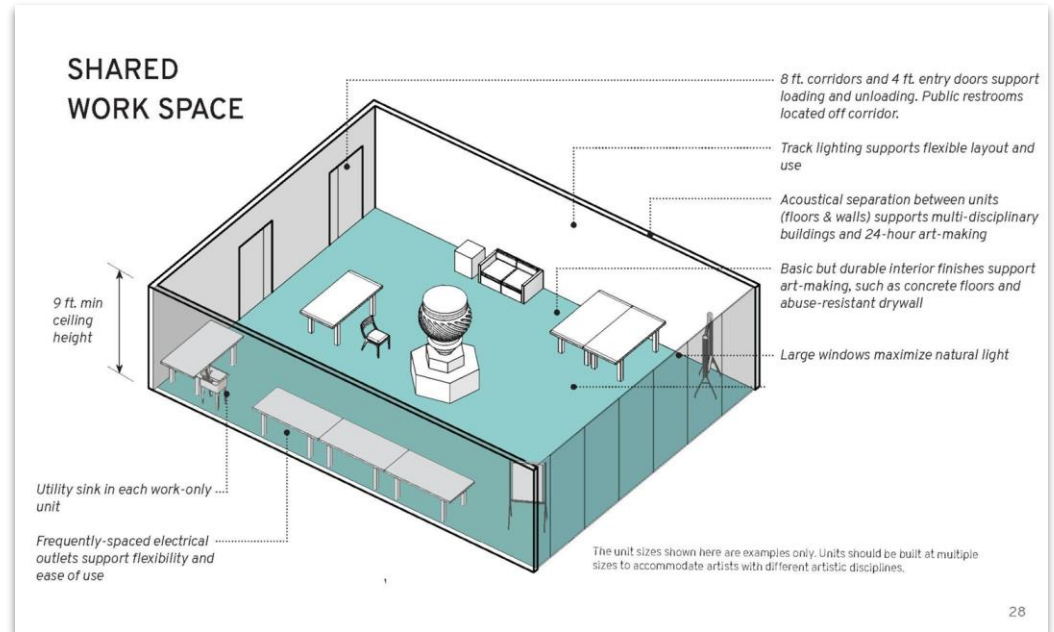
### **Plasman**

Distri Kiltirèl ak Planifikasyon Kiltirèl



# RESOUS MOAC

- Angajman MOAC nan pwojè ak revizyon konsepsyon
- [Liy direktiv sou konsepsyon atis an dirèk](#), konsèy espasyal ak operasyonèl pou toulède espas travay pou abite ak espas travay sèlman
- Lojman Travay-atis abite –lis verifikasyon lojman travay & revizyon MOAC
- Rezo òganizasyon kiltirèl ak atis kap chèche espas
- Patenarya sou pwosesis RFI / RFP pou sekirize operatè espas kiltirèl yo
- Ekip Atistik Piblik : konsèy sou komisyon atistik piblik, Modèl apèl pou Atis yo, fè konnen opòtinite yo



# LIY ESPAS KILTIRÈL

---

## Konsèy BPDA Apwouve

1. 2147 Washington
2. Nubian Ascends
3. 2085 Washington
4. NUBA Residences (P8)

## Sou-Revizyon

1. Bartlett Place (pa etap)

## Pwofil kap vini

1. Nawn Factory
2. Crescent Parcel

## Lòt

1. Jazz Urbane
2. P3

## Espas kiltirèl pwopoze

- 1 x espas mizik andirèk ak aktivite nan ti nivo
- 1 x sant pèfòmans atistik nan nivo mwayèn
- 10 x espas pou repetisyon (dans ak teyat)
- 6 x espas galri
- 1 x espas fabrikasyon pataje
- 10 espas travay atistik endividyèl
- 62 + inite lwaye avèk preferans atis
- 23 inite pwopriyetè kay ak preferans atis
- Plizyè pwopozisyon ar piblik

# BYEN KI EGZISTE NAN ESPAS KILTIRÈL

---

## **Hibernian Hall**

- Sal pou bal kapasite 250 (disponib pou lwe)
- Sal konferans kapasite 30

## **Nubian Gallery**

- 9 espas travay kreyatif, ki gen ladan estidyo, chanm ekran vèt, espas miray blan pou fotografi
- Espas aktivite 3,500 pye kare
- Disponib pou rezève

## **Black Market**

- Inisyativ Ar Piblik Nubian Square
- 4,300 espas pou lavant andetay, evènman ak rasanbleman

## **Espas kominotè Branch BPL (\* èdtan limite)**

- Sal konferans kapasite 25
- Sal kominotè kapasite 40
- Sal konferans kapasite 150

## **DeWistt Center**

- Salklas ak espas aktivite
- Galri

## **Bolling Building** etaj anwo

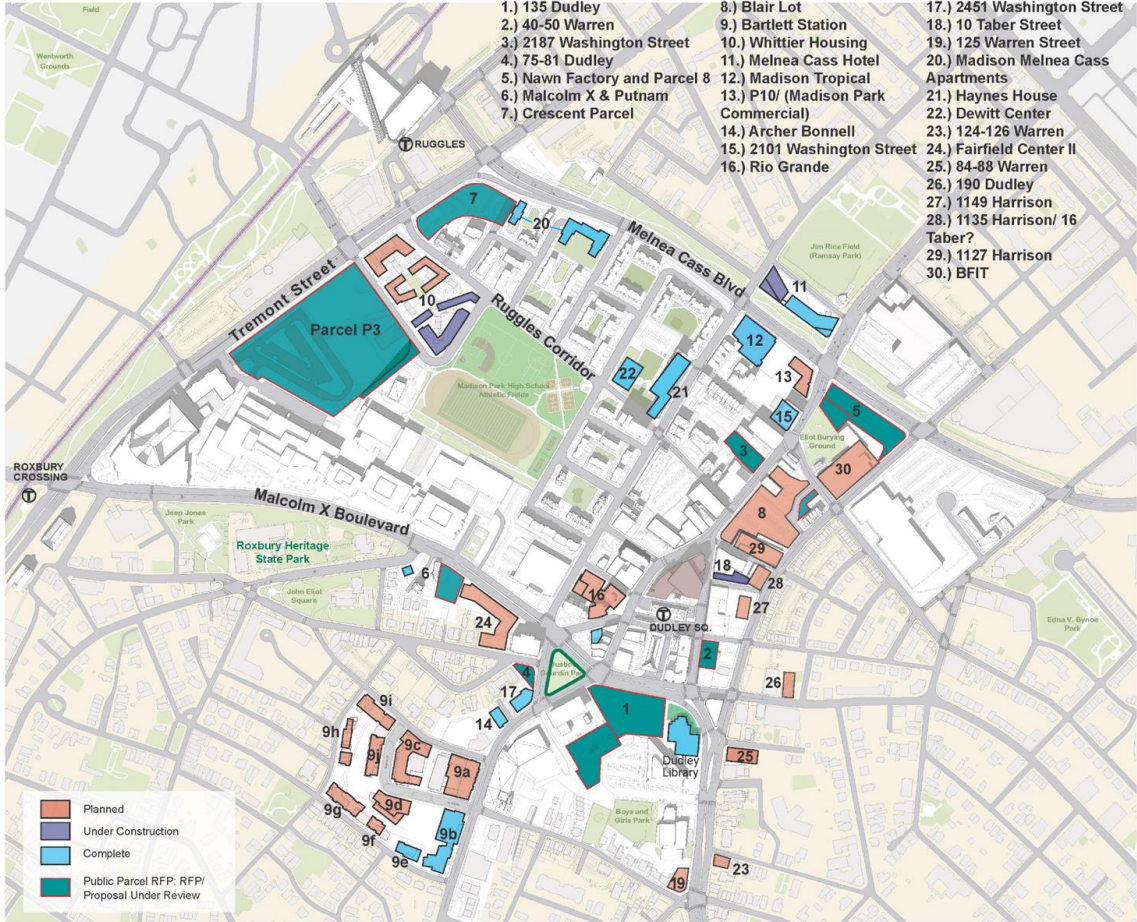
- Espas aktivite

## **Slades Bar & Grill**

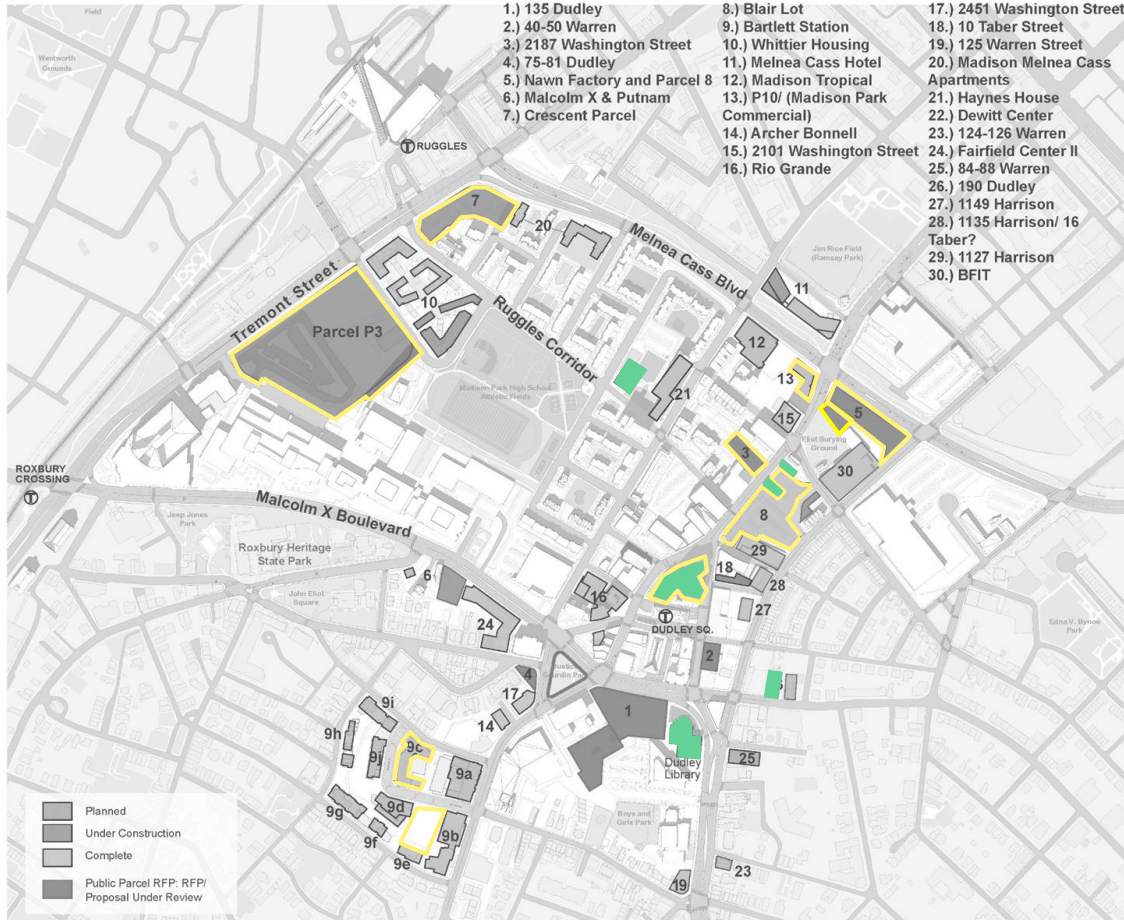
- Espas evènman an dirèk



# LIY ESPAS KILTIRÈL



# LIY ESPAS KILTIRÈL



- Pwojè avèk espas kiltirèl yo
  - 2147 Washington
  - Nubian Ascends
  - 2085 Washington
  - NUBA Residences (P8)
  - Bartlett Place
  - Nawn Factory
  - Créscent Parcel
  - Jazz Urbane
  - P3

- Byen espas kiltirèl ki egziste deja
  - Nubian Gallery
  - Black Market
  - Hibernian Hall
  - BPL Roxbury Branch Library
  - DeWitt Center
  - Bolling Building



# 2147 WASHINGTON



2147 WASHINGTON STREET

D/R/E/A/M COLLABORATIVE  
ARCHITECTURE | REAL ESTATE DEVELOPMENT



**62 inite lokasyon + 12 inite pwopriyetè kondo** ak preferans pou Sètifikasyon Lojman Atis Boston

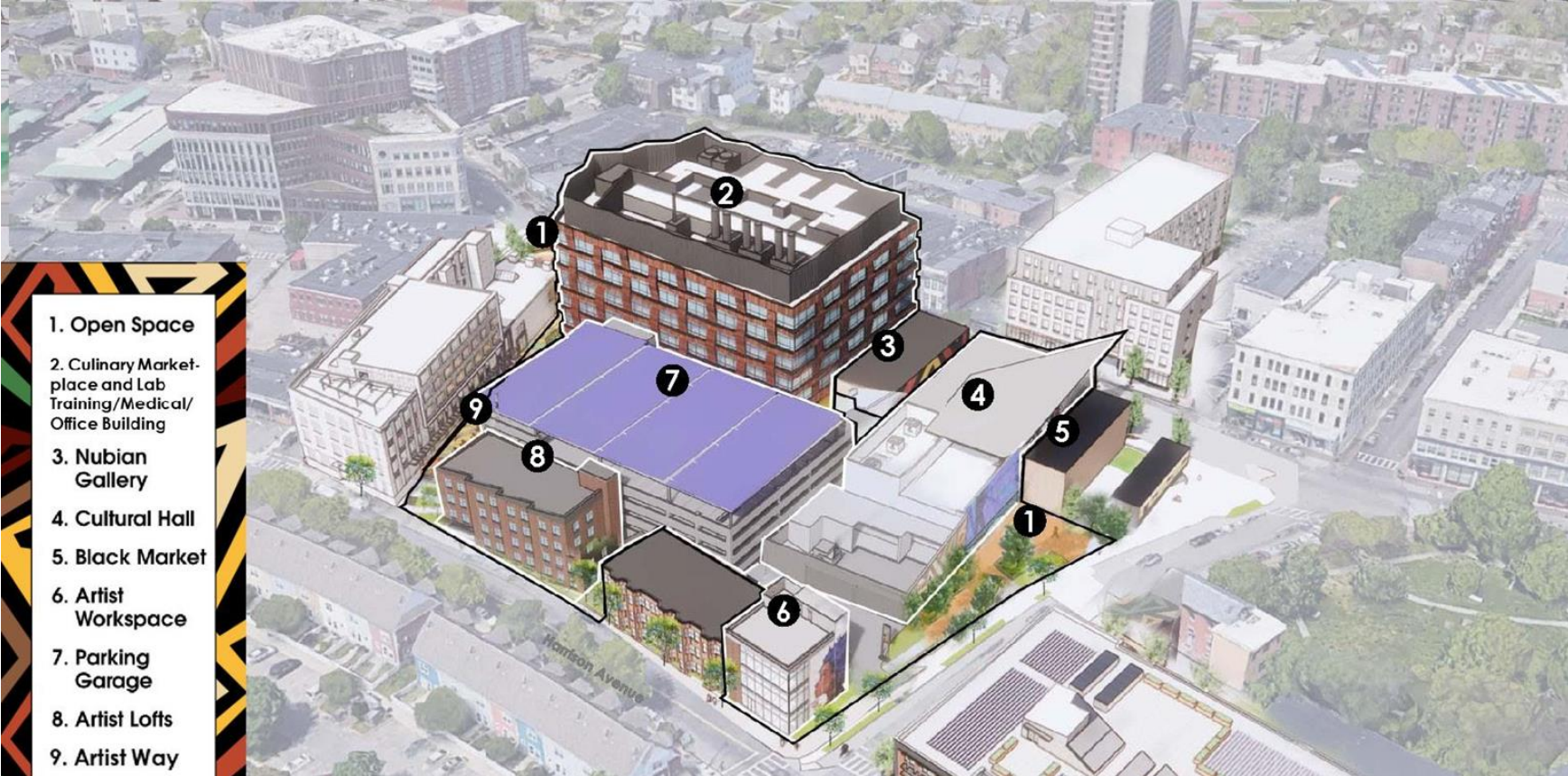
4,000 pye kare sousòl **espas travay pataje** enkli. zòn mouye, chanm espre, salklas, zòn fleksib, modèl abònman (rabè pou rezidan yo)

2 espas pou lavant andetay nan sousòl

Sal datant /galri



# NUBIAN ASCENDS



1. Open Space

2. Culinary Marketplace and Lab Training/Medical/Office Building

3. Nubian Gallery

4. Cultural Hall

5. Black Market

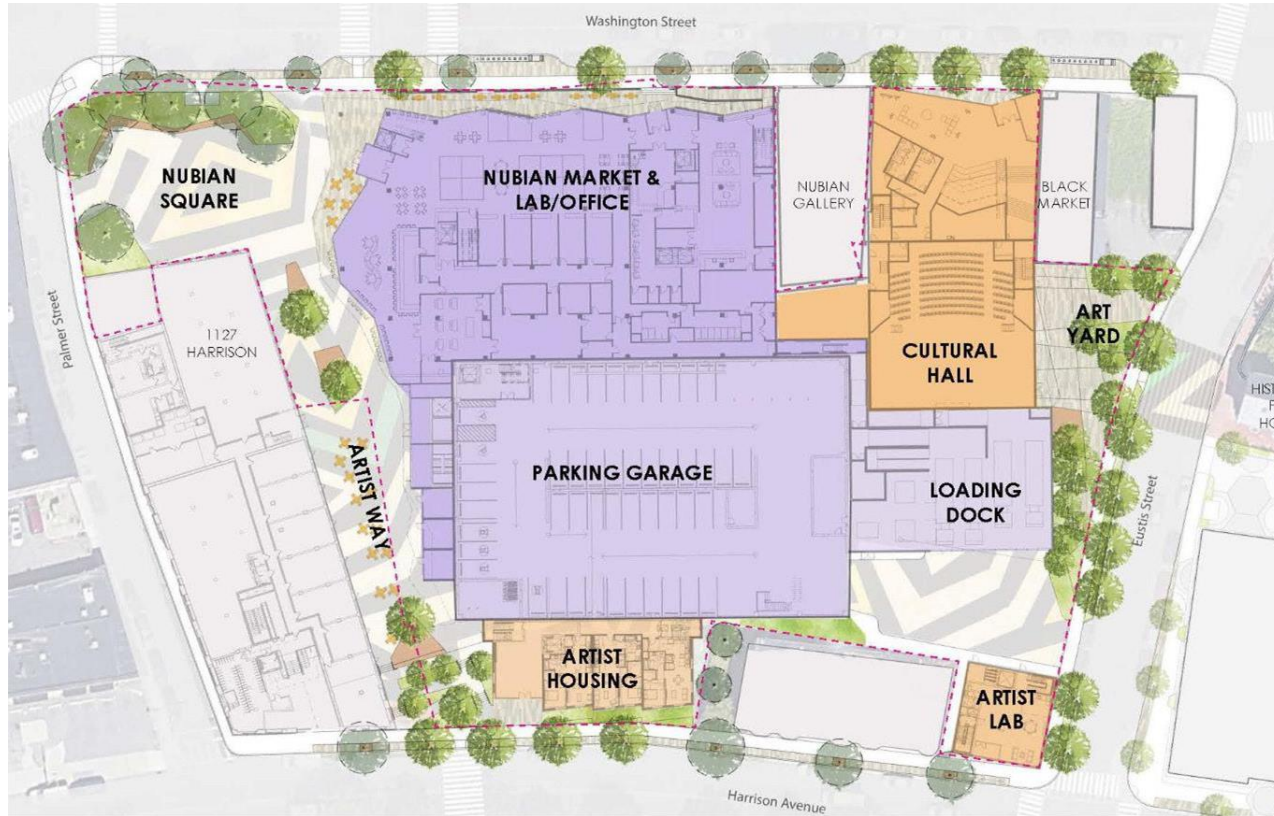
6. Artist Workspace

7. Parking Garage

8. Artist Lofts

9. Artist Way

# NUBIAN ASCENDS



**Sal Kiltirèl:** Teyat 370 plas, saldatant, Estidyo Kreyasyon Mouvman Atistik, espas edikasyonèl, galri ak sal repetisyon

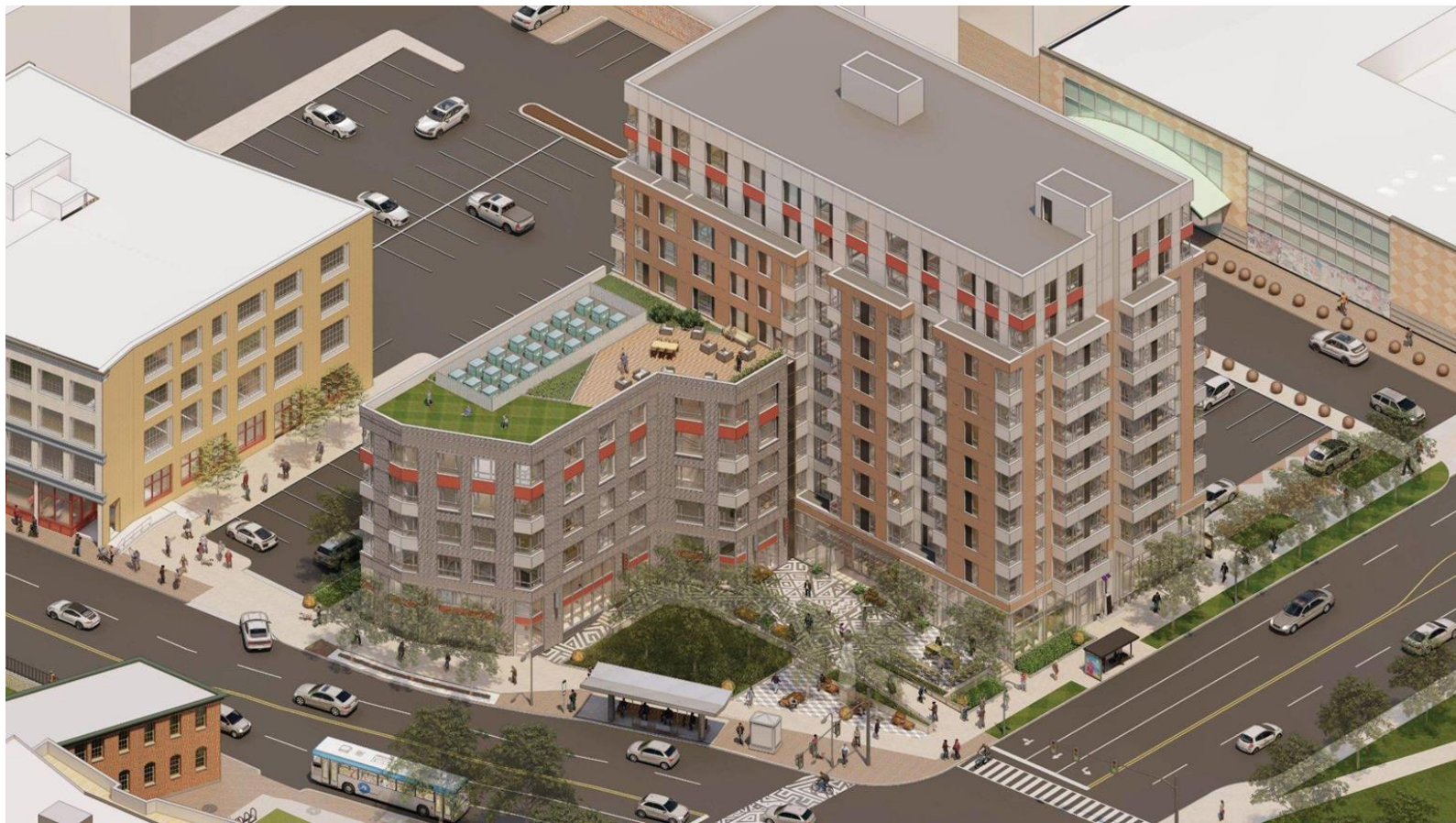
6,600 pye kare **espas travay atis 'Laboratwa'**

15 inite **pwopriyetè kay** ki gen preferans Sètifikasyon Lojman Atis Boston

Komisyon **Ar Piblik**

# 2085 WASHINGTON

---





# REZIDANS NUBA

## GATEWAY PARK- ART GALLERY



**5 inite rezidansyèl  
pou atis yo + 5  
espas travay pou  
atis nan sousòl**

**3,000 pye kare  
galri / espas  
egzibisyon**

**'Pwomnad Atistik'**

PARCEL 8, BOSTON





# BARTLETT PLACE

## What is Oasis@Bartlett?

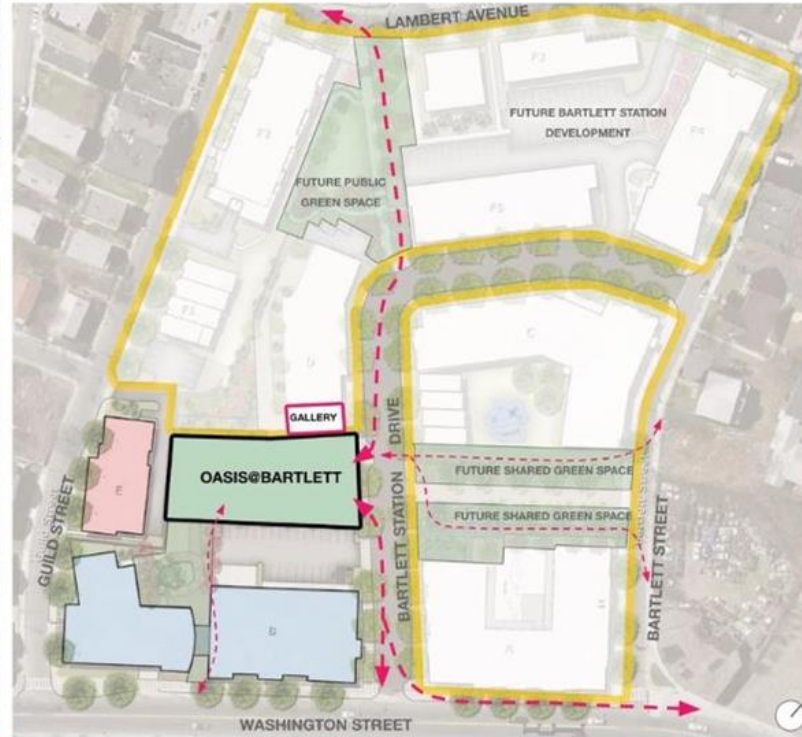
**2012**  
Nuestra Comunidad, with support from Rose Fellow Mark Matel and many community organizers, begin placemaking activities at Bartlett Place. Their goal is to re-vision a former transit yard into a "creative village" that can serve as a sustainable residential and commercial node in Roxbury.



**2019**  
*Be the Artist* festival last September brought together visual and performing artists throughout Roxbury to celebrate the completion of Bartlett Yard's first Phase as well as revive excitement and investment in **Oasis@Bartlett**



**2020**  
*TRILLFIT Cardio Dance* pop-up took place at the end of August on recently completed mural by Ricardo Gomez along Bartlett Station Drive. This is one of many pop-ups, including drive-in movie nights generating excitement and long-term programmatic investment in Oasis@Bartlett



Bartlett building C:  
4 inite lojman  
travay pou atis  
inite pou lwaye  
pwopoze

Oasis @ Bartlett  
15,000 pye kare  
domèn piblik pou  
pwogramasyon  
atistik + **espas  
atistik enteryè**

# NAWN FACTORY

---



**Estidyo repetisyon pou dans** a bon mache

Espas kiltirèl 1,340 pye kare  
(pwopoze kòm espas galri)

Espas estidyo 2,510 pye kare (8 estidyo repetisyon pou dans)

Espas biwo 167 pye kare

# CRESCENT PARCEL



**Lojman Preferans Atis**  
pou 10% nan inite yo nan  
Bilding 2 (\*A detèmine)

**Pwogramasyon domèn**  
**piblik** & opòtinite ar piblik  
(\*ap kowòdone avèk lòt  
komisyon yo nan Vil la)

# JAZZ URBANE CAFE @ BOLLING BUILDING

---



Nouvo espas atistik **ki prezante mizik prensipalman**

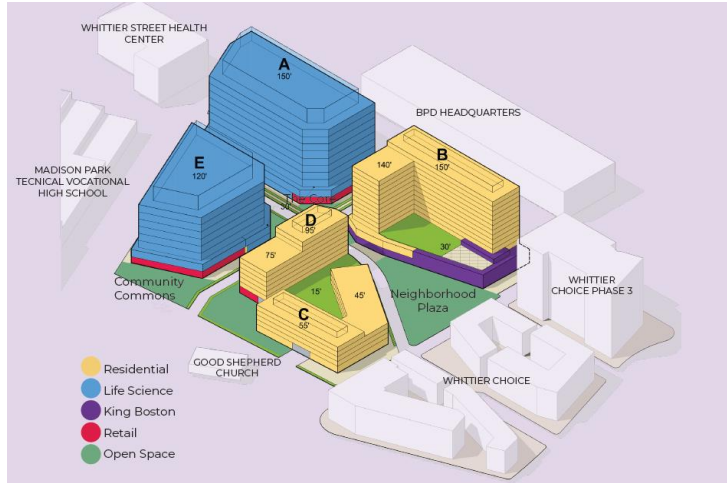
Ap ofri tou lòt modèl prezantasyon  
– ki soti nan pwojeksyon film rive  
nan dans ak teyat dramatik ak  
enstalasyon militi-medya yo

Ap disponib pou lwe pou plizyè  
aktivite

# PWOPOZISYON P3

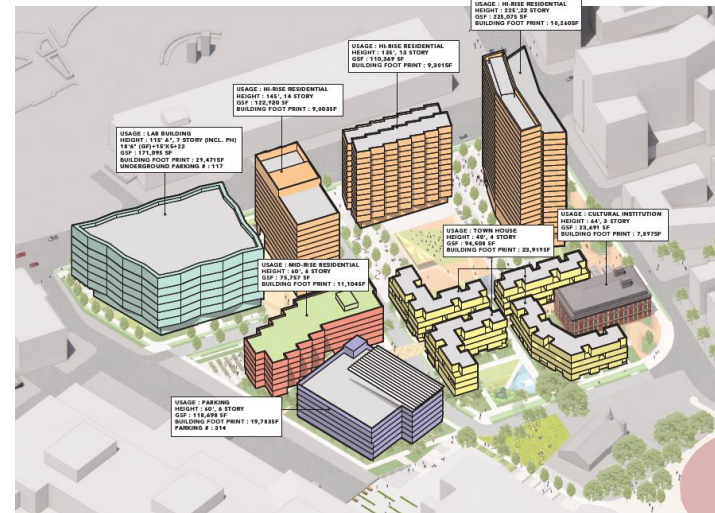
## HYM + My City at Peace

- Lokatè nan sousòl King Boston avèk apeprè 31,000 pye kare enkli apeprè. 21,250 pye kare espas galri
- Domèn piblik avèk kapasite pwogramasyon



## Tishman Speyer & Ruggles Progressive Partners

- 15 inite lojman travay-abite
- Patenarya ak Mize Istwa Afriken Ameriken pou kreye yon Mize Roxbury nan Old Whittier Building (Apeprè 23,000 pye kare)
- Domèn Piblik avèk ar piblik & kapasite pwogramasyon



# Koridò Atistik

---

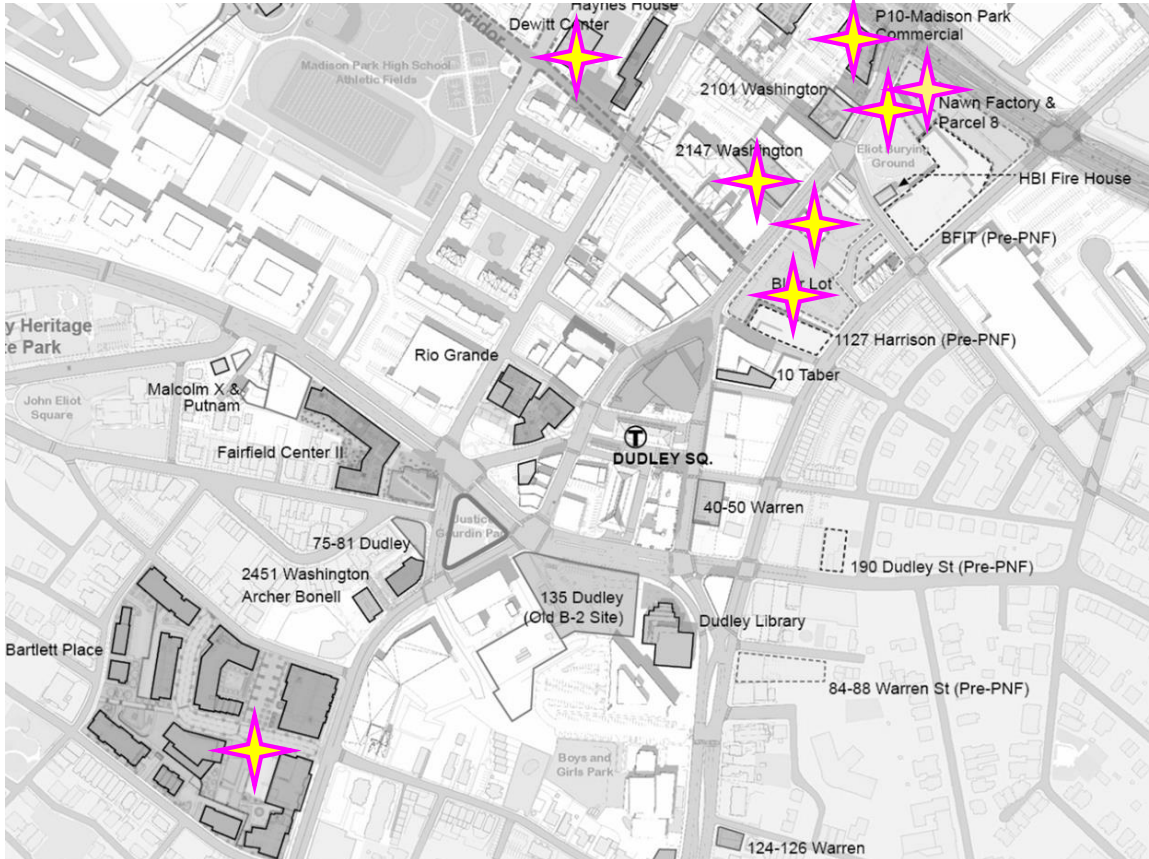
Yon resan rezolisyon Konsèy Vil Boston te apwouve pou sipòte nonmen yon koridò ki pase nan Distri 7 kòm **'ARTery'**.

Koridò yo pwopoze a travèse seksyon Northampton Street, Shawmut Ave, Melnea Cass Blvd, Washington Street, Dudley Street, ansanm ak Blue Hill Avenue epi li fini nan Mize Sant Nasyonal Atis Afro-Ameriken yo. **'ARTery' a kwaze ak kèk nan espas kiltirèl nan liy devlopman ki make isit la, patikilyèman sou Washington Street.**

*Rezolisyon an fè remake ke "zòn ki soti nan Mass Ave ak Columbus Ave rive nan Grove Hall genyen yon gwo prévalans nan divès biznis lokal, men li soufri de yon jonksyon defavorab nan teren vid, diminye trafik pyeton ak yon mank espas piblik"*

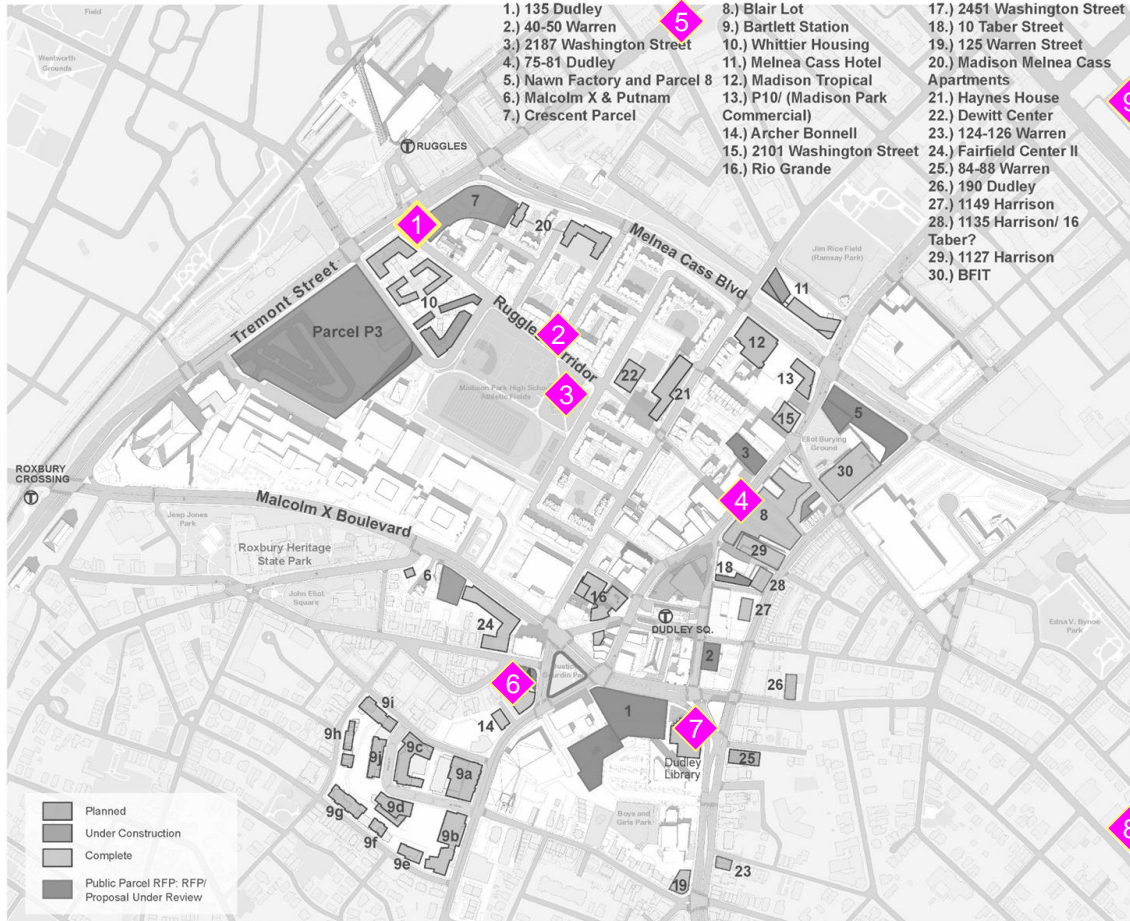
*ARTery a pwopoze pou "kontrekare sitiyasyon sa a ki pa satisfèzan, men li tabli bòn teren kiltirèl yo, komisyone atis, aktivite ak antreprenè pou transfòme teren ki pa itilize yo an espas kominotè, renove lari ak twotwa ki deteryore, epi otorize wout otobis vwayaj atravè katye Nwa ak moun koulè ki rich nan kilti".*

# ESPAS GALRI



Nubian Gallery	3,500 pye kare kapab itilize kòm galri
DeWitt Center	Espas galri kominotè
2147 Washington	Saldatant / galri
2085 Washington	Espas galri
Nubian Ascends	Galri pwopoze kòm yon pati nan Espas Kiltirèl
NUBA (P8)	3,000 pye kare espas galri ke òganizasyon ap dirije
Oasis @ Bartlett	Espas galri
Nawn Factory	1,340 pye kare espas kiltirèl (pwopoze kòm galri)

# AR PIBLIK: PATISIPASYON MOAC



1. Tremont x Ruggles gwo komisyon ar publik
2. Ruggles Corridor Entegre Pwojè Ar Piblik
3. DeWitt playground
4. Washington Street (Black Lives Matter)
5. Legacy of Frederick Douglass
6. Gourdin Memorial Park commission
7. Komisyon Branch BPL Roxbury
8. Sant Kominotè Vine Street
9. Apatman Miral Washington Manor



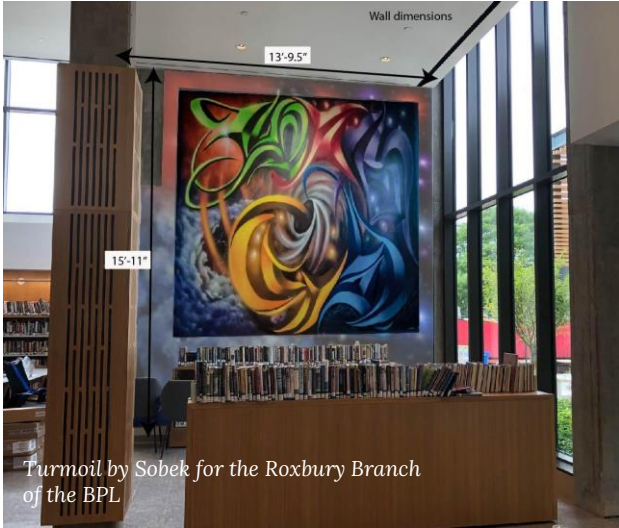
# PUBLIC ART: MOAC INVOLVEMENT



P.L.A.Y. 23, Final design, by the P.L.A.Y. Team (Marlon Forrester and Studio Luz) for the Dewitt Playground



Soledad by Marka27 at Washington Manor



Turmoil by Sobek for the Roxbury Branch of the BPL



Legacy of Frederick Douglass, by Mario Chiodo, after a drawing by Paul Goodnight