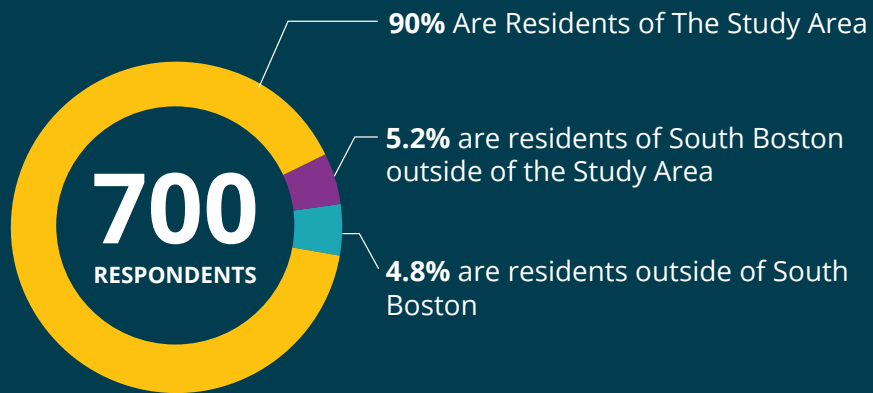


# South Boston Transportation Action Plan Community Survey Takeaways

## Survey Respondents



### Survey respondent age groups



65% of respondents have 1 car available for use.  
15% have more than 1 car.  
20% do not have a car.



48% of the Study Area households have 1 car.  
28% have a more than 1 car.  
24% do not have a car

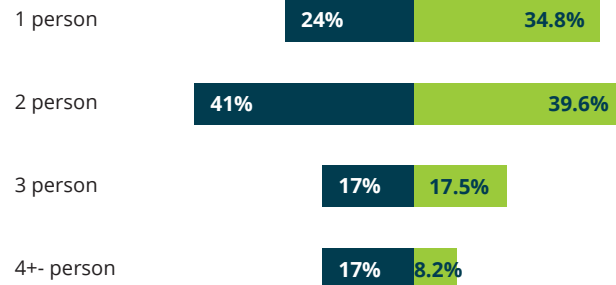


## American Community Survey (ACS) Data (2017-2021)

### SBTAP Survey

### ACS Study Area Data

#### Households size



Almost 15% of respondents have a child or children in school.



Households with children: 14.1% of the Study Area.



The income of survey respondents skewed towards incomes over \$100,000, at 53%.



ACS data shows 64.9% of Study Area residents earn \$100,000 or more.



## Many survey respondents are taking transit, walking and biking for their daily trips



Over 200 respondents, about 35% of survey respondents, primarily take the bus or subway to work, compared to 2016-2020 Census data that indicates 34% of the Study Area takes the bus or subway to work.



Of respondents with children in school, over 40% primarily walk to school, and 70% of respondents report that they drive to and from children's after-school activities.

44% respondents drive or carpool to the grocery store

Over 34% walk to the grocery store

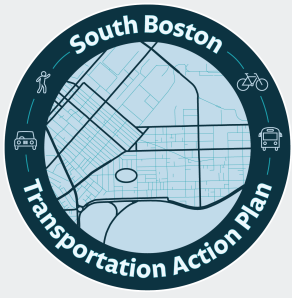


Just over 10% take the bus to the grocery store  
2% ride a bike to the grocery store  
10% Other



Walking is the most popular choice of transportation to get to shopping (42%), restaurants (46%), and visiting local parks and open spaces (64%).





# South Boston Transportation Action Plan Community Survey Takeaways

## Top 3 concerns

# 3



- Infrequent or slow transit service (54%)
- Ability to find parking (52%)
- Tie: Limited or no transit service where I want to go and speeding or aggressive driving (36%)

## Top 3 among car owners



- Ability to find parking (60%)
- Infrequent or slow transit service (48%)
- Speeding or aggressive driving (37%)

## Top 3 for non-car owners



- Infrequent or slow transit service (68%)
- Speeding or aggressive driving (43%)
- Limited or no transit service where I want to go (41%)

## Top 3 for bicyclists



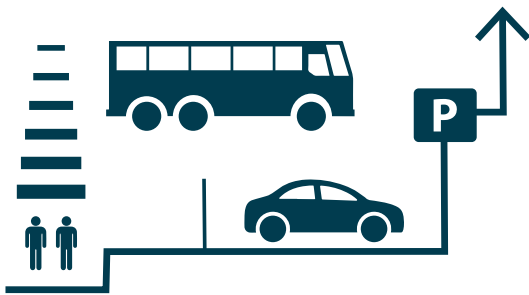
- Lack of safe and comfortable bike lanes (64%)
- Speeding or aggressive drivers (62%)
- Infrequent or slow transit service (42%)

## Top 3 for transit users



- Infrequent or slow transit service (76%)
- The ability to find parking (51%)
- Limited or no transit service where I want to go (48%)

## Most Important (Based on over 650 responses)



- Making the bus faster (55%)
- Maintaining on-street parking (48%)
- Making crosswalks and intersections safer for pedestrians (29%)

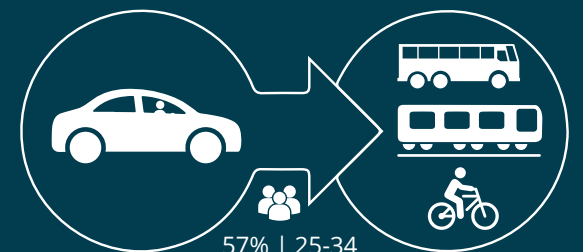
## Mode Choice



**54%** of those driving alone would be interested in a different mode if conditions improved.



**56** survey respondents indicated they would be interested in riding a personal bike or Bluebike if conditions were improved - representing over a doubled population of survey respondents who are bicyclists.



**25%** of survey respondents who are ages 25-34 drive alone, but **57%** of this population was interested in changing this mode if conditions improved.

