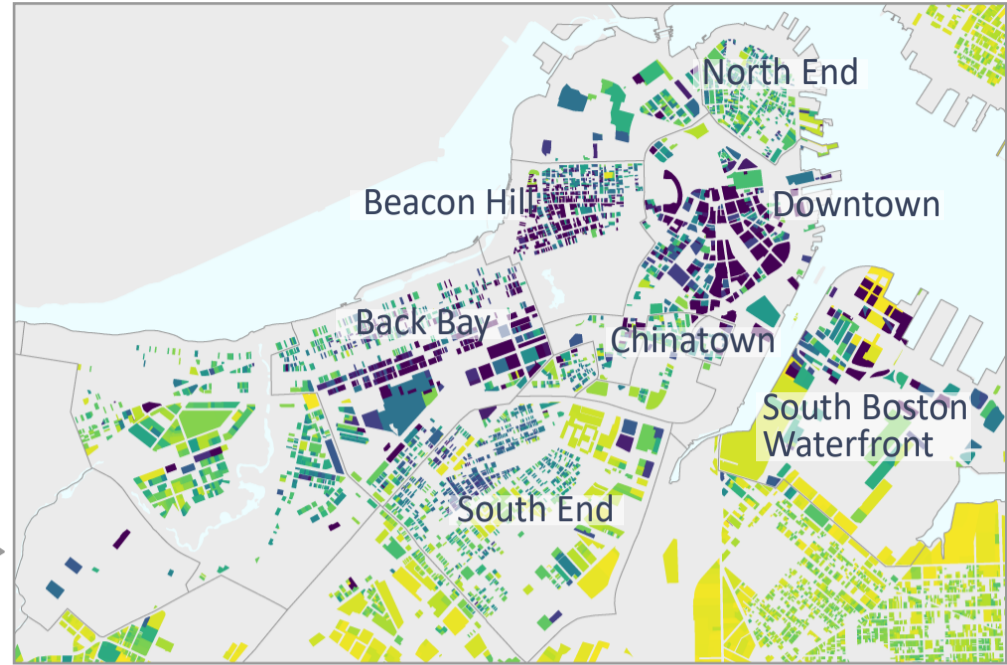
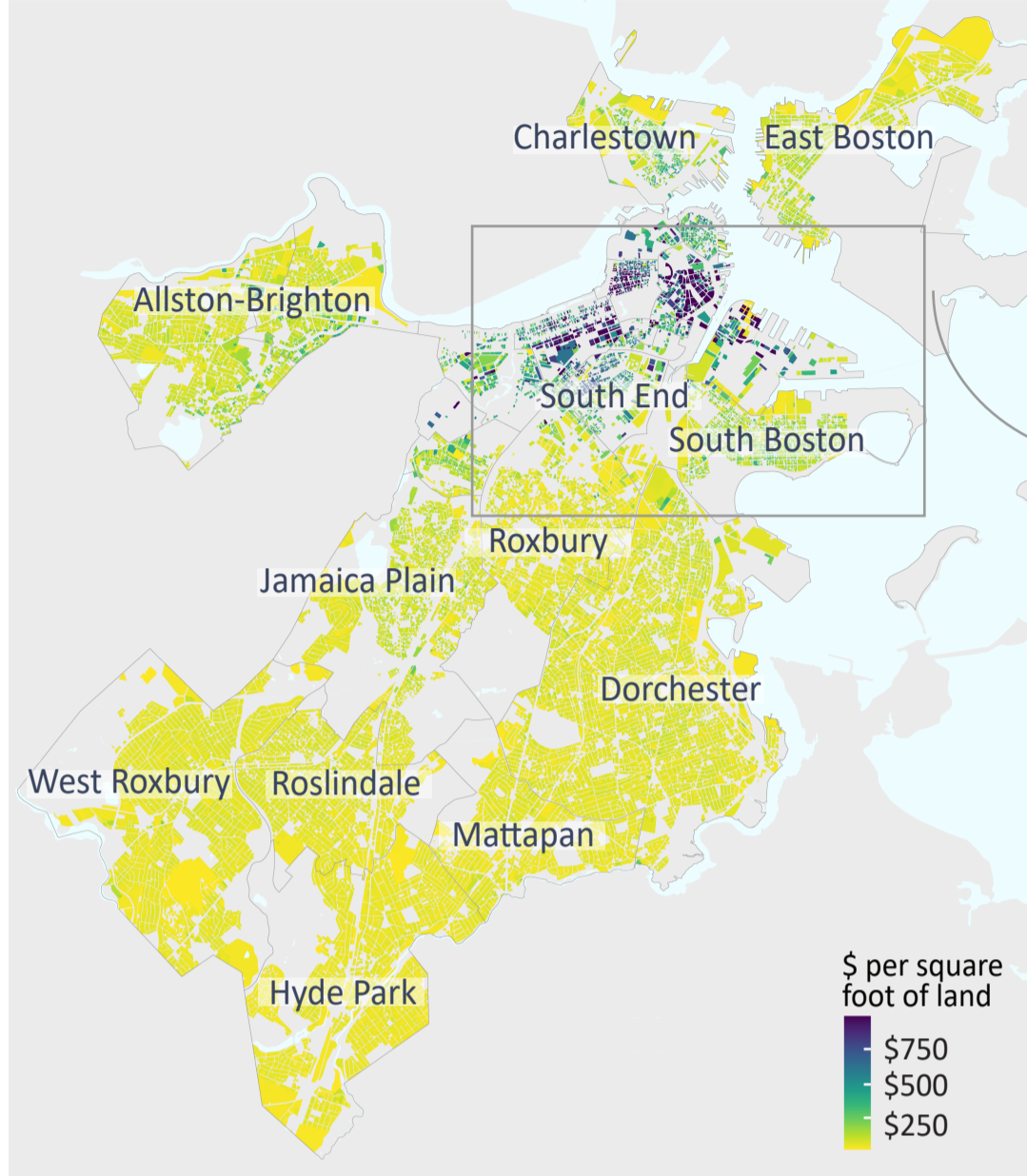


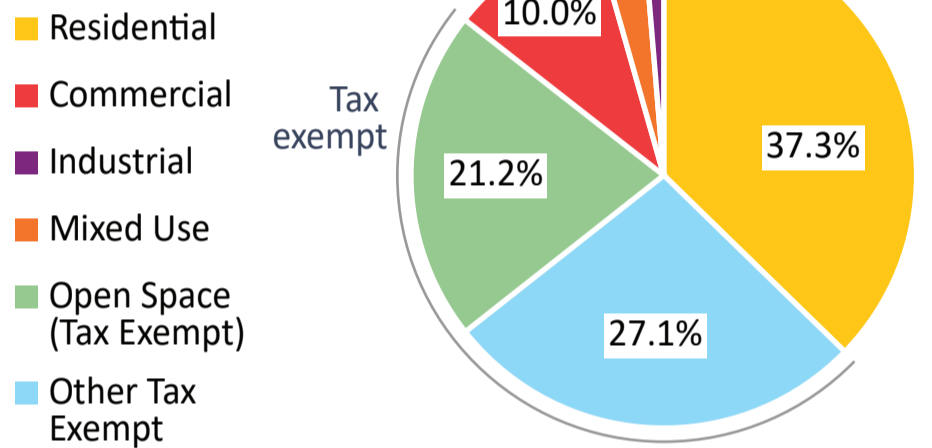
Land Use and Land Value in Boston

In Boston, the highest assessed value is concentrated in neighborhoods close to Downtown, as many of these parcel land areas are commercial and mixed-use. Meanwhile, parcels in neighborhoods further away from Downtown are more likely to be residential and have lower assessed land values.

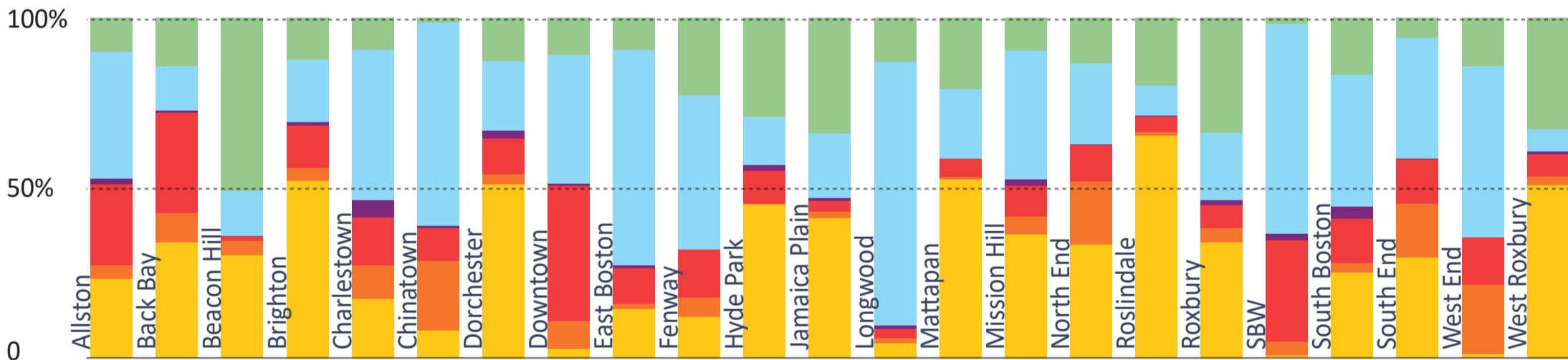
Land Value per Square Foot of Parcel



Citywide Land Use Distribution



Neighborhood Land Use Distribution



Median Parcel Land Value Change between 2003 and 2023

