



**Slide 1**

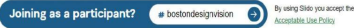
Boston Design Vision  
Konsepsyon pou yon Boston ki Divèsifye  
Virtual Open House  
November 2, 2023



Scan this QR Code to access the online survey

**Or**

- 1. Visit [slido.com](https://slido.com) and
- 2. Use **# bostondesignvision** to join as a participant



*The QR Code is the same for all questions.  
The questions will automatically be updated as we go through the virtual open house.*

**Slide 2**

-

slido

## Hello & Welcome!

Tell Us About Yourself!



Tell us your name and which neighborhood you are from!

① Click **Present with Slido** or install our [Chrome extension](#) to activate this poll while presenting.

### Slide 3

Hello & Welcome

Tell us About Yourself

Tell us your name and which neighborhood you are from!

## Tonight's Agenda

- (15 min) **Welcome**  
What is a Design Vision for the City of Boston?
- (60 min) **Draft Innovations**
  - Public Space** The Street and Park  
*SHARE YOUR IDEAS!*
  - Domestic Realm** The Home and The Porch  
*SHARE YOUR IDEAS!*
  - Places of Commerce** The Square and The Shops  
*SHARE YOUR IDEAS!*
- (10 min) **What's Next?**

### Slide 4

Tonight's Agenda

## Urban Design is...



### Slide 5

Urban Design is...

The art of making places for people.

It is at the intersection of buildings, open spaces, art, transit, businesses, storefront activation, and more that influences how people experience the city everyday.



Boston is anchored by history, culture, identity, and people.

There are narratives and lived experiences that are not reflected in the identity of Boston.

These narratives and lived experiences should be uplifted and centered to expand what defines Boston.

### Slide 6

Boston is anchored by history, culture, identity, and people.

There are narratives and lived experiences that are not reflected in the identity of Boston.

These narratives and lived experiences should be uplifted and centered to expand what defines Boston.

## Unaffordable Housing & Displacement



About 65 percent are renters, and more than half put upwards of 30 percent of their income toward rent



Many people of color to head out of the city and settle in more affordable locations.

### Slide 7

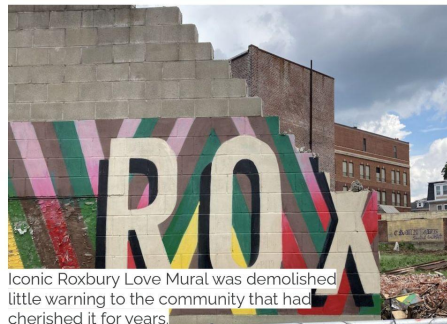
#### Unaffordable Housing & Displacement

About 65 percent are renters, and more than half put upwards of 30 percent of their income toward rent.

Many people of color to head out of the city and settle in more affordable locations.

## Erasure of Cultural Infrastructure

Growth does not have to be about loss and erasure. It is an opportunity to think about ways to grow and value social and cultural infrastructure to create/preserve a sense of belonging and identity in neighborhoods.



Iconic Roxbury Love Mural was demolished little warning to the community that had cherished it for years.

### Slide 8

#### Erasure of Cultural Infrastructure

Growth does not have to be about loss and erasure. It is an opportunity to think about ways to grow and value social and cultural infrastructure to create/preserve a sense of belonging and identity in neighborhoods.



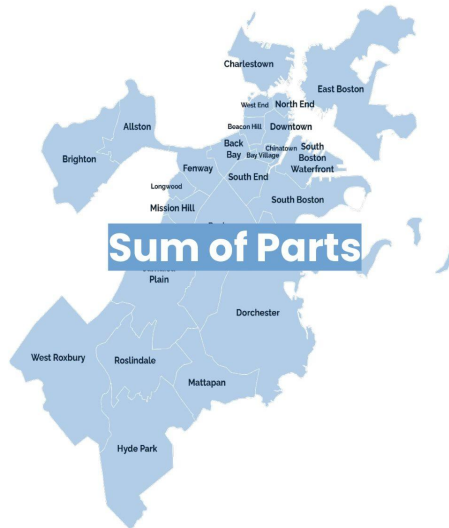
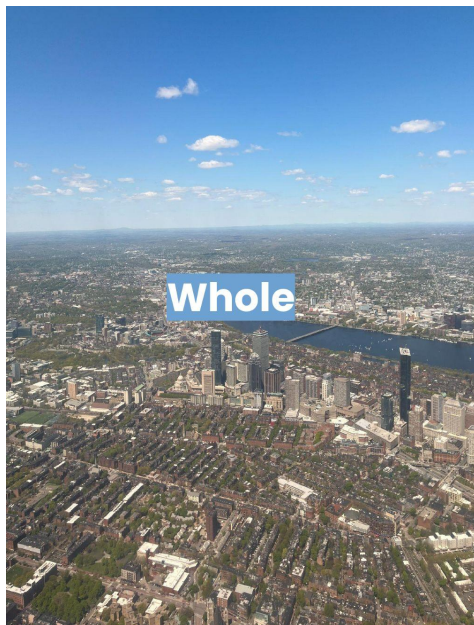
**Key Finding #1**

**Boston is inherently diverse, but more as a whole.**

**Slide 9**

Key Finding #1

Boston is inherently diverse, but more as a whole



**Slide 10**

Whole

Sum of Parts

## Key Finding #2

Boston's unique urban history and form means squares and corridors are a key focus.

### Slide 11

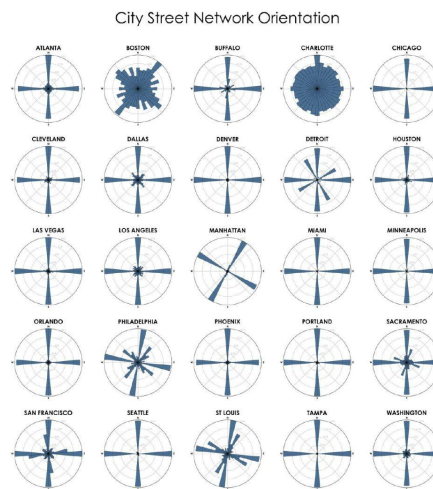
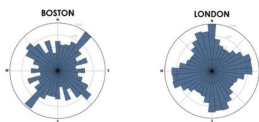
#### Key Finding #2

Boston's unique urban history means squares and corridors are a key focus.

#### Boston's street grid is unlike any other city in the USA

- Boston's streets do not follow a consistent set of directions, which creates a unique sense of (dis)orientation and variation
- The city has pockets of different grids that don't align with each other
- Boston's village-like structure is more conducive to non-auto forms of transportation
- Most closely related city is London

Source: [Boston Globe \(2018\)](#)



### Slide 12

Boston's street grid is unlike any other city in the USA

- Boston's streets do not follow a consistent set of directions, which creates a unique sense of (dis)orientation and variation
- The city has pockets of different grids that don't align with each other
- Boston's village-like structure is more conducive to non-auto forms of transportation
- Most closely related city is London

## Visualizing Boston's Squares

“Unlike many places where a square is most often defined by a public open space or civic structure, here a square is typically defined by an intersection of two or more thoroughfares and/or other streets. The square's name further applies to a business district around that intersection, and sometimes to an entire neighborhood.”

A city of *un*square squares  
Source: [Andy Woodruff \(2010\)](#)



### Slide 13

#### Visualizing Boston's Squares

“Unlike many places where a square is most often defined by a public open space or civic structure, here a square is typically defined by an intersection of two or more thoroughfares and/or other streets. The square's name further applies to a business district around that intersection, and sometimes to an entire neighborhood.”

#### Key Finding #3

There is fear that  
unchecked growth could  
produce more  
homogeneous patterns.

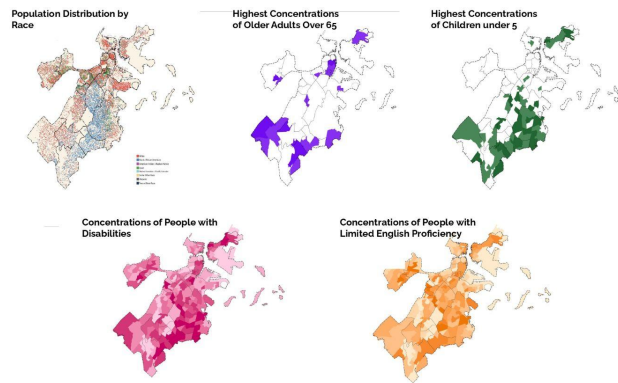
### Slide 14

#### Key Finding #3

There is fear that unchecked growth could produce homogeneous patterns.

A Design Vision Must Consider...

Demographics vary across communities



Source: [Analyze Boston](#) (from 2020 US Census & Climate Ready Boston (2016))

### Slide 15

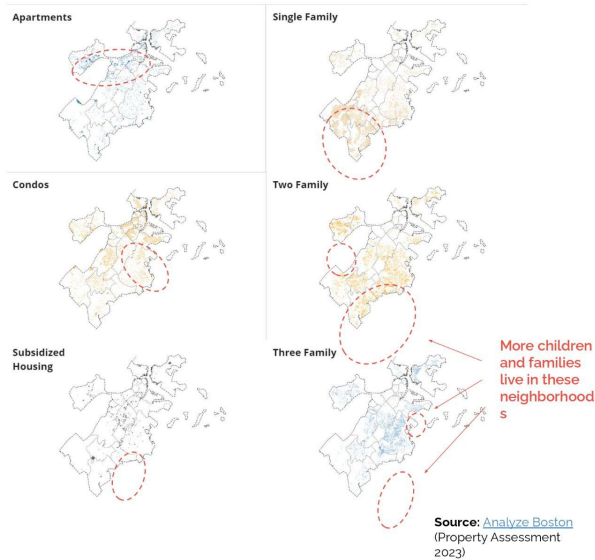
A Design Vision Must Consider...

Demographics vary across communities

A Design Vision Must Consider...

Varied communities require different housing needs

 Largest Concentrations



### Slide 16

A Design Vision Must Consider...

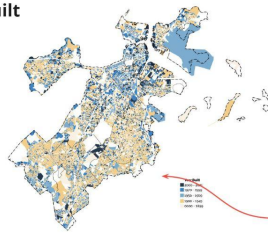
Varied communities require different housing needs



A Design Vision  
Must Consider...

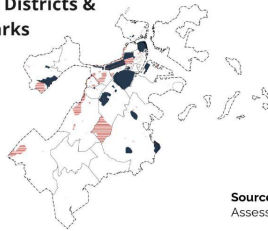
**Historic  
preservation  
needs to  
accommodate  
the city's aging  
buildings**

Year Built



In the next 25  
years, nearly all  
of the buildings  
in yellow will be  
100+ years old

Historic Districts &  
Landmarks



Source: [Analyze Boston](#) (Property  
Assessment 2023)

## Slide 17

A Design Vision Must Consider...

Historic preservation needs to accommodate the city's aging buildings

### Key Finding #4

We can learn from  
diversity that is already  
shaping the city.

## Slide 18

Key Finding #4

We can learn from diversity that is already shaping the city.



**Slide 19**  
 Symbolic  
 Everyday

**Design Can Anchor Identities & Belonging**



**Slide 20**  
 Design Can Anchor Identities & Belonging



Every Bostonian should see themselves represented in the buildings and outdoor spaces that define the city.

**Slide 21**

Chak abitan Boston ta dwe jwenn yon reprezantasyon tèt yo nan jan yo konstwi bildin ak espas ekstèn ki defini vil la.

**Tonight**

Thank you for contributing your voice and sharing your ideas for how we can build a Boston for everyone!

We'll visit 3 virtual stations together and ask for your feedback on life and design in the future of Boston.



**Slide 22**

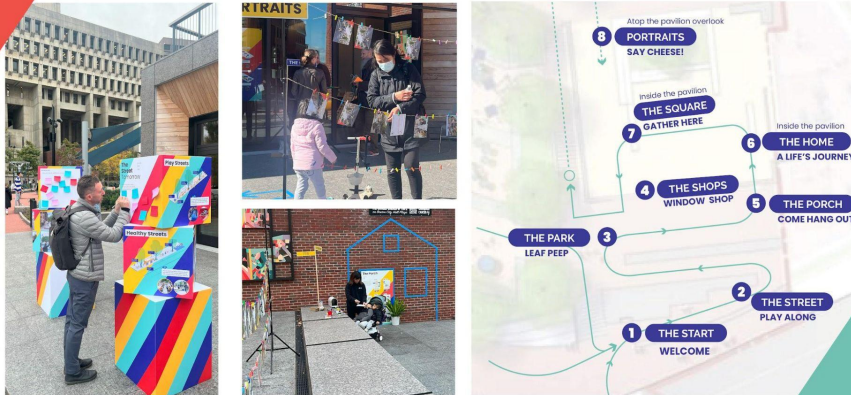
Tonight

Mèsi paske w kontribiye ak opinyon w epi w pataje lide w sou kijan nou kapab konstwi yon Boston pou tout moun.

Vizite 3 estasyon

# Open House at the Civic Pavilion

October 20 & 23



## Slide 23

Open House nan Pavilion Sivik la  
October 20 & 23

### PART 1 - Public Space

The Street

The Park

## Slide 24

PATI 1 - Espas Piblik

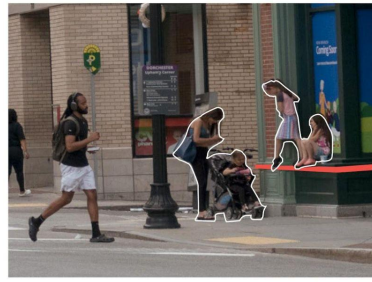
Lari a

Pak la

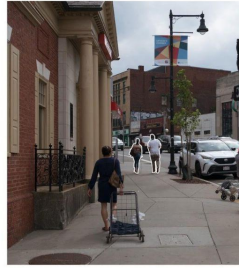


# The Street

La calle  
街道  
街道



The Boston Design Vision recommends building on today's patterns of use with design, care, and craft.



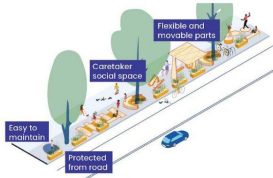
## Slide 25

Lari a

The Boston Design Vision recommends building on today's patterns of use with design, care, and craft.

### The Street

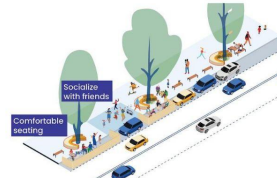
#### Play Street



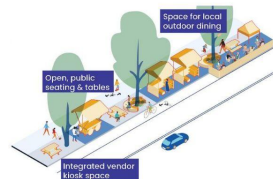
#### Green Street



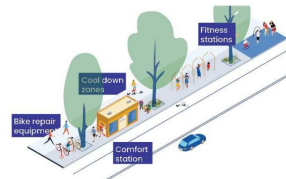
#### Chill Street



#### Commerce Street



#### Healthy Street



#### Open Street

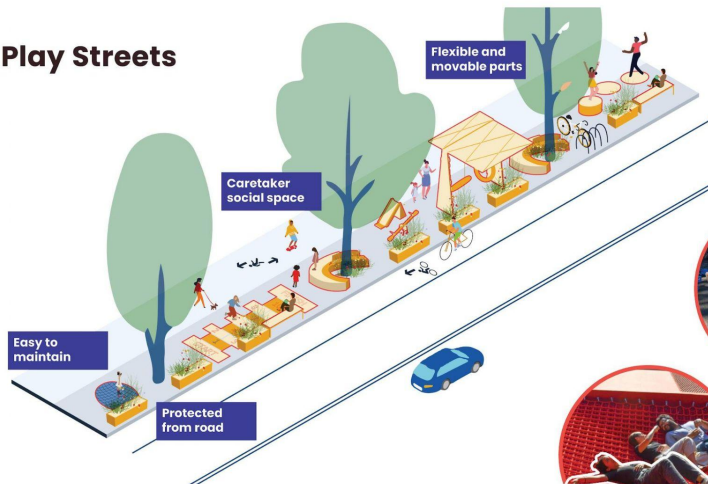


## Slide 26

Lari a

Play Street, Green Street, Chill Street  
Commerce Street, Healthy Street, Open Street

## Play Streets



Incorporate play elements for a wide range of ages to better accommodate youth and families who need to move along and linger on city streets.

## Slide 27

### Play Street

Entegre eleman lwazi pou yon divès laj nan lide pou amenaje jèn yo ak fanmi ki bezwen vin pase yon tan oswa detann yo nan ri vil la.

## Chill Streets



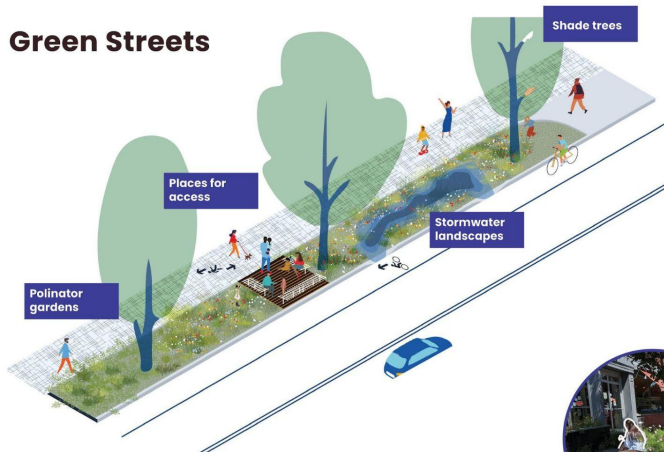
Embrace the reality of "down time" by creating spaces where lingering, gathering, and loitering are welcome, comfortable, and social.

## Slide 28

### Chill Street

Anbrase posibilite "tan lib" yo nan kreyasyon espas kote moun kapab detann, rasanble ak flannen san pwoblèm.

## Green Streets



Plant trees and landscapes that mitigate the heat island effect via shade trees, pollinator and stormwater gardens, and other sustainable features.



## Slide 29

### Green Street

Kreye opsyon plantasyon ki redui efè chalè ki gen nan ri nou yo gras ak mouvman plante pyebwa, polinizasyon, jaden dlo lapli ak lòt fonksyonalite ki dirab.

## Commerce Streets



Design streets with spaces for street markets, vendors, and spill out from groundfloor uses to create great shopping and dining streets.



## Slide 30

### Commerce Street

Vin ak plis opòtinite pou mache lari, machann ak aktivite echanj Itilizasyon premye nivo a kapab kreye bon jan kalite ri pou komès.

## Healthy Streets



Use linear city streets as places for fitness, active movement, warming and cooling stations, and adventure features.

## Slide 31

### Healthy Street

Itilize ri vil la antanke espas pou espò, sante ak byennèt gras ak sant mobilite, estasyon chofaj ak refwadisman, epi fonksyonalite kous apye.

## Open Streets



Expand the Open Streets pilot for temporary street closures, block parties and alleys to provide more open space on a short- or long-term basis.

## Slide 32

### Open Street

Eksplòre posibilite ki gen pou gen fènti tanporè ri yo, pwogram fèt nan blòk katye yo ak koulwa yo nan lide pou kreye plis espas lib nan yon kad akoutèm.



# The Park

El parque  
公園  
公園

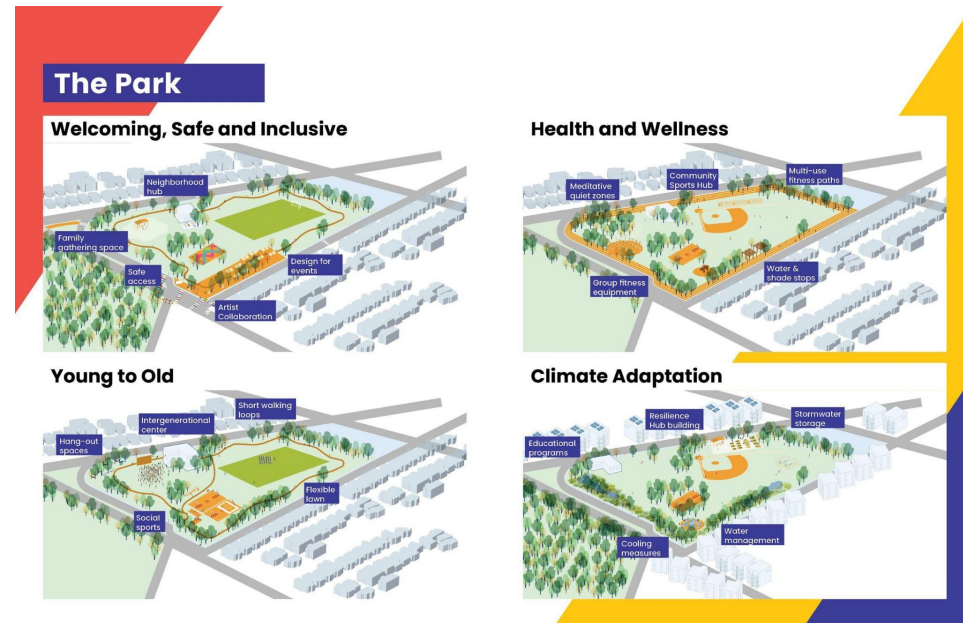
The Boston Design Vision is exploring ways to diversify the accessibility, programming, and community benefits of Boston's parks and open spaces.



## Slide 33

Pak la

Boston Design Vision ap eksplòre posibilite ki genyen pou ogmante aksè, pwogramasyon ak avantaj kominotè ki gen nan pak ak espas lib Boston yo.



## Slide 34

Pak la

Akeyan, Sekirite epi ki Entegre Moun, Sante ak Byennèt  
Jèn ak Granmoun, Adaptasyon a Klima a

## Welcoming, Safe and Inclusive



### Slide 35

Akeyan, Sekiritè epi ki Entegre Moun

Fè pak yo ansanm ak espas lib yo pi aksesib epi akeyan pou tout moun atravè konsepsyon

## Health and Wellness



### Slide 36

Sante ak Byennèt

Ogmante nivo avantaj sante ak byennèt pak ak espas lib yo gras ak yon konsantrasyon patikilye sou sante mantal.

## Young to Old



amenities that support residents ages “8 to 80” - or the full range of ages and abilities.

## Slide 37

Jèn ak Granmoun

Vin ak sistèm mesajri, pwogramasyon ak amenajman ki ap ede abitan yo sòti nan "8 rive 80 lane" - oswa tout laj ak kapasite moun kapab genyen.

## Climate Adaptation



Diversify and adapt Boston’s parks and open spaces to the city’s changing climate including flood and heat resilience strategies.

## Slide 38

Adaptasyon a Klima a

Divèsifye epi adapte pak ak espas lib Boston yo ak pwogram chanjman klimatik vil la tankou kreyasyon estrateji pou pwoteksyon kont inondasyon epi pou rezistans kont chalè.

slido



**What do you think of these ideas for Boston's streets?**

① Click **Present with Slido** or install our [Chrome extension](#) to activate this poll while presenting.

### **Slide 39**

Kisa w panse konsènan lide sa yo?

slido



**How do you use... Boston's streets to hang out and gather with others?**

① Click **Present with Slido** or install our [Chrome extension](#) to activate this poll while presenting.

### **Slide 40**

Kijan w itilize lari Boston yo pou al pran plezi w epi al rankontre ak lòt moun?



slido



## How do you use Boston's Parks?

① Click **Present with Slido** or install our [Chrome extension](#) to activate this poll while presenting.

### Slide 41

How do you use Boston's Parks

slido



## What ideas do you have for how parks and open space can better contribute to the health and wellbeing of Bostonians?

① Click **Present with Slido** or install our [Chrome extension](#) to activate this poll while presenting.

### Slide 42

Ki lide ou genyen sou kijan pak ak espas lib yo kapab pi byen kontribiyè nan sante ak byennèt abitan Boston yo?

## PART 2 – Domestic Realm

The Home

The Porch

### Slide 43

PATI 2 - Domestik domèn

Kay la

Porch la



### Slide 44

Kay la

What is a Boston Home?



### **Domestic Culture**

Cultura Doméstica  
Guóněi wénhuà

## **Slide 45**

### Domestic Culture

Glass in a cityscape lacks personality and warmth... History has to be taken into consideration. Materials make places accessible to certain people or not.

- Imari Paris Jeffries

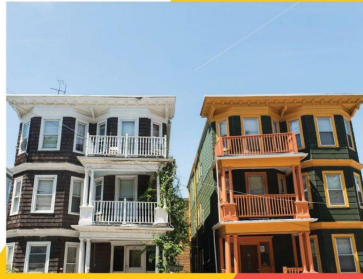
## **Slide 46**

Vit ki nan bildin wo yon vil yo manke pèsonalite epi yo mwens akeyan... Listwa se yon bagay moun dwe pran an konsiderasyon. Materyèl yo rann oswa yo pa rann espas yo aksesib pou sèten moun.

- Imari Paris Jeffries



Origins



Local Interpolation

## Slide 47

-

We are very much connected and hence telling a story of one person is not reflective of the whole community. We are a diverse community on the east coast. People have to push and the inclusive story has to be told.

- Amira Madison

## Slide 48

Nou konekte anpil epi poutèt sa a lè n ap rakonte istwa yon moun, sa pa reprezante tout kominote a. Nou se yon kominote ki divès nan kòt lès la. Moun yo gen bezwen avanse pou pi devan epi nou gen obligasyon rakonte yon istwa ki reprezante tout moun.

- Amira Madison



## Bostonian Households

Bostonians shared their diverse family and household arrangements through MadLibs.



Large families with many children  
Extended families and/or temporary relative stays

I live with my **mom, dad, sister, brother, grandmother, dog**

In a 3 bedroom apartment

I live with my **brother, sisters, mom, & step-dad**

In a very clean house

I live with my **self**

In a loft

I live with my **dog and plants**

In a condo in Norwood because I couldn't afford Boston



Single working professionals

I live with my **Brothers & Grand-dad**

In an apartment



Seniors who wish to age in place

Households with supportive needs



Intergenerational household with grandparents who help with childcare

I live with my **roommates (senior citizens)**

In a senior citizen home

I live with my **4 roommates**

In 2 family home



Students and roommates shares

## Slide 49

### Bostonian Households

Bostonians shared their diverse family and household arrangements through MadLibs.



Origins

Courtyards

Local Interpolation

## Slide 50

Lakou



Origins

Flexibility and Expandability

Local Interpolation

## Slide 51

Fleksibilite ak mwayen pou agrandi

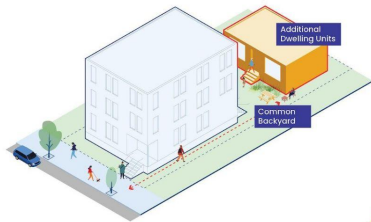


## Slide 52

Kay la

Inite lojman akseswa, Lojman Plex, Blòk ki gen anpil moun  
Blòk ki gen lakou, Teren jadinaj, Kay ki pozisyone an ranje

## Accessory Dwelling Units



Northwood ADU, Ann Arbor MI

## Slide 53

Inite lojman akseswa

## Row House Mews



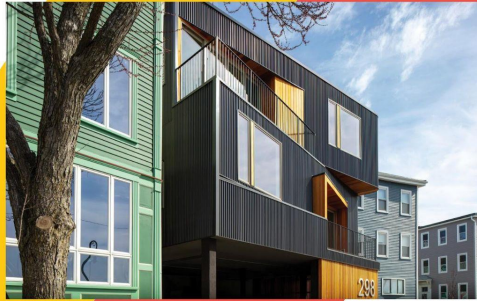
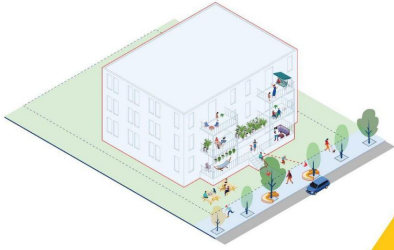
Brush Park Carriage Homes, Detroit MI

## Slide 54

Kay ki pozisyone an ranje



## Plex Housing



Marginal Street 7-Plex, East Boston MA

## Slide 55

Lojman Plex

## Garden Court



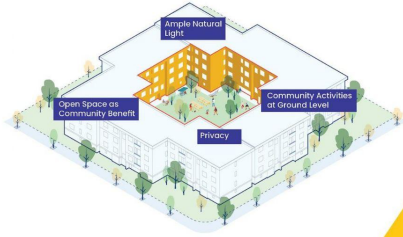
Tillamook Row, Portland OR

## Slide 56

Teren jadinaj



## Courtyard Block

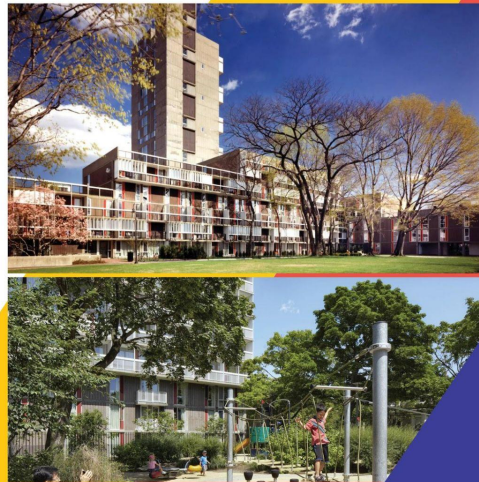
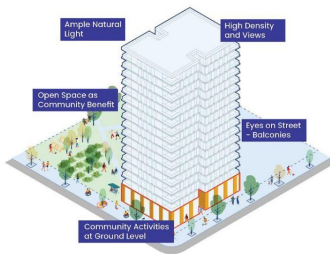


Piano Craft Building, Lower Roxbury MA

## Slide 57

Blòk ki gen lakou

## High Density Block



Peabody Terrace, Cambridge

## Slide 58

Blòk ki gen anpil moun

# The Porch

El porche  
門廊  
門廊

The Boston Design Vision is testing a variety of ways to encourage design that fosters community and enables individuality, particularly in the transition between public and private spaces.



## Slide 59

Porch la

Boston Design Vision ap teste plizyè fason pou ankouraje itilizasyon estrateji konsepsyon ki ap ankouraje kominote a, sitou nan espas tranzisyon ki genyen nan mitan espas piblik ak prive yo.

Each building has a uniqueness that is born out of place. Moving into the future, people need to reflect *into* their built environment.

- Ifeoma Ebo

## Slide 60

Chak bildin gen yon bagay ki rann li inik nou ap jwenn sèlman nan kote bildin nan ye a. Pandan y ap avanse alavni, moun yo gen bezwen jwenn reprezantasyon nan anviwònman konstwi yo a.

- Ifeoma Ebo



Origins

Porches, Stoops, and Balconies

Local Interpolation

## Slide 61

Galri ak pa pòt, Balkon

### The Porch



## Slide 62

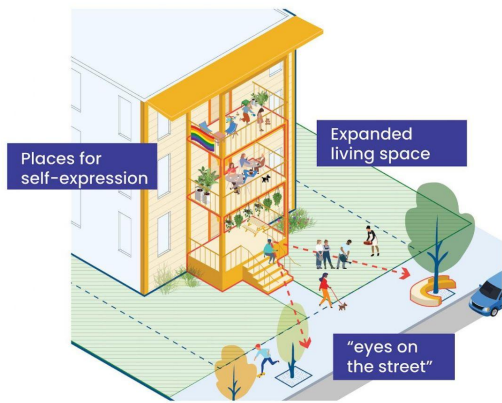
Porch la

Galri, Kònich

Jaden, Pa pòt, Side Yard



## Porches



Common to Boston's existing housing, porches allow for flexible outdoor space, "eyes on the street," personalization and provide for swing season use.

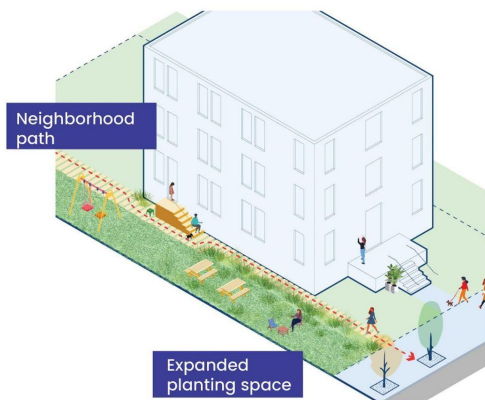


## Slide 63

Galri

Se yon eleman ki toujou la nan lojman aktyèl Boston yo, epi yo pèmèt espas deyò yon

## Side Yard



Wider sideyards or thru-block lots offer space for semi-private or shared open space, neighborhood cut-throughs, and private gardens.



## Slide 64

Side Yard

Wider side yards or thru-block lots offer space for semi-private or shared open space, neighborhood cut-throughs, and private gardens.



## Gardens



From neighborhood planting programs to food production, garden spaces are a great way to maximize beauty, productivity and community.



## Slide 65

Jaden

Sòti nan pwogram plantasyon katye yo rive nan jaden kominotè yo, espas jadinaj yo se vrèman yon bon mwayen pou ogmante jefò w yo. se yon bon mwayen pou vin ak plis bèlte, pwodiktivite epi amelyore kominote a.

## Stoop



Long a hallmark of great urban neighborhoods, stoops offers human-scaled spaces that directly address and foster life of the street.

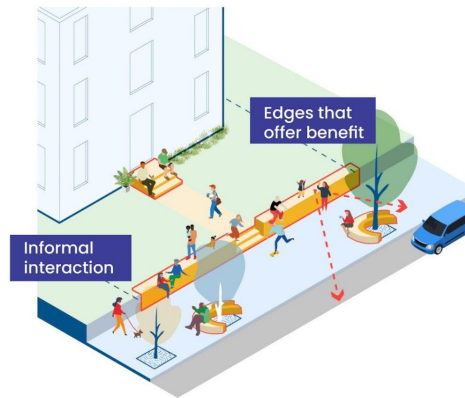


## Slide 66

Pa pòt

Se yon karakteristik ki la lontan nan gwo katye iben yo, epi yo ofri espas nan dimasyon ki ase pou nou menm lèzòm epi ki ap abòde yon fason dirèk epi ankouraje lavi nan lari a.

## Ledges



Various changes in topography and site walls around the city can offer ledges and perches for sitting and resting.



## Slide 67

Kònich

Divès chanjman nan topografi ak mi bildin yo nan tout vil la kapab ofri opsyon kònich ak chèz pou chita ak repoze.

slido



## What type of home is your dream home?

① Click **Present with Slido** or install our [Chrome extension](#) to activate this poll while presenting.

## Slide 68

Kijan w wè kay ou toujou reve genyen an?

slido



**What does your dream home look, feel, sound, smell, and taste like? Who lives there?**

① Click **Present with Slido** or install our [Chrome extension](#) to activate this poll while presenting.

### **Slide 69**

Ak kisa kay ou toujou reve genyen an sanble, kijan w santi l, kijan l sonnen nan zòrèy ou, ki sant li genyen, epi ki gou l genyen tou? Ki moun k ap viv nan kay ou toujou reve genyen an?

slido



**What memories do you have that took place on a porch, a stoop, a balcony, a side lot or in a front garden?**

① Click **Present with Slido** or install our [Chrome extension](#) to activate this poll while presenting.

### **Slide 70**

Ki souvni ou genyen ki te pase w sou yon pa pòt, yon balkon, yon teren sou kote oswa nan yon jaden sou devan?

## PART 3 – Places of Commerce

The Shops

The Square

### Slide 71

PATI 3 - Komèsyal yo

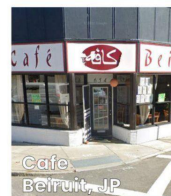
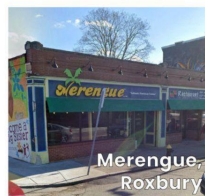
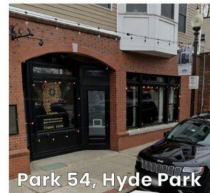
Magazen yo

Blòk la

## The Shops

Las tiendas  
商店  
商店

The Boston Design Vision looks to build on a valued aspect of Boston neighborhoods noted in community feedback to date - the fine-grained texture of local, small and diverse ground floor businesses and uses.



### Slide 72

Magazen yo

Vizyon Konsepsyon Boston an gen pwojè konstwi sou baz yon aspè enpòtan nan katye Boston yo ki se yon aspè yo note nan opinyon chak kominote yo jiska jodi a - teksti fen ti biznis lokal ak divès ki nan premye nivo yo ak fason yo itilize yo.





Origins

Retail Amenities (Healthcare, Daycare, etc.)

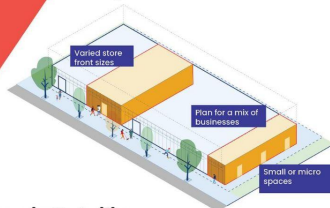
Local Interpolation

## Slide 73

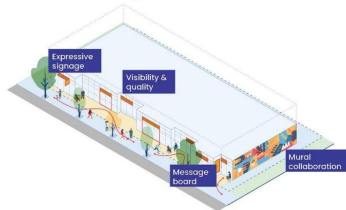
Komès an detay (Healthcare, Daycare, etc.)

### The Shops

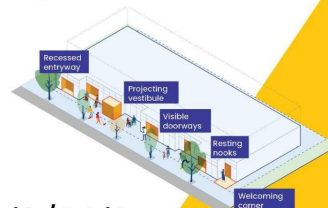
#### Retail Diversity



#### Care in Detailing



#### Fine-grained Storefronts



#### Inside / Outside



## Slide 74

Magazen yo

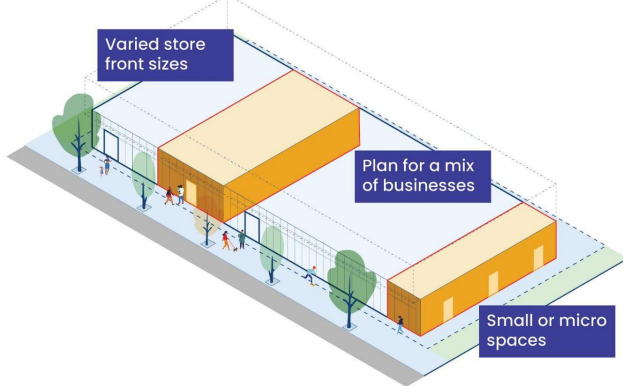
Divèsite nan vant an detay

Vitrin magazen ki gen teksti fen yo

Swen nan Sèvis an Detay yo

Anndan / Deyò

## Retail Diversity



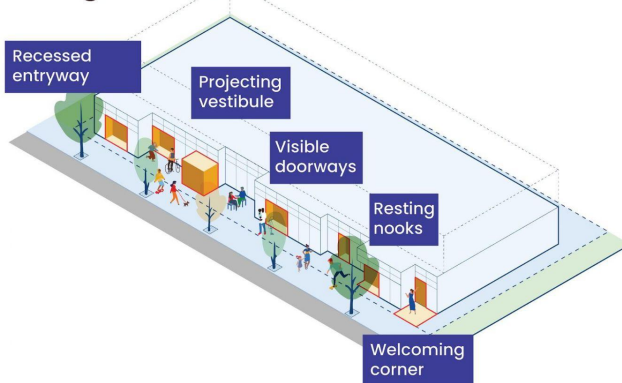
Work toward design that allows for a range of ground floor and retail uses and scales - from large footprint businesses to small businesses and incubators.

## Slide 75

Divèsite nan vant an detay

Ankouraje konsepsyon ki pèmèt gen divès kalite premye nivo ak itilizasyon epi nivo sèvis an detay - sòti nan biznis a gwo kliyantèl ale nan ti biznis epi komès ki fenk ap pran yo.

## Fine-grained Storefronts



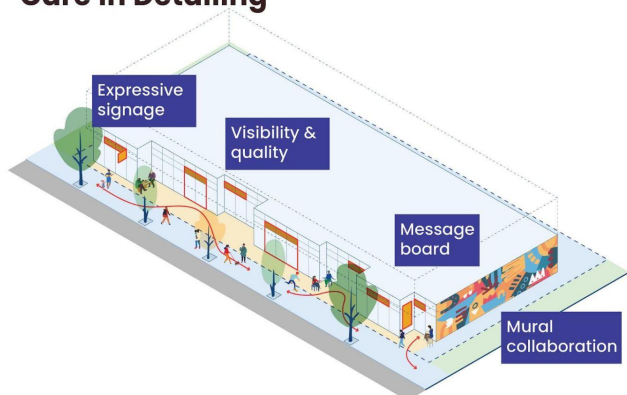
Identifying the design features that make for a great experience along a building - from elements that create visual interest to porous edges.

## Slide 76

Vitrin magazen ki gen teksti fen yo

Idantifye fonksyonalite konsepsyon yo pou vin ak yon eksperyans djanm pou yon batiman - sòti nan eleman ki kreye enterè vizyèl pou ang (arebò) dlo ka antre ladan yo.

## Care in Detailing



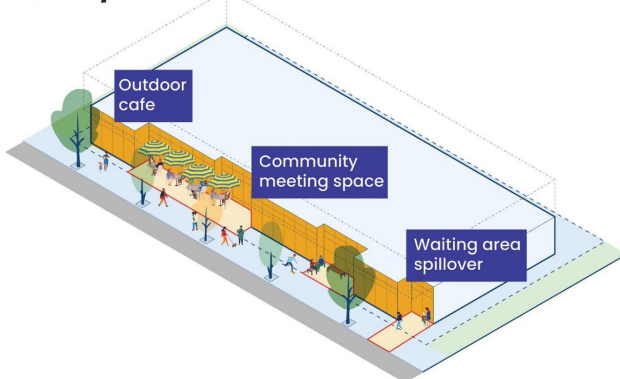
Describe the specific details that provide a quality visual and physical experience, from signage and window glazing to materials and spacing.

## Slide 77

Swen nan Sèvis an Detay yo

Dekri detay espesifik ki asire kalite imaj ak eksperyans fizik, sòti nan pano yo pase pran vit yo rive nan materyèl ak kreyasyon espas yo.

## Inside / Outside



Exploring the barriers and opportunities to enlivening the sidewalk along storefronts, from spill-out cafes to sidewalk shopping.

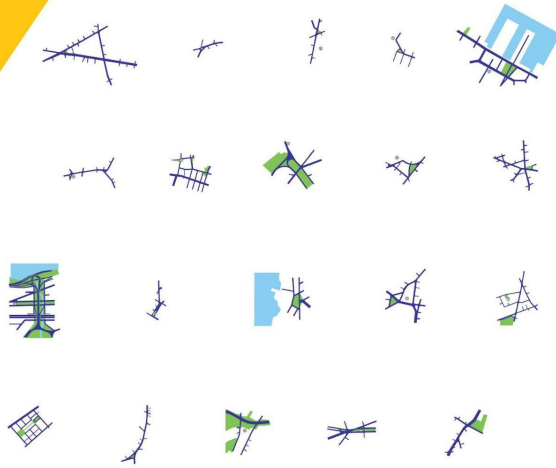
## Slide 78

Anndan / Deyò

Eksplorasyon obstak ak opòtinite pou anime twotwa yo sou tout devan vitrin yo, sòti nan komès manje rapid ki sou twotwa yo rive nan biznis ki pozisyon sou arebò lari yo.

# Boston Squares

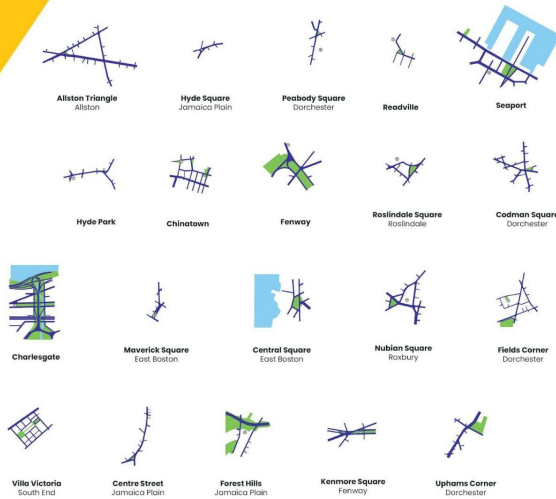
Plazas de Boston  
 波士頓廣場  
 波士頓廣場



**Slide 79**  
 Boston Blòk la

# Boston Squares

Plazas de Boston  
 波士頓廣場  
 波士頓廣場



**Slide 80**  
 Boston Blòk la



# Allston



## Slide 81

Allston

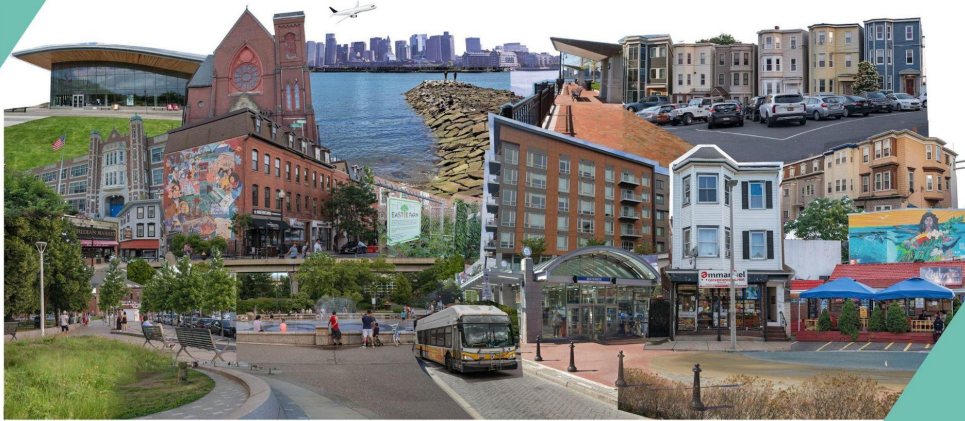
# Chinatown



## Slide 82

Chinatown

# East Boston



**Slide 83**  
East Boston

# Upham's Corner



**Slide 84**  
Upham's Corner

slido



**What do you go to your neighborhood shops for most often?**

① Click **Present with Slido** or install our [Chrome extension](#) to activate this poll while presenting.

## Slide 85

What do you go to your neighborhood shops for most often?

slido



**What about these collages reflect Boston to you? What do you envision for the future of square in your neighborhood?**

① Click **Present with Slido** or install our [Chrome extension](#) to activate this poll while presenting.

## Slide 86

What about these collages reflect Boston to you? What do you envision for the future of square in your neighborhood?



**Slide 87**

What's Next?

**Where We're Headed**

- Summarizing & digesting the input you shared tonight along with what we heard at the October Open Houses
- Refining the innovations, principles, and ideas based on your input
- Next phase: Implementation Roadmap

Got Questions/Comments? Reach out to Breeze Outlaw at [breeze.outlaw@boston.gov](mailto:breeze.outlaw@boston.gov)

**Slide 88**

Where We're Headed

Summarizing & digesting the input you shared tonight along with what we heard at the October Open Houses

Refining the innovations, principles, and ideas based on your input

Next phase: Implementation Roadmap

Got questions / comments? Reach out to Breeze Outlaw at [breeze.outlaw@boston.gov](mailto:breeze.outlaw@boston.gov)